
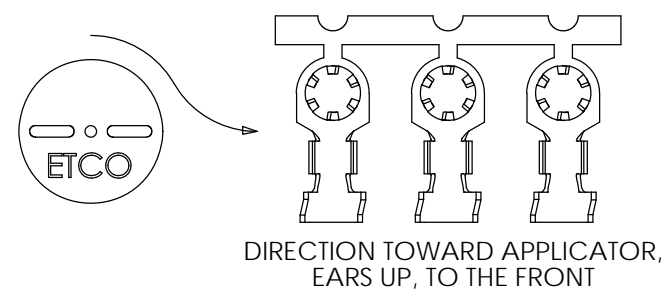
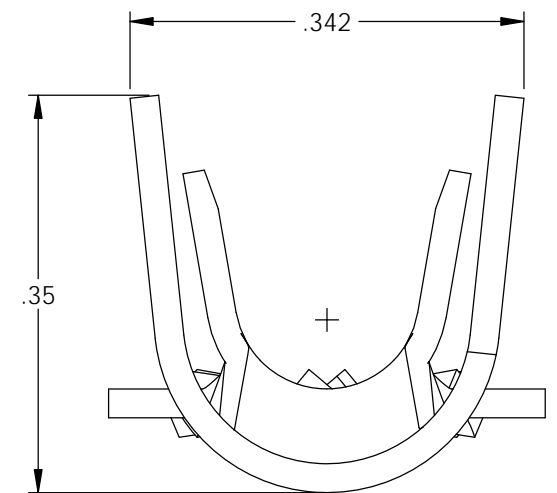
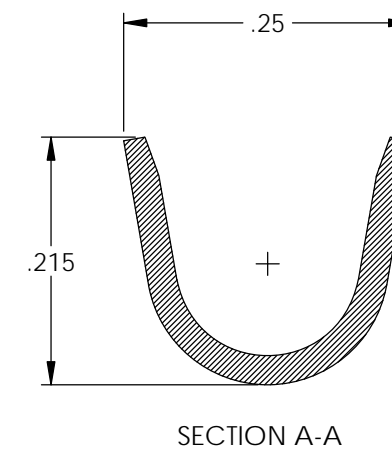
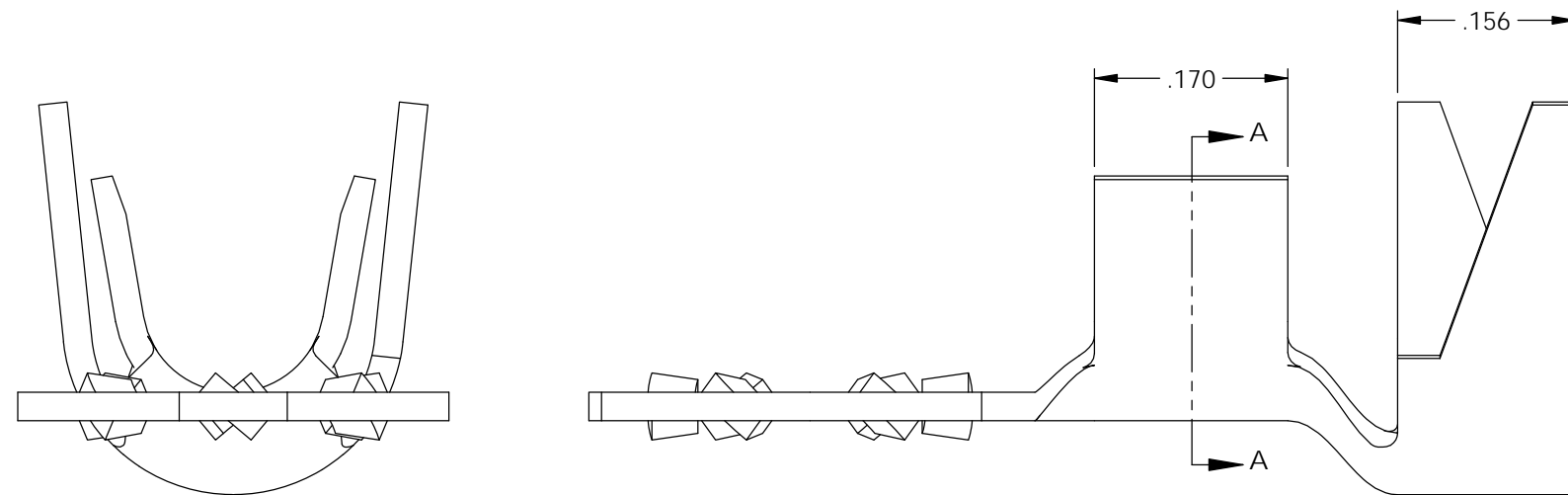
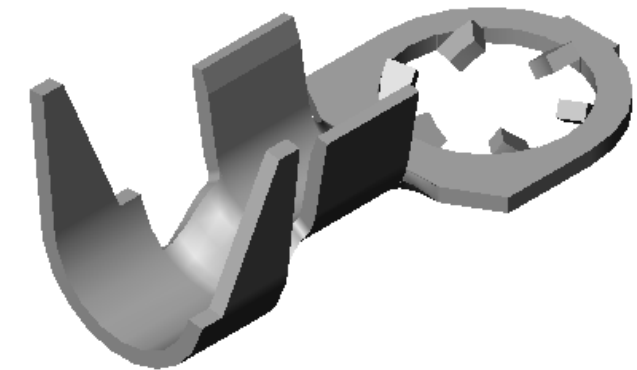
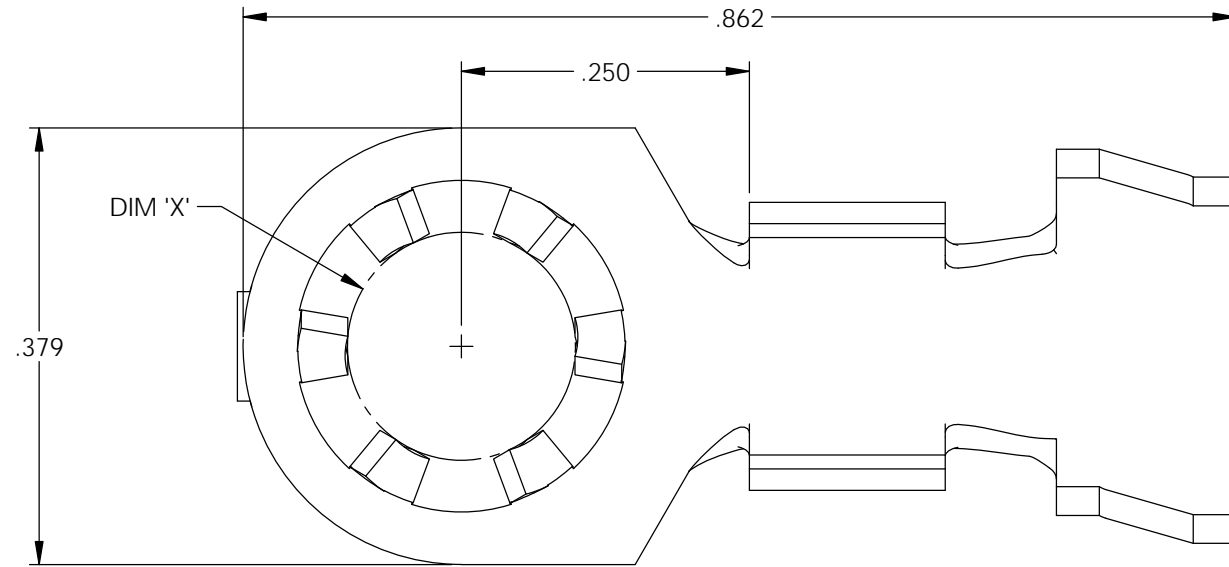


NOTES:

- MATERIAL: .025 THICK 1010 CRS  
#3 TEMPER (1/4 HARD)  
PER ETCO METAL CODE XXXXX.
- POST-PLATE: TIN OVER COPPER.
- WIRE RANGE: 10-14 AWG.
- INSULATION DIAMETER RANGE:  $\phi$ .150- $\phi$ .250.

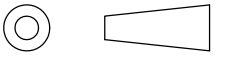

Part Number	DIM 'X'	Mat'l	Post-Plating	
4000 A4G99-8	.172	Note 1	Note 2	X
4000 A4G99-10	.198	Note 1	Note 2	X

Rev.	Description of Change/ SCN#	Date
A	Approved For Quote SCJ	5/14/20



THIS PRINT IS THE PROPERTY OF ETCO INCORPORATED. NO PART OF THIS DESIGN MAY BE USED IN ANY WAY WITHOUT WRITTEN CONSENT FROM ETCO INCORPORATED.

# UNCONTROLLED COPY

 THIRD ANGLE PROJECTION TOLERANCES UNLESS OTHERWISE SPECIFIED INCHES: .XX - $\pm$ .030 .XXX - $\pm$ .015 ANGLES: $\pm$ 5°	TOOL NO. <b>1044</b>	Title: <b>Locking Ring Terminal</b>		
		DO NOT SCALE DWG.	Drawn By: <b>S.Johnson</b>	Date: <b>5/14/20</b>
ETCO Incorporated Engineered Products 25 Bellows Street Warwick, RI 02888 Phone: (401) 467-2400 Fax: (401) 467-9230 www.ETCO.com		Design Control By: <b>ETCO</b>	Scale: <b>6X</b>	Size <b>B</b>
		Dwg. No.: <b>4000 A4G99 -8 -10 cust</b>		