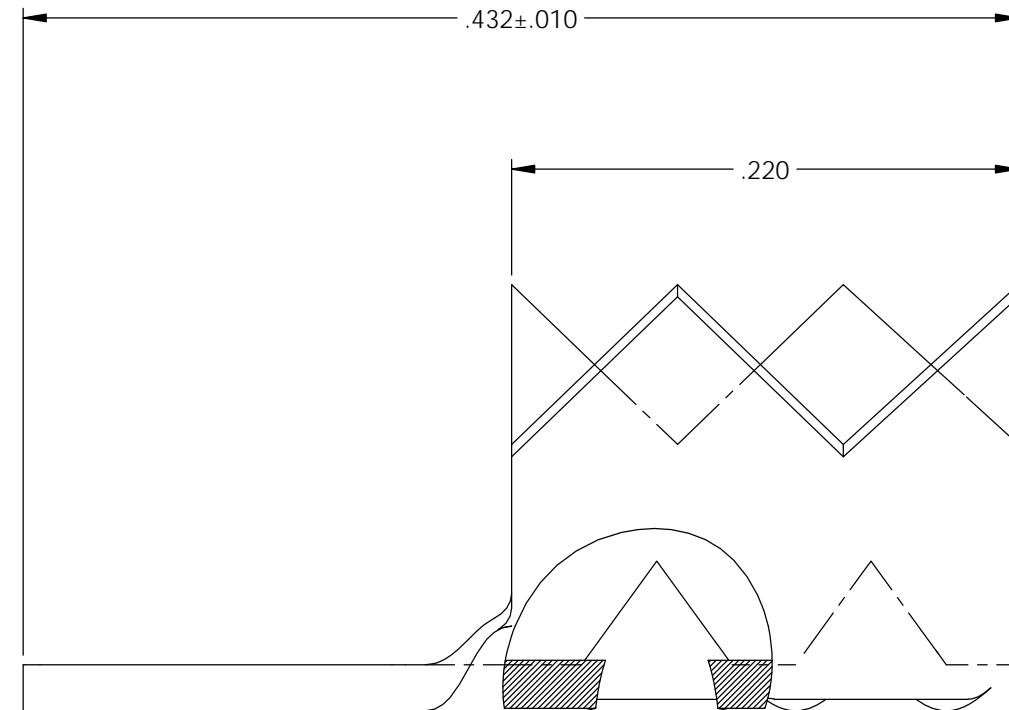
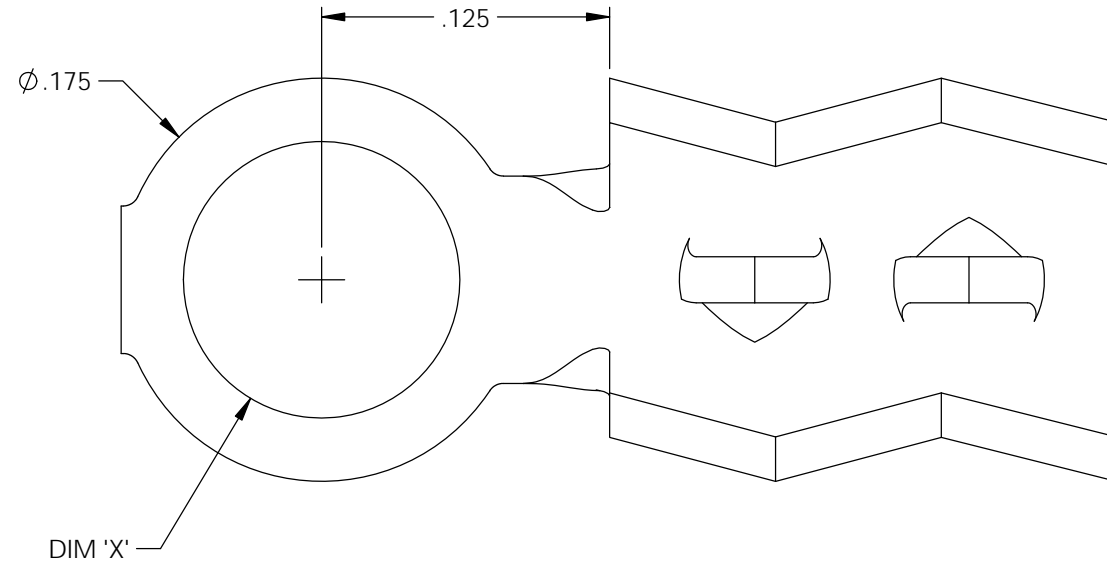


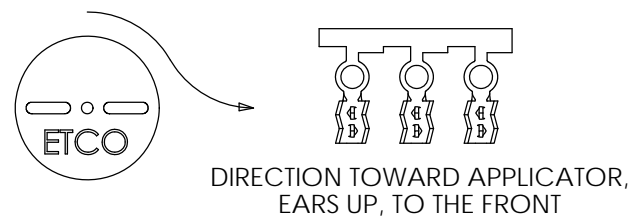
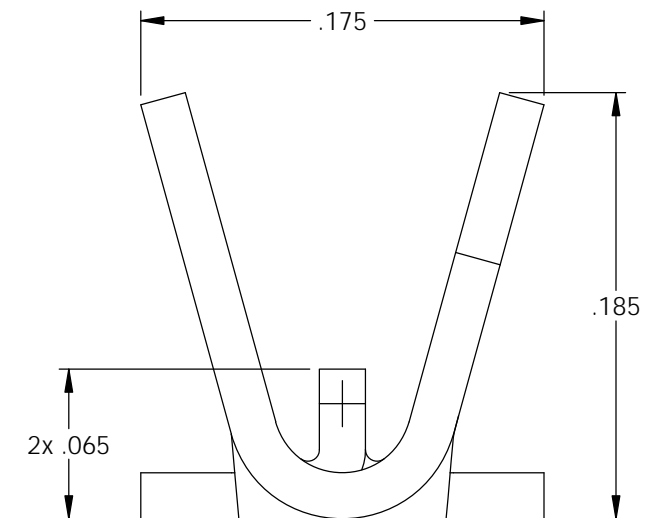
NOTES:

1. MATERIAL: .020 THICK BRASS
#2 TEMPER (1/2 HARD)
PER ETCO METAL CODE XXXXX.
2. MATERIAL: .020 THICK PRETINNED BRASS
#2 TEMPER (1/2 HARD)
PER ETCO METAL CODE XXXXX.
3. PARTS MAY BE COATED WITH A LIGHT FILM OF LUBRICATION USED IN THE MANUFACTURING PROCESS.
4. INSULATION DIAMETER RANGE: $\phi .075 - \phi .125$.



Part Number	DIM 'X'	Mat'l
40041	.070	Note 1
40042	.070	Note 2
40045	.094	Note 1
40046	.094	Note 2
40061	.120	Note 1
40062	.120	Note 2

Rev.	Description of Change/ SCN#	Date
A	Approved For Quote SCJ	4/07/20



UNCONTROLLED COPY

<p>THIRD ANGLE PROJECTION TOLERANCES UNLESS OTHERWISE SPECIFIED INCHES: .XX - ±.030 .XXX - ±.015 ANGLES: ±5°</p>	<p>TOOL NO. 1035</p>	<p>Title: Insulation Piercing Ring Terminal</p>		
		<p>DO NOT SCALE DWG.</p>	<p>Drawn By: S. Johnson</p>	<p>Date: 4/07/20</p>
<p>ETCO Incorporated Engineered Products 25 Bellows Street Warwick, RI 02888 Phone: (401) 467-2400 Fax: (401) 467-9230 www.ETCO.com</p>		<p>Design Control By: ETCO</p>	<p>Scale: 12X</p>	<p>Size B</p>
		<p>Dwg. No.: 40041, 40042, 40045, 40046, 40061, 40062 cust</p>		