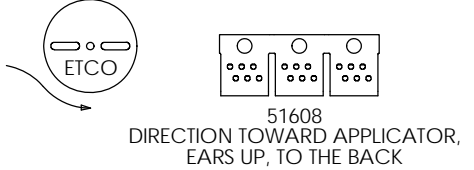
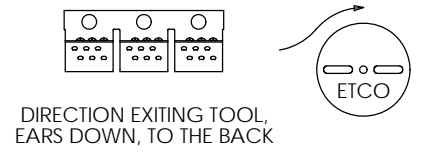
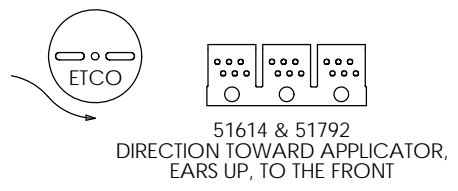
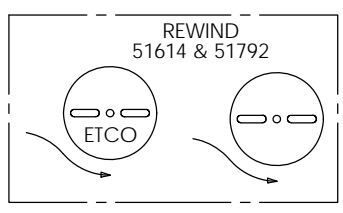
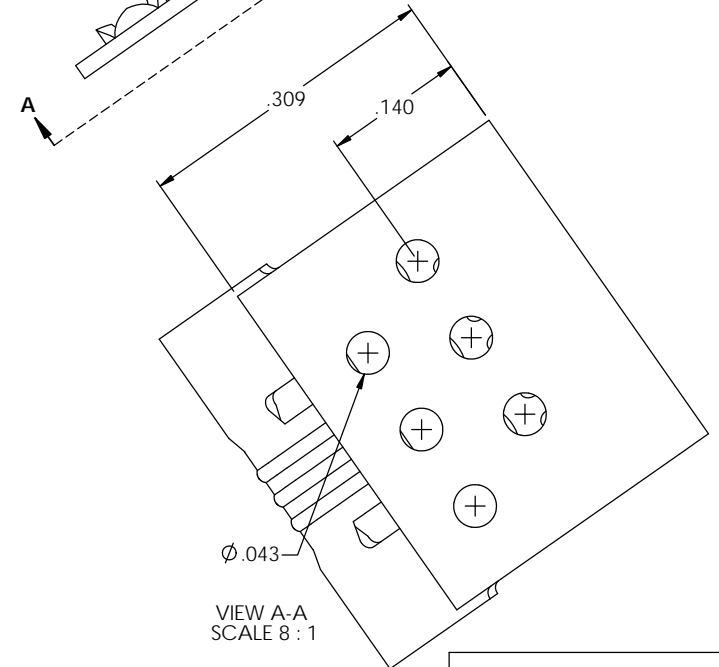
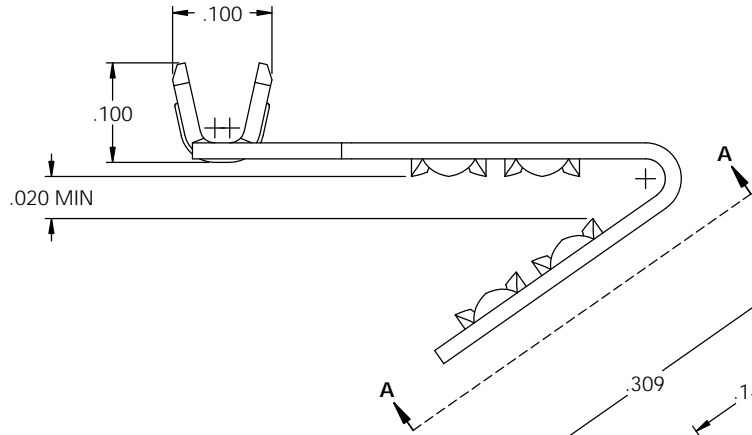
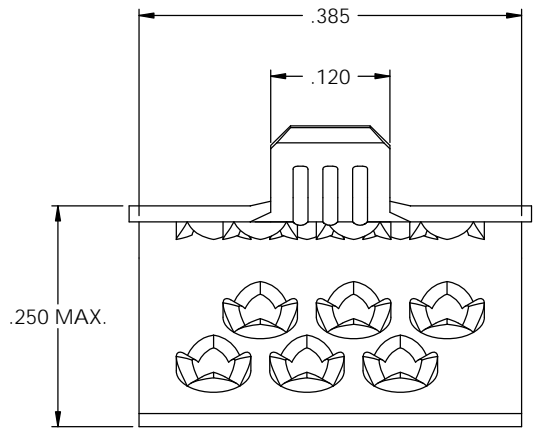
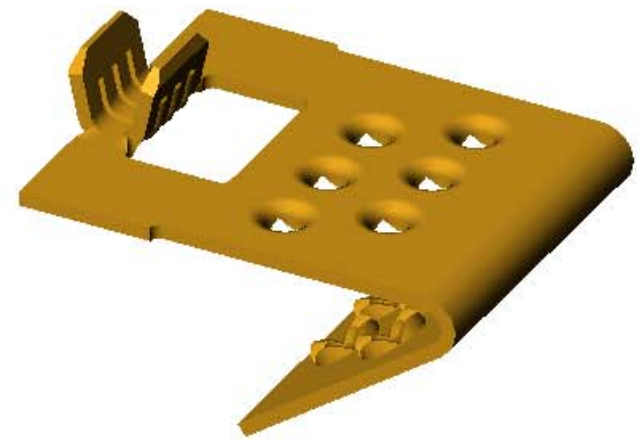
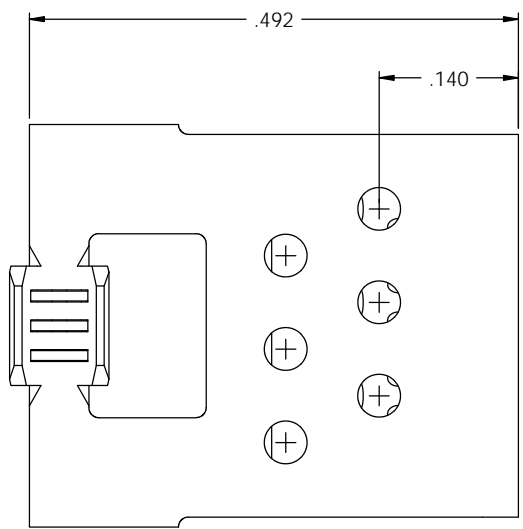


- NOTE:  
 1.) MAT'L: .016 THK., BRASS,  
 #4 TEMPER (FULL HARD),  
 PER ETCO METAL CODE NO. 05042.  
 2.) MAT'L: .016 THK., PRE-TINNED BRASS,  
 #4 TEMPER (FULL HARD),  
 PER ETCO METAL CODE NO. 01261.  
 3.) PARTS MUST BE CLEAN AND FREE OF  
 ANY LUBRICANTS OR FOREIGN MATTER.  
 4.) WIRE RANGE: 20-22 AWG.

P/C	MAT'L
51608	NOTE 1
51614	NOTE 1
51792	NOTE 2

Rev.	Description of Change/ SCN#	Date
-	REDRAWN ON SOLIDWORKS SCJ 51608 & 51614 ORG. DWG. DATE: 5-11-94 / 51792 ORG. ENG. DWG. DATE: 9-24-97	2-16-05



**UNCONTROLLED COPY**

 THIRD ANGLE PROJECTION	TOOL NO. <b>0650</b>	Title: <b>THERMO-FOIL</b>		
	DO NOT SCALE DWG.		Drawn By: <b>S. Johnson</b>	Date: <b>2-16-05</b>
TOLERANCES UNLESS OTHERWISE SPECIFIED INCHES: .XX - ±.030 .XXX - ±.015 ANGLES: ±5°		 ETCO	Chk'd/App'd By:	Scale: <b>8X</b>
ETCO Incorporated Engineered Products 25 Bellows Street Warwick, RI 02888 Phone: (401) 467-2400 Fax: (401) 467-9230 www.ETCO.com			Dwg. No.:	<b>51608, 51614, 51792 cust</b>