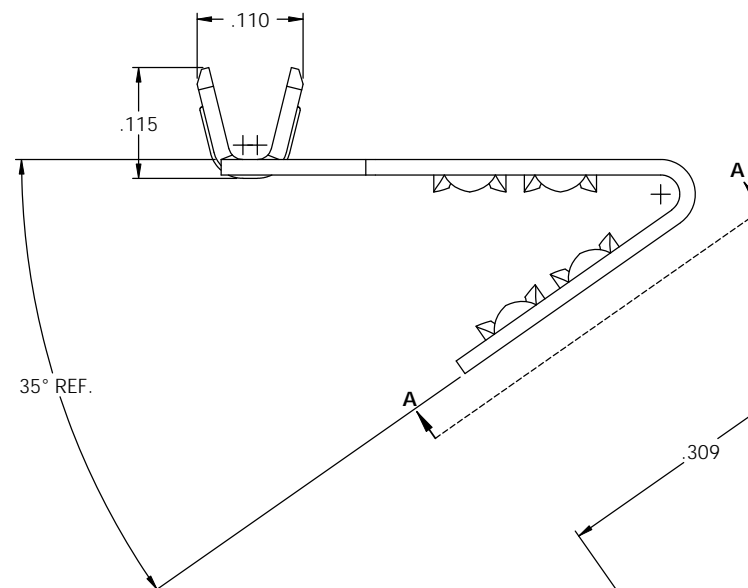
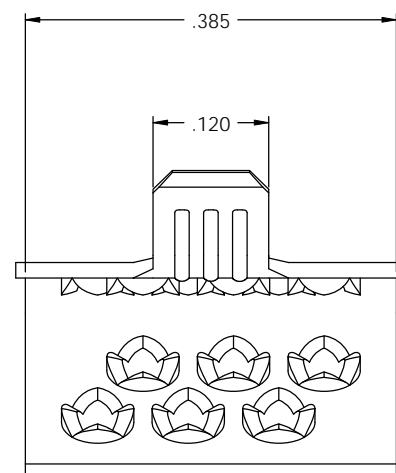
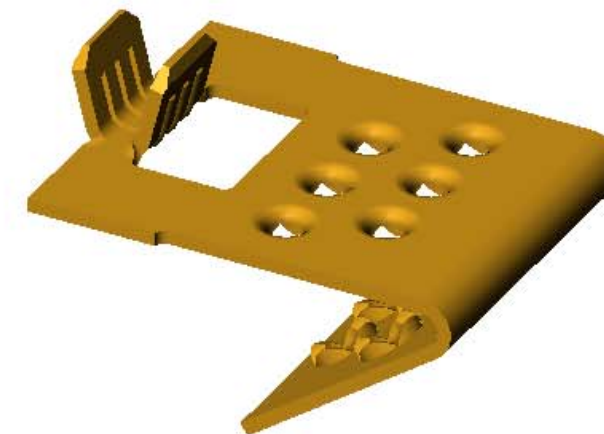
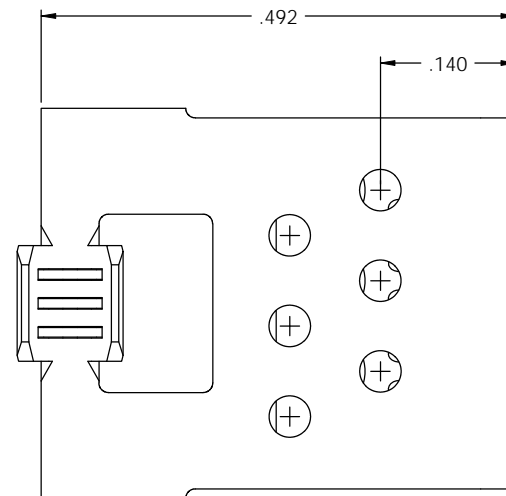


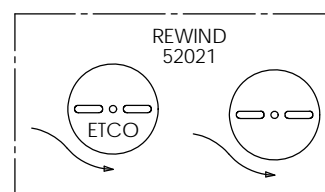
Rev.	Description of Change/ SCN#	Date
-	RELEASED FOR MANUFACTURING SCJ	10-20-04
1	ADDED NOTES SCJ	11-1-04

NOTE:
 1.) MAT'L: .016 THK., BRASS,
 #4 TEMPER (FULL HARD),
 PER ETCO METAL CODE NO. 05042.
 2.) PARTS MUST BE CLEAN AND FREE OF
 ANY LUBRICANTS OR FOREIGN MATTER.
 3.) WIRE RANGE: 18 AWG.

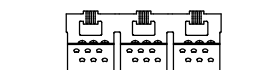


12X 4 POINT STAR PUNCH,
 Ø.043 X .035 DP.
 (3 POINT MIN. STAR)

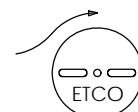
VIEW A-A
 SCALE 8 : 1



52021
 DIRECTION TOWARD APPLICATOR,
 EARS UP, TO THE FRONT



DIRECTION EXITING TOOL,
 EARS DOWN, TO THE BACK



52020
 DIRECTION TOWARD APPLICATOR,
 EARS UP, TO THE BACK

UNCONTROLLED COPY

 THIRD ANGLE PROJECTION	TOOL NO. 0650	Title: THERMO-FOIL	
	DO NOT SCALE DWG.	Drawn By: S. Johnson	Date: 10-7-04
TOLERANCES UNLESS OTHERWISE SPECIFIED INCHES: XX - ±.030 XXX - ±.015 ANGLES: ±5°	 ETCO Incorporated Engineered Products 25 Bellows Street Warwick, RI 02888 Phone: (401) 467-2400 Fax: (401) 467-9230 www.ETCO.com	Chk'd/App'd By:	Scale: 8X Size: C
		Dwg. No.:	52020 & 52021 cust