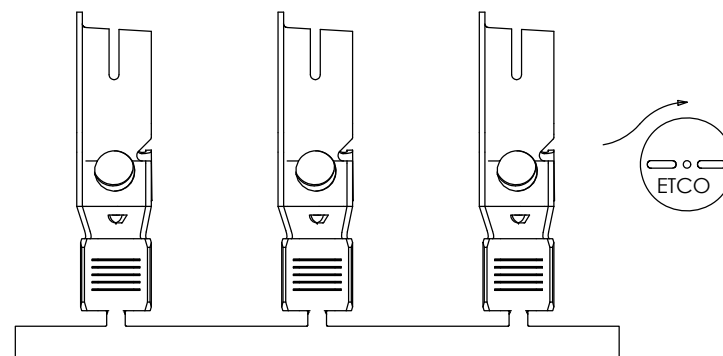
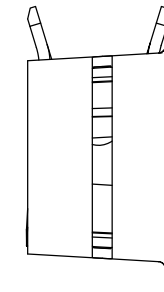
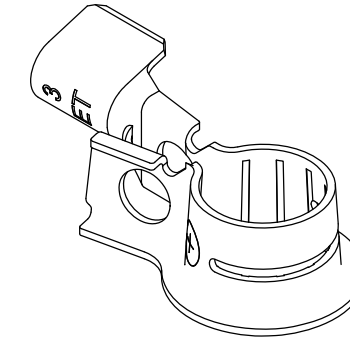
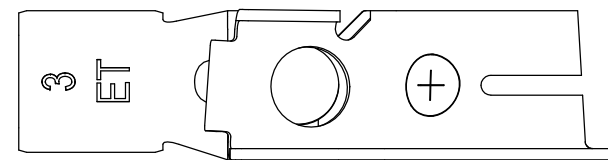
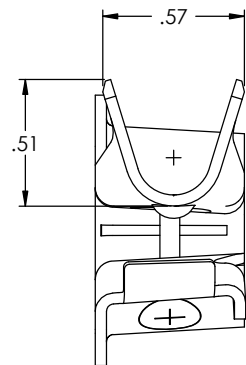
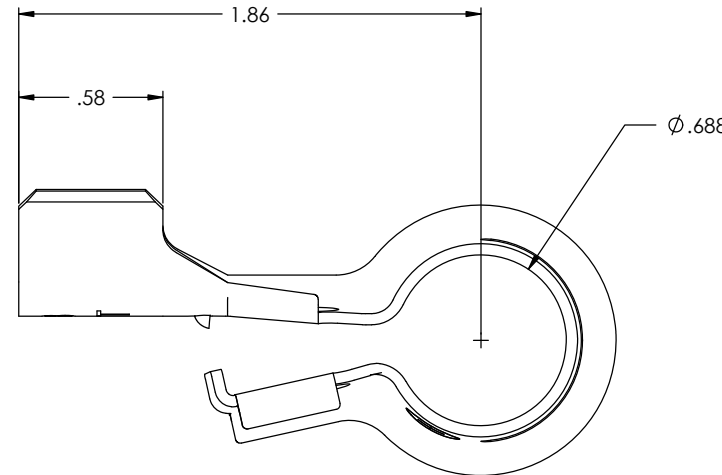
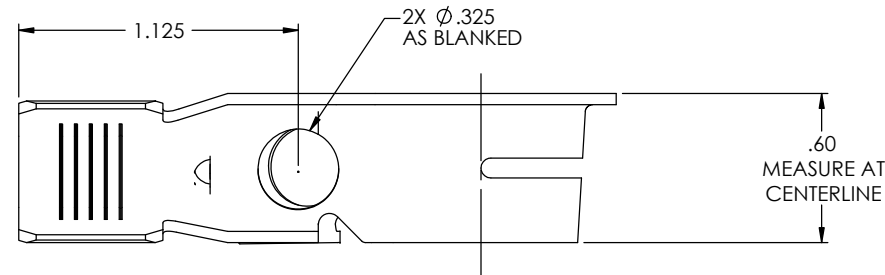
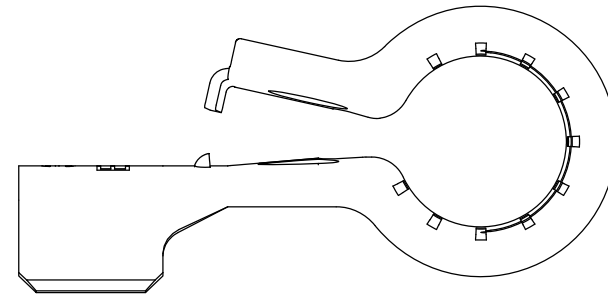


NOTE:

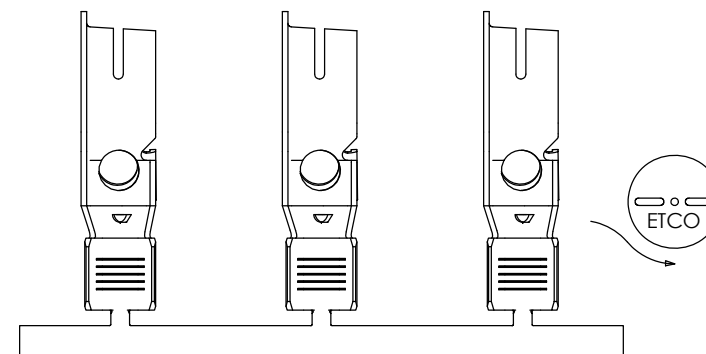
- 1.) MAT'L: .045 THK, BRASS, #2 TEMPER (HALF HARD), ANNEALED TO TEMPER, PER ETCO METAL CODE NO. 07043.
- 2.) MAT'L: .045 THK, PRE-TINNED BRASS, #2 TEMPER (HALF HARD), ANNEALED TO TEMPER, PER ETCO METAL CODE NO. 07042.
- 3.) PARTS MAY BE COATED WITH A LIGHT FILM OF LUBRICATION USED IN THE MANUFACTURING PROCESS.
- 4.) WIRE RANGE: 4 - 6 AWG
- 5.) FOR USE WITH $\phi 5/16"$ BOLT.

P/C	DESCRIPTION	MAT'L
52117	BPC7-P-1*ARC-THB	NOTE 2

Rev.	Description of Change/ SCN#	Date
-	INITIAL CUSTOMER DRAWING RELEASE JMR	2-22-10
1	ECR #7185 SMK	6-22-23



DIRECTION EXITING TOOL, EARS UP, TO THE FRONT



DIRECTION TOWARD APPLICATOR, FROM RIGHT, EARS UP, TO THE FRONT

UNCONTROLLED COPY					
 THIRD ANGLE PROJECTION	TOOL NO. 0869	Title: POSITIVE BATTERY TERMINAL			
		DO NOT SCALE DWG.	Drawn By: J. RAMALHO	Date: 7-30-08	Chk'd/App'd By:
TOLERANCES UNLESS OTHERWISE SPECIFIED INCHES: .XX - $\pm .030$.XXX - $\pm .015$ ANGLES: $\pm 5^\circ$		ETCO Incorporated Engineered Products 25 Bellows Street Warwick, RI 02888 Phone: (401) 467-2400 Fax: (401) 467-9230 www.ETCO.com	Dwg. No.:	Scale: 4X	Size C
			52117 cust		