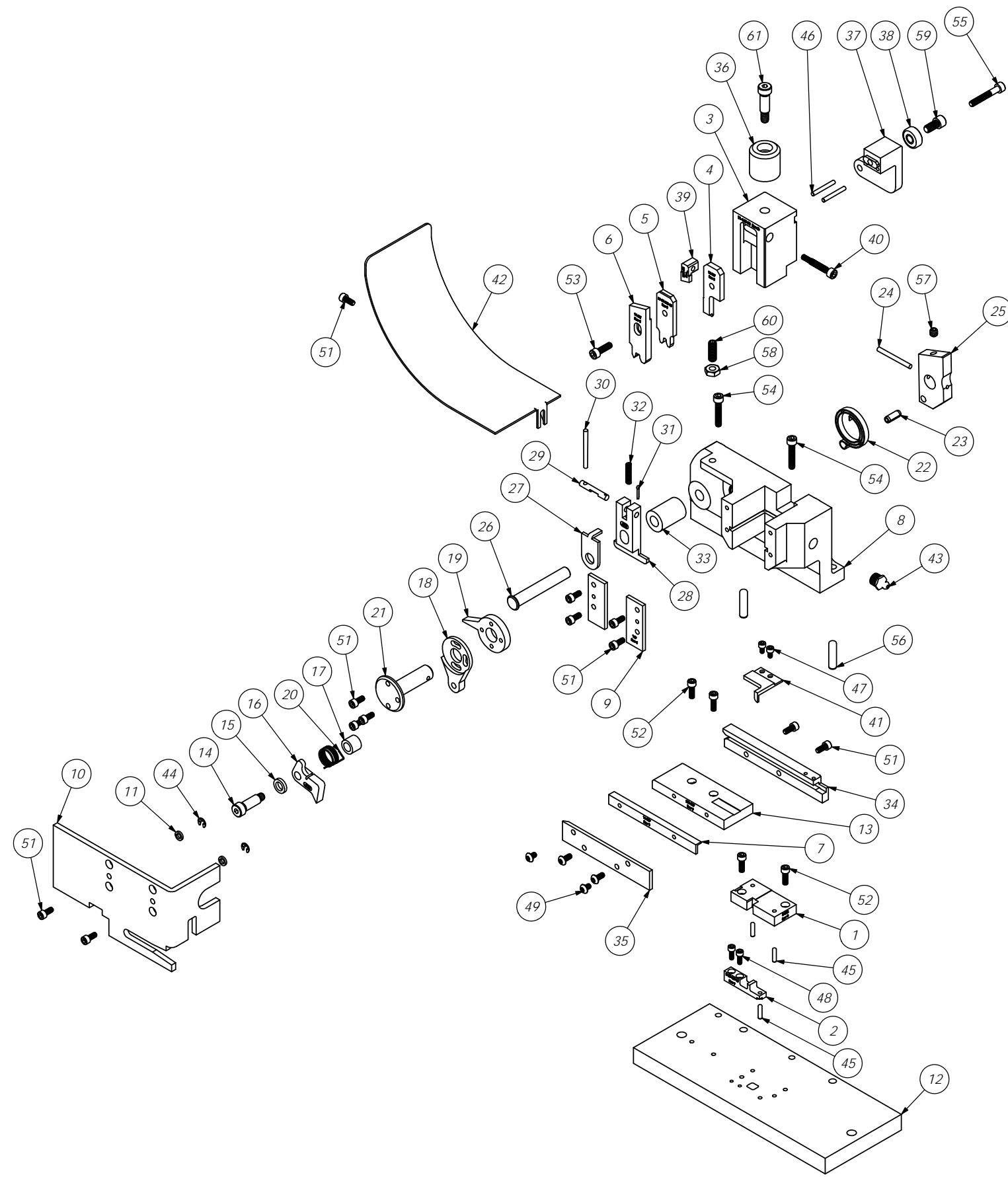


ITEM NO.	QTY.	Part_code	PART NUMBER	DESCRIPTION
1	1	60149	8-022	Die
2	1	69562	9-CS-167-18	Anvil
3	1	75694	11-169-FS	Plunger
4	1	61589	12-017	Cut-off Punch
5	1	67581	13-CS510-18	Wire Rolling Tool
6	1	63030	14-SW	Insulation Rolling Tool
7	1	67593	16-039	Spacer
8	1	72513	101-79-ACS	Casting
9	2	69859	169	Gib
10	1	73922	176	Guard
11	2	67207	176S-060	Guard Spacer
12	1	76234	205-PN187H	Base Plate
13	1	69857	250-287	Die Plate
14	1	76873	301-4	Shoulder Screw
15	1	69597	302-.100	Feed Finger Spacer
16	1	74325	303	Feed Finger
17	1	69497	304-.400	Feed Finger Spacer
18	1	77497	305-2	Feed Finger Arm
19	1	69206	306-TH-1	Feed Stop Arm
20	1	67608	307-8	Spring
21	1	74400	308-Finished	Feed Shaft
22	1	74402	310	Cam Return Spring
23	1	74403	311	Roll Pin
24	1	74404	312	Cam Taper Pin
25	1	63654	314L-9A-CP	Cam Body
26	1	74495	401-Finished	Brake Shaft
27	1	74496	402	Spring Retainer
28	1	69214	403-104	Brake Body
29	1	74673	404	Brake Cam
30	1	74674	405	Taper Pin
31	1	74675	406	Cotter Pin
32	1	74676	407	Brake Spring
33	1	60461	408-1.080	Brake Bushing
34	1	64962	500-272	Rear Guide
35	1	65352	1000-151	Front Guide
36	1	77918	1102-FS	Floating Shank
37	1	75710	1125-Finished	Cam Roller Bracket
38	1	75719	1142	Cam Roller Bearing
39	1	64091	1150-CS	Plunger Adjustment Block
40	1	75728	1155	Plunger Adjustment Screw
41	1	65961	1600-187	Stripper / Stop
42	1	69427	1800-7	Stock Chute
43	1	63506	McMaster-Carr #1095K11	1/8 NPT Grease Fitting
44	2	72069	McMaster Carr #98407A118	#8 E-Style Retaining Ring
45	3	63507	1.8_.50dp	Φ 1/8" x 1/2" Dowel
46	2	62849	1.8_1.00dp	1/8" x 1" Dowel
47	2	63207	6-32_.25sh	#6-32 x 1/4" Socket Hd Cap Screw
48	2	63209	6-32_.38sh	#6-32 x 3/8" Socket Hd Cap Screw
49	2	63212	8-32_.25bh	#8-32 x 1/4" Button Hd Cap Screw
50	2	61472	8-32_.38bh	#8-32 x 3/8" Button Hd Cap Screw
51	12	63161	8-32_.38sh	#8-32 x 3/8" Socket Hd Cap Screw
52	4	63164	8-32_.50sh	#8-32 x 1/2" Socket Hd Cap Screw
53	1	70293	10-32_.63sh	#10-32 x 5/8" Socket Hd Cap Screw
54	2	63155	10-32_1.00sh	#10-32 x 1" Socket Hd Cap Screw
55	1	77396	10-32_1.25sh	#10-32 x 1 1/4" Socket Hd Cap Screw
56	2	63510	1.4_1.00dp	1/4 x 1" Dowel Pin
57	2	63511	1.4-20_.25ssf	1/4-20 x 1/4" Socket Hd Set Screw
58	1	63512	1.4-28 jn	1/4-28 Jam Nut
59	1	62184	1.4-28_.50sh	1/4-28 x 1/2" Socket Hd Cap Screw
60	1	63513	1.4-28_.75ss	1/4-28 x 3/4" Socket Set Screw
61	1	78918	5.16_.75shss	5/16 x 3/4" Shoulder Screw



### Assembly Drawing and Bill of Materials

Applicator Type: ECC Side Applicator  
Terminal: PN187H-18  
B.O.M. #: 79017

### Section 5

NOTE:  
**(1) Items marked in bold text are high wear items.**  
**(2) Use OEM replacement tooling only.**  
**(3) Recommended machine speed for automatic equipment is a maximum of 3500 parts per hour.**

**NOTE: ITEMS MARKED IN BOLD TEXT ARE HIGH WEAR ITEMS**

ITEM NO.	PART NO.	DESCRIPTION	MATERIAL SPECIFICATION	QTY.	REVISION	DATE
<p>DO NOT SCALE DRAWING</p> <p>UNLESS OTHERWISE SPECIFIED DIMENSIONS ARE IN INCHES. DECIMALS ARE FRACTIONS. DIMENSIONS ARE ANGLES.</p> <p>1/64 XX 1/32 1/16 *</p> <p>XXXX 1/64 1/32 1/16 *</p> <p>SURFACE FINISH: <input checked="" type="checkbox"/> ALL OVER</p> <p>THE INFORMATION CONTAINED WITHIN THIS DRAWING IS THE SOLE PROPERTY OF ETICO. NO REUSE OR REPRODUCTION OF THIS INFORMATION IS PERMITTED WITHOUT THE WRITTEN PERMISSION OF ETICO INCORPORATED. IS PROHIBITED.</p>						
MATERIAL: See Parts List		PARTS LIST		ETICO ENGINEERED PRODUCTS 25 BELLOWS STREET WARWICK, RI 02886 (401) 467-2400		
HEAT TREAT: -		FINISH: -		ECC Side Applicator		
SCALE: T:2		CAD FILE: -		PART NO: <b>PN187H-18</b>		
LVL: -		REVISION: -		CHECKED BY: JJ DATE: 22Jan02		
BY: DATE: -		APPLICATION: -		REV: D		