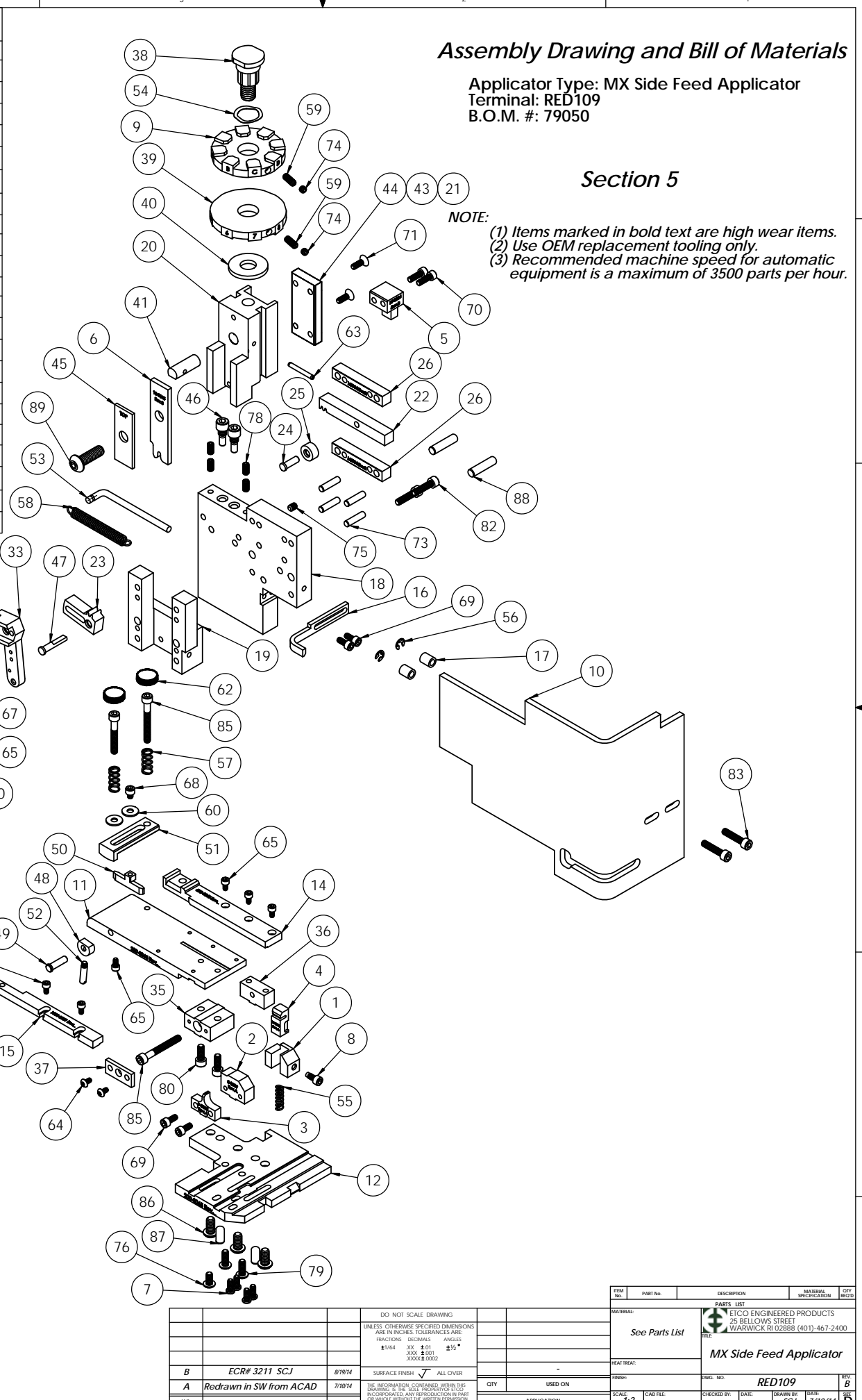


ITEM NO.	Part_Code	PART NUMBER	DESCRIPTION	QTY.
1	74287	8-3000	Cut-off Pad Retainer	1
2	75112	8-3009	*Cut-off Die	1
3	72327	9-3065	Anvil	1
4	74286	12-3000	Rear cut-off pad	1
5	75801	15-3024	Punch Driver	1
6	72329	13-3065	Wire Rolling Tool	1
7	75770	26-3020	#8-32 x 3/8" Button Hd Cap Screw	4
8	77265	26-3088	Locking Screw	1
9	70791	34-3032	Wire Crimp Dial	1
10	72271	199-3005-2	Guard	1
11	77376	250-3065	Feed Plate	1
12	77373	200-3065	Baseplate	1
13	75936	303-3024	Feed Finger	1
14	77377	500-3065	Rear Guide Rail	1
15	77313	1000-3051	Front Guide Rail	1
16	74568	1600-3000	Stripper / Wire Stop	1
17	74491	GS-375	Guard Spacer	2
18	71029	MX2A-S	Mounting Frame	1
19	71030	MX2B-S	Plunger Frame	1
20	74343	MX3	Ram	1
21	74344	MX4-S	Cam (1 5/8" Up Stroke)	1
22	74438	MX5-S	Cam Rack	1
23	74346	MX6	Gear Arm	1
24	74347	MX7	Cam Pin	1
25	74350	MX8	Cam Roller	1
26	74351	MX10-S	Rack Pad	2
27	74352	MX11	Gib	2
28	74356	MX12	Feed Finger Pivot Pin	1
29	74360	MX13	Adjusting Bar	1
30	74361	MX14-S	Feed Finger Arm	1
31	74362	MX15-S	Feed Finger Guide	1
32	74364	MX16	Retainer	1
33	74371	MX18-S	Swing Arm	1
34	74376	MX25	Stroke Adjustment Screw	1
35	74384	MX29-S	Slide Support	1
36	74388	MX30-S	Support Anchor	1
37	74390	MX32-S	Support Cover	1
38	74407	MX33	Mounting Post	1
39	74409	MX35	Insulation Dial	1
40	74411	MX36	Dial Spacer	1
41	74412	MX44	Locating Dowel	1
42	74415	MX45-S	Feed Finger Spring	1
43	74416	MX47-S	Cam (1 5/8" Down stroke)	1
44	74417	MX48-S	Cam (1 1/8" Up Stroke)	1
45	74418	MX49	Tool Retainer	1
46	74419	MX50	Safety Pivot Pin	3
47	74420	MX52	Pivot Pin	2
48	74425	MX84-S	Brake Cam	1
49	74426	MX85-S	Cam Pivot Pin	1
50	74428	MX86-S	Brake Shoe	1
51	75178	MX87-S	Lift Arm	1
52	74430	MX88-S	Lever	1
53	74614	MX90-S	Spring Bracket	1
54	72310	MX104	Wave Disc Spring	1
55	74578	4-034-875	Spring	1
56	75083	Irving 3100-18	External Retaining Ring	2
57	77322	LC-045E-10-M	Spring	2
58	74611	LE-037CD-6	Extension Spring	1
59	70739	McMaster-Carr #3126A53	Spring Plunger	2
60	72519	McMaster Carr #98029A043	#8 Hardened Washer	2
61	74447	McMaster-Carr #98296A109	Expansion Pin (1/16 x 1/2")	1
62	73785	SPI 99-602-5	#10 Black Knurled Knob	2
63	62040	1.8_1.00rp	1/8" x 1" Roll Pin	1
64	63792	6-32_25bh	#6-32 x 1/4" Button Hd Cap Screw	2
65	63207	6-32_25sh	#6-32 x 1/4" Socket Hd Cap Screw	7
66	63209	6-32_38sh	#6-32 x 3/8" Socket Hd Cap Screw	2

ITEM NO.	Part_Code	PART NUMBER	DESCRIPTION	QTY.
67	63210	8fw	#8 Flatwasher	1
68	60265	8-32_19sh	#8-32 x 3/16" Socket Hd Cap Screw	1
69	63161	8-32_38sh	#8-32 x 3/8" Socket Hd Cap Screw	4
70	63164	8-32_50sh	#8-32 x 1/2" Socket Hd Cap Screw	2
71	63052	8-32_50fh	#8-32 x 1/2" Flat Hd Cap Screw	2
72	63158	3.16_50dp	Ø3/16" x 1/2" Dowel Pin	4
73	63470	3.16_75dp	Ø3/16" x 3/4" Dowel Pin	4
74		10-32_12 sjs	#10-32 x 1/8" Socket Jam Screw	2
75	63054	10-32_25ss	#10-32 x 1/4" Socket Hd Set Screw	2
76	78993	10-32_38bh	#10-32 x 3/8" Button Hd Cap Screw	1
77	70110	10-32_38sh	#10-32 x 3/8" Socket Hd Cap Screw	1
78	71626	10-32_38ss	#10-32 x 3/8" Socket Hd Set Screw	4
79	76501	10-32_50bh	#10-32 x 1/2" Button Hd Cap Screw	6
80	63056	10-32_50sh	#10-32 x 1/2" Socket Hd Cap Screw	2
81	70293	10-32_63sh	#10-32 x 5/8" Socket Hd Cap Screw	1
82	63532	10-32_75sh	#10-32 x 3/4" Socket Hd Cap Screw	2
83	70925	10-32_88sh	#10-32 x 7/8" Socket Hd Cap Screw	2
84	77396	10-32_1.25sh	#10-32 x 1 1/4" Socket Hd Cap Screw	1
85	63826	10-32_1.50sh	#10-32 x 1 1/2" Socket Hd Cap Screw	2
86	63632	1.4-20_50bh	1/4-20 x 1/2" Button Hd Cap Screw	3
87	63827	1.4_50dp	Ø1/4" x 1/2" Dowel Pin	2
88	63510	1.4_1.00dp	1/4 x 1" Dowel Pin	2
89	63055	5.16-18_1.00bh	5/16-18 x 1" Button Hd Cap Screw	1

**NOTE: ITEMS MARKED IN BOLD TEXT ARE HIGH WEAR ITEMS**



**Assembly Drawing and Bill of Materials**

Applicator Type: MX Side Feed Applicator  
Terminal: RED109  
B.O.M. #: 79050

**Section 5**

**NOTE:**  
(1) Items marked in bold text are high wear items.  
(2) Use OEM replacement tooling only.  
(3) Recommended machine speed for automatic equipment is a maximum of 3500 parts per hour.

REV	DATE	DESCRIPTION	BY	CHKD	APP'D
B		ECR# 3211 SCJ	BYDAR		
A		Redrawn in SW from ACAD	BYDAR		

DO NOT SCALE DRAWING		UNLESS OTHERWISE SPECIFIED DIMENSIONS ARE IN INCHES. TOLERANCES ARE:	
FRACTIONS	DECIMALS	ANGLES	
±.004	.001	±.5°	
	.0005	±.1°	
	.0002	±.05°	
		±.01°	

DATE	7/10/14	SCALE	1:2	APP'D	BYDAR
REV	B	DATE	7/10/14	CHKD	SCJ