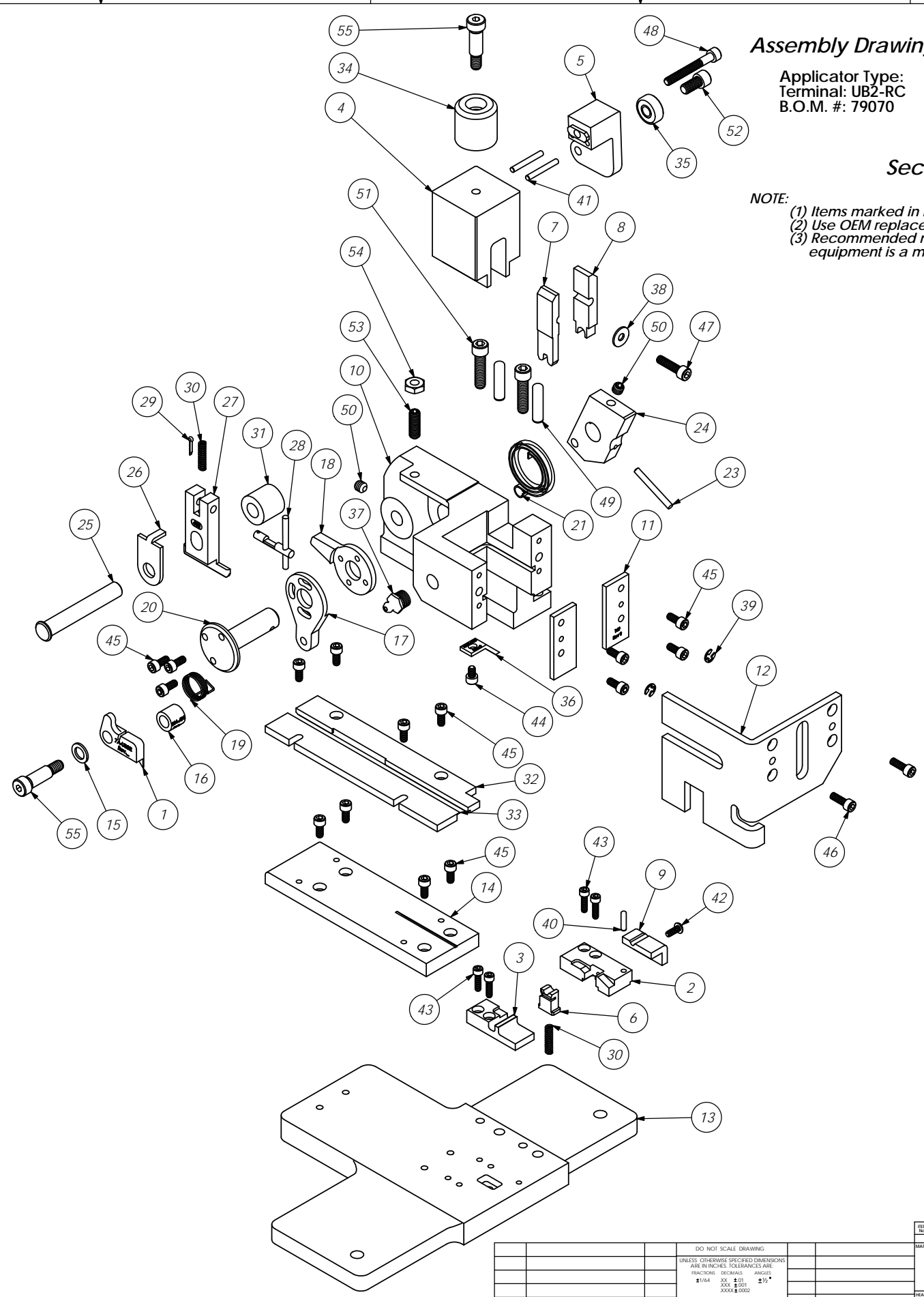


ITEM NO.	Part Code	PART NUMBER	DESCRIPTION	QTY.
1	70079	7A-UB3R	Feed Finger	1
2	71991	8-446	*Cut-Off Die	1
3	71995	9-383	*Anvil	1
4	71994	11-289	Plunger	1
5	75713	11B-1	Cam Roller Bracket	1
6	71992	12-331	*Cut-Off Pad	1
7	74516	13-014-2	*Wire rolling tool	1
8	73230	15-005	Cut-off punch driver	1
9	76917	26-415	Guide	1
10	72088	101-122	Top Casting	1
11	69859	169	Gib	2
12	77147	179-55	Guard	1
13	72104	202-23	Base Plate	1
14	71996	250-456	Feed Plate	1
15	73709	302-.048	Front Spacer	1
16	72007	304-.454	Feed Finger Spacer	1
17	74393	305-Finished	Feed Finger Arm	1
18	74396	306	Feed Stop Arm	1
19	76859	307-6	Feed Finger Spring	1
20	74400	308-Finished	Feed Shaft	1
21	74402	310	Cam Return Spring	1
22	73706	311-1	Spring Pin	1
23	77106	312-1	Cam Taper Pin	1
24	63654	314L-9A-CP	Cam Body	1
25	74495	401-Finished	Brake Shaft	1
26	74496	402	Spring Retainer	1
27	72006	403-237	Brake	1
28	74673	404_405as	Brake Cam Ass'y	1
29	74675	406	Cotter Pin	1
30	74676	407	Brake Spring	2
31	73216	408-.687	Brake Spacer	1
32	71999	500-476	Right Guide Rail	1
33	71998	1000-332	Left Guide Rail	1
34	77918	1102-FS	Floating Shank	1
35	75719	1142	Cam Roller Bearing	1
36	78389	1600-356	Stripper	1
37	63506	McMaster-Carr #1095K11	1/8 NPT Grease Fitting	1
38	72519	McMaster Carr #98029A043	#8 Hardened Washer	1
39	72069	McMaster Carr #98407A118	#8 E-Style Retaining Ring	2
40	63507	1.8_.50dp	Ø 1/8" x 1/2" Dowel	1
41	62849	1.8_1.00dp	1/8" x 1" Dowel	2
42	69494	6-32_.38bh	#6-32 x 3/8" Button Hd Cap Screw	1
43	63544	6-32_.50sh	#6-32 x 1/2" Socket Hd Cap Screw	4
44	63163	8-32_.25sh	#8-32 x 1/4" Socket Hd Cap Screw	1
45	63161	8-32_.38sh	#8-32 x 3/8" Socket Hd Cap Screw	15
46	63164	8-32_.50sh	#8-32 x 1/2" Socket Hd Cap Screw	2
47	63532	10-32_.75sh	#10-32 x 3/4" Socket Hd Cap Screw	1
48	63826	10-32_1.50sh	#10-32 x 1 1/2" Socket Hd Cap Screw	1
49	63510	1.4_1.00dp	1/4 x 1" Dowel Pin	2
50	63511	1.4-20_.25ssf	1/4-20 x 1/4" Socket Hd Set Screw	2
51	63168	1.4-20_1.00sh	1/4-20 x 1" Socket Hd Cap Screw	2
52	62184	1.4-28_.50sh	1/4-28 x 1/2" Socket Hd Cap Screw	1
53	63513	1.4-28_.75ss	1/4-28 x 3/4" Socket Set Screw	1
54	63512	1.4-28jn	1/4-28 Jam Nut	1
55	78918	5.16_.75shss	5/16 x 3/4" Shoulder Screw	2

NOTE: ITEMS MARKED IN BOLD TEXT ARE HIGH WEAR ITEMS



Assembly Drawing and Bill of Materials

Applicator Type:
Terminal: UB2-RC
B.O.M. #: 79070

Section 5

NOTE:
(1) Items marked in bold text are high wear items.
(2) Use OEM replacement tooling only.
(3) Recommended machine speed for automatic equipment is a maximum of 3500 parts per hour.

ITEM NO.	PART NO.	DESCRIPTION	MATERIAL SPECIFICATION	QTY.	REVISION
1	7A-UB3R	Feed Finger		1	
2	8-446	Cut-Off Die		1	
3	9-383	Anvil		1	
4	11-289	Plunger		1	
5	11B-1	Cam Roller Bracket		1	
6	12-331	Cut-Off Pad		1	
7	13-014-2	Wire rolling tool		1	
8	15-005	Cut-off punch driver		1	
9	26-415	Guide		1	
10	101-122	Top Casting		1	
11	169	Gib		2	
12	179-55	Guard		1	
13	202-23	Base Plate		1	
14	250-456	Feed Plate		1	
15	302-.048	Front Spacer		1	
16	304-.454	Feed Finger Spacer		1	
17	305-Finished	Feed Finger Arm		1	
18	306	Feed Stop Arm		1	
19	307-6	Feed Finger Spring		1	
20	308-Finished	Feed Shaft		1	
21	310	Cam Return Spring		1	
22	311-1	Spring Pin		1	
23	312-1	Cam Taper Pin		1	
24	314L-9A-CP	Cam Body		1	
25	401-Finished	Brake Shaft		1	
26	402	Spring Retainer		1	
27	403-237	Brake		1	
28	404_405as	Brake Cam Ass'y		1	
29	406	Cotter Pin		1	
30	407	Brake Spring		2	
31	408-.687	Brake Spacer		1	
32	500-476	Right Guide Rail		1	
33	1000-332	Left Guide Rail		1	
34	1102-FS	Floating Shank		1	
35	1142	Cam Roller Bearing		1	
36	1600-356	Stripper		1	
37	McMaster-Carr #1095K11	1/8 NPT Grease Fitting		1	
38	McMaster Carr #98029A043	#8 Hardened Washer		1	
39	McMaster Carr #98407A118	#8 E-Style Retaining Ring		2	
40	1.8_.50dp	Ø 1/8" x 1/2" Dowel		1	
41	1.8_1.00dp	1/8" x 1" Dowel		2	
42	6-32_.38bh	#6-32 x 3/8" Button Hd Cap Screw		1	
43	6-32_.50sh	#6-32 x 1/2" Socket Hd Cap Screw		4	
44	8-32_.25sh	#8-32 x 1/4" Socket Hd Cap Screw		1	
45	8-32_.38sh	#8-32 x 3/8" Socket Hd Cap Screw		15	
46	8-32_.50sh	#8-32 x 1/2" Socket Hd Cap Screw		2	
47	10-32_.75sh	#10-32 x 3/4" Socket Hd Cap Screw		1	
48	10-32_1.50sh	#10-32 x 1 1/2" Socket Hd Cap Screw		1	
49	1.4_1.00dp	1/4 x 1" Dowel Pin		2	
50	1.4-20_.25ssf	1/4-20 x 1/4" Socket Hd Set Screw		2	
51	1.4-20_1.00sh	1/4-20 x 1" Socket Hd Cap Screw		2	
52	1.4-28_.50sh	1/4-28 x 1/2" Socket Hd Cap Screw		1	
53	1.4-28_.75ss	1/4-28 x 3/4" Socket Set Screw		1	
54	1.4-28jn	1/4-28 Jam Nut		1	
55	5.16_.75shss	5/16 x 3/4" Shoulder Screw		2	