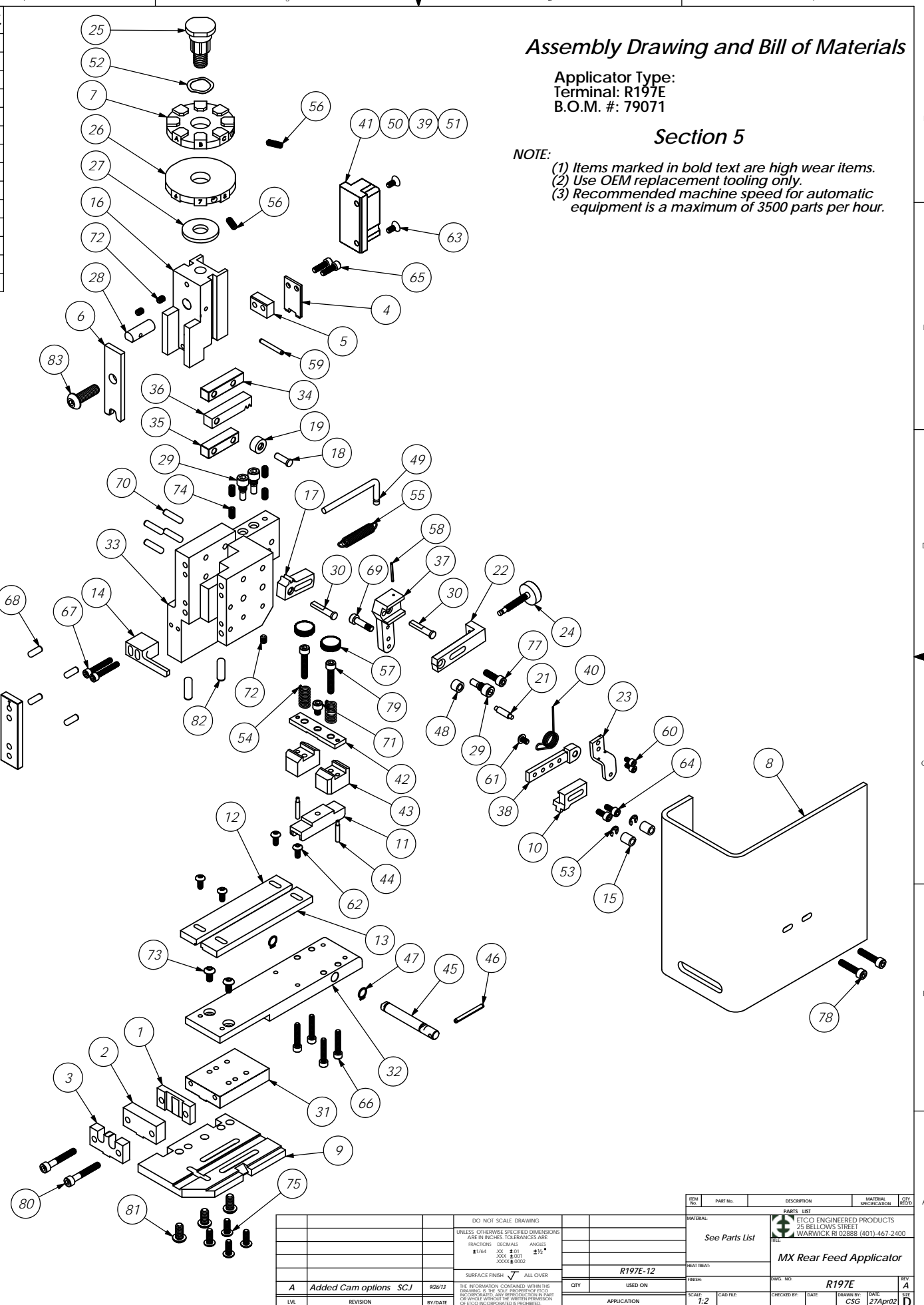


ITEM NO.	Part Code	PART NUMBER	DESCRIPTION	QTY.	ITEM NO.	Part Code	PART NUMBER	DESCRIPTION	QTY.
1	72468	8-3122	Rear Cut-off Die	1	70	63470	3.16_.75dp	Ø 3/16" x 3/4" Dowel Pin	4
2	72411	8A-3122	Front Cut-off Die	1	71	63473	10-32_.25sh	#10-32 x 1/4" Socket Hd Cap Screw	1
3	72179	9-3122	Wire Anvil	1	72	63054	10-32_.25ss	#10-32 x 1/4" Socket Hd Set Screw	3
4	72580	12-3122	Cut-off Punch	1	73	78993	10-32_.38bh	#10-32 x 3/8" Button Hd Cap Screw	2
5	73044	12A-3122	Cut-off Punch Spacer	1	74	71626	10-32_.38ss	#10-32 x 3/8" Socket Hd Set Screw	4
6	72161	13-3122	Wire Rolling Tool	1	75	76501	10-32_.50bh	#10-32 x 1/2" Button Hd Cap Screw	4
7	74218	34-3037	Wire Crimp Dial	1	76	63056	10-32_.50sh	#10-32 x 1/2" Socket Hd Cap Screw	4
8	75285	199-3001	Guard	1	77	70293	10-32_.63sh	#10-32 x 5/8" Socket Hd Cap Screw	1
9	75054	200-3122	Baseplate	1	78	70925	10-32_.88sh	#10-32 x 7/8" Socket Hd Cap Screw	2
10	72008	303-3122	Feed Finger	1	79	63155	10-32_1.00sh	#10-32 x 1" Socket Hd Cap Screw	2
11	74297	403-3122	Brake Shoe	1	80	77396	10-32_1.25sh	#10-32 x 1 1/4" Socket Hd Cap Screw	2
12	72661	500-3122	Left Guide Rail	1	81	63632	1.4-20_.50bh	1/4-20 x 1/2" Button Hd Cap Screw	3
13	72851	1000-3122	Right Guide Rail	1	82		1.4_.75dp	1/4" x 3/4" Dowel Pin	2
14	75287	1600-3011	Stripper	1	83	63055	5.16-18_1.00bh	5/16-18 x 1" Button Hd Cap Screw	1
15	74491	GS-375	Guard Spacer	2					
16	74343	MX3	Ram	1					
17	74346	MX6	Gear Arm	1					
18	74347	MX7	Cam Pin	1					
19	74350	MX8	Cam Roller	1					
20	74352	MX11	Gib	2					
21	74356	MX12	Feed Finger Pivot Pin	1					
22	74360	MX13	Adjusting Bar	1					
23	74364	MX16	Retainer	1					
24	74376	MX25	Stroke Adjustment Screw	1					
25	74407	MX33	Mounting Post	1					
26	74409	MX35	Insulation Dial	1					
27	74411	MX36	Dial Spacer	1					
28	74412	MX44	Locating Dowel	1					
29	74419	MX50	Safety Pivot Pin	3					
30	74420	MX52	Pivot Pin	2					
31	74908	MX54-R	Slide Support	1					
32	74816	MX55-R	Feed Plate	1					
33	74909	MX58-R	Frame	1					
34	74912	MX69-R	Upper Rack Pad	1					
35	74913	MX70-R	Lower Rack Pad	1					
36	74914	MX71-R	Cam Rack	1					
37	72285	MX72-R-1	Swing Arm	1					
38	72287	MX73-R-1	Feed Arm	1					
39	74915	MX75-R	Cam, 1 5/8" Downstroke	1					
40	72596	MX80-1-R	Feed Finger Spring	1					
41	74521	MX89-R	Cam, 1 1/8" Upstroke	1					
42	74820	MX91-R	Lifter Plate	1					
43	74821	MX92-R	Brake Support	2					
44	74822	MX93-R	Lifter	2					
45	74823	MX94-R	Brake Shaft	1					
46	74825	MX96-R	Brake Handle	1					
47	74827	MX97-R	Retaining Ring	2					
48	72286	MX99-R-1	Spacer	1					
49	74917	MX100-R	Spring Bracket	1					
50	76682	MX101-R	Cam, 1 5/8" Upstroke	1					
51	72204	MX102-R	Cam (K Press Down Stroke)	1					
52	72310	MX104	Wave Disc Spring	1					
53	75083	Irving 3100-18	External Retaining Ring	2					
54	75342	LC-045E-6-M	Brake Spring	2					
55	74611	LE-037CD-6	Extension Spring	1					
56	70739	McMaster-Carr #3126A53	Spring Plunger	2					
57	73785	SPI 99-602-5	#10 Black Knurled Knob	2					
58	62294	1.16_.75rp	1/16" x 3/4" Roll Pin	1					
59	62040	1.8_1.00rp	1/8" x 1" Roll Pin	1					
60	63207	6-32_.25sh	#6-32 x 1/4" Socket Hd Cap Screw	2					
61	63212	8-32_.25bh	#8-32 x 1/4" Button Hd Cap Screw	1					
62	61472	8-32_.38bh	#8-32 x 3/8" Button Hd Cap Screw	4					
63	63508	8-32_.38fh	#8-32 x 3/8" Flat Hd Cap Screw	2					
64	63161	8-32_.38sh	#8-32 x 3/8" Socket Hd Cap Screw	2					
65		8-32_.56sh	#8-32 x 9/16" Socket Hd Cap Screw	2					
66	63949	8-32_.88sh	#8-32 x 7/8" Socket Hd Cap Screw	4					
67	63213	8-32_1.00sh	#8-32 x 1" Socket Hd Cap Screw	2					
68	63158	3.16_.50dp	Ø 3/16" x 1/2" Dowel Pin	4					
69	63194	3.16_10-32_.50 shs	3/16" x 1/2" x 10-32 Shoulder Screw	1					



Assembly Drawing and Bill of Materials

Applicator Type:
Terminal: R197E
B.O.M. #: 79071

Section 5

- NOTE:
- (1) Items marked in bold text are high wear items.
 - (2) Use OEM replacement tooling only.
 - (3) Recommended machine speed for automatic equipment is a maximum of 3500 parts per hour.

ITEM NO.	PART NO.	DESCRIPTION	MATERIAL SPECIFICATION	QTY.
PARTS LIST				
		See Parts List		
ETCO ENGINEERED PRODUCTS 25 BELLEWS STREET WARWICK, RI 02886 (401) 467-2400				
MX Rear Feed Applicator				
REV. A		R197E		DATE: 27Apr02
DRAWN BY: CSC		CHECKED BY: CSC		DATE: 27Apr02
APPROVED BY: CSC		DATE: 27Apr02		DATE: 27Apr02