

Assembly Drawing and Bill of Materials

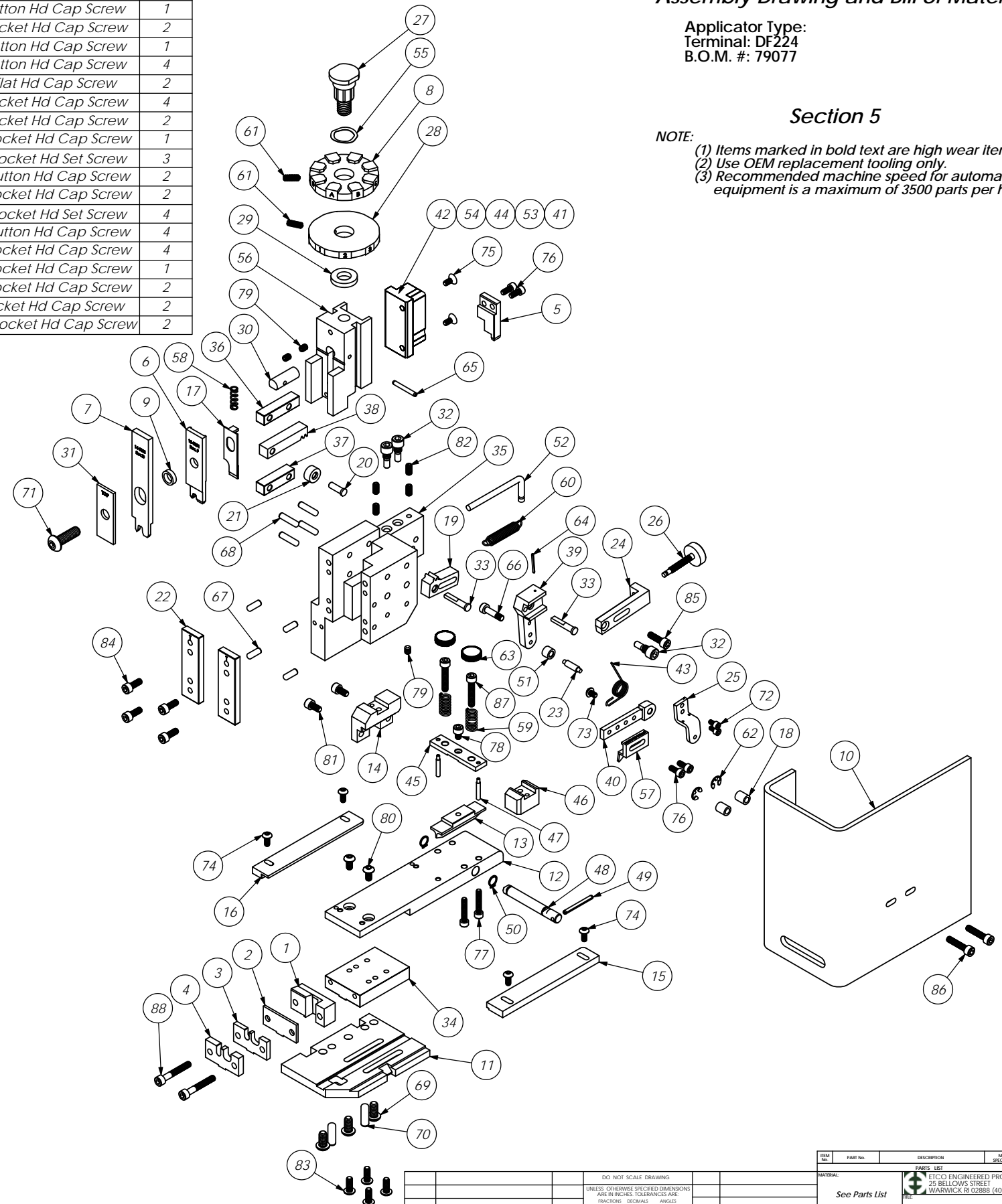
Applicator Type:
Terminal: DF224
B.O.M. #: 79077

Section 5

NOTE:
(1) Items marked in bold text are high wear items.
(2) Use OEM replacement tooling only.
(3) Recommended machine speed for automatic equipment is a maximum of 3500 parts per hour.

ITEM NO.	Part_Code	PART NUMBER	DESCRIPTION	QTY.	ITEM NO.	Part_Code	PART NUMBER	DESCRIPTION	QTY.
1	77644	8-3124	*Rear Cut-off Die	1	70		1.4_.75dp	1/4" x 3/4" Dowel Pin	2
2	77582	8A-3124	*Front Cut-off Die	1	71	63055	5.16-18_1.00bh	5/16-18 x 1" Button Hd Cap Screw	1
3	77581	9-3124	*Wire Anvil	1	72	63207	6-32_.25sh	#6-32 x 1/4" Socket Hd Cap Screw	2
4	77579	9A-3124	*Insulation Anvil	1	73	63212	8-32_.25bh	#8-32 x 1/4" Button Hd Cap Screw	1
5	78382	12-3124	*Cut-off Punch	1	74	61472	8-32_.38bh	#8-32 x 3/8" Button Hd Cap Screw	4
6	72209	13-5001	*Wire Rolling Tool	1	75	63508	8-32_.38fh	#8-32 x 3/8" Flat Hd Cap Screw	2
7	72208	14-5001	*Insulation Rolling Tool	1	76	63161	8-32_.38sh	#8-32 x 3/8" Socket Hd Cap Screw	4
8	78410	34-3124	Wire Crimp Dial	1	77	63949	8-32_.88sh	#8-32 x 7/8" Socket Hd Cap Screw	2
9	70472	142S-3001	IRT Spacer	1	78	63473	10-32_.25sh	#10-32 x 1/4" Socket Hd Cap Screw	1
10	75285	199-3001	Guard	1	79	63054	10-32_.25ss	#10-32 x 1/4" Socket Hd Set Screw	3
11	78387	200-3124	Baseplate	1	80	78993	10-32_.38bh	#10-32 x 3/8" Button Hd Cap Screw	2
12	78383	250-3124	Feed Plate	1	81	70110	10-32_.38sh	#10-32 x 3/8" Socket Hd Cap Screw	2
13	78386	403-3124	Brake Shoe	1	82	71626	10-32_.38ss	#10-32 x 3/8" Socket Hd Set Screw	4
14	78403	403A-3124	Brake Support	1	83	76501	10-32_.50bh	#10-32 x 1/2" Button Hd Cap Screw	4
15	78384	500-3124	Right Guide Rail	1	84	63056	10-32_.50sh	#10-32 x 1/2" Socket Hd Cap Screw	4
16	78385	1000-3124	Left Guide Rail	1	85	70293	10-32_.63sh	#10-32 x 5/8" Socket Hd Cap Screw	1
17	72224	1600-5001	Ejector Punch	1	86	70925	10-32_.88sh	#10-32 x 7/8" Socket Hd Cap Screw	2
18	74491	GS-375	Guard Spacer	2	87	63155	10-32_1.00sh	#10-32 x 1" Socket Hd Cap Screw	2
19	74346	MX6	Gear Arm	1	88	77396	10-32_1.25sh	#10-32 x 1 1/4" Socket Hd Cap Screw	2
20	74347	MX7	Cam Pin	1					
21	74350	MX8	Cam Roller	1					
22	74352	MX11	Gib	2					
23	74356	MX12	Feed Finger Pivot Pin	1					
24	74360	MX13	Adjusting Bar	1					
25	74364	MX16	Retainer	1					
26	74376	MX25	Stroke Adjustment Screw	1					
27	74407	MX33	Mounting Post	1					
28	74409	MX35	Insulation Dial	1					
29	78411	MX36-155	Dial Spacer	1					
30	74412	MX44	Locating Dowel	1					
31	74418	MX49	Tool Retainer	1					
32	74419	MX50	Safety Pivot Pin	3					
33	74420	MX52	Pivot Pin	2					
34	74908	MX54-R	Slide Support	1					
35	74909	MX58-R	Frame	1					
36	74912	MX69-R	Upper Rack Pad	1					
37	74913	MX70-R	Lower Rack Pad	1					
38	74914	MX71-R	Cam Rack	1					
39	72285	MX72-R-1	Swing Arm	1					
40	72287	MX73-R-1	Feed Arm	1					
41	74915	MX75-R	Cam, 1 5/8" Downstroke	1					
42	78409	MX75-R-1	Cam	1					
43	72596	MX80-1-R	Feed Finger Spring	1					
44	74521	MX89-R	Cam, 1 1/8" Upstroke	1					
45	74820	MX91-R	Lifter Plate	1					
46	74821	MX92-R	Brake Support	1					
47	74822	MX93-R	Lifter	2					
48	74823	MX94-R	Brake Shaft	1					
49	74825	MX96-R	Brake Handle	1					
50	74827	MX97-R	Retaining Ring	2					
51	72286	MX99-R-1	Spacer	1					
52	74917	MX100-R	Spring Bracket	1					
53	76682	MX101-R	Cam, 1 5/8" Upstroke	1					
54	72204	MX102-R	Cam (K Press Down Stroke)	1					
55	72310	MX104	Wave Disc Spring	1					
56	72221	MX412-IID-R	Ram	1					
57	72231	MX419-IID-R	Feed Finger	1					
58	72353	LC-038C-8-M	Ejector Punch Spring	1					
59	75342	LC-045E-6-M	Brake Spring	2					
60	74611	LE-037CD-6	Extension Spring	1					
61	70739	McMaster-Carr #3126A53	Spring Plunger	2					
62	72069	McMaster Carr #98407A122	#10 E-Style Retaining Ring	2					
63	73785	SPI 99-602-5	#10 Black Knurled Knob	2					
64	62294	1.16_.75rp	1/16" x 3/4" Roll Pin	1					
65	62040	1.8_1.00rp	1/8" x 1" Roll Pin	1					
66	63194	3.16_10-32_.50 shs	3/16" x 1/2" x 10-32 Shoulder Screw	1					
67	63158	3.16_.50dp	Ø 3/16" x 1/2" Dowel Pin	4					
68	63470	3.16_.75dp	Ø 3/16" x 3/4" Dowel Pin	4					
69	63632	1.4-20_.50bh	1/4-20 x 1/2" Button Hd Cap Screw	3					

NOTE: ITEMS MARKED IN BOLD TEXT ARE HIGH WEAR ITEMS



ITEM NO.	PART NO.	DESCRIPTION	MATERIAL SPECIFICATION	QTY.
DO NOT SCALE DRAWING				
UNLESS OTHERWISE SPECIFIED DIMENSIONS ARE IN INCHES. TOLERANCES ARE FRACTIONAL DECIMALS ANGLES				
1/64 XX .01 1/16 XXX .005 1/32 XXXX .0002				
SURFACE FINISH: ✓ ALL OVER				
THE INFORMATION CONTAINED WITHIN THIS DRAWING IS THE SOLE PROPERTY OF ETICO. NO REPRODUCTION OR TRANSMISSION OF THIS INFORMATION IS PERMITTED WITHOUT THE WRITTEN PERMISSION OF ETICO INCORPORATED. IS PREPARED				
A Added Cam options SCJ		RD072	DF224	REV A
LVL	REVISION	BY/DATE	APPROVAL	DATE