

Assembly Drawing and Bill of Materials

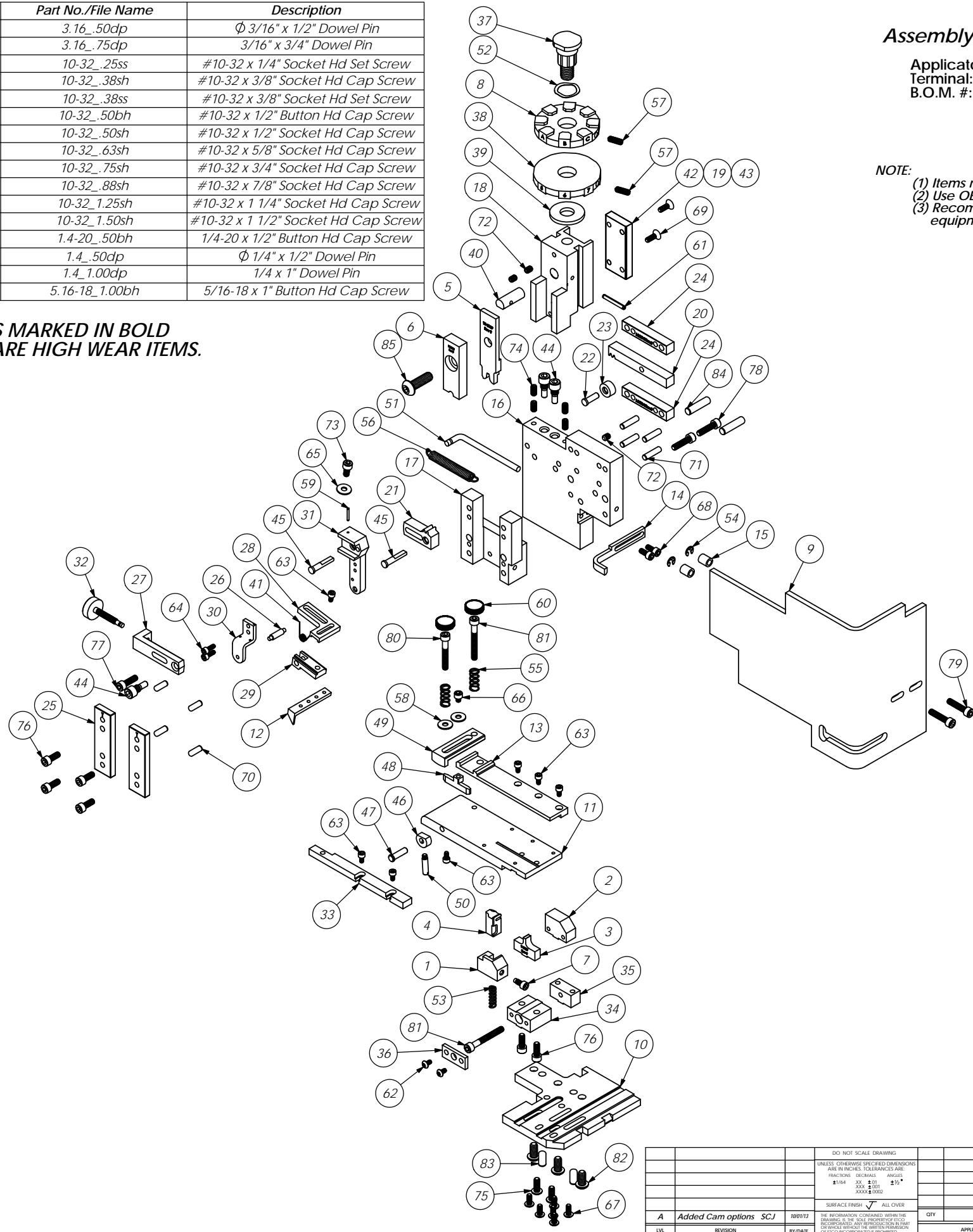
Applicator Type:
Terminal: PN109
B.O.M. #: 79080

Section 5

- NOTE:
- (1) Items marked in bold text are high wear items.
 - (2) Use OEM replacement tooling only.
 - (3) Recommended machine speed for automatic equipment is a maximum of 3500 parts per hour.

NOTE: ITEMS MARKED IN BOLD TEXT ARE HIGH WEAR ITEMS.

Item	Part Code	QTY.	Part No./File Name	Description	Item	Part Code	QTY.	Part No./File Name	Description
1	74440	1	8-3003	Front Cut-off Pad Retainer	70	63158	4	3.16_.50dp	Ø 3/16" x 1/2" Dowel Pin
2	78601	1	8-3129	Die	71	63470	4	3.16_.75dp	3/16" x 3/4" Dowel Pin
3	78390	1	9-3129	Anvil	72	63054	3	10-32_.25ss	#10-32 x 1/4" Socket Hd Set Screw
4	78427	1	12-3129	Cut-off Pad	73	70110	1	10-32_.38sh	#10-32 x 3/8" Socket Hd Cap Screw
5	78599	1	13-3129	Wire Rolling Tool	74	71626	4	10-32_.38ss	#10-32 x 3/8" Socket Hd Set Screw
6	74446	1	15-3003	Cut-off Pad Driver	75	76501	2	10-32_.50bh	#10-32 x 1/2" Button Hd Cap Screw
7	77265	1	26-3088	Locking Screw	76	63056	6	10-32_.50sh	#10-32 x 1/2" Socket Hd Cap Screw
8	78430	1	34-3129	Wire Crimp Dial	77	70293	1	10-32_.63sh	#10-32 x 5/8" Socket Hd Cap Screw
9	76403	1	199-3005	Safety Guard	78	63532	2	10-32_.75sh	#10-32 x 3/4" Socket Hd Cap Screw
10	78753	1	200-3129	Baseplate	79	70925	2	10-32_.88sh	#10-32 x 7/8" Socket Hd Cap Screw
11	78519	1	250-3129	Feed Plate	80	77396	1	10-32_1.25sh	#10-32 x 1 1/4" Socket Hd Cap Screw
12	76484	1	303-3033	Feed Finger	81	63826	2	10-32_1.50sh	#10-32 x 1 1/2" Socket Hd Cap Screw
13	78525	1	500-3129	Rear Guide Rail	82	63632	3	1.4-20_.50bh	1/4-20 x 1/2" Button Hd Cap Screw
14	74568	1	1600-3000	Stripper / Wire Stop	83	63827	2	1.4_.50dp	Ø 1/4" x 1/2" Dowel Pin
15	74491	2	GS-375	Guard Spacer	84	63510	2	1.4_1.00dp	1/4 x 1" Dowel Pin
16	71029	1	MX2A-S	Mounting Frame	85	63055	1	5.16-18_1.00bh	5/16-18 x 1" Button Hd Cap Screw
17	71030	1	MX2B-S	Plunger Frame					
18	74343	1	MX3	Ram					
19	74344	1	MX4-S	Cam (1 5/8" Up Stroke)					
20	74438	1	MX5-S	Cam Rack					
21	74346	1	MX6	Gear Arm					
22	74347	1	MX7	Cam Pin					
23	74350	1	MX8	Cam Roller					
24	74351	2	MX10-S	Rack Pad					
25	74352	2	MX11	Gib					
26	74356	1	MX12	Feed Finger Pivot Pin					
27	74360	1	MX13	Adjusting Bar					
28	74361	1	MX14-S	Feed Finger Arm					
29	74362	1	MX15-S	Feed Finger Guide					
30	74364	1	MX16	Retainer					
31	74371	1	MX18-S	Swing Arm					
32	74376	1	MX25	Stroke Adjustment Screw					
33	74840	1	MX28-1-S	Front Guide Rail					
34	74384	1	MX29-S	Slide Support					
35	74388	1	MX30-S	Support Anchor					
36	74390	1	MX32-S	Support Cover					
37	74407	1	MX33	Mounting Post					
38	74409	1	MX35	Insulation Dial					
39	74411	1	MX36	Dial Spacer					
40	74412	1	MX44	Locating Dowel					
41	74415	1	MX45-S	Feed Finger Spring					
42	74416	1	MX47-S	Cam (1 5/8" Down stroke)					
43	74417	1	MX48-S	Cam (1 1/8" Up Stroke)					
44	74419	3	MX50	Safety Pivot Pin					
45	74420	2	MX52	Pivot Pin					
46	74425	1	MX84-S	Brake Cam					
47	74426	1	MX85-S	Cam Pivot Pin					
48	74428	1	MX86-S	Brake Shoe					
49	75178	1	MX87-S	Lift Arm					
50	74430	1	MX88-S	Lever					
51	74614	1	MX90-S	Spring Bracket					
52	72310	1	MX104	Wave Disc Spring					
53	74578	1	4-034-875	Spring					
54	75083	2	Irving 3100-18	External Retaining Ring					
55	77322	2	LC-045E-10-M	Spring					
56	74611	1	LE-037CD-6	Extension Spring					
57	70739	2	McMaster-Carr #3126A53	Spring Plunger					
58	72519	2	McMaster Carr #98029A043	#8 Hardened Washer					
59	74447	1	McMaster-Carr #98296A109	Expansion Pin (1/16 x 1/2")					
60	73785	2	SPI 99-602-5	#10 Black Knurled Knob					
61	62040	1	1.8_1.00rp	1/8" x 1" Roll Pin					
62	63792	2	6-32_.25bh	#6-32 x 1/4" Button Hd Cap Screw					
63	63207	7	6-32_.25sh	#6-32 x 1/4" Socket Hd Cap Screw					
64	63209	2	6-32_.38sh	#6-32 x 3/8" Socket Hd Cap Screw					
65	63210	1	8fw	#8 Flatwasher					
66	60265	1	8-32_.19sh	#8-32 x 3/16" Socket Hd Cap Screw					
67	61472	6	8-32_.38bh	#8-32 x 3/8" Button Hd Cap Screw					
68	63161	2	8-32_.38sh	#8-32 x 3/8" Socket Hd Cap Screw					
69	63052	2	8-32_.50fh	#8-32 x 1/2" Flat Hd Cap Screw					



ITEM NO.	PART NO.	DESCRIPTION	MATERIAL SPECIFICATION	QTY. REQD.
PARTS LIST				
See Parts List				
ETCO ENGINEERED PRODUCTS 25 BELLEW'S STREET WARWICK, RI 02886 (401) 467-2400				
MX Side Feed Applicator				
SURFACE FINISH: <input checked="" type="checkbox"/> ALL OVER				
THE INFORMATION CONTAINED WITHIN THIS DRAWING IS THE SOLE PROPERTY OF ETCO. NO REPRODUCTION OR TRANSMISSION OF ANY INFORMATION IS PERMITTED WITHOUT THE WRITTEN PERMISSION OF ETCO INCORPORATED IS REQUIRED.				
REV. NO.	DATE	BY	DATE	BY
A		Added Cam options SCJ	10/07/13	
SCALE: T-2 CAD FILE: CHECKED BY: DATE: DRAWN BY: DATE: USED ON: APPLICATION: ETCO INCORPORATED IS PERMITTED.				