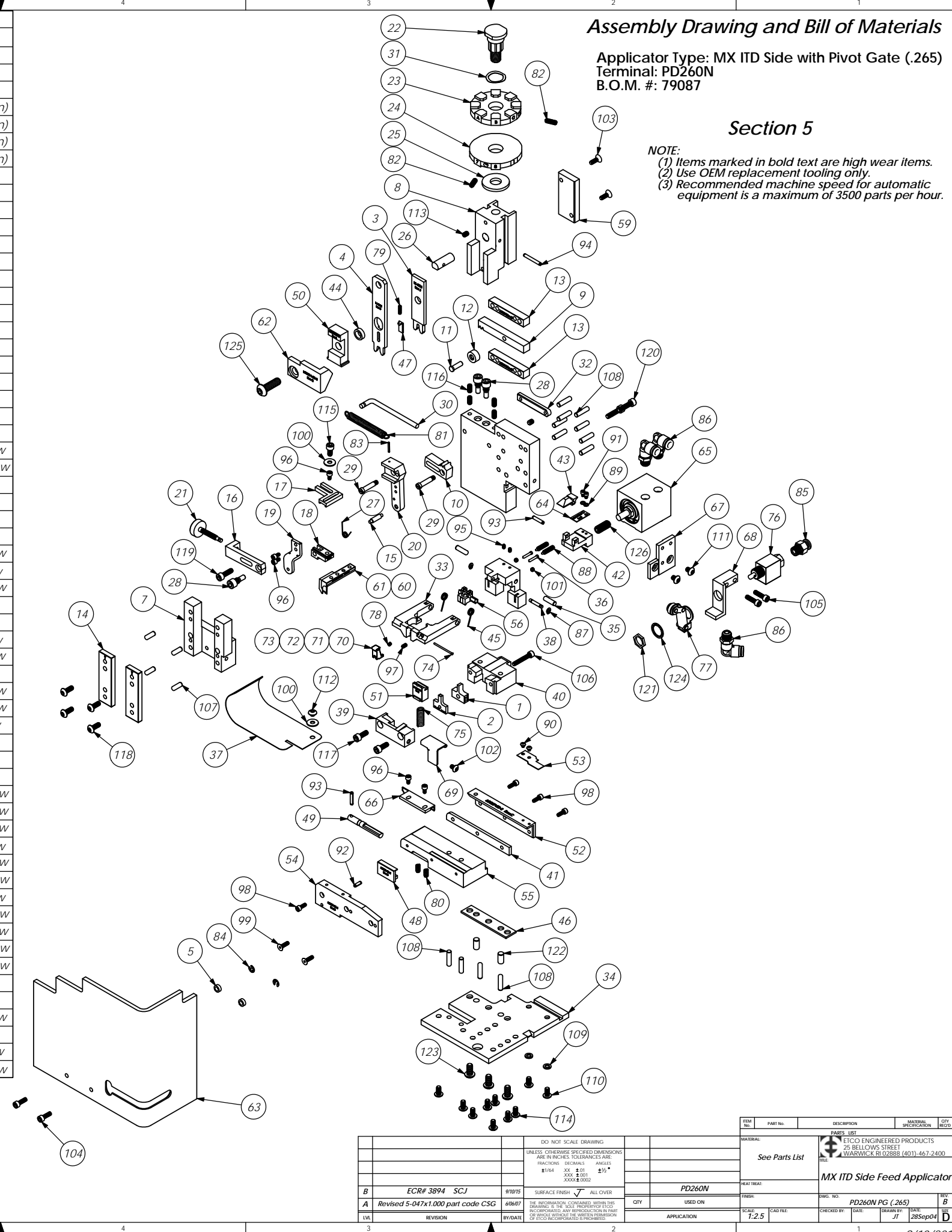


Parts List				Parts List					
Item	Part Code	QTY.	Part No./File Name	Description	Item	Part Code	QTY.	Part No./File Name	Description
1	76678	1	9-4004	Wire Anvil	67	78733	1	MX358-1-ITD-S	Valve Mounting Plate
2	76679	1	9A-4004	Insulation Anvil	68	61993	1	MX358-2-ITD-S	Valve Mounting Plate
3	76680	1	13-4004	Wire Rolling Tool	69	78835	1	MX360-ITD-S	Scrap Retainer
4	76659	1	14-4004	Insulation Rolling Tool	70	78488	1	MX361-9-ITD-S	Pivot Gate (Ø.070-Ø.100 Insulation)
5	73888	2	GS-125	Guard Spacer	71	78489	1	MX361-10-ITD-S	Pivot Gate (Ø.090-Ø.120 Insulation)
6	71494	1	MX2A-S-1	Mounting Frame	72	78490	1	MX361-11-ITD-S	Pivot Gate (Ø.110-Ø.140 Insulation)
7	71030	1	MX2B-S	Plunger Frame	73	78491	1	MX361-12-ITD-S	Pivot Gate (Ø.130-Ø.160 Insulation)
8	74343	1	MX3	Ram	74	71008	1	MX362-ITD-S	Pivot Gate Pin
9	74438	1	MX5-S	Cam Rack	75	72350	1	5-047x1.000	Compression Spring
10	74346	1	MX6	Gear Arm	76	72318	1	Clippard MJV-3	3-Way Valve
11	74347	1	MX7	Cam Pin	77	72317	1	Clippard #12296	Cam Follower
12	74350	1	MX8	Cam Roller	78	71013	1	LC-014A-1-M	Compression Spring
13	74351	2	MX10-S	Rack Pad	79	72315	1	LC-022A-4	Compression Spring
14	74352	2	MX11	Gib	80	78681	2	LC-029B-3-M	Compression Spring
15	74356	1	MX12	Feed Finger Pivot Pin	81	74611	1	LE-037CD-6	Extension Spring
16	74360	1	MX13	Adjusting Bar	82	70739	2	McMaster-Carr #3126A53	Spring Plunger
17	76868	1	MX14-1-S	Feed Finger Arm	83	74447	1	McMaster-Carr #98296A109	Expansion Pin (1/16 x 1/2")
18	76874	1	MX15-1-S	Feed Finger Guide	84	72069	2	McMaster Carr #98407A118	#8 E-Style Retaining Ring
19	74364	1	MX16	Retainer	85	73222	1	Pisco PC250-N1U	1/4" x 1/8" NPT Straight
20	71495	1	MX18-S-1	Swing Arm	86	72352	3	Pisco PL250-N1U	Ø1/4" x 1/8" NPT Elbow Fitting
21	74376	1	MX25	Stroke Adjustment Screw	87	63200	2	Truarc #5555-12	Retaining Ring
22	74407	1	MX33	Mounting Post	88	63201	2	Vlier #PH-51-P	Spring Plunger
23	70659	1	MX34-B	Wire Crimp Dial	89	63202	2	4lw	#4 Lock Washer
24	74409	1	MX35	Insulation Dial	90	63203	2	4-40_.13bh	#4-40 x 1/8" Button Hd Cap Screw
25	74411	1	MX36	Dial Spacer	91	63204	2	4-40_.16sh	#4-40 x 5/32" Socket Hd Cap Screw
26	74412	1	MX44	Locating Dowel	92	63205	1	1.8_.38rp	Ø 1/8" x 3/8" Roll Pin
27	74415	1	MX45-S	Feed Finger Spring	93	63053	2	1.8_.63rp	1/8" x 5/8" Roll Pin
28	74419	3	MX50	Safety Pivot Pin	94	62040	1	1.8_1.00rp	1/8" x 1" Roll Pin
29	71493	2	MX52-S-1	Pivot Pin	95	63206	2	5-40_.19ssf	#5-40 x 3/16" Socket Set Screw
30	74614	1	MX90-S	Spring Bracket	96	63207	5	6-32_.25sh	#6-32 x 1/4" Socket Hd Cap Screw
31	72310	1	MX104	Wave Disc Spring	97	63208	1	6-32_.25ssf	#6-32 x 1/4" Socket Hd Set Screw
32	71678	1	MX105-S	Pivot Pin Plate	98	63209	4	6-32_.38sh	#6-32 x 3/8" Socket Hd Cap Screw
33	78450	1	MX301-12-ITD-S	Latch Gate	99	63057	2	6-32_.50fh	#6-32 x 1/2" Flat Hd Cap Screw
34	72261	1	MX302-1-ITD-S	Base Plate	100	63210	2	8fw	#8 Flatwasher
35	76563	2	MX304-ITD-S	Hinge Pin	101	63211	2	8-32_.13ssf	#8-32 x 1/8" Socket Hd Set Screw
36	76564	2	MX305-ITD-S	Pin	102	63212	1	8-32_.25bh	#8-32 x 1/4" Button Hd Cap Screw
37	76566	1	MX307-ITD-S	Stock Chute	103	63052	2	8-32_.50fh	#8-32 x 1/2" Flat Hd Cap Screw
38	76567	1	MX308-ITD-S	Latch Pivot Pin	104	63164	2	8-32_.50sh	#8-32 x 1/2" Socket Hd Cap Screw
39	78936	1	MX309-4-ITD-S	Cut-off Keeper	105	63162	2	8-32_.63sh	#8-32 x 5/8" Socket Hd Cap Screw
40	72257	1	MX310-1-ITD-S	Die Holder	106	63213	1	8-32_1.00sh	#8-32 x 1" Socket Hd Cap Screw
41	76570	1	MX311-ITD-S	Left Feed Shim (1/4")	107	63158	4	3.16_.50dp	Ø 3/16" x 1/2" Dowel Pin
42	72259	1	MX313-1-ITD-S	Insulation Pusher for 1/4" Terminal	108	63470	12	3.16_.75dp	Ø 3/16" x 3/4" Dowel Pin
43	76573	1	MX314-ITD-S	Catch	109	78517	2	10lw	#10 Lockwasher
44	76574	1	MX315-ITD-S	Insulation Tool Spacer	110	63531	2	10-24_.38bh	#10-24 x 3/8" Button Hd Cap Screw
45	76575	2	MX316-ITD-S	Latch Spring	111	78687	2	10-32_.25bh	#10-32 x 1/4" Button Hd Cap Screw
46	76576	1	MX317-ITD-S	Base Plate Spacer	112	78327	1	10-32_.13bh	#10-32 x 1/8" Button Hd Cap Screw
47	76578	1	MX319-ITD-S	Knock off	113	63054	2	10-32_.25ss	#10-32 x 1/4" Socket Hd Set Screw
48	76579	1	MX320-ITD-S	Brake	114	78993	8	10-32_.38bh	#10-32 x 3/8" Button Hd Cap Screw
49	76580	1	MX321-ITD-S	Brake Actuator	115	70110	1	10-32_.38sh	#10-32 x 3/8" Socket Hd Cap Screw
50	76583	1	MX324-ITD-S	Cut-off Pad Pusher	116	63056	2	10-32_.38ssf	#10-32 x 3/8" Socket Hd Set Screw
51	71014	1	MX326-8-ITD-S	Cut-off Pad	117	63056	2	10-32_.50sh	#10-32 x 1/2" Socket Hd Cap Screw
52	76586	1	MX327-ITD-S	Left Feed Rail	118	76501	4	10-32_.50bh	#10-32 x 1/2" Button Hd Cap Screw
53	76587	1	MX328-ITD-S	Hold Down Spring	119	70293	1	10-32_.63sh	#10-32 x 5/8" Socket Hd Cap Screw
54	76588	1	MX329-ITD-S	Right Feed Rail	120	63532	2	10-32_.75sh	#10-32 x 3/4" Socket Hd Cap Screw
55	76589	1	MX330-ITD-S	Feed Plate	121		1	15.32_.32 hex nut	Hex Nut
56	76590	1	MX331-ITD-S	Latch (Automatic)	122	63827	2	1.4_.50dp	Ø 1/4" x 1/2" Dowel Pin
57	76591	1	MX332-ITD-S	Support	123	63632	3	1.4-20_.50bh	1/4-20 x 1/2" Button Hd Cap Screw
58	76592	1	MX333-ITD-S	Latch (1/4" Wire Stop)	124		1	1.2isw	1/2" Internal Star Washer
59	76608	1	MX335-ITD-S	Cam	125	63055	1	5.16-18_1.00bh	5/16-18 x 1" Button Hd Cap Screw
60	76661	1	MX337-ITD-S	Feed Finger (fed between carrier and inslu ear)	126	71086	1	5.16-24_.75ssf	5/16-24 x 3/4" Socket Hd Set Screw
61	71686	1	MX337-2-ITD-S	Feed Finger (fed in carrier strip hole)					
62	72233	1	MX338-1-ITD-S	Arm Switch Cam (1 1/8" Stroke)					
63	70745	1	MX339-ITD-S	Guard					
64	72260	1	MX344-1-ITD-S	Leaf Spring					
65	72099	1	MX348-ITD-S	.550 Strike Slide Cylinder					
66	72893	1	MX357-ITD-S	Bracket					

NOTE: ITEMS MARKED IN BOLD TEXT ARE HIGH WEAR ITEMS



Assembly Drawing and Bill of Materials

Applicator Type: MX ITD Side with Pivot Gate (.265)
Terminal: PD260N
B.O.M. #: 79087

Section 5

NOTE:
(1) Items marked in bold text are high wear items.
(2) Use OEM replacement tooling only.
(3) Recommended machine speed for automatic equipment is a maximum of 3500 parts per hour.

REV	DATE	DESCRIPTION	BY	CHKD	APP'D
1		INITIAL RELEASE			
2		REVISION			
3		REVISION			

DO NOT SCALE DRAWING	UNLESS OTHERWISE SPECIFIED DIMENSIONS ARE IN INCHES. TOLERANCES ARE:
FRACTIONS	DECIMALS
±.004	±.01
±.001	±.005
±.0005	±.001
±.0002	±.0005

REVISION	BY/DATE	DESCRIPTION
1		INITIAL RELEASE
2		REVISION
3		REVISION

DATE	SCALE	APP'D	CHKD	BY
	1:2.5			

PARTS LIST	DESCRIPTION	QTY
See Parts List	PD260N	

DATE	SCALE	APP'D	CHKD	BY
	1:2.5			

DATE	SCALE	APP'D	CHKD	BY
	1:2.5			