

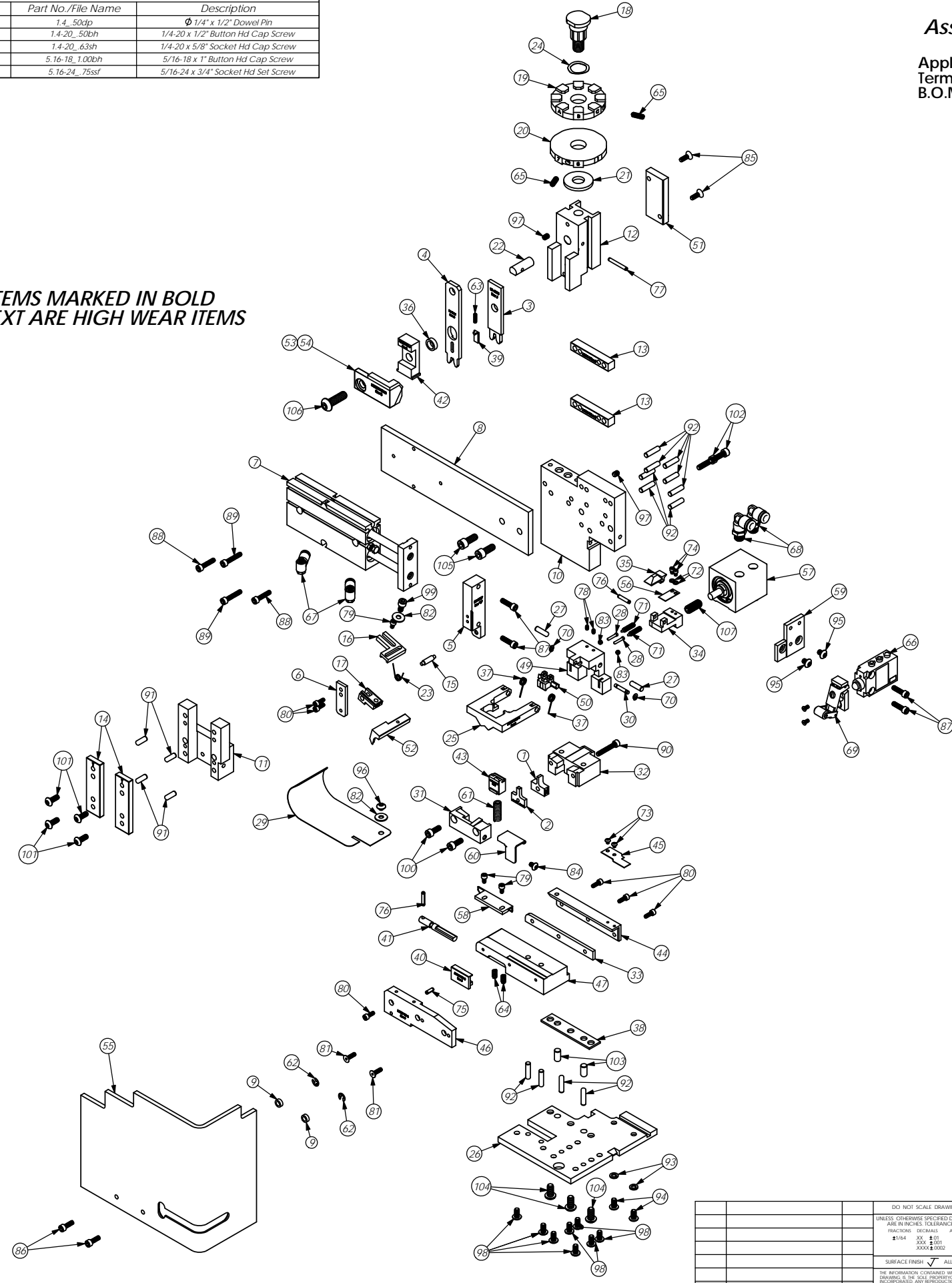
Assembly Drawing and Bill of Materials

Applicator Type: MX ITD Side - Air Feed
Terminal: PD260N (Ø.100-Ø.140 Insulation)
B.O.M. #: 79090

Section 5

NOTE:
(1) Items marked in bold text are high wear items.
(2) Use OEM replacement tooling only.
(3) Recommended machine speed for automatic equipment is a maximum of 3500 parts per hour.

NOTE: ITEMS MARKED IN BOLD TEXT ARE HIGH WEAR ITEMS



Parts List					Parts List				
Item	Part Code	QTY.	Part No./File Name	Description	Item	Part Code	QTY.	Part No./File Name	Description
1	76678	1	9-4004	Wire Anvil	103	63827	2	1.4_50dp	Ø 1/4" x 1/2" Dowel Pin
2	76679	1	9A-4004	Insulation Anvil	104	63632	3	1.4-20_50bh	1/4-20 x 1/2" Button Hd Cap Screw
3	76680	1	13-4004	Wire Rolling Tool	105	63492	2	1.4-20_63bh	1/4-20 x 5/8" Socket Hd Cap Screw
4	76659	1	14-4004	Insulation Rolling Tool	106	63055	1	5.16-18_1.00bh	5/16-18 x 1" Button Hd Cap Screw
5	77640	1	26-3087	Feed Finger Adapter	107	71086	1	5.16-24_75ssf	5/16-24 x 3/4" Socket Hd Set Screw
6	77641	1	26A-3087	Feed Finger Cover Plate					
7	77647	1	35-3087	Twin Rod Cylinder					
8	77619	1	35A-3087	Air Cylinder Support Bracket					
9	73888	2	GS-125	Guard Spacer					
10	71029	1	MX2A-S	Mounting Frame					
11	71030	1	MX2B-S	Plunger Frame					
12	74343	1	MX3	Ram					
13	74351	2	MX10-S	Rack Pad					
14	74352	2	MX11	Gib					
15	74356	1	MX12	Feed Finger Pivot Pin					
16	76868	1	MX14-1-S	Feed Finger Arm					
17	76874	1	MX15-1-S	Feed Finger Guide					
18	74407	1	MX33	Mounting Post					
19	70659	1	MX34-B	Wire Crimp Dial					
20	74409	1	MX35	Insulation Dial					
21	74411	1	MX36	Dial Spacer					
22	74412	1	MX44	Locating Dowel					
23	74415	1	MX45-S	Feed Finger Spring					
24	72310	1	MX104	Wave Disc Spring					
25	76946	1	MX301-3-ITD-S	Latching Gate					
26	72261	1	MX302-1-ITD-S	Base Plate					
27	76563	2	MX304-ITD-S	Hinge Pin					
28	76564	2	MX305-ITD-S	Pin					
29	76566	1	MX307-ITD-S	Stock Chute					
30	76567	1	MX308-ITD-S	Latch Pivot Pin					
31	78936	1	MX309-4-ITD-S	Cut-off Keeper					
32	72257	1	MX310-1-ITD-S	Die Holder					
33	76570	1	MX311-ITD-S	Left Feed Shim (1/4")					
34	72259	1	MX313-1-ITD-S	Insulation Pusher for 1/4" Terminal					
35	76573	1	MX314-ITD-S	Catch					
36	76574	1	MX315-ITD-S	Insulation Tool Spacer					
37	76575	2	MX316-ITD-S	Latch Spring					
38	76576	1	MX317-ITD-S	Base Plate Spacer					
39	76578	1	MX319-ITD-S	Knock off					
40	76579	1	MX320-ITD-S	Brake					
41	76580	1	MX321-ITD-S	Brake Actuator					
42	76583	1	MX324-ITD-S	Cut-off Pad Pusher					
43	78935	1	MX326-4-ITD-S	Cut-off Pad					
44	76586	1	MX327-ITD-S	Left Feed Rail					
45	76587	1	MX328-ITD-S	Hold Down Spring					
46	76588	1	MX329-ITD-S	Right Feed Rail					
47	76589	1	MX330-ITD-S	Feed Plate					
48	76590	1	MX331-ITD-S	Latch (Automatic)					
49	76591	1	MX332-ITD-S	Support					
50	76592	1	MX333-ITD-S	Latch (1/4" Wire Stop)					
51	76608	1	MX335-ITD-S	Cam					
52	71686	1	MX337-2-ITD-S	Feed Finger					
53	70720	1	MX338-ITD-S	Arm Switch Cam (1 5/8" Stroke)					
54	72233	1	MX338-1-ITD-S	Arm Switch Cam (1 1/8" Stroke)					
55	70745	1	MX339-ITD-S	Guard					
56	72260	1	MX344-1-ITD-S	Leaf Spring					
57	72099	1	MX348-ITD-S	550 Strike Slide Cylinder					
58	72893	1	MX357-ITD-S	Bracket					
59	78733	1	MX358-1-ITD-S	Valve Mounting Plate					
60	78835	1	MX360-ITD-S	Scrap Retainer					
61	72350	1	5-047x1.000	Compression Spring					
62	75083	2	Irving 3100-18	External Retaining Ring					
63	72315	1	LC-022A-4	Compression Spring					
64	78681	2	LC-029B-3-M	Compression Spring					
65	70739	2	McMaster-Carr #3126A53	Spring Plunger					
66	78717	1	Parker #PXXM601A110	3-Way Valve					
67	75691	2	Pisco PH156-U10U	5/32" x 10-32 Banjo Fitting					
68	72352	2	Pisco PL250-N1U	Ø1/4" x 1/8" NPT Elbow Fitting, White					
69	78716	1	Telemecanique #XCM-Z24	Roller Switch					
70	63200	2	Truarc #5555-12	Retaining Ring					
71	63201	2	Vlier #PH-51-P	Spring Plunger					
72	63202	2	4lw	#4 Lock Washer					
73	63203	2	4-40_13bh	#4-40 x 1/8" Button Hd Cap Screw					
74	63204	2	4-40_16sh	#4-40 x 5/32" Socket Hd Cap Screw					
75	63205	1	1.8_38rp	Ø 1/8" x 3/8" Roll Pin					
76	63053	2	1.8_63rp	1/8" x 5/8" Roll Pin					
77	62040	1	1.8_100rp	1/8" x 1" Roll Pin					
78	63206	2	5-40_19ssf	#5-40 x 3/16" Socket Set Screw					
79	63207	3	6-32_25sh	#6-32 x 1/4" Socket Hd Cap Screw					
80	63209	6	6-32_38sh	#6-32 x 3/8" Socket Hd Cap Screw					
81	63057	2	6-32_50fh	#6-32 x 1/2" Flat Hd Cap Screw					
82	63210	2	8fw	#8 Flatwasher					
83	63211	2	8-32_13ssf	#8-32 x 1/8" Socket Hd Set Screw					
84	63212	1	8-32_25bh	#8-32 x 1/4" Button Hd Cap Screw					
85	63052	2	8-32_50fh	#8-32 x 1/2" Flat Hd Cap Screw					
86	63164	2	8-32_50sh	#8-32 x 1/2" Socket Hd Cap Screw					
87	63162	4	8-32_63sh	#8-32 x 5/8" Socket Hd Cap Screw					
88	63787	2	8-32_75sh	#8-32 x 3/4" Socket Hd Cap Screw					
89	63949	2	8-32_88sh	#8-32 x 7/8" Socket Hd Cap Screw					
90	63213	1	8-32_1.00sh	#8-32 x 1" Socket Hd Cap Screw					
91	63158	4	3.16_50dp	Ø 3/16" x 1/2" Dowel Pin					
92	63470	12	3.16_75dp	Ø 3/16" x 3/4" Dowel Pin					
93	78517	2	10lw	#10 Lockwasher					
94	63531	2	10-24_38bh	#10-24 x 3/8" Button Hd Cap Screw					
95	78687	2	10-32_25bh	#10-32 x 1/4" Button Hd Cap Screw					
96	78327	1	10-32_13bh	#10-32 x 1/8" Button Hd Cap Screw					
97	63054	2	10-32_25sf	#10-32 x 1/4" Socket Hd Set Screw					
98	78993	8	10-32_38bh	#10-32 x 3/8" Button Hd Cap Screw					
99	70110	1	10-32_38sh	#10-32 x 3/8" Socket Hd Cap Screw					
100	63056	2	10-32_50sh	#10-32 x 1/2" Socket Hd Cap Screw					
101	76501	4	10-32_50bh	#10-32 x 1/2" Button Hd Cap Screw					
102	63532	2	10-32_75sh	#10-32 x 3/4" Socket Hd Cap Screw					

DO NOT SCALE DRAWING	UNLESS OTHERWISE SPECIFIED DIMENSIONS ARE IN INCHES. DECIMALS ARE FRACTIONS. ANGLES ARE IN DEGREES.	1/16" XX 1/32" XXX 1/64" XXXX 1/8" XXXXX	SURFACE FINISH: ALL OVER	QTY	USED ON	SCALE	CAD FILE	DATE	DRAWN BY	DATE
						1:2.5			JT	10Oct04

ITEM NO.	PART NO.	DESCRIPTION	MATERIAL SPECIFICATION	QTY.	REVISION

See Parts List
ETCO ENGINEERED PRODUCTS
25 BELLEWS STREET
WARWICK, RI 02886 (401) 467-2400
MX ITD Side Feed Applicator
PD260N (Ø.100-Ø.140 Insulation) AF - Obsolite