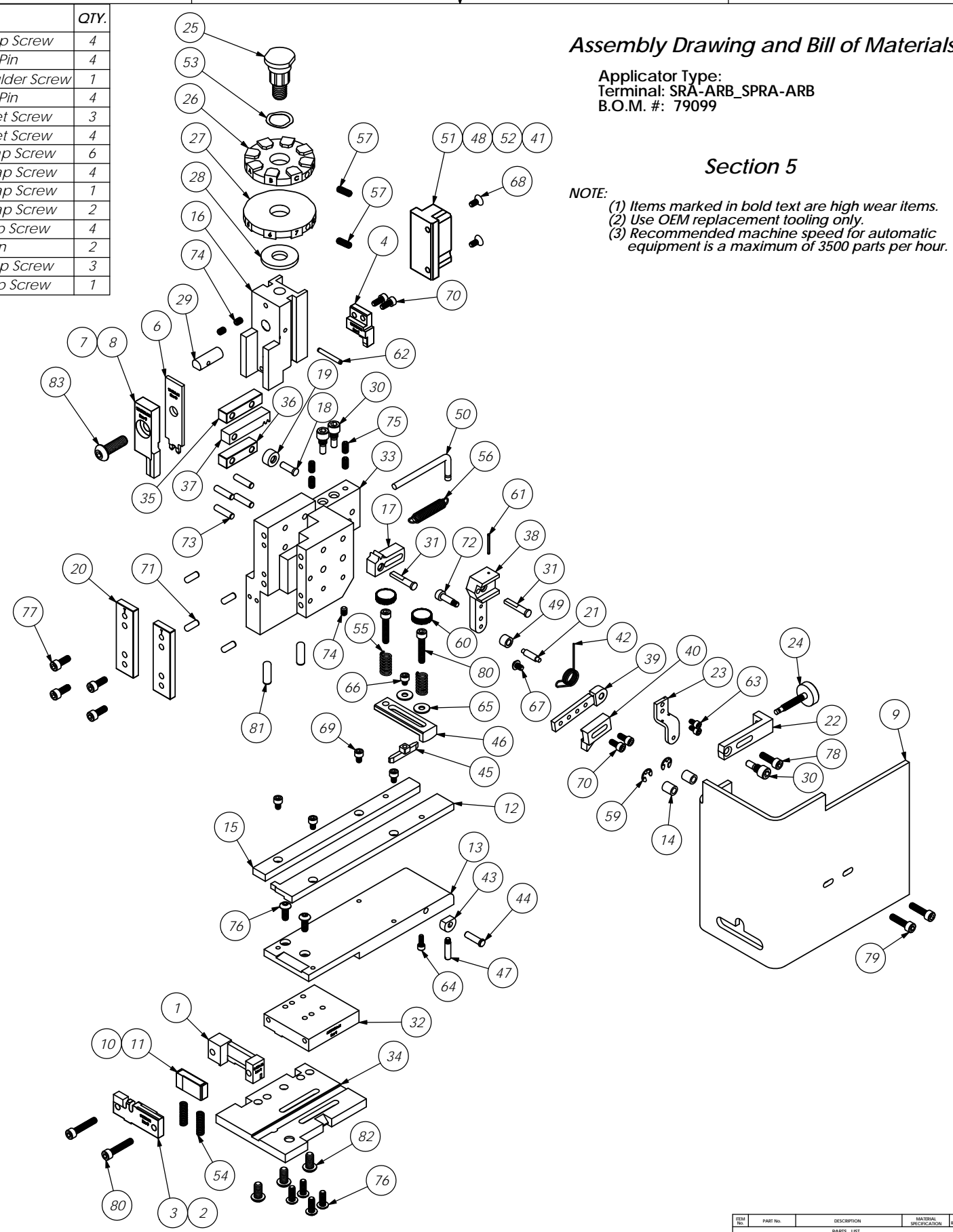


ITEM NO.	Part Code	PART NUMBER	DESCRIPTION	QTY.	ITEM NO.	Part Code	PART NUMBER	DESCRIPTION	QTY.
1	60273	8-SRA-M	Plunger Holder	1	70	63161	8-32_.38sh	#8-32 x 3/8" Socket Hd Cap Screw	4
2	<b>60195</b>	<b>9-SPRA-M</b>	<b>Anvil</b>	<b>1</b>	71	63158	3.16_.50dp	Ø 3/16" x 1/2" Dowel Pin	4
3	<b>60274</b>	<b>9-SRA-M</b>	<b>Anvil*</b>	<b>1</b>	72		3.16_.50shss	Ø3/16" x 1/2" Socket Hd Shoulder Screw	1
4	<b>60275</b>	<b>12-SRA-M</b>	<b>Cut-off Punch</b>	<b>1</b>	73	63470	3.16_.75dp	Ø 3/16" x 3/4" Dowel Pin	4
5	<b>60197</b>	<b>12-SPRA-M</b>	<b>Cut-off Punch</b>	<b>1</b>	74	63054	10-32_.25ss	#10-32 x 1/4" Socket Hd Set Screw	3
6	<b>60272</b>	<b>13-SRA-M</b>	<b>Wire Rolling Tool*(SRA)</b>	<b>1</b>	75		10-32_.38ssf	#10-32 x 3/8" Socket Hd Set Screw	4
7	60276	15-SRA-M	Feed Set	1	76	76501	10-32_.50bh	#10-32 x 1/2" Button Hd Cap Screw	6
8	60198	15-SPRA-M	Feed Set	1	77	63056	10-32_.50sh	#10-32 x 1/2" Socket Hd Cap Screw	4
9	78569	199-3001G-1	Guard	1	78	70293	10-32_.63sh	#10-32 x 5/8" Socket Hd Cap Screw	1
10	60307	346-SRA-M	Plunger	1	79	63532	10-32_.75sh	#10-32 x 3/4" Socket Hd Cap Screw	2
11	60218	346-SPRA-M	Plunger	1	80	63155	10-32_1.00sh	#10-32 x 1" Socket Hd Cap Screw	4
12	62048	FG-SRA-M	Front Guide	1	81		1.4_.75dp	1/4" x 3/4" Dowel Pin	2
13	60217	FP-SRA-M	Feed Plate	1	82	63632	1.4-20_.50bh	1/4-20 x 1/2" Button Hd Cap Screw	3
14	74491	GS-375	Guard Spacer	2	83	63055	5.16-18_1.00bh	5/16-18 x 1" Button Hd Cap Screw	1
15	60216	RG-SRA-M	Rear Guide	1					
16	74343	MX3	Ram	1					
17	74346	MX6	Gear Arm	1					
18	74347	MX7	Cam Pin	1					
19	74350	MX8	Cam Roller	1					
20	74352	MX11	Gib	2					
21	74356	MX12	Feed Finger Pivot Pin	1					
22	74360	MX13	Adjusting Bar	1					
23	74364	MX16	Retainer	1					
24	74376	MX25	Stroke Adjustment Screw	1					
25	74407	MX33	Mounting Post	1					
26	60188	MX34-SRA-M	Wire Crimp Dial	1					
27	74409	MX35	Insulation Dial	1					
28	74411	MX36	Dial Spacer	1					
29	74412	MX44	Locating Dowel	1					
30	74419	MX50	Safety Pivot Pin	3					
31	74420	MX52	Pivot Pin	2					
32	60788	MX54-SRA-M	Slide Support	1					
33	74909	MX58-R	Frame	1					
34	60208	MX59-SRA-M	Base Plate	1					
35	74912	MX69-R	Upper Rack Pad	1					
36	74913	MX70-R	Lower Rack Pad	1					
37	74914	MX71-R	Cam Rack	1					
38	72285	MX72-R-1	Swing Arm	1					
39	72287	MX73-R-1	Feed Arm	1					
40	60578	MX74-R-SRA-M	Feed Finger	1					
41	74915	MX75-R	Cam, 1 5/8" Downstroke	1					
42	72596	MX80-1-R	Feed Finger Spring	1					
43	74425	MX84-S	Brake Cam	1					
44	74426	MX85-S	Cam Pivot Pin	1					
45	60693	MX86-S-SRA-M	Brake Shoe	1					
46	75915	MX87-1-S	Lift Arm	1					
47	74430	MX88-S	Lever	1					
48	74521	MX89-R	Cam, 1 1/8" Upstroke	1					
49	72286	MX99-R-1	Spacer	1					
50	74917	MX100-R	Spring Bracket	1					
51	76682	MX101-R	Cam, 1 5/8" Upstroke	1					
52	72204	MX102-R	Cam (K Press Down Stroke)	1					
53	72310	MX104	Wave Disc Spring	1					
54	78606	LC-032C-9-M	Compression Spring	2					
55	75342	LC-045E-6-M	Brake Spring	2					
56	74611	LE-037CD-6	Extension Spring	1					
57	70739	McMaster-Carr #3126A53	Spring Plunger	2					
58	72519	McMaster Carr #98029A043	#8 Hardened Washer	1					
59	72069	McMaster Carr #98407A122	#10 E-Style Retaining Ring	2					
60	73785	SPI 99-602-5	#10 Black Knurled Knob	2					
61	62294	1.16_.75rp	1/16" x 3/4" Roll Pin	1					
62	62040	1.8_1.00rp	1/8" x 1" Roll Pin	1					
63	63207	6-32_.25sh	#6-32 x 1/4" Socket Hd Cap Screw	2					
64	63209	6-32_.38sh	#6-32 x 3/8" Socket Hd Cap Screw	1					
65	63210	8fw	#8 Flatwasher	1					
66	60265	8-32_.19sh	#8-32 x 3/16" Socket Hd Cap Screw	1					
67	63212	8-32_.25bh	#8-32 x 1/4" Button Hd Cap Screw	1					
68	63508	8-32_.38fh	#8-32 x 3/8" Flat Hd Cap Screw	2					
69	63163	8-32_.25sh	#8-32 x 1/4" Socket Hd Cap Screw	4					

**NOTE: ITEMS MARKED IN BOLD TEXT ARE HIGH WEAR ITEMS**



**Assembly Drawing and Bill of Materials**

Applicator Type:  
Terminal: SRA-ARB\_SPRA-ARB  
B.O.M. #: 79099

**Section 5**

**NOTE:**  
(1) Items marked in bold text are high wear items.  
(2) Use OEM replacement tooling only.  
(3) Recommended machine speed for automatic equipment is a maximum of 3500 parts per hour.

ITEM NO.	PART NO.	DESCRIPTION	MATERIAL SPECIFICATION	QTY.
DO NOT SCALE DRAWING				
UNLESS OTHERWISE SPECIFIED DIMENSIONS ARE IN INCHES. TOLERANCES ARE: FRACTIONS: DECIMALS ANGLES SURFACE FINISH: ALL OVER				
THE INFORMATION CONTAINED WITHIN THIS DRAWING IS THE SOLE PROPERTY OF ETICO. NO PART OF THIS DRAWING OR THE INFORMATION CONTAINED HEREIN IS TO BE REPRODUCED OR TRANSMITTED IN ANY FORM OR BY ANY MEANS, ELECTRONIC OR MECHANICAL, INCLUDING PHOTOCOPYING, RECORDING, OR BY ANY INFORMATION STORAGE AND RETRIEVAL SYSTEM, WITHOUT THE WRITTEN PERMISSION OF ETICO ENGINEERED PRODUCTS.				
MATERIAL: See Parts List		ETICO ENGINEERED PRODUCTS 25 BELLEW'S STREET WARWICK, RI 02886 (401) 467-2400		
PARTS LIST		<b>MX Rear Applicator</b>		
1 SRA-ARB/SPRA-ARB		REV: A		
QTY USED ON:		SRA-ARB_SPRA-ARB		
LVL REVISION		DATE: 4/10/02		
BY DATE:		DRAWN BY: JF		
APPLICATION		SCALE: 1:2		
CHECKED BY:		DATE:		
CAD FILE:		DATE:		