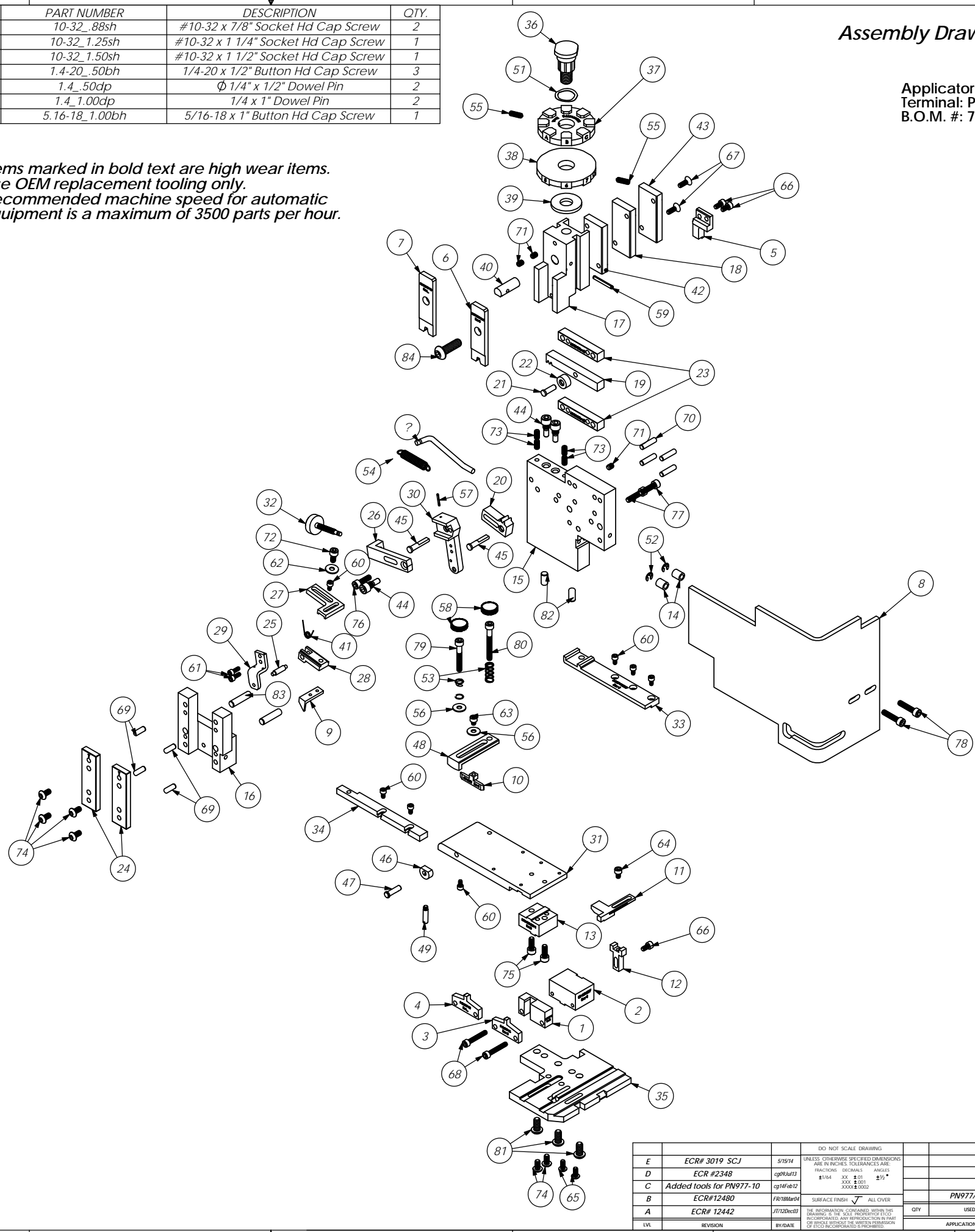


Assembly Drawing and Bill of Materials

Applicator Type: MX Side
Terminal: PN977/PN977-1/PN977-10
B.O.M. #: 79105

ITEM NO.	Part_Code	PART NUMBER	DESCRIPTION	QTY.	ITEM NO.	Part_Code	PART NUMBER	DESCRIPTION	QTY.
1	60774	8-PN977-M	Cut-off Die	1	78	70925	10-32_.88sh	#10-32 x 7/8" Socket Hd Cap Screw	2
2	60224	8S-C5M977	Die Holder (Single)	1	79	77396	10-32_1.25sh	#10-32 x 1 1/4" Socket Hd Cap Screw	1
3	60775	9-PN977-M	Anvil	1	80	63826	10-32_1.50sh	#10-32 x 1 1/2" Socket Hd Cap Screw	1
4	62808	9-PN977-10	Anvil	1	81	63632	1.4-20_.50bh	1/4-20 x 1/2" Button Hd Cap Screw	3
5	60776	12-PN977-M	Cut-off Punch	1	82	63827	1.4_.50dp	Φ 1/4" x 1/2" Dowel Pin	2
6	60833	13-PN977-M-1	Wire Rolling Tool	1	83	63510	1.4_1.00dp	1/4 x 1" Dowel Pin	2
7	62809	13-PN977-10	Wire Rolling Tool	1	84	63055	5.16-18_1.00bh	5/16-18 x 1" Button Hd Cap Screw	1
8	72271	199-3005-2	Guard	1					
9	75942	303-3021	Feed Finger	1					
10	72278	403-3062	Brake Shoe	1					
11	77583	1600A-PN977	Adjustable Stripper Block	1					
12	74803	1600B-3000	Adjustable Stripper Holder	1					
13	60233	DPH-C5M977-1	Die Plate Holder	1					
14	74491	GS-375	Guard Spacer	2					
15	71029	MX2A-S	Mounting Frame	1					
16	71030	MX2B-S	Plunger Frame	1					
17	74343	MX3	Ram	1					
18	74344	MX4-S	Cam (1 5/8" Up Stroke)	1					
19	74438	MX5-S	Cam Rack	1					
20	74346	MX6	Gear Arm	1					
21	74347	MX7	Cam Pin	1					
22	74350	MX8	Cam Roller	1					
23	74351	MX10-S	Rack Pad	2					
24	74352	MX11	Gib	2					
25	74356	MX12	Feed Finger Pivot Pin	1					
26	74360	MX13	Adjusting Bar	1					
27	74361	MX14-S	Feed Finger Arm	1					
28	74362	MX15-S	Feed Finger Guide	1					
29	78665	MX16-2	Retainer	1					
30	74371	MX18-S	Swing Arm	1					
31	75916	MX24-2-S	Feed Plate	1					
32	74376	MX25	Stroke Adjustment Screw	1					
33	60235	MX27-PN977	Rear Guide Rail	1					
34	74840	MX28-1-S	Front Guide Rail	1					
35	60234	MX31-S-PN977	Baseplate	1					
36	74407	MX33	Mounting Post	1					
37	60897	MX34-PN977-2	Wire Crimp Dial	1					
38	74409	MX35	Insulation Dial	1					
39	74411	MX36	Dial Spacer	1					
40	74412	MX44	Locating Dowel	1					
41	74415	MX45-S	Feed Finger Spring	1					
42	74416	MX47-S	Cam (1 5/8" Down stroke)	1					
43	74417	MX48-S	Cam (1 1/8" Up Stroke)	1					
44	74419	MX50	Safety Pivot Pin	3					
45	74420	MX52	Pivot Pin	2					
46	74425	MX84-S	Brake Cam	1					
47	74426	MX85-S	Cam Pivot Pin	1					
48	75915	MX87-1-S	Lift Arm	1					
49	74430	MX88-S	Lever	1					
50	71730	MX90-1-S	Spring Bracket	1					
51	72310	MX104	Wave Disc Spring	1					
52	75083	Irving 3100-18	External Retaining Ring	2					
53	77322	LC-045E-10-M	Spring	2					
54	74611	LE-037CD-6	Extension Spring	1					
55	70739	McMaster-Carr #3126A53	Spring Plunger	2					
56	72519	McMaster Carr #98029A043	#8 Hardened Washer	2					
57	74447	McMaster-Carr #98296A109	Expansion Pin (1/16 x 1/2")	1					
58	73785	SPI 99-602-5	#10 Black Knurled Knob	2					
59	62040	1.8_1.00rp	1/8" x 1" Roll Pin	1					
60	63207	6-32_.25sh	#6-32 x 1/4" Socket Hd Cap Screw	7					
61	63209	6-32_.38sh	#6-32 x 3/8" Socket Hd Cap Screw	2					
62	63210	8fw	#8 Flatwasher	1					
63	60265	8-32_.19sh	#8-32 x 3/16" Socket Hd Cap Screw	1					
64	63163	8-32_.25sh	#8-32 x 1/4" Socket Hd Cap Screw	1					
65	61472	8-32_.38bh	#8-32 x 3/8" Button Hd Cap Screw	2					
66		8-32_.31sh	#8-32 x 5/16" Socket Hd Cap Screw	3					
67	63052	8-32_.50fh	#8-32 x 1/2" Flat Hd Cap Screw	2					
68	63213	8-32_1.00sh	#8-32 x 1" Socket Hd Cap Screw	2					
69	63158	3.16_.50dp	Φ 3/16" x 1/2" Dowel Pin	4					
70	63470	3.16_.75dp	Φ 3/16" x 3/4" Dowel Pin	4					
71	63054	10-32_.25ss	#10-32 x 1/4" Socket Hd Set Screw	3					
72	70110	10-32_.38sh	#10-32 x 3/8" Socket Hd Cap Screw	1					
73	71626	10-32_.38ss	#10-32 x 3/8" Socket Hd Set Screw	4					
74	78993	10-32_.38bh	#10-32 x 3/8" Button Hd Cap Screw	6					
75	63056	10-32_.50sh	#10-32 x 1/2" Socket Hd Cap Screw	2					
76	70293	10-32_.63sh	#10-32 x 5/8" Socket Hd Cap Screw	1					
77	63532	10-32_.75sh	#10-32 x 3/4" Socket Hd Cap Screw	2					

NOTE:
 (1) Items marked in bold text are high wear items.
 (2) Use OEM replacement tooling only.
 (3) Recommended machine speed for automatic equipment is a maximum of 3500 parts per hour.



REV	PART No.	DESCRIPTION	MATERIAL SPECIFICATION	QTY	RECD
E	ECR# 3019 SCJ	5/15/14			
D	ECR #2348	cg9RA#13			
C	Added tools for PN977-10	cg14F#12			
B	ECR#12480	f/r18Mar04			
A	ECR# 12442	J/T12Dec03			
LVL	REVISION	BY/DATE			

REV	DATE	BY	CHKD	APP	DESCRIPTION
E					PN977-1/-10
D					
C					
B					
A					

REV	DATE	BY	CHKD	APP	DESCRIPTION
E					PN977
D					
C					
B					
A					

REV	DATE	BY	CHKD	APP	DESCRIPTION
E					PN977
D					
C					
B					
A					

REV	DATE	BY	CHKD	APP	DESCRIPTION
E					PN977
D					
C					
B					
A					