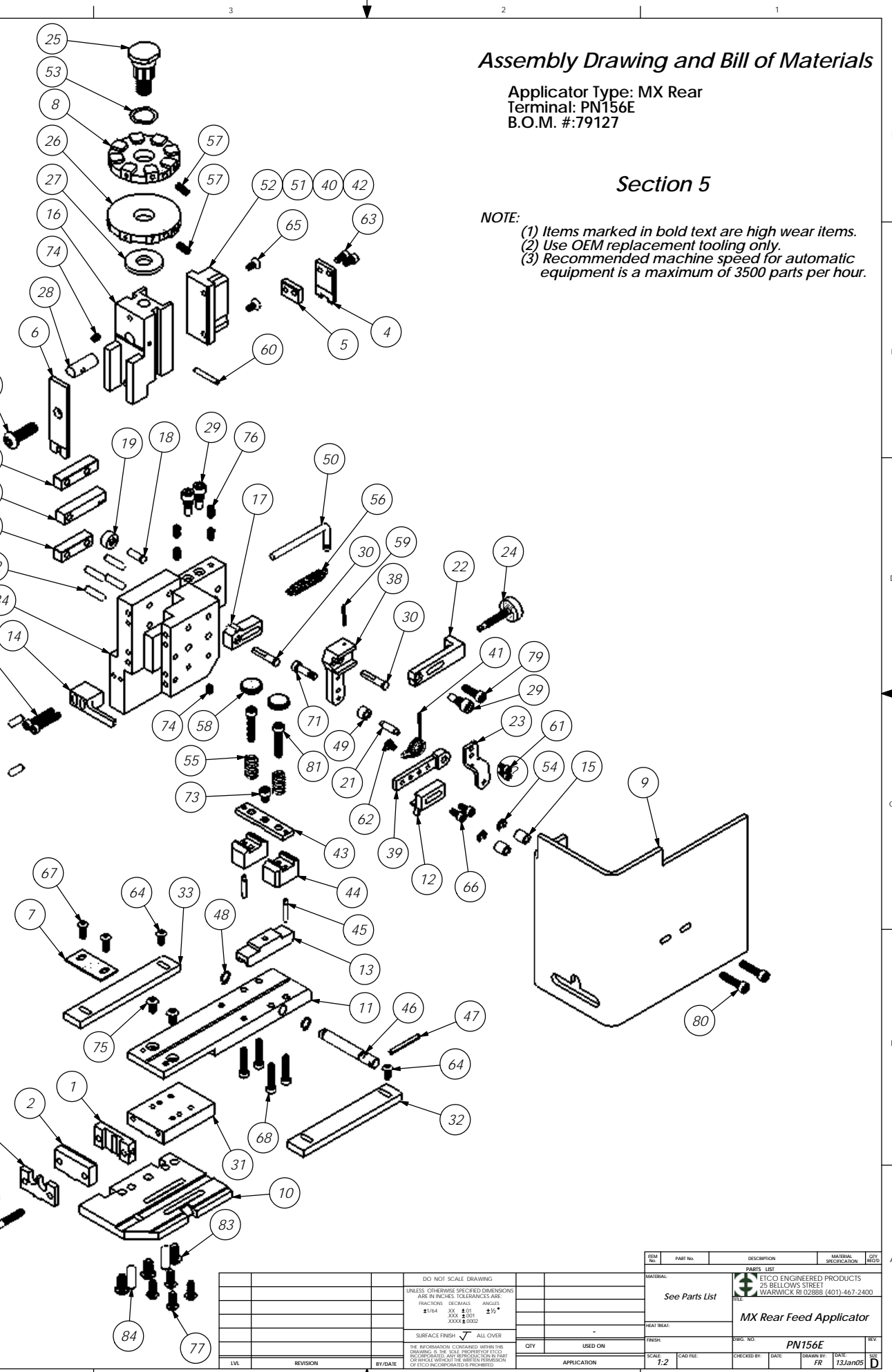


Item	Part Code	QTY.	Part No./File Name	Description	Item	Part Code	QTY.	Part No./File Name	Description
1	61263	1	8-3137	Rear Cut-off Die	70	63158	4	3.16_.50dp	Ø 3/16" x 1/2" Dowel Pin
2	61264	1	8A-3137	Front Cut-off Die	71	63194	1	3.16_10-32_.50 shs	3/16" x 1/2" x 10-32 Shoulder Screw
3	61267	1	9-3137	Wire Anvil	72	63470	4	3.16_.75dp	Ø 3/16" x 3/4" Dowel Pin
4	61268	1	12-3137	Cut-off Punch	73	63473	1	10-32_.25sh	#10-32 x 1/4" Socket Hd Cap Screw
5	61269	1	12A-3137	Cut-off Punch Spacer	74	63054	3	10-32_.25ss	#10-32 x 1/4" Socket Hd Set Screw
6	61272	1	13-3137	Wire Rolling Tool	75	78993	2	10-32_.38bh	#10-32 x 3/8" Button Hd Cap Screw
7	61358	1	26-3137	Hold-down	76	71626	4	10-32_.38ss	#10-32 x 3/8" Socket Hd Set Screw
8	61270	1	34-3137	Wire Crimp Dial	77	76501	4	10-32_.50bh	#10-32 x 1/2" Button Hd Cap Screw
9	78569	1	199-3001G-1	Guard	78	63056	4	10-32_.50sh	#10-32 x 1/2" Socket Hd Cap Screw
10	61262	1	200-3137	Baseplate	79	70293	1	10-32_.63sh	#10-32 x 5/8" Socket Hd Cap Screw
11	61233	1	250-3137	Feed Plate	80	70925	2	10-32_.88sh	#10-32 x 7/8" Socket Hd Cap Screw
12	61274	1	303-3137	Feed Finger	81	63155	2	10-32_1.00sh	#10-32 x 1" Socket Hd Cap Screw
13	61273	1	403-3137	Brake Shoe	82	77396	2	10-32_1.25sh	#10-32 x 1 1/4" Socket Hd Cap Screw
14	78921	1	1600A-3083	Stripper	83	63632	3	1.4-20_.50bh	1/4-20 x 1/2" Button Hd Cap Screw
15	74491	2	GS-375	Guard Spacer	84		2	1.4_.75dp	1/4" x 3/4" Dowel Pin
16	74343	1	MX3	Ram	85	63055	1	5.16-18_1.00bh	5/16-18 x 1" Button Hd Cap Screw
17	74346	1	MX6	Gear Arm					
18	74347	1	MX7	Cam Pin					
19	74350	1	MX8	Cam Roller					
20	74352	2	MX11	Gib					
21	74356	1	MX12	Feed Finger Pivot Pin					
22	74360	1	MX13	Adjusting Bar					
23	74364	1	MX16	Retainer					
24	74376	1	MX25	Stroke Adjustment Screw					
25	74407	1	MX33	Mounting Post					
26	74409	1	MX35	Insulation Dial					
27	74411	1	MX36	Dial Spacer					
28	74412	1	MX44	Locating Dowel					
29	74419	3	MX50	Safety Pivot Pin					
30	74420	2	MX52	Pivot Pin					
31	74908	1	MX54-R	Slide Support					
32	74817	1	MX56-R	Left Guide Rail					
33	74818	1	MX57-R	Right Guide Rail					
34	74909	1	MX58-R	Frame					
35	74912	1	MX69-R	Upper Rack Pad					
36	74913	1	MX70-R	Lower Rack Pad					
37	74914	1	MX71-R	Cam Rack					
38	72285	1	MX72-R-1	Swing Arm					
39	72287	1	MX73-R-1	Feed Arm					
40	74915	1	MX75-R	Cam, 1 5/8" Downstroke					
41	72596	1	MX80-1-R	Feed Finger Spring					
42	74521	1	MX89-R	Cam, 1 1/8" Upstroke					
43	74820	1	MX91-R	Lifter Plate					
44	74821	2	MX92-R	Brake Support					
45	74822	2	MX93-R	Lifter					
46	74823	1	MX94-R	Brake Shaft					
47	74825	1	MX96-R	Brake Handle					
48	74827	2	MX97-R	Retaining Ring					
49	72286	1	MX99-R-1	Spacer					
50	74917	1	MX100-R	Spring Bracket					
51	76682	1	MX101-R	Cam, 1 5/8" Upstroke					
52	72204	1	MX102-R	Cam (K Press Down Stroke)					
53	72310	1	MX104	Wave Disc Spring					
54	75083	2	Irving 3100-18	External Retaining Ring					
55	75342	2	LC-045E-6-M	Brake Spring					
56	74611	1	LE-037CD-6	Extension Spring					
57	70739	2	McMaster-Carr #3126A53	Spring Plunger					
58	73785	2	SPI 99-602-5	#10 Black Knurled Knob					
59	62294	1	1.16_.75rp	1/16" x 3/4" Roll Pin					
60	62040	1	1.8_1.00rp	1/8" x 1" Roll Pin					
61	63207	2	6-32_.25sh	#6-32 x 1/4" Socket Hd Cap Screw					
62	63212	1	8-32_.25bh	#8-32 x 1/4" Button Hd Cap Screw					
63		2	8-32_.31sh	#8-32 x 5/16" Socket Hd Cap Screw					
64	61472	2	8-32_.38bh	#8-32 x 3/8" Button Hd Cap Screw					
65	63508	2	8-32_.38fh	#8-32 x 3/8" Flat Hd Cap Screw					
66	63161	2	8-32_.38sh	#8-32 x 3/8" Socket Hd Cap Screw					
67		2	8-32_.50bh	#8-32 x 1/2" Button Hd Cap Screw					
68	63949	4	8-32_.88sh	#8-32 x 7/8" Socket Hd Cap Screw					
69	63213	2	8-32_1.00sh	#8-32 x 1" Socket Hd Cap Screw					



### Assembly Drawing and Bill of Materials

Applicator Type: MX Rear  
Terminal: PN156E  
B.O.M. #:79127

### Section 5

NOTE:  
(1) Items marked in bold text are high wear items.  
(2) Use OEM replacement tooling only.  
(3) Recommended machine speed for automatic equipment is a maximum of 3500 parts per hour.

REV	REVISION	DATE	BY	APP
1				

ITEM NO.	PART NO.	DESCRIPTION	MATERIAL SPECIFICATION	QTY. REQD.
See Parts List				

DO NOT SCALE DRAWING		UNLESS OTHERWISE SPECIFIED DIMENSIONS ARE IN INCHES. DECIMALS ARE FRACTIONS. DIMENSIONS ANGLES	
1/16"	XX	1/8"	XX
1/32"	XXX	3/16"	XXX
1/64"	XXXX	1/4"	XXXX
SURFACE FINISH: <input checked="" type="checkbox"/> ALL OVER		FINISH	
THE INFORMATION CONTAINED WITHIN THIS DRAWING IS THE SOLE PROPERTY OF ETICO. NO PART OF THIS DRAWING OR ANY INFORMATION HEREIN IS TO BE REPRODUCED OR TRANSMITTED IN ANY FORM OR BY ANY MEANS, ELECTRONIC OR MECHANICAL, WITHOUT THE WRITTEN PERMISSION OF ETICO ENGINEERED PRODUCTS.		QTY. USED ON	

ETICO ENGINEERED PRODUCTS 25 BELLEWIS STREET WARWICK, RI 02886 (401) 467-2400	
<b>MX Rear Feed Applicator</b>	
PN156E	REV. D
SCALE: T:2	CAD FILE: DATE: 13Jan05