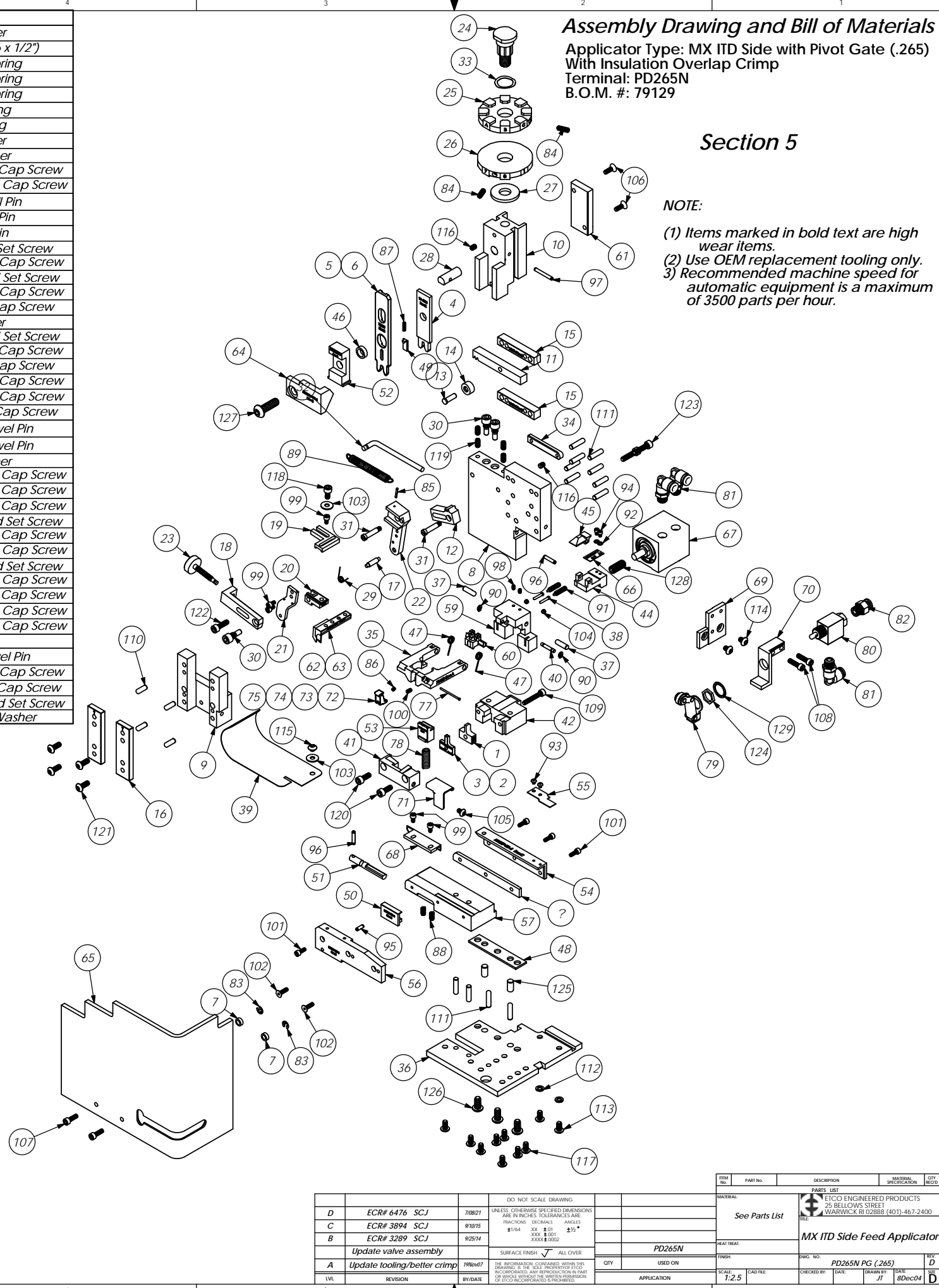


Item	Part Code	QTY.	Part No./File Name	Description
1	61929	1	9-4011	Wire Anvil
2	76651	1	9A-4001	Insulation Anvil Φ .070-.100
3	76679	1	9A-4004	Insulation Anvil
4	61928	1	13-4011	Wire Rolling Tool
5	76654	1	14-4003	Insulation Rolling Tool Φ .070-.100 (Overlap)
6	70875	1	14-4006	Ins. Rolling Tool
7	73888	2	GS-125	Guard Spacer
8	71494	1	MX2A-S-1	Mounting Frame
9	71030	1	MX2B-S	Plunger Frame
10	74343	1	MX3	Ram
11	74438	1	MX5-S	Cam Rack
12	74346	1	MX6	Gear Arm
13	74347	1	MX7	Cam Pin
14	74350	1	MX8	Cam Roller
15	74351	2	MX10-S	Rack Pad
16	74352	2	MX11	Gib
17	74356	1	MX12	Feed Finger Pivot Pin
18	74360	1	MX13	Adjusting Bar
19	76868	1	MX14-1-S	Feed Finger Arm
20	76874	1	MX15-1-S	Feed Finger Guide
21	74364	1	MX16	Retainer
22	71495	1	MX18-S-1	Swing Arm
23	74376	1	MX25	Stroke Adjustment Screw
24	74407	1	MX33	Mounting Post
25	72042	1	MX34-E	Wire Crimp Dial
26	74409	1	MX35	Insulation Dial
27	74411	1	MX36	Dial Spacer
28	74412	1	MX44	Locating Dowel
29	74415	1	MX45-S	Feed Finger Spring
30	74419	3	MX50	Safety Pivot Pin
31	71493	2	MX52-S-1	Pivot Pin
32	74614	1	MX90-S	Spring Bracket
33	72310	1	MX104	Wave Disc Spring
34	71678	1	MX105-S	Pivot Pin Plate
35	78450	1	MX301-12-ITD-S	Latch Gate (For .265 wide pivot gate)
36	72261	1	MX302-1-ITD-S	Base Plate
37	76563	2	MX304-ITD-S	Hinge Pin
38	76564	2	MX305-ITD-S	Pin
39	76566	1	MX307-ITD-S	Stock Chute
40	76567	1	MX308-ITD-S	Latch Pivot Pin
41	78936	1	MX309-4-ITD-S	Cut-off Keeper
42	72257	1	MX310-1-ITD-S	Die Holder
43	76570	1	MX311-ITD-S	Left Feed Shim (1/4")
44	72259	1	MX313-1-ITD-S	Insulation Pusher for 1/4" Terminal
45	76573	1	MX314-ITD-S	Catch
46	76574	1	MX315-ITD-S	Insulation Tool Spacer
47	76575	2	MX316-ITD-S	Latch Spring
48	76576	1	MX317-ITD-S	Base Plate Spacer
49	76578	1	MX319-ITD-S	Knock off
50	76579	1	MX320-ITD-S	Brake
51	76580	1	MX321-ITD-S	Brake Actuator
52	76583	1	MX324-ITD-S	Cut-off Pad Pusher
53	71014	1	MX326-8-ITD-S	Cut-off Pad
54	76586	1	MX327-ITD-S	Left Feed Rail
55	76587	1	MX328-ITD-S	Hold Down Spring
56	76588	1	MX329-ITD-S	Right Feed Rail
57	76589	1	MX330-ITD-S	Feed Plate
58	76590	1	MX331-ITD-S	Latch (Automatic)
59	76591	1	MX332-ITD-S	Support
60	76592	1	MX333-ITD-S	Latch (1/4" Wire Stop)
61	76608	1	MX335-ITD-S	Cam
62	76661	1	MX337-ITD-S	Feed Finger (fed between carrier and inslu ear)
63	71686	1	MX337-2-ITD-S	Feed Finger (fed in carrier strip hole)
64	72233	1	MX338-1-ITD-S	Arm Switch Cam
65	70745	1	MX339-ITD-S	Guard
66	72260	1	MX344-1-ITD-S	Leaf Spring
67	72099	1	MX348-ITD-S	.550 Strike Slide Cylinder
68	72893	1	MX357-ITD-S	Bracket
69	78733	1	MX358-1-ITD-S	Valve Mounting Plate
70	61993	1	MX358-2-ITD-S	Valve Mounting Plate
71	78835	1	MX360-ITD-S	Scrap Retainer
72	78488	1	MX361-9-ITD-S	Pivot Gate (Φ .070- Φ .100 Insulation)
73	78489	1	MX361-10-ITD-S	Pivot Gate (Φ .090- Φ .120 Insulation)
74	78490	1	MX361-11-ITD-S	Pivot Gate (Φ .110- Φ .140 Insulation)
75	78491	1	MX361-12-ITD-S	Pivot Gate (Φ .130- Φ .160 Insulation)
76	61484	1	MX361-16-ITD-S	Pivot Gate (Φ .050- Φ .070 Insulation)
77	71008	1	MX362-ITD-S	Pivot Gate Pin
78	72350	1	5-047x1.000	Compression Spring
79	72317	1	Clippard #12296	Cam Follower
80	72318	1	Clippard MJV-3	3-Way Valve
81	72352	3	Pisco PL250-N1U	Φ 1/4" x 1/8-NPT Elbow Fitting
82	73222	1	Pisco PC250-N1U	1/4" x 1/8" NPT Straight
83	72069	2	McMaster Carr #98407A118	#8 E-Style Retaining Ring

Item	Part Code	QTY.	Part No./File Name	Description
84	70739	2	McMaster-Carr #3126A53	Spring Plunger
85	74447	1	McMaster-Carr #98296A109	Expansion Pin (1/16 x 1/2")
86	71013	1	LC-014A-1-M	Compression Spring
87	72315	1	LC-022A-4	Compression Spring
88	78681	2	LC-029B-3-M	Compression Spring
89	74611	1	LE-037CD-6	Extension Spring
90	63200	2	Truarc #5555-12	Retaining Ring
91	63201	2	Vlier #PH-51-P	Spring Plunger
92	63202	2	4lw	#4 Lock Washer
93	63203	2	4-40_.13bh	#4-40 x 1/8" Button Hd Cap Screw
94	63204	2	4-40_.16sh	#4-40 x 5/32" Socket Hd Cap Screw
95	63205	1	1.8_.38rp	Φ 1/8" x 3/8" Roll Pin
96	63053	2	1.8_.63rp	1/8" x 5/8" Roll Pin
97	62040	1	1.8_1.00rp	1/8" x 1" Roll Pin
98	63206	2	5-40_.19ssf	#5-40 x 3/16" Socket Set Screw
99	63207	5	6-32_.25sh	#6-32 x 1/4" Socket Hd Cap Screw
100	63208	1	6-32_.25ssf	#6-32 x 1/4" Socket Hd Set Screw
101	63209	4	6-32_.38sh	#6-32 x 3/8" Socket Hd Cap Screw
102	63057	2	6-32_.50fh	#6-32 x 1/2" Flat Hd Cap Screw
103	63210	2	8fw	#8 Flatwasher
104	63211	2	8-32_.13ssf	#8-32 x 1/8" Socket Hd Set Screw
105	63212	1	8-32_.25bh	#8-32 x 1/4" Button Hd Cap Screw
106	63052	2	8-32_.50fh	#8-32 x 1/2" Flat Hd Cap Screw
107	63164	2	8-32_.50sh	#8-32 x 1/2" Socket Hd Cap Screw
108	63162	2	8-32_.63sh	#8-32 x 5/8" Socket Hd Cap Screw
109	63213	1	8-32_1.00sh	#8-32 x 1" Socket Hd Cap Screw
110	63158	4	3.16_.50dp	Φ 3/16" x 1/2" Dowel Pin
111	63470	12	3.16_.75dp	Φ 3/16" x 3/4" Dowel Pin
112	78517	2	10lw	#10 Lockwasher
113	63531	2	10-24_.38bh	#10-24 x 3/8" Button Hd Cap Screw
114	78687	2	10-32_.25bh	#10-32 x 1/4" Button Hd Cap Screw
115	78327	1	10-32_.13bh	#10-32 x 1/8" Button Hd Cap Screw
116	63054	2	10-32_.25ss	#10-32 x 1/4" Socket Hd Set Screw
117	78993	8	10-32_.38bh	#10-32 x 3/8" Button Hd Cap Screw
118	70110	1	10-32_.38sh	#10-32 x 3/8" Socket Hd Cap Screw
119		4	10-32_.38ssf	#10-32 x 3/8" Socket Hd Set Screw
120	63056	2	10-32_.50sh	#10-32 x 1/2" Socket Hd Cap Screw
121	76501	4	10-32_.50bh	#10-32 x 1/2" Button Hd Cap Screw
122	70293	1	10-32_.63sh	#10-32 x 5/8" Socket Hd Cap Screw
123	63532	2	10-32_.75sh	#10-32 x 3/4" Socket Hd Cap Screw
124		1	15.32_32 hex nut	Hex Nut
125	63827	2	1.4_.50dp	Φ 1/4" x 1/2" Dowel Pin
126	63632	3	1.4-20_.50bh	1/4-20 x 1/2" Button Hd Cap Screw
127	63055	1	5.16-18_1.00bh	5/16-18 x 1" Button Hd Cap Screw
128	71086	1	5.16-24_.75ssf	5/16-24 x 3/4" Socket Hd Set Screw
129		1	1.2isw	1/2" Internal Star Washer

NOTE: ITEMS MARKED IN BOLD TEXT ARE HIGH WEAR ITEMS



Assembly Drawing and Bill of Materials
 Applicator Type: MX ITD Side with Pivot Gate (.265)
 With Insulation Overlap Crimp
 Terminal: PD265N
 B.O.M. #: 79129

Section 5

- NOTE:**
- (1) Items marked in bold text are high wear items.
 - (2) Use OEM replacement tooling only.
 - (3) Recommended machine speed for automatic equipment is a maximum of 3500 parts per hour.

REV	DATE	DESCRIPTION	MATERIAL SPECIFICATION	QTY
D	ECR# 6476	SCJ	7/8/21	
C	ECR# 3894	SCJ	9/10/15	
B	ECR# 3289	SCJ	9/25/14	
A	Update valve assembly			
	Update tooling/better crimp			

REV	DATE	DESCRIPTION	MATERIAL SPECIFICATION	QTY
D	ECR# 6476	SCJ	7/8/21	
C	ECR# 3894	SCJ	9/10/15	
B	ECR# 3289	SCJ	9/25/14	
A	Update valve assembly			
	Update tooling/better crimp			

REV	DATE	DESCRIPTION	MATERIAL SPECIFICATION	QTY
D	ECR# 6476	SCJ	7/8/21	
C	ECR# 3894	SCJ	9/10/15	
B	ECR# 3289	SCJ	9/25/14	
A	Update valve assembly			
	Update tooling/better crimp			