

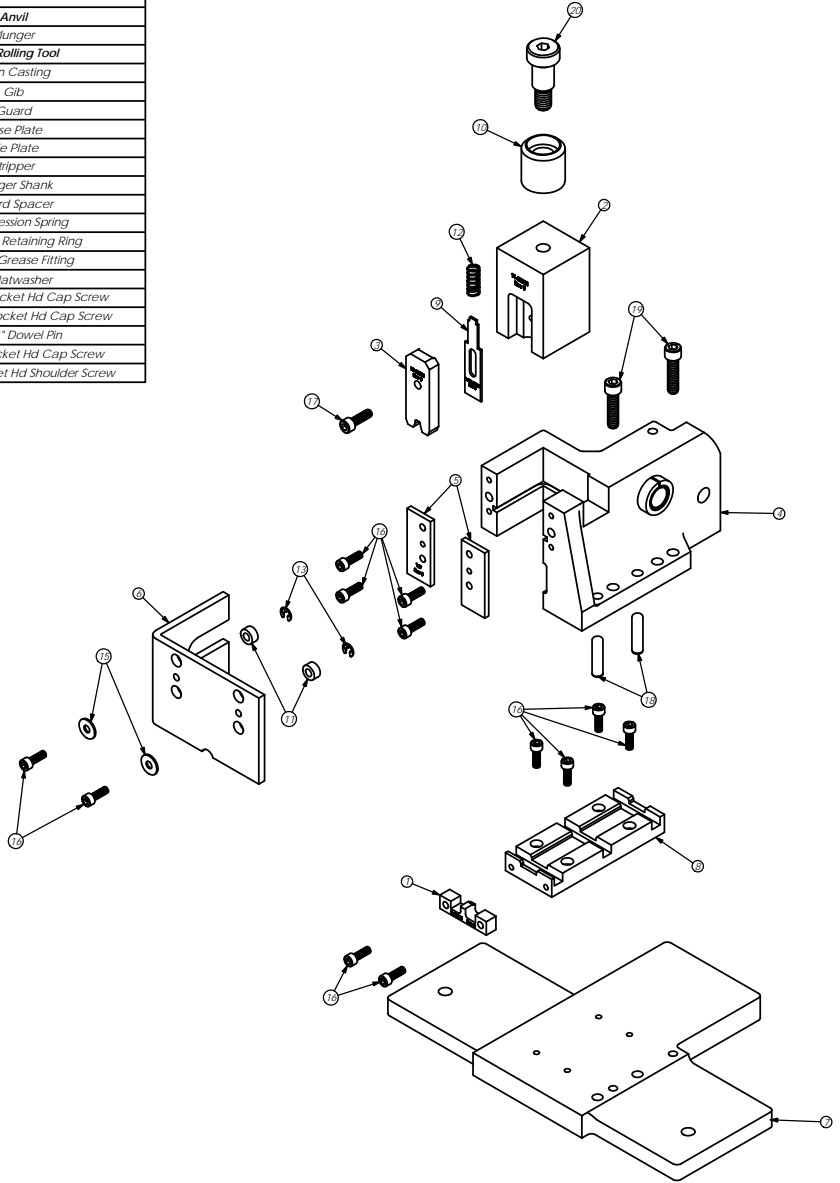
Item	Part Code	QTY.	Part No./File Name	Description
1	60042	1	9-82201	Anvil
2	61354	1	11-82201	Plunger
3	60043	1	13-82201	Wire Rolling Tool
4	63903	1	101-35	Main Casting
5	69859	2	169	Gib
6	61357	1	176-82201	Guard
7	73903	1	202	Base Plate
8	61355	1	250-82201	Die Plate
9	61356	1	1600-82201	Stripper
10	77634	1	CS-110	Plunger Shank
11	61360	2	GS-187	Guard Spacer
12		1	LC-032D-5-M	Compression Spring
13	72069	2	McMaster Carr #98407A118	#8 E-Style Retaining Ring
14	63506	1	McMaster-Carr #1095K11	1/8 NPT Grease Fitting
15	63210	2	#8w	#8 Flatwasher
16	63164	12	8-32_50sh	#8-32 x 1/2" Socket Hd Cap Screw
17	70293	1	10-32_63sh	#10-32 x 5/8" Socket Hd Cap Screw
18	63510	2	1.4_1.00dp	1/4 x 1" Dowel Pin
19	63168	2	1.4-20_1.00sh	1/4-20 x 1" Socket Hd Cap Screw
20	62622	1	1.2_75shs	1/2" x 3/4" Socket Hd Shoulder Screw

Assembly Drawing and Bill of Materials

Applicator Type: ECC Loose Piece
Terminal: INDGRDCT
B.O.M. #: 79131

Section 5

NOTE:
(1) Items marked in bold text are high wear items.
(2) Use OEM replacement tooling only.
(3) Recommended machine speed for automatic equipment is a maximum of 3500 parts per hour.



NOTE: ITEMS MARKED IN BOLD TEXT ARE HIGH WEAR ITEMS

REV	REVISION	BY	CHKD	DATE	DESCRIPTION	QTY	UNIT	APPLICATOR	QTY	UNIT
1				6/21/2012	INDGRDCT	1	EA	INDGRDCT	1	EA

INDGRDCT	INDGRDCT	INDGRDCT
INDGRDCT	INDGRDCT	INDGRDCT
INDGRDCT	INDGRDCT	INDGRDCT

See Parts List

INDGRDCT

82201

6/21/2012