

Item	Part Code	QTY.	Part No./File Name	Description	Item	Part Code	QTY.	Part No./File Name	Description
1	70700	1	8-3041-1	Rear Cut-off Die	70	63632	3	1.4-20_50bh	1/4-20 x 1/2" Button Hd Cap Screw
2	76642	1	8A-3041	Front Cut-off Die	71		2	1.4-20_63fh	1/4-20 x 5/8" Flat Hd Cap Screw
3	61373	1	9-3055-1	Wire Anvil	72	64215	2	1.4_75dp	1/4" x 3/4" Dowel Pin
4	70660	1	9A-3055	Insulation Anvil	73	63055	1	5.16-18_1.00bh	5/16-18 x 1" Button Hd Cap Screw
5	77535	1	12-3083	Cut-off Punch	74		1	M4x0.7_30.0sh	M4x0.7x30.0 Socket Hd. Cap Screw
6	77276	1	12A-3055	Cut-off Punch Spacer	75		1	M4x0.7hn	M4 x .7 Hex Nut
7	78714	1	12A-3096	Cut-off Punch Spacer					
8	61374	1	13-3055	Wire Rolling Tool					
9	77271	1	14-3055	Insulation rolling tool					
10	61375	1	14-3055-1	Overlap Insulation Rolling Tool					
11	70359	1	16-2000-187	Rolling Tool Spacer					
12	70661	1	26-3055	Hold-Down					
13	77640	1	26-3087	Feed Finger Adapter					
14	77641	1	26A-3087	Feed Finger Cover Plate					
15	70672	1	34-3055	Wire Crimp Dial					
16	77647	1	35-3087	Twin Rod Cylinder					
17	63289	1	35A-3147	Air Cylinder Support Bracket					
18	75285	1	199-3001	Guard					
19	76532	1	200-3036	Baseplate					
20	70663	1	303-3055	Feed Finger					
21	71128	1	307-87	Feed Finger Spring					
22	70664	1	403-3055	Brake Shoe					
23	62863	1	500-3055	Right Guide Rail					
24	62862	1	1000-3055	Left Guide Rail					
25	75287	1	1600-3011	Stripper					
26	74491	2	GS-375	Guard Spacer					
27	74343	1	MX3	Ram					
28	74352	2	MX11	Gib					
29	74356	1	MX12	Feed Finger Pivot Pin					
30	74407	1	MX33	Mounting Post					
31	74409	1	MX35	Insulation Dial					
32	74411	1	MX36	Dial Spacer					
33	74412	1	MX44	Locating Dowel					
34	74418	1	MX49	Tool Retainer					
35	74908	1	MX54-R	Slide Support					
36	74816	1	MX55-R	Feed Plate					
37	74909	1	MX58-R	Frame					
38	72287	1	MX73-R-1	Feed Arm					
39	74820	1	MX91-R	Lifter Plate					
40	74821	2	MX92-R	Brake Support					
41	74822	2	MX93-R	Lifter					
42	74823	1	MX94-R	Brake Shaft					
43	74825	1	MX96-R	Brake Handle					
44	74827	2	MX97-R	Retaining Ring					
45	72286	1	MX99-R-1	Spacer					
46	72310	1	MX104	Wave Disc Spring					
47	75083	2	Irving 3100-18	External Retaining Ring					
48	75342	2	LC-045E-6-M	Brake Spring					
49	70739	2	McMaster-Carr #3126A53	Spring Plunger					
50	75691	2	Pisco PH156-U10U	5/32" x 10-32 Banjo Fitting					
51	72408	1	Pisco JSU156	Ø5/32" In-line Flow Control					
52	73785	2	SPI 99-602-5	#10 Black Knurled Knob					
53	62040	1	1.8_1.00rp	1/8" x 1" Roll Pin					
54	63209	2	6-32_38sh	#6-32 x 3/8" Socket Hd Cap Screw					
55	61472	2	8-32_38bh	#8-32 x 3/8" Button Hd Cap Screw					
56		2	8-32_50bh	#8-32 x 1/2" Button Hd Cap Screw					
57	63161	2	8-32_38sh	#8-32 x 3/8" Socket Hd Cap Screw					
58	63164	2	8-32_50sh	#8-32 x 1/2" Socket Hd Cap Screw					
59	63787	2	8-32_75sh	#8-32 x 3/4" Socket Hd Cap Screw					
60	63949	8	8-32_88sh	#8-32 x 7/8" Socket Hd Cap Screw					
61	63213	2	8-32_1.00sh	#8-32 x 1" Socket Hd Cap Screw					
62	63158	4	3.16_50dp	Ø 3/16" x 1/2" Dowel Pin					
63	63473	1	10-32_25sh	#10-32 x 1/4" Socket Hd Cap Screw					
64	63054	2	10-32_25ss	#10-32 x 1/4" Socket Hd Set Screw					
65	78993	2	10-32_38bh	#10-32 x 3/8" Button Hd Cap Screw					
66	76501	8	10-32_50bh	#10-32 x 1/2" Button Hd Cap Screw					
67	70925	2	10-32_88sh	#10-32 x 7/8" Socket Hd Cap Screw					
68	63155	2	10-32_1.00sh	#10-32 x 1" Socket Hd Cap Screw					
69	77396	2	10-32_1.25sh	#10-32 x 1 1/4" Socket Hd Cap Screw					

Approved
For Tooling
2/01/05

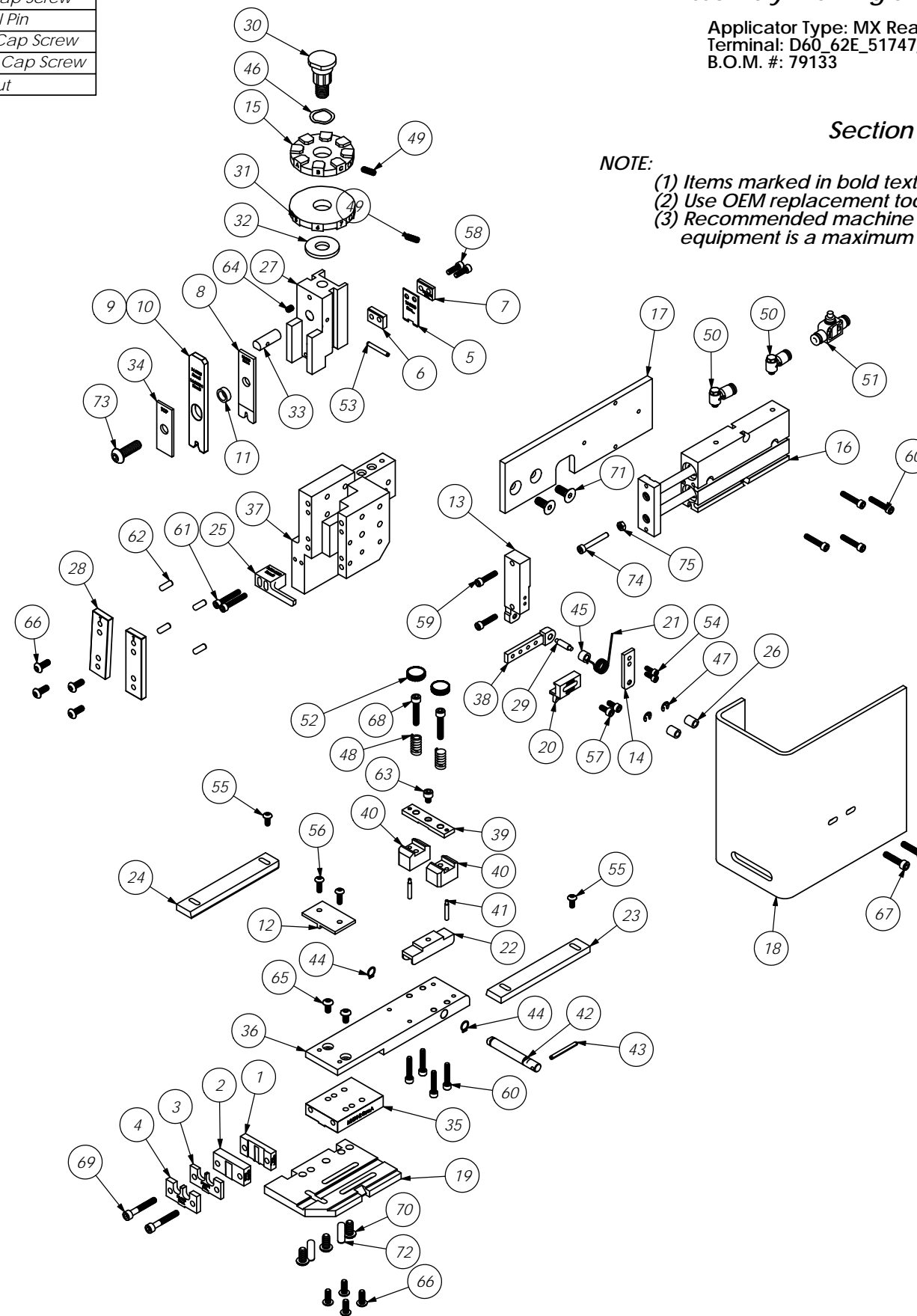
NOTE: ITEMS MARKED IN BOLD TEXT
ARE HIGH WEAR ITEMS

Assembly Drawing and Bill of Materials

Applicator Type: MX Rear
Terminal: D60_62E_51747_51769_52220
B.O.M. #: 79133

Section 5

NOTE:
 (1) Items marked in bold text are high wear items.
 (2) Use OEM replacement tooling only.
 (3) Recommended machine speed for automatic equipment is a maximum of 3500 parts per hour.



REV	DESCRIPTION	DATE	BY/DATE	APP. DATE	SCALE	APP. DATE	SCALE
E	ECR# 5026 SCJ	3/2/78					
D	ECR# 5019 SCJ	3/16/78					
C	ECR# 3174 SCJ	8/8/74					
B	ECR# 2212 SCJ	9/16/73					
A	ECR# 12850 CSG	07/04/99					

REV	DESCRIPTION	DATE	BY/DATE	APP. DATE	SCALE	APP. DATE	SCALE
E	ECR# 5026 SCJ	3/2/78					
D	ECR# 5019 SCJ	3/16/78					
C	ECR# 3174 SCJ	8/8/74					
B	ECR# 2212 SCJ	9/16/73					
A	ECR# 12850 CSG	07/04/99					

REV	DESCRIPTION	DATE	BY/DATE	APP. DATE	SCALE	APP. DATE	SCALE
E	ECR# 5026 SCJ	3/2/78					
D	ECR# 5019 SCJ	3/16/78					
C	ECR# 3174 SCJ	8/8/74					
B	ECR# 2212 SCJ	9/16/73					
A	ECR# 12850 CSG	07/04/99					

REV	DESCRIPTION	DATE	BY/DATE	APP. DATE	SCALE	APP. DATE	SCALE
E	ECR# 5026 SCJ	3/2/78					
D	ECR# 5019 SCJ	3/16/78					
C	ECR# 3174 SCJ	8/8/74					
B	ECR# 2212 SCJ	9/16/73					
A	ECR# 12850 CSG	07/04/99					