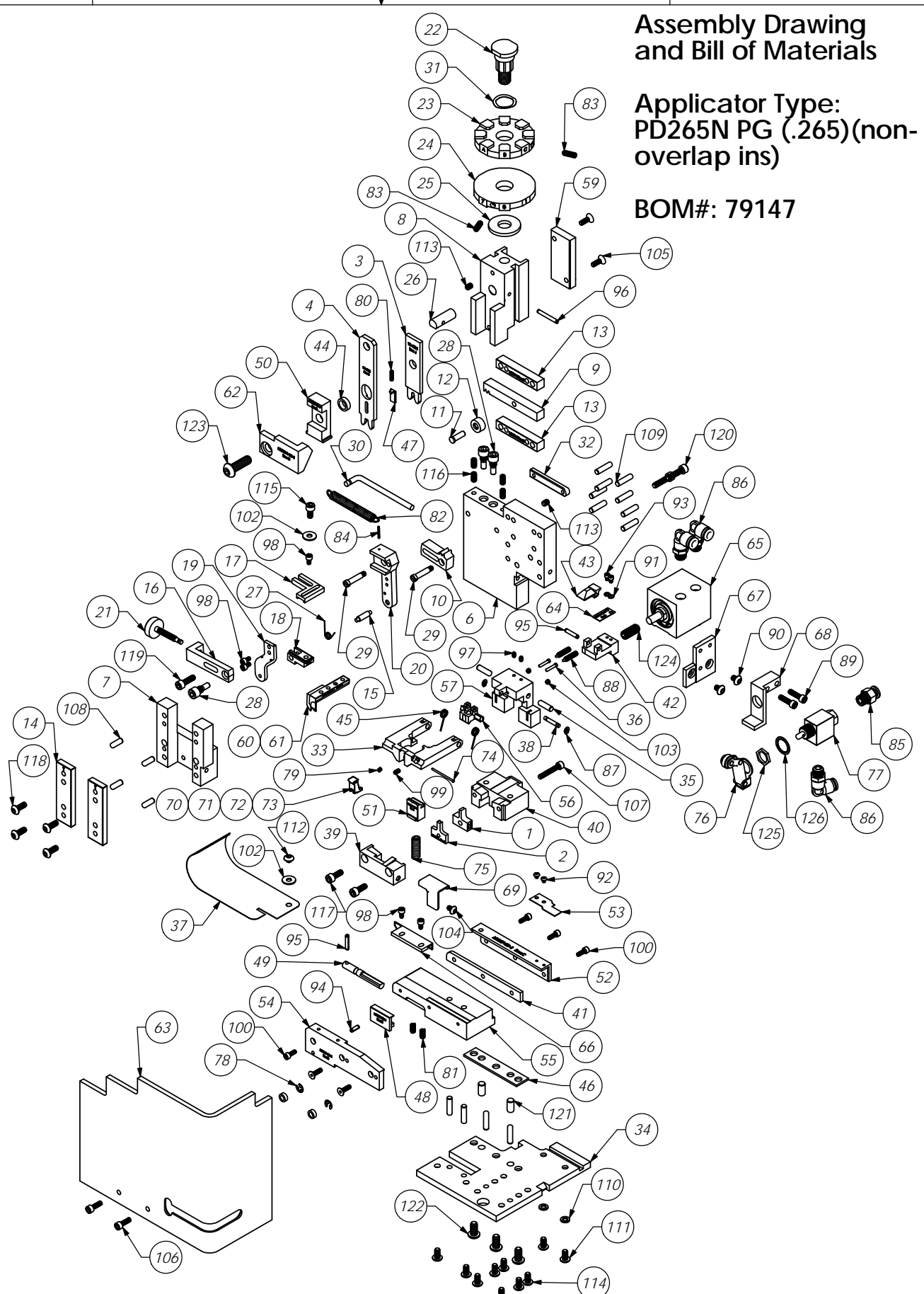


ITEM NO.	QTY.	Part_Code	PART NUMBER	DESCRIPTION	ITEM NO.	QTY.	Part_Code	PART NUMBER	DESCRIPTION
1	1	76678	9-4004	Wire Anvil	69	1	78835	MX360-ITD-S	Scrap Retainer
2	1	76679	9A-4004	Insulation Anvil	70	1	78488	MX361-9-ITD-S	Pivot Gate (Ø.070-Ø.100 Insulation)
3	1	76680	13-4004	Wire Rolling Tool	71	1	78489	MX361-10-ITD-S	Pivot Gate (Ø.090-Ø.120 Insulation)
4	1	76659	14-4004	Insulation Rolling Tool	72	1	78490	MX361-11-ITD-S	Pivot Gate (Ø.110-Ø.140 Insulation)
5	2	73888	GS-125	Guard Spacer	73	1	78491	MX361-12-ITD-S	Pivot Gate (Ø.130-Ø.160 Insulation)
6	1	71494	MX2A-S-1	Mounting Frame	74	1	71008	MX362-ITD-S	Pivot Gate Pin
7	1	71030	MX2B-S	Plunger Frame	75	1	72350	5-047x1.000	Compression Spring
8	1	74343	MX3	Ram	76	1	72317	Clippard #12296	Cam Follower
9	1	74438	MX5-S	Cam Rack	77	1	72318	Clippard MJV-3	3-Way Valve
10	1	74346	MX6	Gear Arm	78	2	75083	Irving 3100-18	External Retaining Ring
11	1	74347	MX7	Cam Pin	79	1	71013	LC-014A-1-M	Compression Spring
12	1	74350	MX8	Cam Roller	80	1	72315	LC-022A-4	Compression Spring
13	2	74351	MX10-S	Rack Pad	81	2	78681	LC-029B-3-M	Compression Spring
14	2	74352	MX11	Gib	82	1	74611	LE-037CD-6	Extension Spring
15	1	74356	MX12	Feed Finger Pivot Pin	83	2	70739	McMaster-Carr #3126A53	Spring Plunger
16	1	74360	MX13	Adjusting Bar	84	1	74447	McMaster-Carr #98296A109	Expansion Pin (1/16 x 1/2")
17	1	76868	MX14-1-S	Feed Finger Arm	85	1	73222	Pisco PC250-N1U	1/4" x 1/8" NPT Straight
18	1	76874	MX15-1-S	Feed Finger Guide	86	3	72352	Pisco PL250-N1U	Ø1/4" x 1/8-NPT Elbow Fitting
19	1	74364	MX16	Retainer	87	2	63200	Truarc #5555-12	Retaining Ring
20	1	71495	MX18-S-1	Swing Arm	88	2	63201	Vlier #PH-51-P	Spring Plunger
21	1	74376	MX25	Stroke Adjustment Screw	89	2	63162	8-32_63sh	#8-32 x 5/8" Socket Hd Cap Screw
22	1	74407	MX33	Mounting Post	90	2	78687	10-32_25bh	#10-32 x 1/4" Button Hd Cap Screw
23	1	72042	MX34-E	Wire Crimp Dial	91	2	63202	4lw	#4 Lock Washer
24	1	74409	MX35	Insulation Dial	92	2	63203	4-40_13bh	#4-40 x 1/8" Button Hd Cap Screw
25	1	74411	MX36	Dial Spacer	93	2	63204	4-40_16sh	#4-40 x 5/32" Socket Hd Cap Screw
26	1	74412	MX44	Locating Dowel	94	1	63205	1.8_38rp	Ø 1/8" x 3/8" Roll Pin
27	1	74415	MX45-S	Feed Finger Spring	95	2	63053	1.8_63rp	1/8" x 5/8" Roll Pin
28	3	74419	MX50	Safety Pivot Pin	96	1	62040	1.8_1.00rp	1/8" x 1" Roll Pin
29	2	71493	MX52-S-1	Pivot Pin	97	2	63206	5-40_19ssf	#5-40 x 3/16" Socket Set Screw
30	1	74614	MX90-S	Spring Bracket	98	5	63207	6-32_25sh	#6-32 x 1/4" Socket Hd Cap Screw
31	1	72310	MX104	Wave Disc Spring	99	1	63208	6-32_25ssf	#6-32 x 1/4" Socket Hd Set Screw
32	1	71678	MX105-S	Pivot Pin Plate	100	4	63209	6-32_38sh	#6-32 x 3/8" Socket Hd Cap Screw
33	1	78450	MX301-12-ITD-S	Latch Gate	101	2	63057	6-32_50fh	#6-32 x 1/2" Flat Hd Cap Screw
34	1	72261	MX302-1-ITD-S	Base Plate	102	2	63210	8fw	#8 Flatwasher
35	2	76563	MX304-ITD-S	Hinge Pin	103	2	63211	8-32_13ssf	#8-32 x 1/8" Socket Hd Set Screw
36	2	76564	MX305-ITD-S	Pin	104	1	63212	8-32_25bh	#8-32 x 1/4" Button Hd Cap Screw
37	1	76566	MX307-ITD-S	Stock Chute	105	2	63052	8-32_50fh	#8-32 x 1/2" Flat Hd Cap Screw
38	1	76567	MX308-ITD-S	Latch Pivot Pin	106	2	63164	8-32_50sh	#8-32 x 1/2" Socket Hd Cap Screw
39	1	78936	MX309-4-ITD-S	Cut-off Keeper	107	1	63213	8-32_1.00sh	#8-32 x 1" Socket Hd Cap Screw
40	1	72257	MX310-1-ITD-S	Die Holder	108	4	63158	3.16_50dp	Ø 3/16" x 1/2" Dowel Pin
41	1	76570	MX311-ITD-S	Left Feed Shim (1/4")	109	12	63470	3.16_75dp	Ø 3/16" x 3/4" Dowel Pin
42	1	72259	MX313-1-ITD-S	Insulation Pusher for 1/4" Terminal	110	2	78517	10lw	#10 Lockwasher
43	1	76573	MX314-ITD-S	Catch	111	2	63531	10-24_38bh	#10-24 x 3/8" Button Hd Cap Screw
44	1	76574	MX315-ITD-S	Insulation Tool Spacer	112	1	78327	10-32_13bh	#10-32 x 1/8" Button Hd Cap Screw
45	2	76575	MX316-ITD-S	Latch Spring	113	2	63054	10-32_25ss	#10-32 x 1/4" Socket Hd Set Screw
46	1	76576	MX317-ITD-S	Base Plate Spacer	114	8	78993	10-32_38bh	#10-32 x 3/8" Button Hd Cap Screw
47	1	76578	MX319-ITD-S	Knock off	115	1	70110	10-32_38sh	#10-32 x 3/8" Socket Hd Cap Screw
48	1	76579	MX320-ITD-S	Brake	116	4		10-32_38ssf	#10-32 x 3/8" Socket Hd Set Screw
49	1	76580	MX321-ITD-S	Brake Actuator	117	2	63056	10-32_50sh	#10-32 x 1/2" Socket Hd Cap Screw
50	1	76583	MX324-ITD-S	Cut-off Pad Pusher	118	4	76501	10-32_50bh	#10-32 x 1/2" Button Hd Cap Screw
51	1	71014	MX326-8-ITD-S	Cut-off Pad	119	1	70293	10-32_63sh	#10-32 x 5/8" Socket Hd Cap Screw
52	1	76586	MX327-ITD-S	Left Feed Rail	120	2	63532	10-32_75sh	#10-32 x 3/4" Socket Hd Cap Screw
53	1	76587	MX328-ITD-S	Hold Down Spring	121	2	63827	1.4_50dp	Ø 1/4" x 1/2" Dowel Pin
54	1	76588	MX329-ITD-S	Right Feed Rail	122	3	63632	1.4-20_50bh	1/4-20 x 1/2" Button Hd Cap Screw
55	1	76589	MX330-ITD-S	Feed Plate	123	1	63055	5.16-18_1.00bh	5/16-18 x 1" Button Hd Cap Screw
56	1	76590	MX331-ITD-S	Latch (Automatic)	124	1	71086	5.16-24_75ssf	5/16-24 x 3/4" Socket Hd Set Screw
57	1	76591	MX332-ITD-S	Support	125	1		15.32_32 hex nut	Hex Nut
58	1	76592	MX333-ITD-S	Latch (1/4" Wire Stop)	126	1		1.2isw	1/2" Internal Star Washer
59	1	76608	MX335-ITD-S	Cam					
60	1	76661	MX337-ITD-S	Feed Finger (fed between carrier and inslu ear)					
61	1	71686	MX337-2-ITD-S	Feed Finger (fed in carrier strip hole)					
62	1	72233	MX338-1-ITD-S	Arm Switch Cam (1 1/8" Stroke)					
63	1	70745	MX339-ITD-S	Guard					
64	1	72260	MX344-1-ITD-S	Leaf Spring					
65	1	72099	MX348-ITD-S	.550 Strike Slide Cylinder					
66	1	72893	MX357-ITD-S	Bracket					
67	1	78733	MX358-1-ITD-S	Valve Mounting Plate					
68	1	61993	MX358-2-ITD-S	Valve Mounting Plate					

Section 5

Note:
 1) Items marked in bold are high wear items.
 2) Use OEM replacement tooling only.
 3) Recommended machine speed for automatic equipment is a maximum of 3500 parts per hour.



Assembly Drawing and Bill of Materials

Applicator Type:
 PD265N PG (.265)(non-overlap ins)

BOM#: 79147

REV	DATE	DESCRIPTION	BY	CHKD	APP'D
B	ECR# 3894	SCJ	#14/05		
A	Updated 3-way valve ass'y	SCJ	#13/13		

DO NOT SCALE DRAWING	UNLESS OTHERWISE SPECIFIED DIMENSIONS ARE IN INCHES. TOLERANCES ARE FRACTIONS DECIMALS ANGLES
1/16" .001 .015"	XXX .001 .015"
XXXX .001 .015"	XXXX .001 .015"

MATERIAL: See Parts List	DATE: PD265N
SCALE: 1:1	REV: PD265N PG (.265)
CHECKED BY: CSJ	DATE: 02sept05