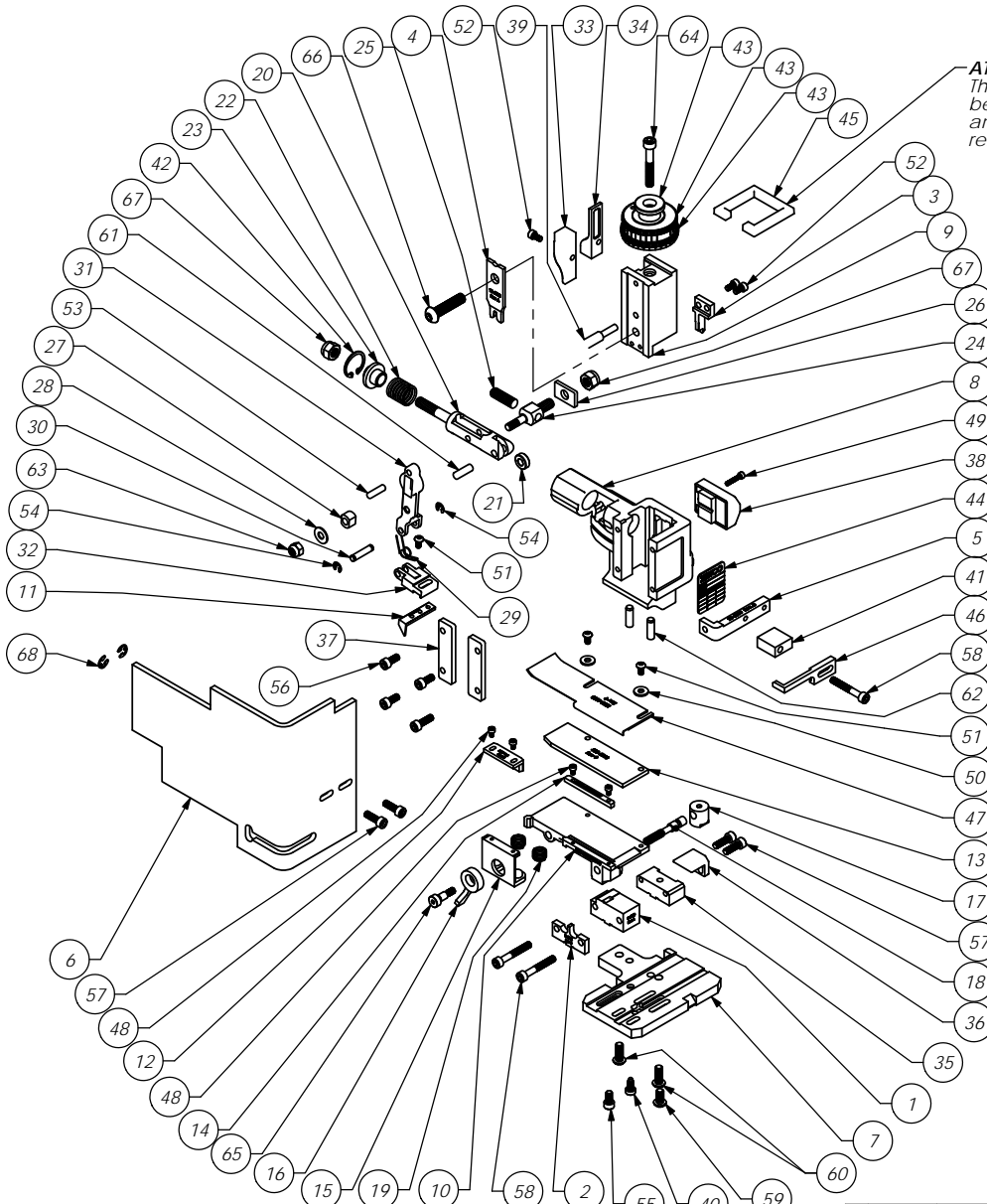


ITEM NO	Part Code	PART NUMBER	DESCRIPTION	QTY.
<b>1</b>	<b>61616</b>	<b>8-6003</b>	<b>Cut-off Die</b>	<b>1</b>
<b>2</b>	<b>61617</b>	<b>9-6003</b>	<b>Anvil</b>	<b>1</b>
<b>3</b>	<b>61618</b>	<b>12-6003</b>	<b>Cut-off Punch</b>	<b>1</b>
<b>4</b>	<b>61619</b>	<b>13-6003</b>	<b>Wire Rolling Tool</b>	<b>1</b>
5	61626	26-6000	Guard Bracket	1
6	76403	199-3005	Safety Guard	1
7	61634	200-6003	Base Plate	1
8	61542	MM1-S	Frame	1
9	61545	MM3-S	Plunger	1
10	61659	250-6003	Feed Plate	1
11	61664	303-6003	Feed Finger	1
12	62605	MM7-S-5	Brake Shoe	1
13	61660	500-6003	Rear Guide	1
14	61663	1000-6003	Front Guide	1
15	61736	MM7-S-1	Brake	1
16	61550	MM8-S	Brake Lever	1
17	61551	MM9-S	Adjustment Screw Retainer	1
18	61552	MM10-S	Adjustment Screw	1
19	61553	MM11-S	Brake Spring	2
20	61554	MM12	Adjustable Feed Piston	1
21	61555	MM13	Cam Roller	1
22	61556	MM14	Piston Spring	1
23	61557	MM15	Spring Plate	1
24	61558	MM16	Feed Adjustment Block	1
25	61559	MM17	Feed Adjustment Screw	1
26	61560	MM18	Retainer	1
27	61561	MM19	Guide Block	1
28	61562	MM20	Feed Washer	1
29	61563	MM21	Feed Finger Spring	1
30	61564	MM22	Feed Finger Shaft	1
31	61565	MM23	Feed Arm	1
32	61566	MM24	Feed Finger Retainer	1
33	61573	MM31	Post-feed Cam	1
34	61574	MM32	Pre-Feed Cam	1
35	61581	MM37-S	Tool Block	1
36	61582	MM38-S	Backup Block	1
37	61583	MM39	Gib	2
38	61585	MM43	Counter Ass'y.	1
39	61586	MM44	Locator Pin	1
40	61588	MM47	Dog Screw	1
41	61592	MM50-S	Stripper Spacer	1
42	61595	MM56	Retaining Ring	1
43	61596	MM57	Continuous Regulation Head Assembly	1
44	61598	MM59	ID Plate	1
45	61597	MM58	Protection Spacer	1
46	61661	1600-6003	Stripper	1
47	61657	1800-6003	Top Guide / Stock Chute	1
48		M3x0.5_5.0sh	M3 x 5mm Socket Hd Cap Screw	4
49		M3x0.5_16.0sh	M3 x 0.5 x 16mm Socket Hd Cap Screw	1
50		M4fw	M4 Flat Washer	2
51		M4x.7_8.0bh	M4 x .7 x 8mm Button Hd Cap Screw	3
52		M4x0.7_8.0sh	M4 x .7 x 8.0 Socket Hd Cap Screw	3
53		M5_18.0dp	M5 x 18mm Dowel Pin	1
54		M5_M3_9err	M5 External Retaining Ring	2
55	63521	M5x.8_10.0sh	M5 x .8 x 10mm Socket Hd Cap Screw	1
56		M5x.8_12.0sh	M5 x .8 x 12mm Socket Hd Cap Screw	3
57		M5x.8_16.0sh	M5 x .8 x 16mm Socket Hd Cap Screw	5
58		M5x.8_35.0sh	M5 x .08 x 35mm Socket Hd Cap Screw	3
59		M6x1.0_12.0bh	M6 x 1.0 x 12mm Button Hd Cap Screw	1
60		M6x1.0_16.0bh	M6 x 1.0 x 16mm Button Hd Cap Screw	2
61		M6_18dp	M6 x 18mm Dowel Pin	1
62		M6_20dp	M6 x 20mm Dowel Pin	2
63		M6_in	M6 Lock Nut	1
64		M6x1.0_40.0sh	M6 x 1.0 x 40mm Socket Hd Cap Screw	1
65		M6_10shss	M6 x 10mm Socket Hd Shoulder Screw	1
66	62092	M8 x 1.25_35.0bh	M8 x 1.25 x 35mm Button Hd Cap Screw	1
67		M8_in	M8 Lock Nut	2
68	72069	McMaster Carr #98407A122	#10 E-Style Retaining Ring	2

**NOTE:**  
ITEMS MARKED IN BOLD TEXT  
ARE HIGH WEAR ITEMS.

**R17, R19**  
**79153**



**ATTENTION:**  
The rubber protection  
between the plunger  
and the frame must be  
removed before use.

DO NOT SCALE DRAWING		UNLESS OTHERWISE SPECIFIED DIMENSIONS ARE IN INCHES TOLERANCES ARE:	
FRACTIONS	DECIMALS	ANGLES	
±1/64	±0.01	XXX ±0.01	±1/2°
		XXX ±0.01	±1/2°
SURFACE FINISH: $\sqrt{\quad}$ ALL OVER		REVISIONS	
Redrawn on new format SCJ 11/21/12		DATE	1
A General Revisions		QTY	USED ON
LVL		REVISION	BY/DATE
		APPLICATION	

ITEM NO.	PART NO.	DESCRIPTION	MATERIAL SPECIFICATION	QTY. REQD.
MATERIAL: See Parts List				
PARTS LIST: METCO ENGINEERED PRODUCTS 25 BELLOWS STREET WARRICK RI 02888 (401)-467-2400				
HEAT TREAT: Mighty Mini Side Feed				
FRSH:		DRG. NO.	REV. A	
		R17, R19		
SCALE: 1:3	CAD FILE:	CHECKED BY:	DATE:	DATE: 21Oct05
DRAWN BY: JT				