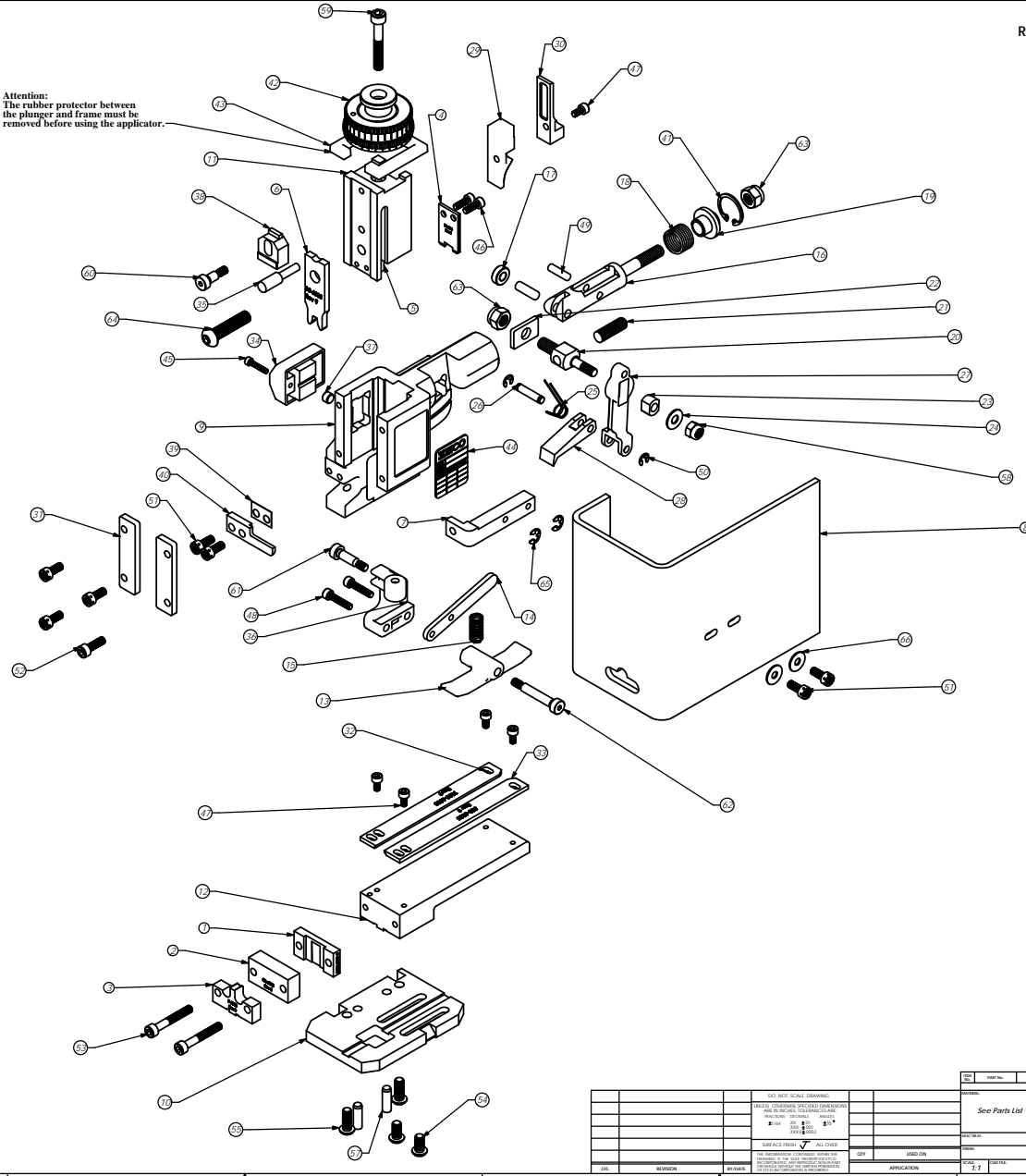


Parts List				
Item No	Part Code	Part No.	Description	Default/Qty
1	61678	8-6005	Rear Cut-Off Die	1
2	61679	8A-6005	Front Cut-Off Die	1
3	61682	9-6005	Anvil	1
4	61689	12-6005	Cut-off Punch	1
5	61683	12A-6005	Cut-off anvil	1
6	61681	13-6005	Wire Rolling Tool	1
7	61626	26-6000	Guard Bracket	1
8	61715	199-6001	Guard	1
9	61600	MM1-R	Frame	1
10	61601	MM2-R	Base Plate	1
11	61602	MM3-R	Plunger	1
12	61603	MM4-R	Feed Plate	1
13	61604	MM7-R	Brake	1
14	61605	MM8-R	Brake Lever	1
15	61633	MM11-R	Brake Spring	1
16	61554	MM12	Adjustable Feed Piston	1
17	61555	MM13	Cam Roller	1
18	61556	MM14	Piston Spring	1
19	61557	MM15	Spring Plate	1
20	61558	MM16	Feed Adjustment Block	1
21	61559	MM17	Feed Adjustment Screw	1
22	61560	MM18	Retainer	1
23	61561	MM19	Guide Block	1
24	61562	MM20	Feed Washer	1
25	61563	MM21	Feed Finger Spring	1
26	61564	MM22	Feed Finger Shaft	1
27	61565	MM23	Feed Arm	1
28	61606	MM25-R	Feed Finger	1
29	61573	MM31	Post Feed Cam	1
30	61574	MM32	Pre-Feed Cam	1
31	61582	MM39	CS	2
32	61685	1000-6005	Left Guide	1
33	61684	500-6005	Right Guide	1
34	61585	MM42	Counter Assy	1
35	61586	MM44	Locating Pin	1
36	61609	MM45-R	Brake Arm	1
37	61587	MM46	Counter Button	1
38	61590	MM48	RT Adjustment Block	1
39	61610	MM50-R	Stripper Spacer	1
40	61611	MM51-R	Stripper	1
41	61595	MM56	Retaining Ring	1
42	61596	MM57	Continuous Regulation Head Assembly	1
43	61597	MM58	Protection Spacer	1
44	61598	MM59	ID Plate	1
45	<i>M3x0.5-16.0dh</i>	M3 x 0.5 x 16mm Socket Hd Cap Screw	1	
46	<i>M4x0.7-12.0dh</i>	M4 x 0.7 x 12mm Socket Hd Cap Screw	2	
47	<i>M4x0.7-8.0dh</i>	M4 x 0.7 x 8.0mm Socket Hd Cap Screw	5	
48	<i>M4x0.7-20.0dh</i>	M4 x 0.7 x 20mm Socket Hd Cap Screw	2	
49	<i>M5-18.0dp</i>	M5 x 18mm Dowel Pin	1	
50	<i>M5-M2-Nbr</i>	M5 External Retaining Ring	2	
51	<i>M5-8-12.0dh</i>	M5 x 8 x 12mm Socket Hd Cap Screw	2	
52	<i>M5x 8-16.0dh</i>	M5 x 8 x 16mm Socket Hd Cap Screw	1	
53	<i>M5x 8-35.0dh</i>	M5 x 8 x 35mm Socket Hd Cap Screw	2	
54	<i>M6x1.0-12.0dh</i>	M6 x 1.0 x 12mm Button Hd Cap Screw	2	
55	<i>M6x1.0-16.0dh</i>	M6 x 1.0 x 16mm Button Hd Cap Screw	2	
56	<i>M6-18dp</i>	M6 x 18mm Dowel Pin	1	
57	<i>M6-20dp</i>	M6 x 20mm Dowel Pin	2	
58	<i>M6-In</i>	M6 Lock Nut	1	
59	<i>M6x1.0-40.0dh</i>	M6 x 1.0 x 40mm Socket Hd Cap Screw	1	
60	<i>M6-10shs</i>	M6 x 10mm Socket Hd Shoulder Screw	1	
61	<i>M6-16shs</i>	M6 x 16mm Socket Hd Shoulder Screw	1	
62	<i>M6-30shs</i>	M6 x 30mm Socket Hd Shoulder Screw	1	
63	<i>M8-In</i>	M8 Lock Nut	2	
64	62092	M8 x 1.25-35.0dh	M8 x 1.25 x 35mm Button Hd Cap Screw	1
65	72089	#10MS101021	#10 E-Style Retaining Ring	2
66		10W	#10 Flatwasher	2

Attention:  
The rubber protector between the plunger and frame must be removed before using the applicator.



R197EASSY  
79160

Note:  
Items marked in bold italic are high wear items.

REV	REVISION	BY	DATE	APP'D	DESCRIPTION

NO. OF SHEETS	DRWG. NO.	REV.

DATE	BY	APP'D
