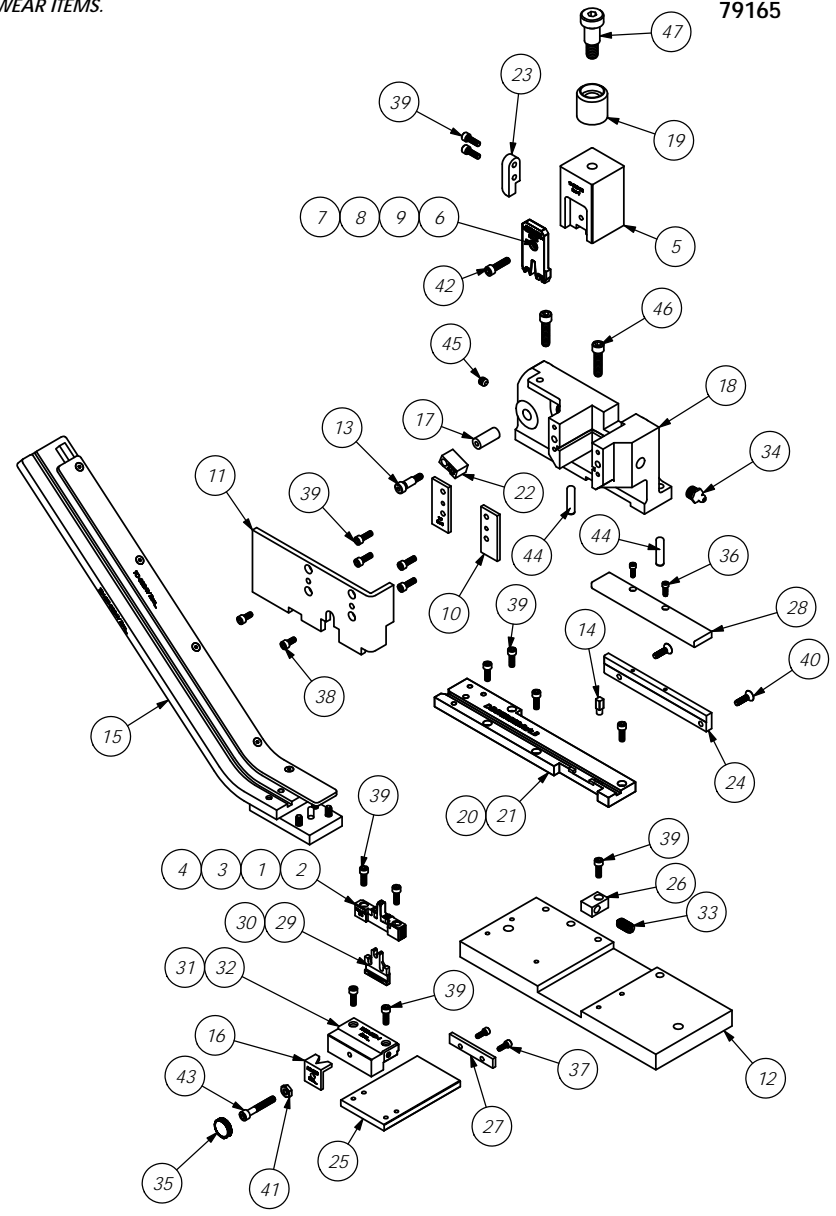


ITEM NO.	Part_Code	PART NUMBER	DESCRIPTION	QTY.
1	69904	9-BRIDGE	Anvil (14/16/18 AWG)	1
2	60162	9-BRIDGE-12	Anvil (12/14/16 AWG)	1
3	60709	9-GBBA-520-1	Anvil (18 AWG)	1
4	60711	9-GBBA-520-2	Anvil (14-16 AWG)	1
5	60251	11-BRIDGE	Plunger	1
6	60045	13-BRIDGE	Wire Rolling Tool (14/16/18 AWG)	1
7	64105	13-BRIDGE-12-1	Wire Rolling Tool (12/14/16 AWG)	1
8	60710	13-GBBA-520-1	Wire Rolling Tool (18 AWG)	1
9	60712	13-GBBA-520-2	Wire Rolling Tool (14-16 AWG)	1
10	69859	169	Gib	2
11	60785	176-BRD	Guard	1
12	61757	205-BRD	Base Plate	1
13	64002	301-GBBA	Shoulder Screw	1
14	60400	1651-G-AF	Locator Pin, Assembly Stop	1
15	64083	1800-GBBA	GBBA Extended Parts Magazine- "optional"	1
16	64079	BG-BRD	Bulb Guide	1
17	63892	BS-BRD	Brake Shaft	1
18	62956	CS-101-BRIDGE	Casting	1
19	77634	CS-110	Plunger Shank	1
20	64097	DP-BRD	Die Plate	1
21	63852	DP-BRD-520	Die Plate	1
22	60513	LFS-BRD	Left Feed Set	1
23	60310	RFS-BRD	Right Feed Set	1
24	63894	RG-BRD	Rear Guide	1
25	63721	SLIDE-BRD	Slide	1
26	62957	SSET-BRD	Slide Set	1
27	62958	SSSTOP-BRD	Slide Stop	1
28	63905	TG-BRD	Top Guide	1
29	63986	WG-BRD-1	Wire Guide	1
30	63851	WG-GBBA-520	Wire Guide	1
31	60412	WSR-BRD	Wire Separator Retainer	1
32	64080	WSR-BRD-1	Wire Separator Retainer	1
33	63921	Carr Lane #CL-51-SPS-2	Short Spring Plunger	1
34	63506	McMaster-Carr #1095K11	1/8 NPT Grease Fitting	1
35	73785	SPI 99-602-5	#10 Black Knurled Knob	1
36	63726	5-40_.38sh	#5-40 x 3/8" Socket Hd Cap Screw	2
37	63209	6-32_.38sh	#6-32 x 3/8" Socket Hd Cap Screw	2
38	63161	8-32_.38sh	#8-32 x 3/8" Socket Hd Cap Screw	2
39	63164	8-32_.50sh	#8-32 x 1/2" Socket Hd Cap Screw	15
40	76799	8-32_.63fh	#8-32 x 5/8 Flat Hd Cap Screw	2
41	63167	10-32 hn	#10-32 Hex Nut	1
42	63532	10-32_.75sh	#10-32 x 3/4" Socket Hd Cap Screw	1
43	77396	10-32_1.25sh	#10-32 x 1 1/4" Socket Hd Cap Screw	1
44	63510	1.4_1.00dp	1/4 x 1" Dowel Pin	2
45	63511	1.4-20_.25ssf	1/4-20 x 1/4" Socket Hd Set Screw	1
46	63168	1.4-20_1.00sh	1/4-20 x 1" Socket Hd Cap Screw	2
47	62622	1.2_.75shss	1/2" x 3/4" Socket Hd Shoulder Screw	1

NOTE:
ITEMS MARKED IN BOLD TEXT
ARE HIGH WEAR ITEMS.



GBBA-ECC
79165

REV	DESCRIPTION	DATE	BY
G	ECR# 2705 SCJ	12/19/12	
F	ECR# 2610 SCJ	10/23/12	
F	ECR# 2569 SCJ	10/15/12	
D	ECR# 2412 SCJ	8/13/12	
C	ECR #2398	30Jul12	
B	Added -12 tooling	12/11/12	
A	Added BOM/Part codes CSG	2/22/08	
LVL	REVISION	BY/DATE	

ITEM NO.	PART No.	DESCRIPTION	MATERIAL SPECIFICATION	QTY	REGR
See Parts List		PARTS LIST ETCO ENGINEERED PRODUCTS 25 BELLOWS STREET WARWICK RI 02888 (401)-467-2400			
HEAT TREAT		-			
FINISH		-			
DRG. NO.		GBBA-ECC			
SCALE		1:3			
CHECKED BY		JF			
DATE		11/21/12			