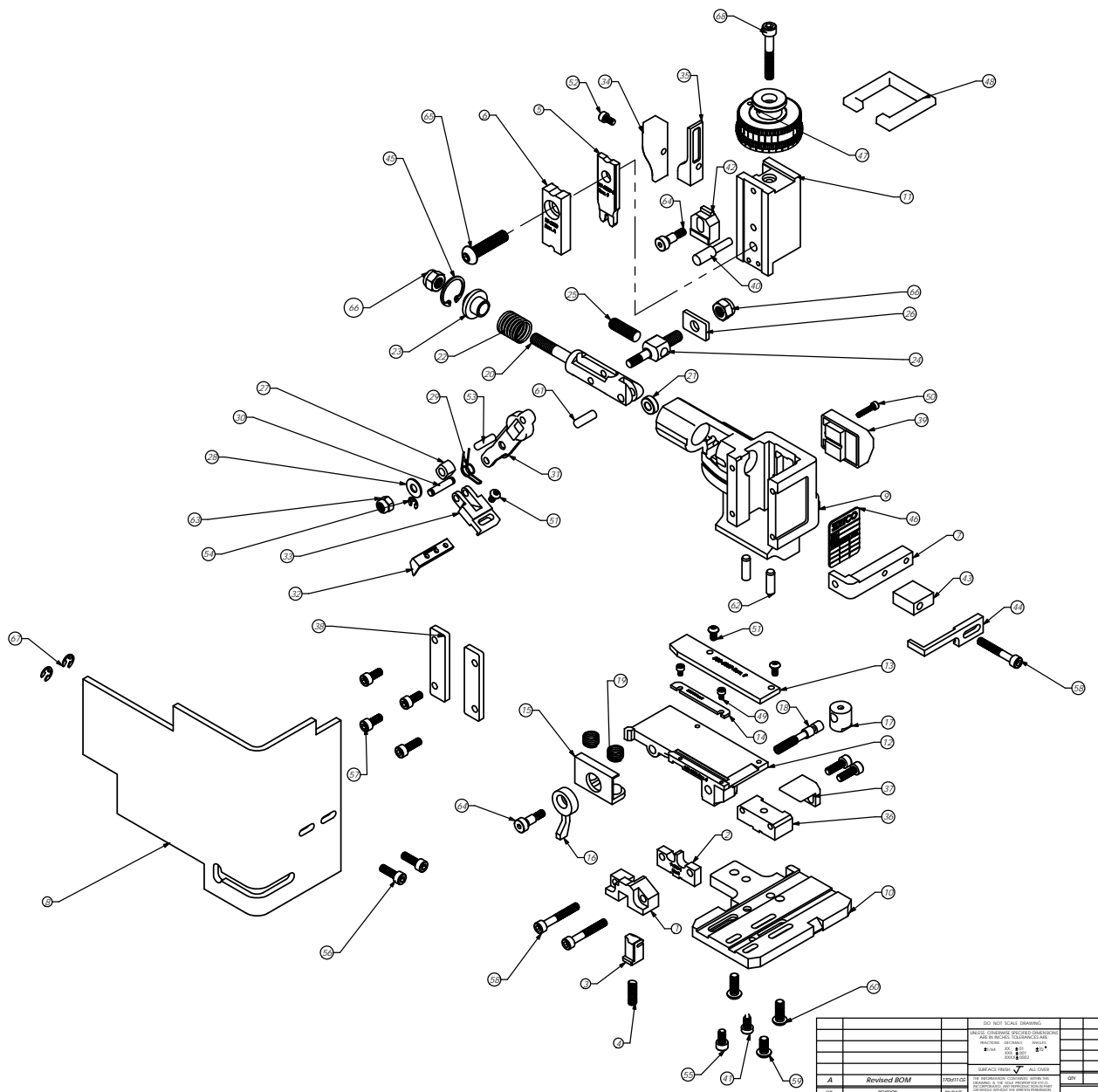


RE93
79174

Parts List				
Item No	Part Code	Part No	Description	QTY
1	61745	8A-4000	Front Cut-off Pad Retainer	1
2	61884	9-4009-1	Armill	1
3	61747	12A-6000	Cut-off Pad	1
4	60601	LC-03C-8	Spring	1
5	63405	13-6009-1	Wire Rolling Tool	1
6	61748	15-6000	Cut-Off Pad Driver	1
7	61626	26-6000	Guard Bracket	1
8	76403	199-3005	Safety Guard	1
9	61542	MM1-S	Frame	1
10	61543	MM2-S	Rear Plate	1
11	61545	MM3-S	Plunger	1
12	61761	250-6006	Feed Plate	1
13	61881	500-6009	Rear Guide	1
14	61762	MM6-S-1	Front Guide	1
15	61549	MM7-S	Brake	1
16	61550	MM8-S	Brake Lever	1
17	61551	MM9-S	Adjustment Screw Retainer	1
18	61552	MM10-S	Adjustment Screw	1
19	61553	MM11-S	Brake Spring	2
20	61554	MM12	Adjustable Feed Piston	1
21	61555	MM13	Cam Roller	1
22	61556	MM14	Piston Spring	1
23	61557	MM15	Spring Plate	1
24	61558	MM16	Feed Adjustment Block	1
25	61559	MM17	Feed Adjustment Screw	1
26	61560	MM18	Retainer	1
27	61561	MM19	Guide Block	1
28	61562	MM20	Feed Washer	1
29	61563	MM21	Feed Finger Spring	1
30	61564	MM22	Feed Finger Shaft	1
31	61565	MM23	Feed Arm	1
32	61664	303-6003	Feed Finger	1
33	61566	MM24	Feed Finger Retainer	1
34	61573	MM31	Post Feed Cam	1
35	61574	MM32	Pre-feed Cam	1
36	61581	MM37-S	Top Block	1
37	61582	MM38-S	Backup Block	1
38	61583	MM39	Cam	2
39	61585	MM42	Counter Assy.	1
40	61586	MM44	Locator Pin	1
41	61588	MM47	Dog Screw	1
42	61590	MM48	ROT Adjustment Block	1
43	61592	MM50-S	Stripper Spacer	1
44	61593	MM51-S	Stripper	1
45	61595	MM56	Retaining Ring	1
46	61598	MM59	ID Plate	1
47	61596	MM57	Continuous Regulation Head Assembly	1
48	61597	MM58	Protection Spacer	1
49	M3x0.5_5.0sh		M3 x 5mm Socket Hd Cap Screw	2
50	M3x0.5_16.0sh		M3 x 0.5 x 16mm Socket Hd Cap Screw	1
51	M4x7_8.0sh		M4 x 7 x 8mm Button Hd Cap Screw	3
52	M4x0.7_8.0sh		M4 x 7 x 8 D Socket Hd Cap Screw	1
53	M5_18.0dp		M5 x 18mm Dowel Pin	1
54	M5_M3_Rear		M5 External Retaining Ring	2
55	M5x_8_10.0sh		M5 x 8 x 10mm Socket Hd Cap Screw	1
56	M5x_8_16.0sh		M5 x 8 x 16mm Socket Hd Cap Screw	5
57	M5x_8_12.0sh		M5 x 8 x 12mm Socket Hd Cap Screw	3
58	M5x_8_35.0sh		M5 x 08 x 35mm Socket Hd Cap Screw	3
59	M6x1.0_12.0sh		M6 x 1.0 x 12mm Button Hd Cap Screw	1
60	M6x1.0_16.0sh		M6 x 1.0 x 16mm Button Hd Cap Screw	2
61	M6_18dp		M6 x 18mm Dowel Pin	1
62	M6_20dp		M6 x 20mm Dowel Pin	2
63	M6_in		M6 Lock Nut	1
64	M6_10shis		M6 x 10mm Socket Hd Shoulder Screw	2
65	M8x1.25_35.0sh		M8 x 1.25 x 35mm Button Hd Cap Screw	2
66	M8_in		M8 Lock Nut	2
67	72069	McMaster Cap #19807A122	#10 E-Style Retaining Ring	2
68	M6x1.0_40.0sh		M6 x 1.0 x 40mm Socket Hd Cap Screw	1

Note:
Items marked in bold are high wear items.



REVISED BOM		DATE	BY	APP. BY	DATE
1	1	08/24/12	CSG		08/24/12
DESCRIPTION		QTY	USED ON	DATE	BY
Side Feed		1		08/24/12	CSG
REVISION		DATE	BY	APP. BY	DATE
1	1	08/24/12	CSG		08/24/12