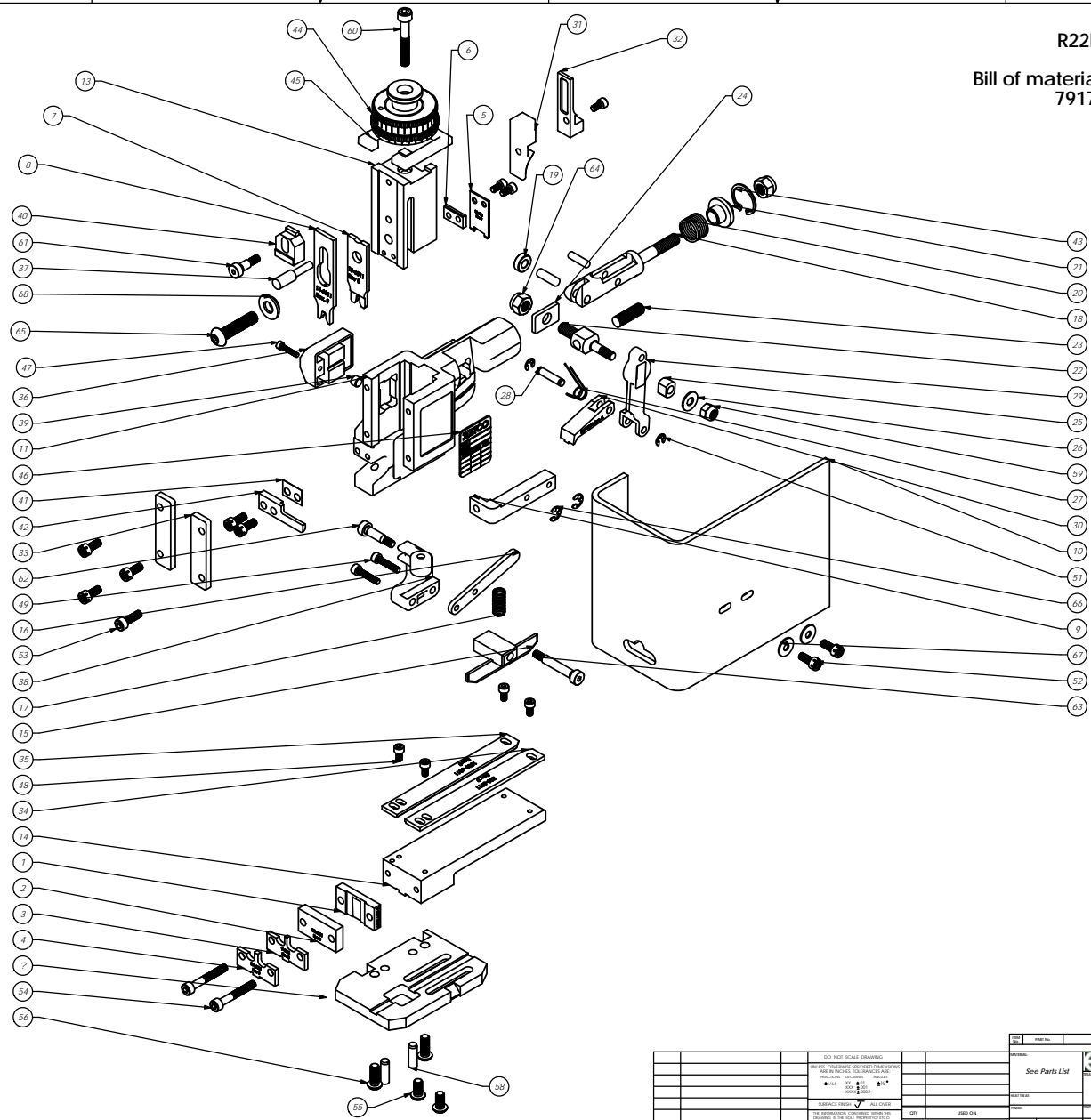


Parts List				
Item No	Part Code	Part No.	Description	Default/Qty
1	61854	8-6011	Rear Cut-Off Die	1
2	61855	8A-6011	Front Cut-Off Die	1
3	61856	9-6011	Anvil	1
4	61857	9A-6011	Anvil	1
5	61858	12-6011	Cut-Off Punch	1
6	61861	12A-6011	Cut-off spacer	1
7	61859	13-6011	Wire Rolling Tool	1
8	61860	14-6011	Insulation Rolling Tool	1
9	61626	26-6000	Guard Bracket	1
10	61715	199-6001	Guard	1
11	61600	MM1.R	Frame	1
12	61601	MM2.R	Base Plate	1
13	61602	MM3.R	Plunger	1
14	61603	MM4.R	Feed Plate	1
15	61888	603-6011	Blade-Style Brake	1
16	61605	MM8.R	Brake Lever	1
17	61633	MM11.R	Brake Spring	1
18	61554	MM12	Adjustable-Feed Piston	1
19	61555	MM13	Cam Roller	1
20	61556	MM14	Piston Spring	1
21	61557	MM15	Spring Plate	1
22	61558	MM16	Feed Adjustment Block	1
23	61559	MM17	Feed Adjustment Screw	1
24	61560	MM18	Retainer	1
25	61561	MM19	Guide Block	1
26	61562	MM20	Feed Washer	1
27	61563	MM21	Feed Finger Spring	1
28	61564	MM22	Feed Finger Shaft	1
29	61565	MM23	Feed Arm	1
30	61889	303-6011	Feed Finger	1
31	61573	MM31	Post-Feed Cam	1
32	61574	MM32	Pre-Feed Cam	1
33	61583	MM39	Cam	2
34	61891	500-6011	Right Guide	1
35	61890	1000-6011	Left Guide	1
36	61585	MM43	Counter Assy	1
37	61586	MM44	Locator Pin	1
38	61609	MM45.R	Brake Arm	1
39	61587	MM46	Counter Button	1
40	61590	MM48	Wt Adjustment Block	1
41	61610	MM50.R	Stripper Spacer	1
42	61611	MM51.R	Stripper	1
43	61595	MM56	Retaining Ring	1
44	61596	MM57	Continuous Regulation Head Assembly	1
45	61597	MM58	Protection Spacer	1
46	61598	MM59	O-Plate	1
47	<i>MSx0.5_16_0th</i>	<i>M3 x 0.5 x 16mm Socket Hd Cap Screw</i>	1	
48	<i>MMx0.7_8_Dth</i>	<i>M4 x 7 x 8 D Socket Hd Cap Screw</i>	1	
49	<i>MMx0.7_20_0th</i>	<i>M4 x 20mm Socket Hd Cap Screw</i>	2	
50	<i>MS_18_0dp</i>	<i>M5 x 18mm Dowel Pin</i>	1	
51	<i>MS_M3_Scm</i>	<i>M5 External Retaining Ring</i>	2	
52	<i>MS_8_12_0th</i>	<i>M5 x 8 x 12mm Socket Hd Cap Screw</i>	1	
53	<i>MSx_8_16_Dth</i>	<i>M5 x 8 x 16mm Socket Hd Cap Screw</i>	1	
54	<i>MSx_8_35_0th</i>	<i>M5 x 8 x 35mm Socket Hd Cap Screw</i>	2	
55	<i>MSx1_0_12_0th</i>	<i>M6 x 1.0 x 12mm Button Hd Cap Screw</i>	2	
56	<i>MSx1_0_16_0th</i>	<i>M6 x 1.0 x 16mm Button Hd Cap Screw</i>	2	
57	<i>M6_18dp</i>	<i>M6 x 18mm Dowel Pin</i>	1	
58	<i>M6_20dp</i>	<i>M6 x 20mm Dowel Pin</i>	2	
59	<i>M6_In</i>	<i>M6 Lock Nut</i>	1	
60	<i>MMx1_0_40_0th</i>	<i>M6 x 1.0 x 40mm Socket Hd Cap Screw</i>	1	
61	<i>M6_10shss</i>	<i>M6 x 10mm Socket Hd Shoulder Screw</i>	1	
62	<i>M6_16shss</i>	<i>M6 x 16mm Socket Hd Shoulder Screw</i>	1	
63	<i>M6_30shss</i>	<i>M6 x 30mm Socket Hd Shoulder Screw</i>	1	
64	<i>M6_In</i>	<i>M6 Lock Nut</i>	2	
65	<i>MMx1_25_35_0th</i>	<i>M8 x 1.25 x 35mm Button Hd Cap Screw</i>	1	
66	72069	MCMaster-Carr #98402A122	#10 E-Style Retaining Ring	2
67	016	#10 Flatwasher	1	
68	61862	MM49.2	Tool Holder	1

Note:
Items marked in bold italic are high wear tooling.



R22E
Bill of material number:
79176

REV		DESCRIPTION	DATE	BY	CHKD
SEE PARTS LIST ASSEMBLY DRAWING					
R22E 6/25/2012					