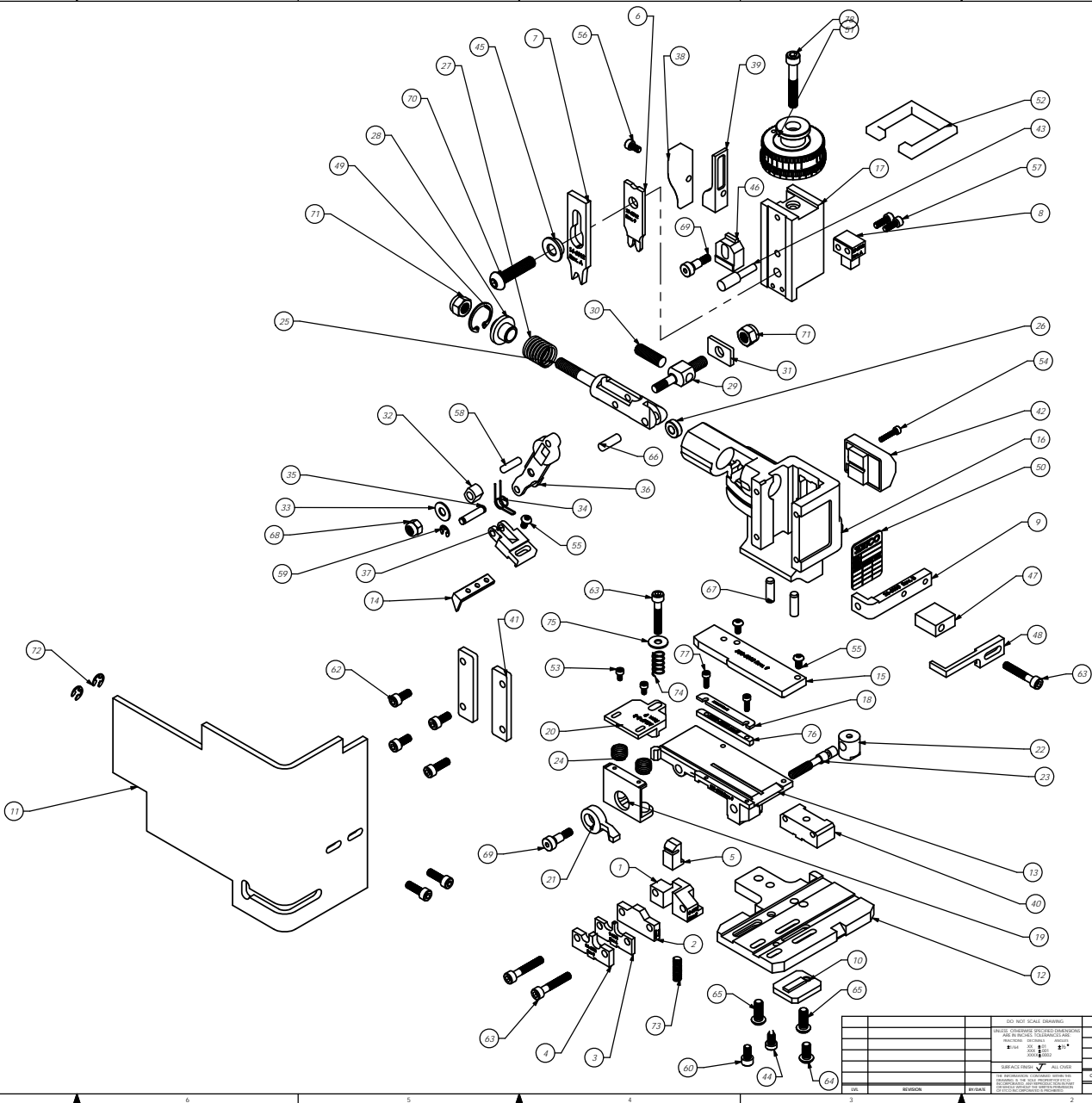


**R16**  
**Bill Of Materials**  
**Number 79177**

Parts List				
Item No	Part Code	Part No.	Description	QTY
1	61846	8-6012	Rear Cut-Off Die	1
2	61853	8A-6012	Cut-Off Die	1
3	61849	9-6012	Anvil	1
4	61850	9A-6012	Anvil	1
5	61847	12-6012	Rear Cut-Off Head	1
6	61851	13-6012	Wire Rolling Tool	1
7	61852	14-6012	Insulation Rolling Tool	1
8	61848	15-6012	Punch Driver	1
9	61626	26-6000	Guard Bracket	1
10	61894	26-6012	Spring Retainer	1
11	76403	199-3005	Safety Guard	1
12	61895	200-6012	Base Plate	1
13	61893	250-6012	Feed Plate	1
14	61625	303-6001	Feed Finger	1
15	61892	500-6012	Rear Guide	1
16	61542	MM1.S	Frame	1
17	61545	MM3.S	Plunger	1
18	61762	MM6-S-1	Front Guide	1
19	61736	MM7-S-1	Brake	1
20	61896	MM7-S-3	Brake Shoe	1
21	61550	MM8.S	Brake Lever	1
22	61551	MM9.S	Adjustment Screw Retainer	1
23	61552	MM10.S	Adjustment Screw	1
24	61553	MM11.S	Brake Spring	2
25	61554	MM12	Adjustable Feed Piston	1
26	61555	MM13	Cam Roller	1
27	61556	MM14	Piston Spring	1
28	61557	MM15	Spring Plate	1
29	61558	MM16	Feed Adjustment Block	1
30	61559	MM17	Feed Adjustment Screw	1
31	61560	MM18	Retainer	1
32	61561	MM19	Guide Block	1
33	61562	MM20	Feed Washer	1
34	61563	MM21	Feed Finger Spring	1
35	61844	MM22	Feed Finger Shaft	1
36	61565	MM23	Feed Arm	1
37	61566	MM24	Feed Finger Retainer	1
38	61573	MM31	Post-feed Cam	1
39	61574	MM32	Pre-Feed Cam	1
40	61581	MM33	Isol Block	1
41	61581	MM35	Isol	2
42	61585	MM43	Counter Assy	1
43	61586	MM44	Locator Pin	1
44	61588	MM47	Dog Screw	1
45	61591	MM49	Tool Header	1
46	61590	MM48	IRT Adjustment Block	1
47	61592	MM50-S	Stripper Spacer	1
48	61593	MM51-S	Stripper	1
49	61595	MM56	Retaining Ring	1
50	61598	MM59	ID Plate	1
51	61596	MM67	Continuous Regulation Head Assembly	1
52	61597	MM58	Protection Spacer	1
53	<i>M3x0.5_6_Dsh</i>	M3 x 0.5 x 6mm Socket Hd Cap Screw	2	
54	<i>M3x0.5_16_Dsh</i>	M3 x 0.5 x 16mm Socket Hd Cap Screw	1	
55	<i>M4x 7_8_Dsh</i>	M4 x 7 x 8mm Button Hd Cap Screw	3	
56	<i>M4x0.7_8_Dsh</i>	M4 x 7 x 8 D Socket Hd Cap Screw	1	
57	<i>M4x0.7_12_Dsh</i>	M4 x 12mm Socket Hd Cap Screw	2	
58	<i>M5_18_Dshp</i>	M5 x 18mm Dowel Pin	1	
59	<i>M5_M3_Rear</i>	M5 External Retaining Ring	2	
60	<i>M5x 8_10_Dsh</i>	M5 x 8 x 10mm Socket Hd Cap Screw	1	
61	<i>M5x 8_15_Dsh</i>	M5 x 8 x 15mm Socket Hd Cap Screw	3	
62	<i>M5x 8_12_Dsh</i>	M5 x 8 x 12mm Socket Hd Cap Screw	3	
63	<i>M5x 8_30_Dsh</i>	M5 x 8 x 30mm Socket Hd Cap Screw	4	
64	<i>M6x 1.0_12_Dshp</i>	M6 x 1.0 x 12mm Button Hd Cap Screw	1	
65	<i>M6x 1.0_16_Dshp</i>	M6 x 1.0 x 16mm Button Hd Cap Screw	2	
66	<i>M6_18dp</i>	M6 x 18mm Dowel Pin	1	
67	<i>M6_20dp</i>	M6 x 20mm Dowel Pin	2	
68	<i>M6_in</i>	M6 Lock Nut	1	
69	<i>M6_10shs</i>	M6 x 10mm Socket Hd Shoulder Screw	2	
70	<i>M8 1.25_35_Dshp</i>	M8 x 1.25 x 35mm Button Hd Cap Screw	1	
71	<i>M8_in</i>	M8 Lock Nut	2	
72	72069	MC-Mounting Cap #10x17x1.22	#10 E-Style Retaining Ring	2
73	60204	032x25x.75	Spring	1
74	61897	LC-040-E6	Brake Spring	1
75	10Fw		#10 Flatwasher	1
76	61663	1000-6003	Front Guide	1
77	<i>M6x 1.0_10_Dsh</i>	M6 x 1.0 x 10mm Socket Hd Cap Screw	2	
78	<i>M6x 1.0_40_Dsh</i>	M6 x 1.0 x 40mm Socket Hd Cap Screw	1	



**Note:**  
**Items marked in bold italic are high wear tooling.**

ISO 9001:2015 CERTIFIED ISO 14001:2015 CERTIFIED ISO 45001:2018 CERTIFIED ISO 13485:2016 CERTIFIED ISO 9001:2015 CERTIFIED ISO 14001:2015 CERTIFIED ISO 45001:2018 CERTIFIED ISO 13485:2016 CERTIFIED		SEE PARTS LIST Assembly Drawing <b>R16</b> 7/24/2012	
REV	REVISION	BY	DATE
1			