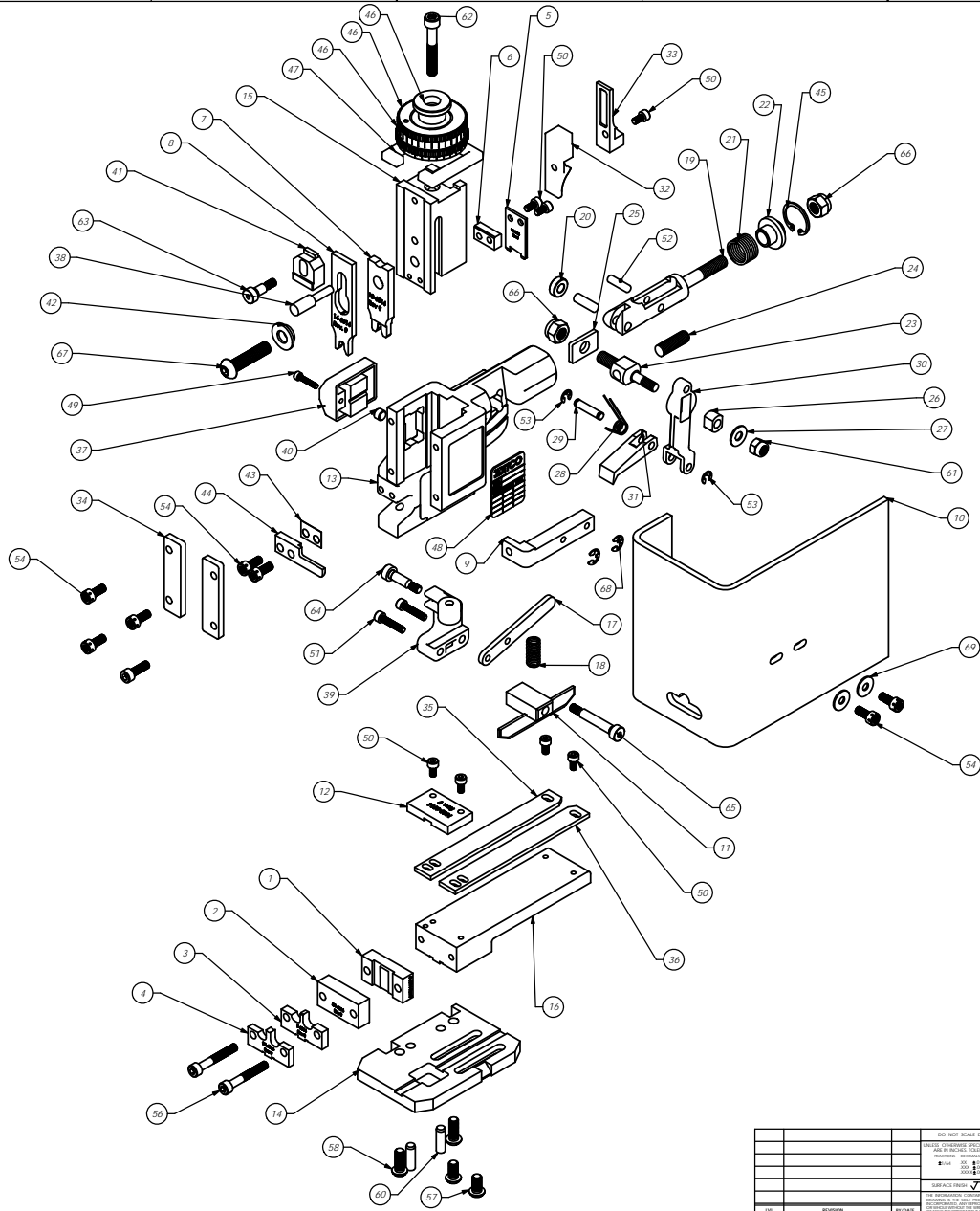


Parts List				
Item No.	Part Code	Part No.	Description	Default/ QTY.
1	61905	8-6014	Rear Cut-Off Die	1
2	61906	8A-6014	Front Cut-Off Die	1
3	61901	9-6014	Anvil	1
4	61902	9A-6014	Anvil	1
5	61903	12-6014	Cut-off Punch	1
6	61904	12A-6014	Cut-off spacer	1
7	61899	13-6014	Wire Rolling Tool	1
8	61900	14-6014	Insulation Rolling Tool	1
9	61626	26-6000	Guard Bracket	1
10	61715	199-6001	Guard	1
11	61888	403-6011	Blade Style Brake	1
12	61917	1600-6014	Guide Mounted Hold Down	1
13	61600	MM1-R	Frame	1
14	61601	MM2-R	Base Plate	1
15	61602	MM3-R	Plunger	1
16	61603	MM4-R	Feed Plate	1
17	61605	MM6-R	Brake Lever	1
18	61633	MM11-R	Brake Spring	1
19	61554	MM12	Adjustable Feed Piston	1
20	61555	MM13	Cam Roller	1
21	61556	MM14	Piston Spring	1
22	61557	MM15	Spring Plate	1
23	61558	MM16	Feed Adjustment Block	1
24	61559	MM17	Feed Adjustment Screw	1
25	61560	MM18	Retainer	1
26	61561	MM19	Guide Block	1
27	61562	MM20	Feed Washer	1
28	61563	MM21	Feed Finger Spring	1
29	61564	MM22	Feed Finger Shaft	1
30	61565	MM23	Feed Arm	1
31	61606	MM25-R	Feed Finger	1
32	61573	MM31	Post-feed Cam	1
33	61574	MM32	Pre-Feed Cam	1
34	61583	MM39	Gip	2
35	61607	MM41-R	Left Guide	1
36	61608	MM42-R	Right Guide	1
37	61585	MM43	Counter Assy.	1
38	61586	MM44	Locator Pin	1
39	61609	MM45-R	Brake Arm	1
40	61587	MM46	Counter Button	1
41	61590	MM48	IRI Adjustment Block	1
42	61918	MM49-6	Tool Holder	1
43	61610	MM50-R	Stripper Spacer	1
44	61611	MM51-R	Stripper	1
45	61595	MM56	Retaining Ring	1
46	61596	MM57	Continuous Regulation Head Assembly	1
47	61597	MM58	Protection Spacer	1
48	61598	MM59	ID Plate	1
49	<i>M3x0.5_16.0sh</i>	<i>M3 x 0.5 x 16mm socket Hd Cap Screw</i>	1	
50	<i>M4x0.7_8.0sh</i>	<i>M4 x .7 x 8.0 Socket Hd Cap Screw</i>	7	
51	<i>M4x0.7_20.0sh</i>	<i>M4 x 20mm Socket Hd Cap Screw</i>	2	
52	<i>M5_18.0dp</i>	<i>M5 x 18mm Dowel Pin</i>	1	
53	<i>M5_M3.9err</i>	<i>M5 External Retaining Ring</i>	2	
54	<i>M5-.8_12.0sh</i>	<i>M5 x .8 x 12mm Socket Hd Cap Screw</i>	7	
55	<i>M5x.8_16.0sh</i>	<i>M5 x .8 x 16mm Socket Hd Cap Screw</i>	1	
56	<i>M5x.8_35.0sh</i>	<i>M5 x .8 x 35mm socket Hd Cap Screw</i>	2	
57	<i>M6x1.0_12.0b</i>	<i>M6 x 1.0 x 12mm Button Hd Cap Screw</i>	2	
58	<i>M6x1.0_16.0b</i>	<i>M6 x 1.0 x 16mm Button Hd Cap Screw</i>	2	
59	<i>M6_18dp</i>	<i>M6 x 18mm Dowel Pin</i>	1	
60	<i>M6_20dp</i>	<i>M6 x 20mm Dowel Pin</i>	2	
61	<i>M6_in</i>	<i>M6 Lock Nut</i>	1	
62	<i>M6x1.0_40.0sh</i>	<i>M6 x 1.0 x 40mm socket Hd Cap Screw</i>	1	
63	<i>M6_10shss</i>	<i>M6 x 10mm Socket Hd Shoulder Screw</i>	1	
64	<i>M6_16shss</i>	<i>M6 x 16mm Socket Hd Shoulder Screw</i>	1	
65	<i>M6_30shss</i>	<i>M6 x 30mm Socket Hd Shoulder Screw</i>	1	
66	<i>M8_in</i>	<i>M8 Lock Nut</i>	2	
67	62092	<i>M8 x 1.25 x 35mm Button Hd Cap Screw</i>	1	
68	72069	McMaster Car #98407A122	#10 E-Style Retaining Ring	2
69		10lv	#10 Flatwasher	2

Note: Items marked in bold italic are high wear tooling.



D260_265E
79179

Approved
For
Tooling
5/16/2012

REV	REVISION	BY	DATE	APP. DATE	APP. NAME
1					

NO. 100	REV. 1.0	DATE 05/16/2012	BY J.F.	APP. J.F.
SEE PARTS LIST				
ASSEMBLY DRAWING				
D260_265E				
DATE	REV.	BY	APP.	DATE