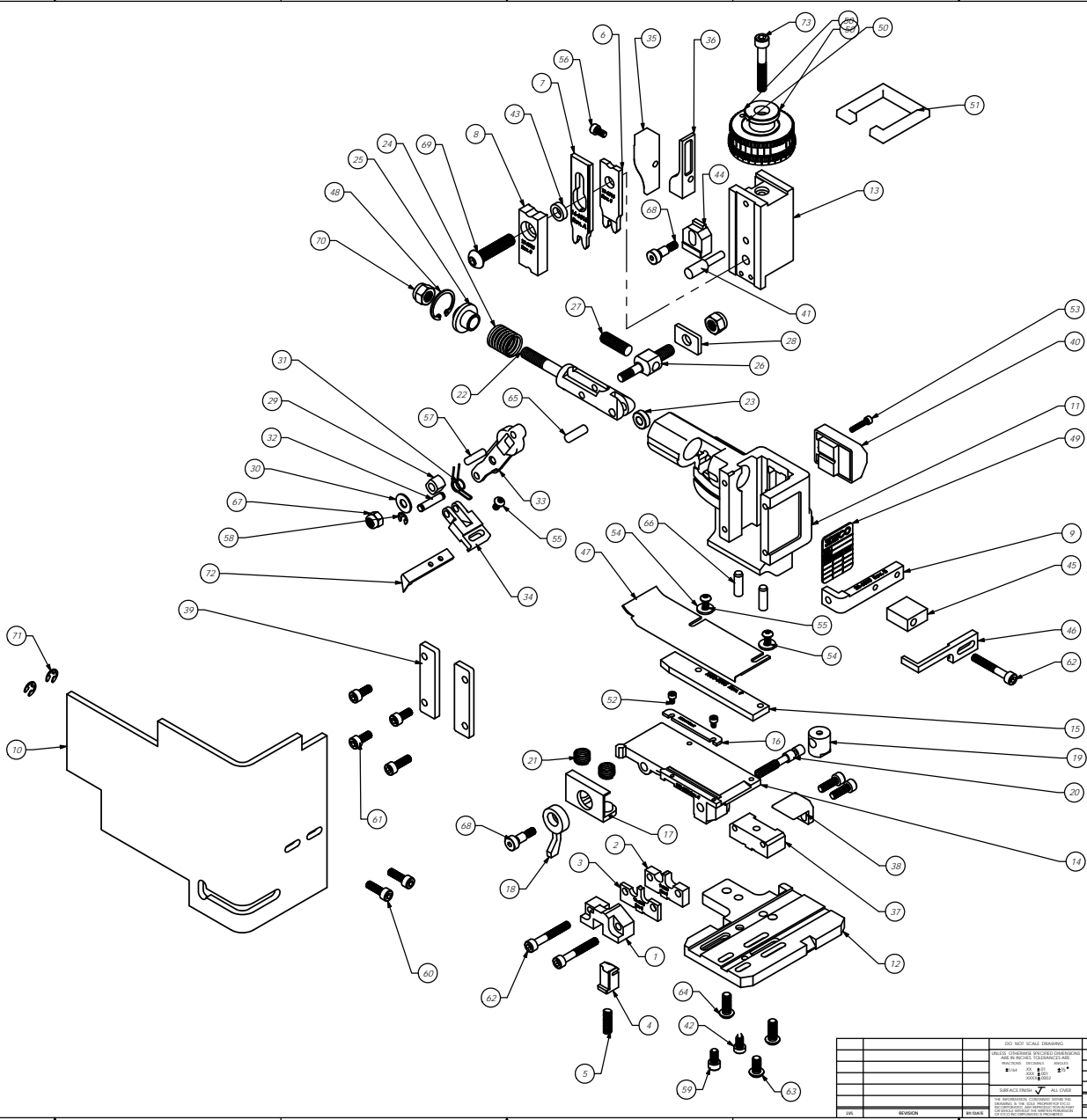


D265N
79180

Parts List				
Item No	Part Code	Part No.	Description	QTY.
1	61745	8A-4000	Front Cut-off Pad Retainer	1
2	61909	9-4015	Anvil	1
3	61910	9A-4015	Insulation Anvil	1
4	61747	12A-6000	Cut-off Pad	1
5	60601	LC-023C-8	Spring	1
6	61907	13-4015	Wire Rolling Tool (F260)	1
7	61908	14-4015	Insulation Rolling Tool	1
8	61916	15-4015	Cut-Off Pad Driver	1
9	61626	26-6000	Guard Bracket	1
10	76403	190-3008	Safety Guard	1
11	61542	MM1.S	Frame	1
12	61543	MM2.S	Base Plate	1
13	61545	MM3.S	Plunger	1
14	61761	250-6056	Feed Plate	1
15	61915	1000-6015	Rear Guide	1
16	61762	MM6.S-1	Front Guide	1
17	61549	MM7.S	Brake	1
18	61550	MM8.S	Brake Lever	1
19	61551	MM9.S	Adjustment Screw Retainer	1
20	61552	MM10.S	Adjustment Screw	1
21	61553	MM11.S	Brake Spring	2
22	61554	MM12	Adjustable Feed Piston	1
23	61555	MM13	Cam Roller	1
24	61556	MM14	Piston Spring	1
25	61557	MM15	Spring Plate	1
26	61558	MM16	Feed Adjustment Block	1
27	61559	MM17	Feed Adjustment Screw	1
28	61560	MM18	Retainer	1
29	61561	MM19	Guide Block	1
30	61562	MM20	Feed Washer	1
31	61563	MM21	Feed Finger Spring	1
32	61564	MM22	Feed Finger Shaft	1
33	61565	MM23	Feed Arm	1
34	61566	MM24	Feed Finger Retainer	1
35	61573	MM31	Post Feed Cam	1
36	61574	MM32	Pre Feed Cam	1
37	61581	MM37.S	Tool Back	1
38	61582	MM38.S	Backup Block	1
39	61583	MM39	CB	2
40	61585	MM42	Counter Assy.	1
41	61586	MM44	Locator Pin	1
42	61588	MM47	Dog Screw	1
43	61912	MM49.S	Tool Holder	1
44	61590	MM48	Rfl Adjustment Block	1
45	61592	MM50.S	Slipper Spacer	1
46	61593	MM51.S	Slipper	1
47	61594	MM54.S	Top Guide / Stock Chute	1
48	61595	MM56	Retaining Ring	1
49	61598	MM59	ID Plate	1
50	61596	MM57	Continuous Regulation Head Assembly	1
51	61597	MM58	Protection Spacer	1
52	M3x0.5_5.0h	M3 x 5mm Socket Hd Cap Screw	2	
53	M3x0.5_16.0h	M3 x 0.5 x 16mm Socket Hd Cap Screw	1	
54	M4W	M4 Flat Washer	2	
55	M4x 7_8.0h	M4 x 7 x 8mm Button Hd Cap Screw	3	
56	M4x7_8.0h	M4 x 7 x 8 D Socket Hd Cap Screw	1	
57	M5_18.0dp	M5 x 18mm Dowel Pin	1	
58	M5_M3_Sur	M5 External Retaining Ring	2	
59	M5x 8_10.0h	M5 x 8 x 10mm Socket Hd Cap Screw	1	
60	M5x 8_16.0h	M5 x 8 x 16mm Socket Hd Cap Screw	5	
61	M5x 8_12.0h	M5 x 8 x 12mm Socket Hd Cap Screw	3	
62	M5x 8_35.0h	M5 x 08 x 35mm Socket Hd Cap Screw	3	
63	M6x1.0_12.0h	M6 x 1.0 x 12mm Button Hd Cap Screw	1	
64	M6x1.0_16.0h	M6 x 1.0 x 16mm Button Hd Cap Screw	2	
65	M6_18dp	M6 x 18mm Dowel Pin	1	
66	M6_20dp	M6 x 20mm Dowel Pin	2	
67	M6_N	M6 Lock Nut	1	
68	M6_10hss	M6 x 10mm Socket Hd Shoulder Screw	2	
69	62092	M8 x 1.25_35.0h	M8 x 1.25 x 35mm Button Hd Cap Screw	1
70	M8_N	M8 Lock Nut	2	
71	72069	MCM0907-L-20	#10-E Style Retaining Ring	2
72	61567	MM25.S	Feed Finger	1
73	M6x1.0_40.0h	M6 x 1.0 x 40mm Socket Hd Cap Screw	1	

Note:
Items marked in bold italic are high wear tooling.



REV. NO.		REV. DATE	REV. BY	REV. REASON	REV. CHECKED	REV. APPROVED
1						
2						
3						
4						
5						
6						
7						
8						
9						
10						
11						
12						
13						
14						
15						
16						
17						
18						
19						
20						
21						
22						
23						
24						
25						
26						
27						
28						
29						
30						
31						
32						
33						
34						
35						
36						
37						
38						
39						
40						
41						
42						
43						
44						
45						
46						
47						
48						
49						
50						
51						
52						
53						
54						
55						
56						
57						
58						
59						
60						
61						
62						
63						
64						
65						
66						
67						
68						
69						
70						
71						
72						
73						