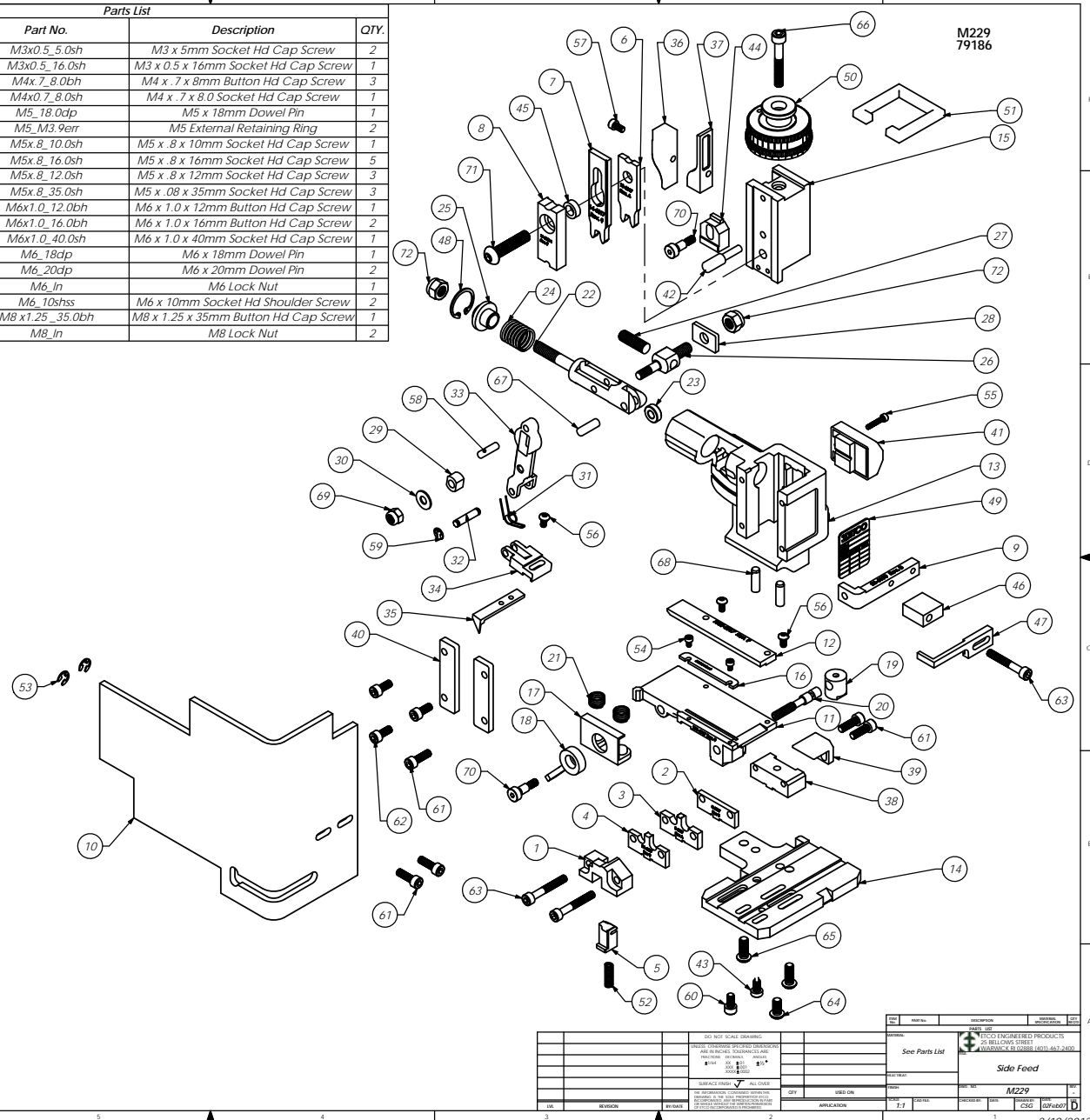


Parts List					Parts List				
Item No.	Part Code	Part No.	Description	QTY.	Item No.	Part Code	Part No.	Description	QTY.
1	61745	8A-6000	Front Cut-off Pad Retainer	1	54		M3x0.5_5.0sh	M3 x 5mm Socket Hd Cap Screw	2
2	61972	8-6017	Die Spacer	1	55		M3x0.5_16.0sh	M3 x 0.5 x 16mm Socket Hd Cap Screw	1
3	61951	9-6017	Anvil	1	56		M4x 7_8.0bh	M4 x .7 x 8mm Button Hd Cap Screw	3
4	61952	9A-6017	Insulation Anvil	1	57		M4x0.7_8.0sh	M4 x .7 x 8.0 Socket Hd Cap Screw	1
5	61747	12A-6000	Cut-off Pad	1	58		M5_18.0dp	M5 x 18mm Dowel Pin	1
6	61949	13-6017	Wire Rolling Tool	1	59		M5_M3.9err	M5 External Retaining Ring	2
7	61950	14-6017	Insulation Rolling Tool	1	60	63521	M5x 8_10.0sh	M5 x .8 x 10mm Socket Hd Cap Screw	1
8	61971	15-6000-1	Cut-Off Pad Driver	1	61		M5x 8_16.0sh	M5 x .8 x 16mm Socket Hd Cap Screw	5
9	61626	26-6000	Guard Bracket	1	62		M5x 8_12.0sh	M5 x .8 x 12mm Socket Hd Cap Screw	3
10	61973	199-6017	Safety Guard	1	63		M5x 8_35.0sh	M5 x .08 x 35mm Socket Hd Cap Screw	3
11	61953	250-6017	Feed Plate	1	64		M6x1.0_12.0bh	M6 x 1.0 x 12mm Button Hd Cap Screw	1
12	61954	1000-6017	Rear Guide	1	65		M6x1.0_16.0bh	M6 x 1.0 x 16mm Button Hd Cap Screw	2
13	61542	MM1-S	Frame	1	66		M6x1.0_40.0sh	M6 x 1.0 x 40mm Socket Hd Cap Screw	1
14	61543	MM2-S	Base Plate	1	67		M6_18dcp	M6 x 18mm Dowel Pin	1
15	61545	MM3-S	Plunger	1	68		M6_20dcp	M6 x 20mm Dowel Pin	2
16	61762	MM6-S-1	Front Guide	1	69		M6_in	M6 Lock Nut	1
17	61549	MM7-S	Brake	1	70		M6_10shss	M6 x 10mm Socket Hd Shoulder Screw	2
18	61550	MM8-S	Brake Lever	1	71	62092	M8 x1.25_35.0bh	M8 x 1.25 x 35mm Button Hd Cap Screw	1
19	61551	MM9-S	Adjustment Screw Retainer	1	72		M8_in	M8 Lock Nut	2
20	61552	MM10-S	Adjustment Screw	1					
21	61553	MM11-S	Brake Spring	2					
22	61554	MM12	Adjustable Feed Piston	1					
23	61555	MM13	Cam Roller	1					
24	61556	MM14	Piston Spring	1					
25	61557	MM15	Spring Plate	1					
26	61558	MM16	Feed Adjustment Block	1					
27	61559	MM17	Feed Adjustment Screw	1					
28	61560	MM18	Retainer	1					
29	61561	MM19	Guide Block	1					
30	61562	MM20	Feed Washer	1					
31	61563	MM21	Feed Finger Spring	1					
32	61564	MM22	Feed Finger Shaft	1					
33	61565	MM23	Feed Arm	1					
34	61566	MM24	Feed Finger Retainer	1					
35	61567	MM25-S	Feed Finger	1					
36	61573	MM31	Post-feed Cam	1					
37	61574	MM32	Pre-Feed Cam	1					
38	61581	MM37-S	Tool Block	1					
39	61582	MM38-S	Backup Block	1					
40	61583	MM39	Gib	2					
41	61585	MM43	Counter Ass'y.	1					
42	61586	MM44	Locator Pin	1					
43	61588	MM47	Dog Screw	1					
44	61590	MM48	IRT Adjustment Block	1					
45	61974	MM49-8	Tool Holder	1					
46	61592	MM50-S	Stripper Spacer	1					
47	61593	MM51-S	Stripper	1					
48	61595	MM56	Retaining Ring	1					
49	61598	MM59	ID Plate	1					
50	61596	MM57	Continuous Regulation Head Assembly	1					
51	61597	MM58	Protection Spacer	1					
52	60601	LC-032C-8	Spring	1					
53	72069	McMaster Carr #98407A122	#10 E-Style Retaining Ring	2					



Note:
 1) Items marked in bold italic are high wear tooling.
 It is recommended that spares be kept on hand to minimize
 down time.

2) Use OEM tooling and replacement parts only.

See Parts List		M229		Side Feed	
REV	REVISION	DATE	BY	CHKD	APP'D