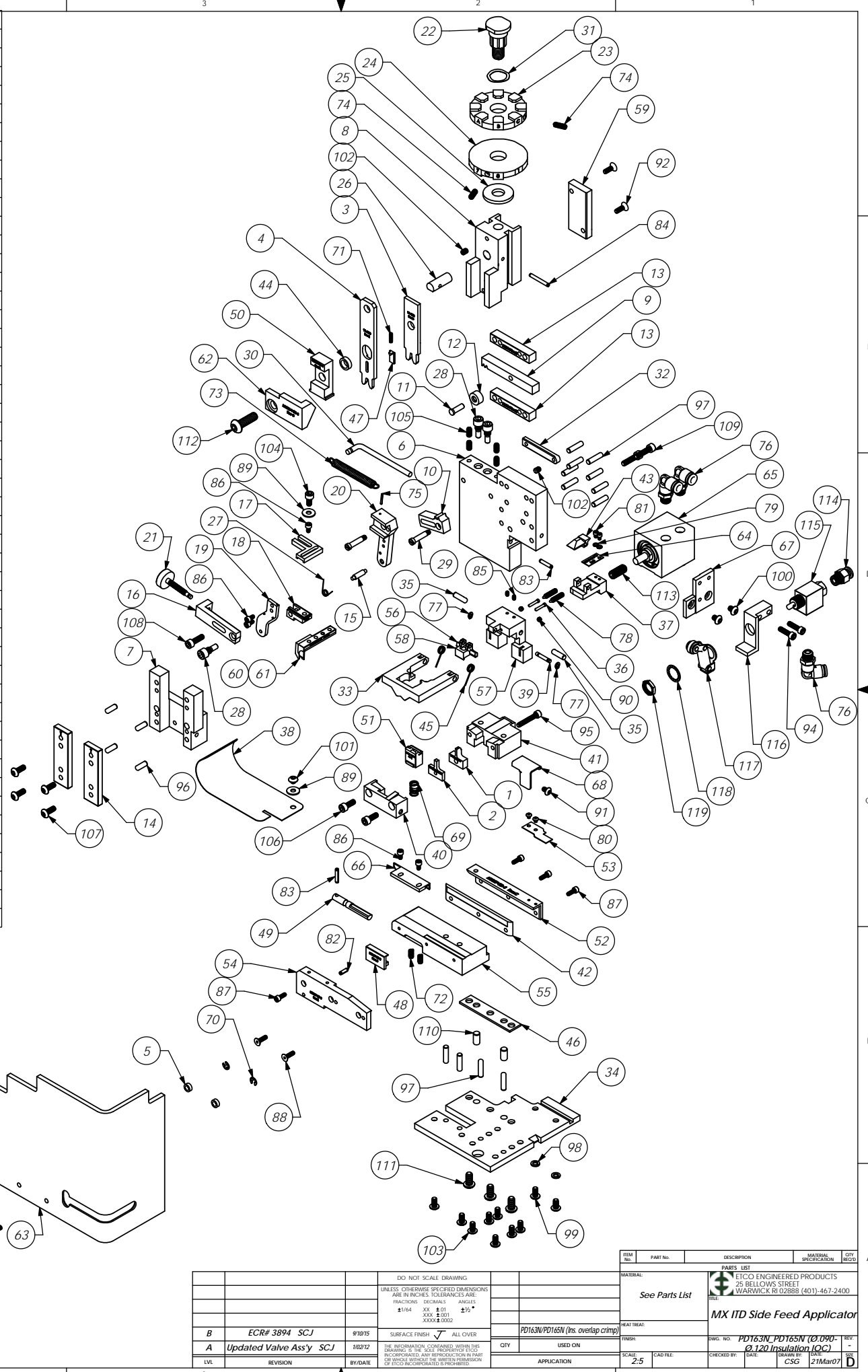


ITEM NO.	Part Code	PART NUMBER	DESCRIPTION	QTY.	ITEM NO.	Part Code	PART NUMBER	DESCRIPTION	QTY.
1	76652	9-4001	Wire Anvil	1	72	78681	LC-029B-3-M	Compression Spring	2
2	76651	9A-4001	Insulation Anvil	1	73	74611	LE-037CD-6	Extension Spring	1
3	76655	13-4001	Wire Rolling Tool	1	74	70739	McMaster-Carr #3126A53	Spring Plunger	2
4	76654	14-4003	Insulation Rolling Tool (Overlap)	1	75	74447	McMaster-Carr #98296A109	Expansion Pin (1/16 x 1/2")	1
5	73888	GS-125	Guard Spacer	2	76	72352	Pisco PL250-N1U	Ø1/4" x 1/8-NPT Elbow Fitting	3
6	71494	MX2A-S-1	Mounting Frame	1	77	63200	Truarc #5555-12	Retaining Ring	2
7	71030	MX2B-S	Plunger Frame	1	78	63201	Vlier #PH-51-P	Spring Plunger	2
8	74343	MX3	Ram	1	79	63202	4lw	#4 Lock Washer	2
9	74438	MX5-S	Cam Rack	1	80	63203	4-40_.13bh	#4-40 x 1/8" Button Hd Cap Screw	2
10	74346	MX6	Gear Arm	1	81	63204	4-40_.16sh	#4-40 x 5/32" Socket Hd Cap Screw	2
11	74347	MX7	Cam Pin	1	82	63205	1.8_.38rp	Ø 1/8" x 3/8" Roll Pin	1
12	74350	MX8	Cam Roller	1	83	63053	1.8_.63rp	1/8" x 5/8" Roll Pin	2
13	74351	MX10-S	Rack Pad	2	84	62040	1.8_1.00rp	1/8" x 1" Roll Pin	1
14	74352	MX11	Gib	2	85	63206	5-40_.19ssf	#5-40 x 3/16" Socket Set Screw	2
15	74356	MX12	Feed Finger Pivot Pin	1	86	63207	6-32_.25sh	#6-32 x 1/4" Socket Hd Cap Screw	5
16	74360	MX13	Adjusting Bar	1	87	63209	6-32_.38sh	#6-32 x 3/8" Socket Hd Cap Screw	4
17	76868	MX14-1-S	Feed Finger Arm	1	88	63057	6-32_.50fh	#6-32 x 1/2" Flat Hd Cap Screw	2
18	76874	MX15-1-S	Feed Finger Guide	1	89	63210	8fw	#8 Flatwasher	2
19	74364	MX16	Retainer	1	90	63211	8-32_.13ssf	#8-32 x 1/8" Socket Hd Set Screw	2
20	71495	MX18-S-1	Swing Arm	1	91	63212	8-32_.25bh	#8-32 x 1/4" Button Hd Cap Screw	1
21	74376	MX25	Stroke Adjustment Screw	1	92	63052	8-32_.50fh	#8-32 x 1/2" Flat Hd Cap Screw	2
22	74407	MX33	Mounting Post	1	93	63164	8-32_.50sh	#8-32 x 1/2" Socket Hd Cap Screw	2
23	72002	MX34-D	Wire Crimp Dial	1	94	63162	8-32_.63sh	#8-32 x 5/8" Socket Hd Cap Screw	2
24	74409	MX35	Insulation Dial	1	95	63213	8-32_1.00sh	#8-32 x 1" Socket Hd Cap Screw	1
25	74411	MX36	Dial Spacer	1	96	63158	3.16_.50dp	Ø 3/16" x 1/2" Dowel Pin	4
26	74412	MX44	Locating Dowel	1	97	63470	3.16_.75dp	Ø 3/16" x 3/4" Dowel Pin	12
27	74415	MX45-S	Feed Finger Spring	1	98	78517	10lw	#10 Lockwasher	2
28	74419	MX50	Safety Pivot Pin	3	99	63531	10-24_.38bh	#10-24 x 3/8" Button Hd Cap Screw	2
29	71493	MX52-S-1	Pivot Pin	2	100	78687	10-32_.25bh	#10-32 x 1/4" Button Hd Cap Screw	2
30	74614	MX90-S	Spring Bracket	1	101	78327	10-32_.13bh	#10-32 x 1/8" Button Hd Cap Screw	1
31	72310	MX104	Wave Disc Spring	1	102	63054	10-32_.25ss	#10-32 x 1/4" Socket Hd Set Screw	2
32	71678	MX105-S	Pivot Pin Plate	1	103	78993	10-32_.38bh	#10-32 x 3/8" Button Hd Cap Screw	8
33	70865	MX301-4-ITD-S	Latching Gate	1	104	70110	10-32_.38sh	#10-32 x 3/8" Socket Hd Cap Screw	1
34	72261	MX302-1-ITD-S	Base Plate	1	105		10-32_.38ssf	#10-32 x 3/8" Socket Hd Set Screw	4
35	76563	MX304-ITD-S	Hinge Pin	2	106	63056	10-32_.50sh	#10-32 x 1/2" Socket Hd Cap Screw	2
36	76564	MX305-ITD-S	Pin	2	107	76501	10-32_.50bh	#10-32 x 1/2" Button Hd Cap Screw	4
37	72258	MX306-1-ITD-S	Insulation Pusher for 3/16 Fem. Terminal	1	108	70293	10-32_.63sh	#10-32 x 5/8" Socket Hd Cap Screw	1
38	76566	MX307-ITD-S	Stock Chute	1	109	63532	10-32_.75sh	#10-32 x 3/4" Socket Hd Cap Screw	2
39	76567	MX308-ITD-S	Latch Pivot Pin	1	110	63827	1.4_.50dp	Ø 1/4" x 1/2" Dowel Pin	2
40	78936	MX309-4-ITD-S	Cut-off Keeper	1	111	63632	1.4-20_.50bh	1/4-20 x 1/2" Button Hd Cap Screw	3
41	72257	MX310-1-ITD-S	Die Holder	1	112	63055	5.16-18_1.00bh	5/16-18 x 1" Button Hd Cap Screw	1
42	76571	MX312-ITD-S	Left Feed Shim (3/16" Terminal)	1	113	71086	5.16-24_.75ssf	5/16-24 x 3/4" Socket Hd Set Screw	1
43	76573	MX314-ITD-S	Catch	1	114	73222	Pisco PC250-N1U	1/4" x 1/8" NPT Straight	1
44	76574	MX315-ITD-S	Insulation Tool Spacer	1	115	72318	Clippard MJV-3	3-Way Valve	1
45	76575	MX316-ITD-S	Latch Spring	2	116	61993	MX358-2-ITD-S	Valve Mounting Plate	1
46	76576	MX317-ITD-S	Base Plate Spacer	1	117	72317	Clippard #12296	Cam Follower	1
47	76578	MX319-ITD-S	Knock off	1	118		1.2lsw	1/2" Internal Star Washer	1
48	76579	MX320-ITD-S	Brake	1	119		15.32-32hn	15/32-32 Hex Nut	1
49	76580	MX321-ITD-S	Brake Actuator	1					
50	76583	MX324-ITD-S	Cut-off Pad Pusher	1					
51	78935	MX326-4-ITD-S	Cut-off Pad	1					
52	76586	MX327-ITD-S	Left Feed Rail	1					
53	76587	MX328-ITD-S	Hold Down Spring	1					
54	76588	MX329-ITD-S	Right Feed Rail	1					
55	76589	MX330-ITD-S	Feed Plate	1					
56	76590	MX331-ITD-S	Latch (Automatic)	1					
57	76591	MX332-ITD-S	Support	1					
58	76593	MX334-ITD-S	Latch/Wire Stop	1					
59	76608	MX335-ITD-S	Cam	1					
60	76661	MX337-ITD-S	Feed Finger (fed between carrier and inslu ear)	1					
61	71686	MX337-2-ITD-S	Feed Finger (fed in carrier strip hole)	1					
62	72233	MX338-1-ITD-S	Arm Switch Cam (1 1/8" Stroke)	1					
63	70745	MX339-ITD-S	Guard	1					
64	72260	MX344-1-ITD-S	Leaf Spring	1					
65	72099	MX348-ITD-S	.550 Strike Slide Cylinder	1					
66	72893	MX357-ITD-S	Bracket	1					
67	78733	MX358-1-ITD-S	Valve Mounting Plate	1					
68	78835	MX360-ITD-S	Scrap Retainer	1					
69	78719	LC-051D-11-M	Compression Spring	1					
70	72069	McMaster Carr #98407A118	#8 E-Style Retaining Ring	2					
71	72315	LC-022A-4	Compression Spring	1					



**Assembly Drawing and Bill of Materials**  
**Applicator Type: MX ITD Side**  
**Terminal: PD163N\_165N (.090-.120 Dia. Insulation) (IOC)**  
**BOM # 79189**

**Section 5**

- Note:**
- (1) Items marked in bold text are high wear components.
  - (2) Use OEM replacement tooling only.
  - (3) Recommended machine speed for automatic equipment is a maximum of 3500 parts per hour.

REV	DATE	BY/DAE	APP	SCALE	DATE	CHKD	APP
B		ECR# 3894 SCJ	9/10/15	2.5			
A		Updated Valve Assy SCJ	9/10/15	2.5			

DO NOT SCALE DRAWING	UNLESS OTHERWISE SPECIFIED DIMENSIONS ARE IN INCHES. TOLERANCES ARE:
FRACTIONS	DECIMALS
±.004	±.01
±.001	±.005
±.0005	±.001
±.0002	±.0005

REVISION	DATE	BY/DAE	APP	SCALE	DATE	CHKD	APP
B		ECR# 3894 SCJ	9/10/15	2.5			
A		Updated Valve Assy SCJ	9/10/15	2.5			