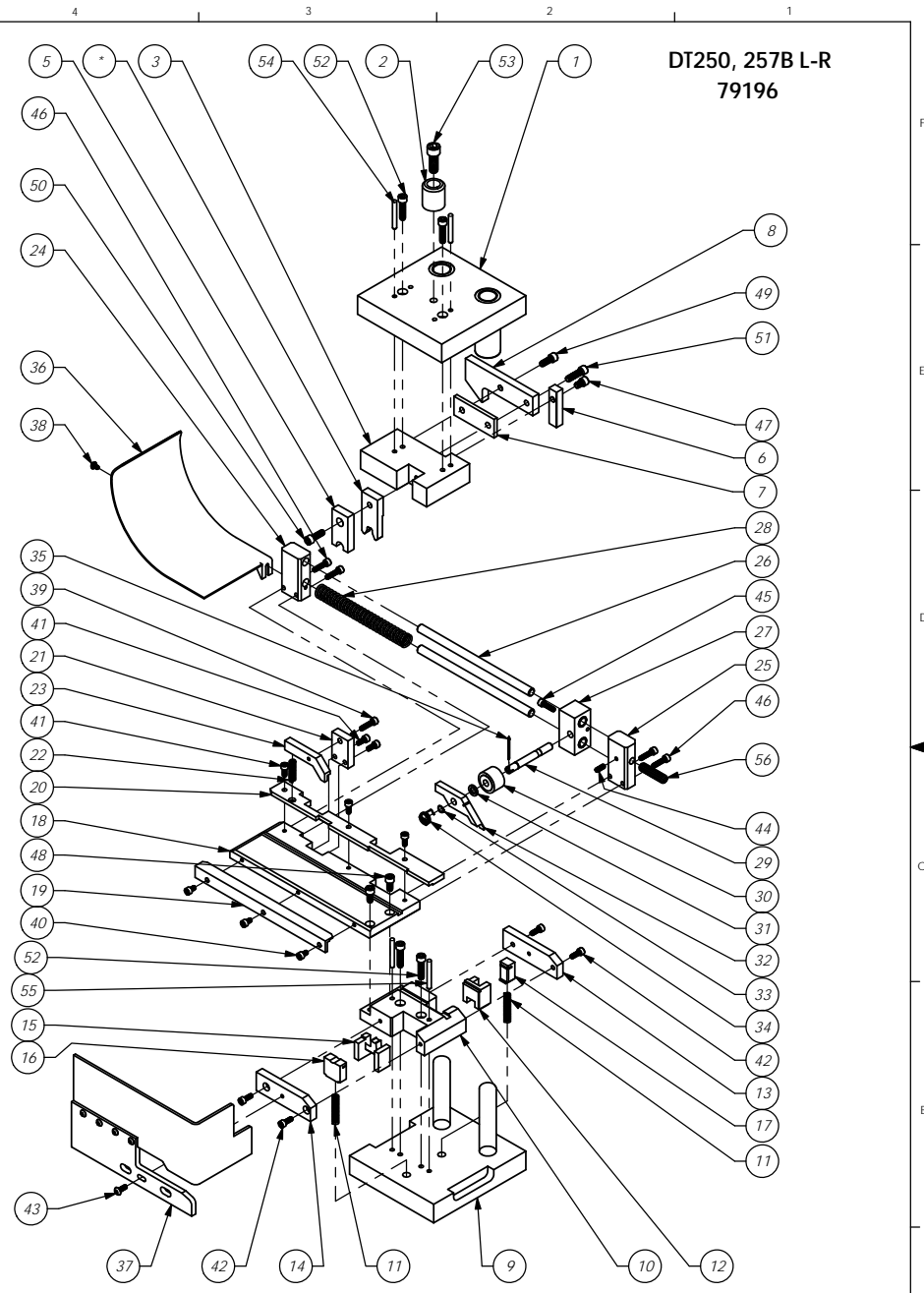


ITEM NO.	PART NUMBER	DESCRIPTION	DT275B "7mm" L-R/QTY.
1	68080-Die Hat	Die Hat	1
2	68001 - HAT SHANK	Hat Shank	1
3	68076-Tool Holder	Tool Holder	1
4	68450-Roll Tool	Roll Tool (7MM)	1
5	68007 - FRONT DRIVER	Front Driver - 8mm	1
6	68078-Rear Driver	Rear Driver	1
7	68088-Cam Spacer	Cam Spacer	1
8	68079-Cam	Cam	1
9	68610-Die Base	Die Base	1
10	68086-Die Holder	Die Holder	1
11	68012 - SPRING	Spring	2
12	68081-Rear Die	Rear Die, DT-200, DT-250 & DT-1000	1
13	68705-Front Die Cover	Front Die Cover	1
14	68704-Rear Die Cover	Rear Die Cover	1
15	68082-Anvil	Anvil	1
16	68083-Front Cutoff	Front Cutoff	1
17	68085-Rear Carrier Cutoff	Rear Carrier Cutoff	1
18	68065-Feed Plate	Feed Plate	1
19	68071-Front Stock Guide	Front Stock Guide	1
20	68068-Rear Stock Guide	Rear Stock Guide	1
21	68070-Brake Mount	Brake Mount	1
22	68020 - BRAKE SPRING	Spring	1
23	68067-Brake	Brake	1
24	68073-L-H Slide Bracket	L-H Slide Bracket	1
25	68089-RH Slide Block	RH Slide Bracket	1
26	68091-Slide Shaft	Slide Shaft	2
27	68069-Slide Block	Slide Block	1
28	68031 - SPRING	Spring	1
29	68074-Feed Finger Shaft	Feed Finger Shaft	1
30	68022 - BEARING	Bearing	1
31	68075-Feed Finger Spacer	Feed Finger Spacer	1
32	68504-Feed Finger	Feed Finger	1
33	68025 - SPRING CLIP	Spring Clip	1
34	68026 - FEED FINGER SPRING	Feed Finger Spring	1
35	Default	68090-Cotter Pin - 1/16" x 1"	1
36	68064-Chute	Chute	1
37	68093-Guard	Guard	1
38	8-32_25bh	#8-32 x 1/4" Button Hd Cap Screw	1
39	10-24_75sh	#10-24 x 3/4" Socket Hd Cap Screw	1
40	10-32_31sh	#10-32 x 5/16" Socket Hd Cap Screw	3
41	10-32_44sh	#10-32 x 7/16" Socket Hd Cap Screw	5
42	10-32_50sh	#10-32 x 1/2" Socket Hd Cap Screw	4
43	10-32_50bh	#10-32 x 1/2" Button Hd Cap Screw	1
44	10-32_50ss	#10-32 x 1/2" Socket Hd Set Screw	1
45	10-32_69sh	#10-32 x 11/16" Socket Hd Cap Screw	1
46	10-32_75sh	#10-32 x 3/4" Socket Hd Cap Screw	4
47	1.4-20_38sh	1/4-20 x 3/8" Socket Hd Cap Screw	1
48	1.4-20_50sh	1/4-20 x 1/2" Socket Hd Cap Screw	2
49	1.4-20_63sh	1/4-20 x 5/8" Socket Hd Cap Screw	1
50	1.4-20_75sh	1/4-20 x 3/4" Socket Hd Cap Screw	1
51	1.4-20_88sh	1/4-20 x 7/8" Socket Hd Cap Screw	1
52	1.4-20_1.00sh	1/4-20 x 1" Socket Hd Cap Screw	4
53	3.8-16_1.00sh	3/8-16 x 1" Socket Hd Cap Screw	1
54	3.16_1.50dp	3/16 x 1 1/2" Dowel Pin	2
55	3.16_1.5dp	3/16 x 1 1/2" Dowel Pin	2
56	3.8-16_1.50ssf	3/8-16 x 1.5" Soc Set Screw	1



DT250, 257B L-R
79196

ITEM NO.	PART NO.	DESCRIPTION	MATERIAL SPECIFICATION	QTY REQD.
See Parts List		ECO ENGINEERED PRODUCTS 25 BELLOWS STREET WARMICK RI 02888 (401)-467-2400		
DT250 "8mm" L-R Applicator				
SURFACE FINISH: ALL OVER				
REV. B	Re-ass'y from AP 7005 Rev A	2/7012	QTY.	USED ON
LVL.	REVISION	BY/DATE	SCALE	APPLICATION
			1:4	
HEAT TREAT:		FINISH:		
DRG. NO. DT250, 257B L-R		REV. B		
SCALE: 1:4		CHECKED BY: SCJ		DATE: 2/9/12
		DRAWN BY: SCJ		DATE: 2/9/12