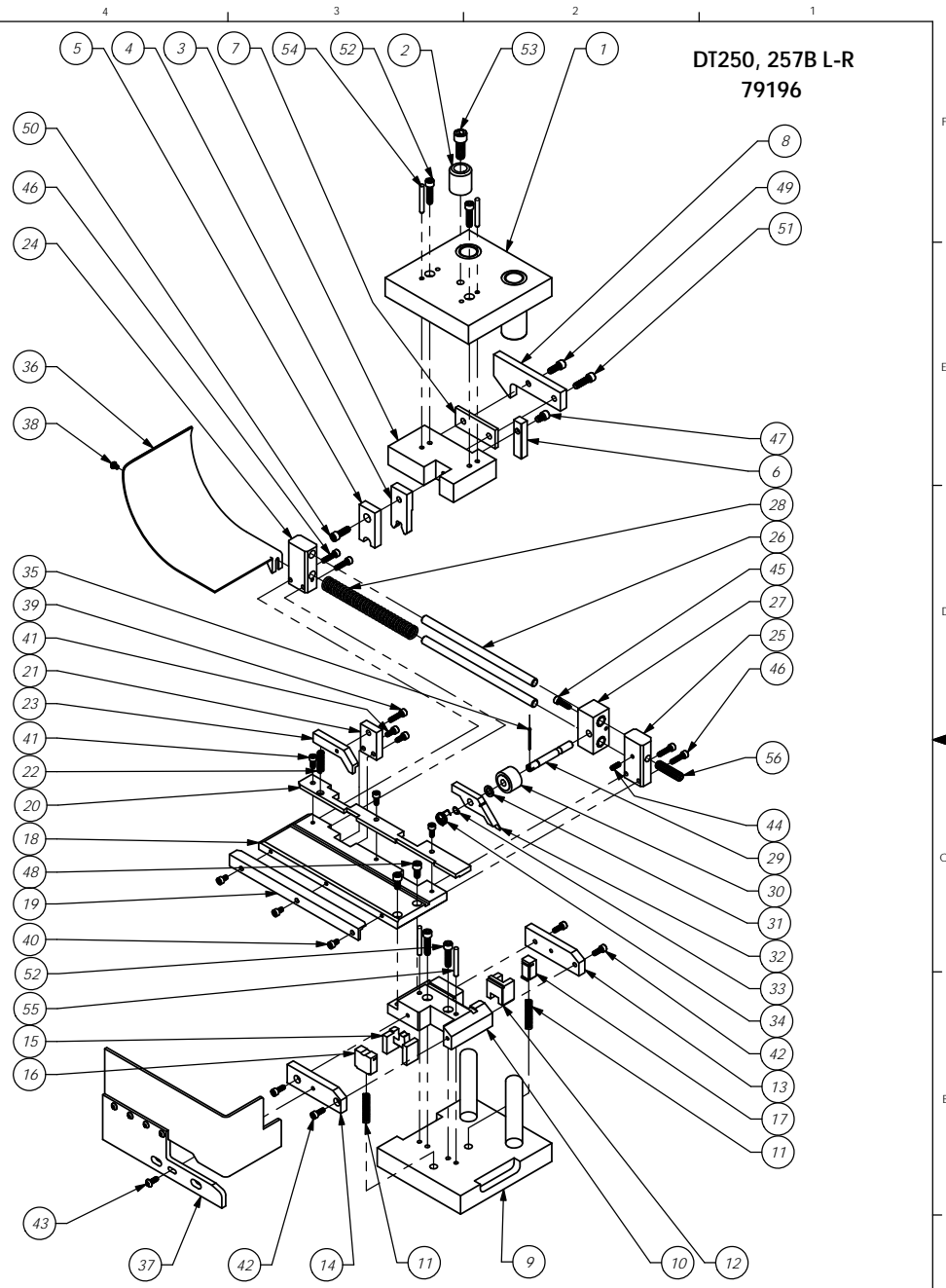


ITEM NO.	PART NUMBER	DESCRIPTION	DT275B "7mm" L-R/QTY.
1	68080-Die Hat	Die Hat	1
2	68001 - HAT SHANK	Hat Shank	1
3	68076-Tool Holder	Tool Holder	1
4	68450-Roll Tool	Roll Tool (7MM)	1
5	68007 - FRONT DRIVER	Front Driver - 8mm	1
6	68078-Rear Driver	Rear Driver	1
7	68088-Cam Spacer	Cam Spacer	1
8	68079-Cam	Cam	1
9	68610-Die Base	Die Base	1
10	68086-Die Holder	Die Holder	1
11	68012 - SPRING	Spring	2
12	68081-Rear Die	Rear Die, DT-200, DT-250 & DT-1000	1
13	68705-Front Die Cover	Front Die Cover	1
14	68704-Rear Die Cover	Rear Die Cover	1
15	68082-Anvil	Anvil	1
16	68083-Front Cutoff	Front Cutoff	1
17	68085-Rear Carrier Cutoff	Rear Carrier Cutoff	1
18	68065-Feed Plate	Feed Plate	1
19	68071-Front Stock Guide	Front Stock Guide	1
20	68068-Rear Stock Guide	Rear Stock Guide	1
21	68070-Brake Mount	Brake Mount	1
22	68020 - BRAKE SPRING	Spring	1
23	68067-Brake	Brake	1
24	68073-L-H Slide Bracket	L-H Slide Bracket	1
25	68089-RH Slide Block	RH Slide Bracket	1
26	68091-Slide Shaft	Slide Shaft	2
27	68069-Slide Block	Slide Block	1
28	68031 - SPRING	Spring	1
29	68074-Feed Finger Shaft	Feed Finger Shaft	1
30	68022 - BEARING	Bearing	1
31	68075-Feed Finger Spacer	Feed Finger Spacer	1
32	68504-Feed Finger	Feed Finger	1
33	68025 - SPRING CLIP	Spring Clip	1
34	68026 - FEED FINGER SPRING	Feed Finger Spring	1
35	Default	68090-Cotter Pin - 1/16" x 1"	1
36	68064-Chute	Chute	1
37	68093-Guard	Guard	1
38	8-32_25bh	#8-32 x 1/4" Button Hd Cap Screw	1
39	10-24_75sh	#10-24 x 3/4" Socket Hd Cap Screw	1
40	10-32_31sh	#10-32 x 5/16" Socket Hd Cap Screw	3
41	10-32_44sh	#10-32 x 7/16" Socket Hd Cap Screw	5
42	10-32_50sh	#10-32 x 1/2" Socket Hd Cap Screw	4
43	10-32_50bh	#10-32 x 1/2" Button Hd Cap Screw	1
44	10-32_50ss	#10-32 x 1/2" Socket Hd Set Screw	1
45	10-32_69sh	#10-32 x 11/16" Socket Hd Cap Screw	1
46	10-32_75sh	#10-32 x 3/4" Socket Hd Cap Screw	4
47	1.4-20_38sh	1/4-20 x 3/8" Socket Hd Cap Screw	1
48	1.4-20_50sh	1/4-20 x 1/2" Socket Hd Cap Screw	2
49	1.4-20_63sh	1/4-20 x 5/8" Socket Hd Cap Screw	1
50	1.4-20_75sh	1/4-20 x 3/4" Socket Hd Cap Screw	1
51	1.4-20_88sh	1/4-20 x 7/8" Socket Hd Cap Screw	1
52	1.4-20_1.00sh	1/4-20 x 1" Socket Hd Cap Screw	4
53	3.8-16_1.00sh	3/8-16 x 1" Socket Hd Cap Screw	1
54	3.16_1.50dp	3/16 x 1 1/2" Dowel Pin	2
55	3.16_1.5dp	3/16 x 1 1/2" Dowel Pin	2
56	3.8-16_1.50ssf	3/8-16 x 1.5" Soc Set Screw	1



DT250, 257B L-R
79196

ITEM NO.	PART No.	DESCRIPTION	MATERIAL SPECIFICATION	QTY REQD
See Parts List		PARTS LIST WECO ENGINEERED PRODUCTS 25 BELLOWS STREET WARWICK RI 02888 (401)-467-2400		
B		Re-ass'y from AP 7005 Rev A	2/7012	1
LVL		REVISION	BY/DATE	QTY USED ON APPLICATION
DO NOT SCALE DRAWING		UNLESS OTHERWISE SPECIFIED DIMENSIONS ARE IN INCHES TOLERANCES ARE: FRACTIONS DECIMALS ANGLES ±.004 .001 .01 ±.01 ±.01 ±.01		
SURFACE FINISH		ALL OVER		
THE INFORMATION CONTAINED HEREIN IS THE PROPERTY OF WECO ENGINEERED PRODUCTS AND IS TO BE USED ONLY FOR THE PURPOSES AND IN THE MANNER SPECIFIED BY WECO ENGINEERED PRODUCTS. ANY REPRODUCTION OR TRANSMISSION OF THIS INFORMATION IS PROHIBITED.		DATE: 2/9/12 CHECKED BY: SCJ DRAWN BY:		