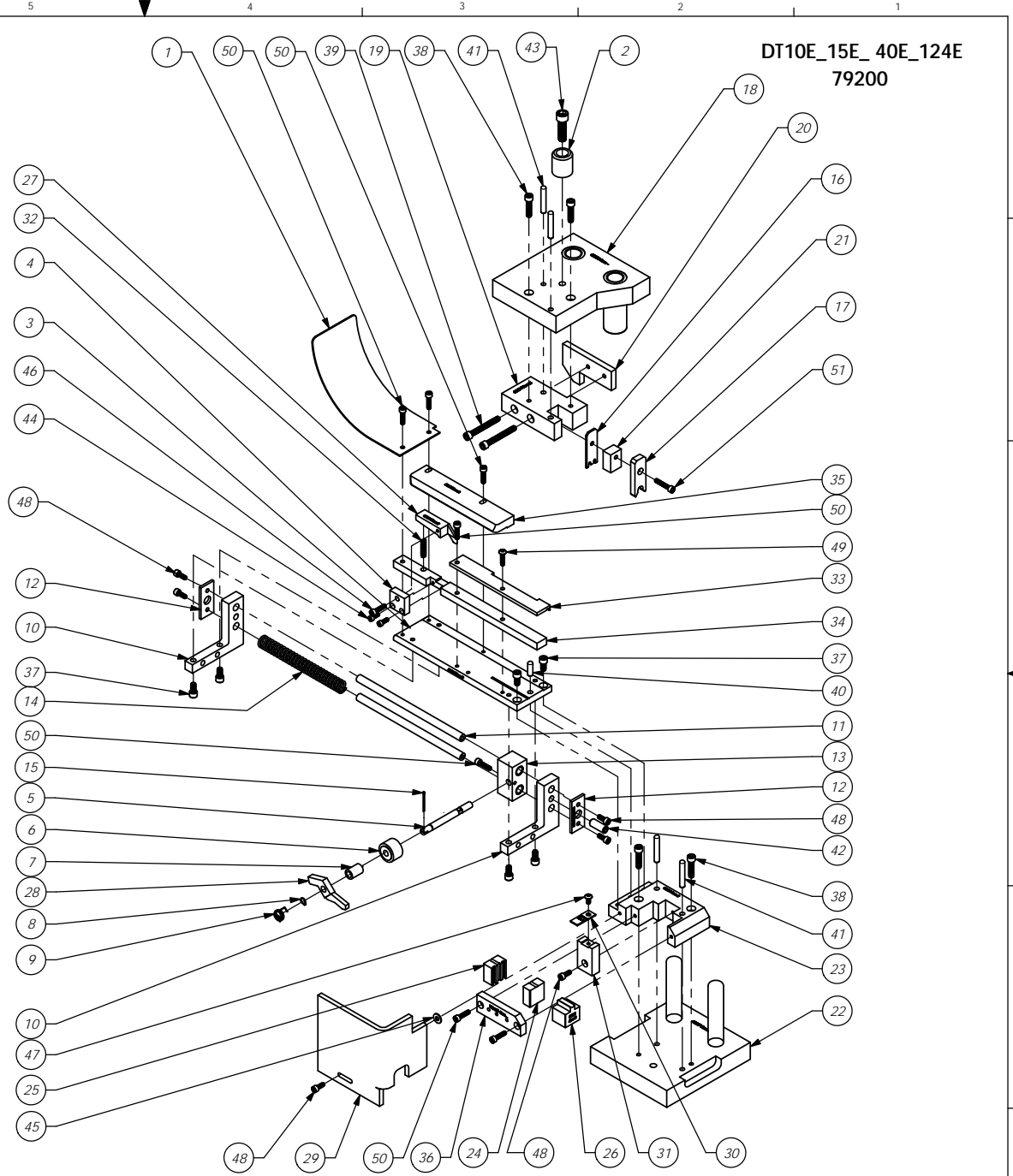


ITEM NO.	PART NUMBER	DESCRIPTION	DT10E & DT15E-WS/QTY.
1	63254-Chute	Chute	1
2	68001 - HAT SHANK	Hat Shank	1
3	68014 - DIE PLATE	Die Plate	1
4	68018 - BRAKE MOUNT	Brake Mount	1
5	68021 - FEED FINGER SHAFT	Feed Finger Shaft	1
6	68022 - BEARING	Bearing	1
7	68023 - FEED FINGER SPACER	Feed Finger Spacer	1
8	68025 - SPRING CLIP	Spring Clip	1
9	68026 - FEED FINGER SPRING	Feed Finger Spring	1
10	68027 - SLIDE BRACKET	Slide Bracket	2
11	68028 - SLIDE SHAFT	Slide Shaft	2
12	68029 - SLIDE END CAP	Slide End Cap	2
13	68030 - SLIDE BLOCK	Slide Block	1
14	68031 - SPRING	Spring	1
15	68090 - Cotter Pin	Cotter Pin - 1/16" x 1"	1
16	68132-Cut Off Punch	Cut Off Punch	1
17	68134-Roll Tool	Roll Tool	1
18	68293-Die Hat	Die Hat	1
19	68294-Tool Holder	Tool Holder	1
20	68295-Cam	Cam	1
21	68296-Spacer	Spacer	1
22	68297-Die Base	Die Base	1
23	68298-Die Holder	Die Holder	1
24	68299-Die	Die	1
25	68300-Die	Die	1
26	68301-Anvil	Anvil	1
27	68304-Brake	Brake	1
28	68305-Feed Finger	Feed Finger	1
29	68306-Guard	Guard	1
30	68307-Stripper	Stripper	1
31	68308-Stripper Mount	Stripper Mount	1
32	68331-Spring	Spring	1
33	68488-Front Guide	Front Guide	1
34	68489-Riser	Riser	1
35	68490-Guide Block	Guide Block	1
36	100445-Die Cover	Die Cover	1
37	1.4-20_50sh	1/4-20 x 1/2" Socket Hd Cap Screw	6
38	1.4-20_1.00sh	1/4-20 x 1" Socket Hd Cap Screw	4
39	1.4-20_2.00sh	1/4-20 x 2" Socket Hd Cap Screw	2
40	1.4_75dp	1/4" x 3/4" Dowel Pin	1
41	1.4_1.50dp	1/4 x 1 1/2 Dowel Pin	4
42	3.8-16_1.00ss	3/8-16 x 1" Socket Hd. Set Screw	1
43	3.8-16_1.25sh	3/8-16 x 1 1/4 Socket Hd Cap Screw	1
44	8-32_44sh	#8-32 x 7/16" Socket Hd Cap Screw	2
45	10fw-a	#10A Flatwasher	1
46	10-24_75sh	#10-24 x 3/4" Socket Hd Cap Screw	1
47	10-32_38bh	#10-32 x 3/8" Button Hd Cap Screw	1
48	10-32_50sh	#10-32 x 1/2" Socket Hd Cap Screw	6
49	10-32_75bh	#10-32 x 3/4" Button Hd Cap Screw	1
50	10-32_75sh	#10-32 x 3/4" Socket Hd Cap Screw	7
51	10-32_1.00sh	#10-32 x 1" Socket Hd Cap Screw	1



DT10E_15E_40E_124E
79200

REV. NO.	PART NO.	DESCRIPTION	MATERIAL SPECIFICATION	QTY. REQ'D
PARTS LIST				
See Parts List				
ETCO ENGINEERED PRODUCTS 25 BELLOWS STREET WARWICK, RI 02888 (401)-467-2400				
DT-10E & DT-15E-WS Applicator				
DRG. NO. DT10E_15E_40E_124E				
SCALE: 1:4				
CHECKED BY: SCJ DATE: 12-6-11				
DRAWN BY: SCJ				
DATE: 12-6-11				
SIZE: C				

LVL	REVISION	BY/DATE	QTY	USED ON	APPLICATION
E	ECR# 4922	SCJ 10/5/18			
D	Re-assy from AP 79200 Rev D	12/13/11			

DO NOT SCALE DRAWING
 UNLESS OTHERWISE SPECIFIED DIMENSIONS ARE IN INCHES. TOLERANCES ARE:
 FRACTIONS DECIMALS ANGLES
 ±1/64 .001 ±0.1
 .0005 ±0.002

SURFACE FINISH: ALL OVER