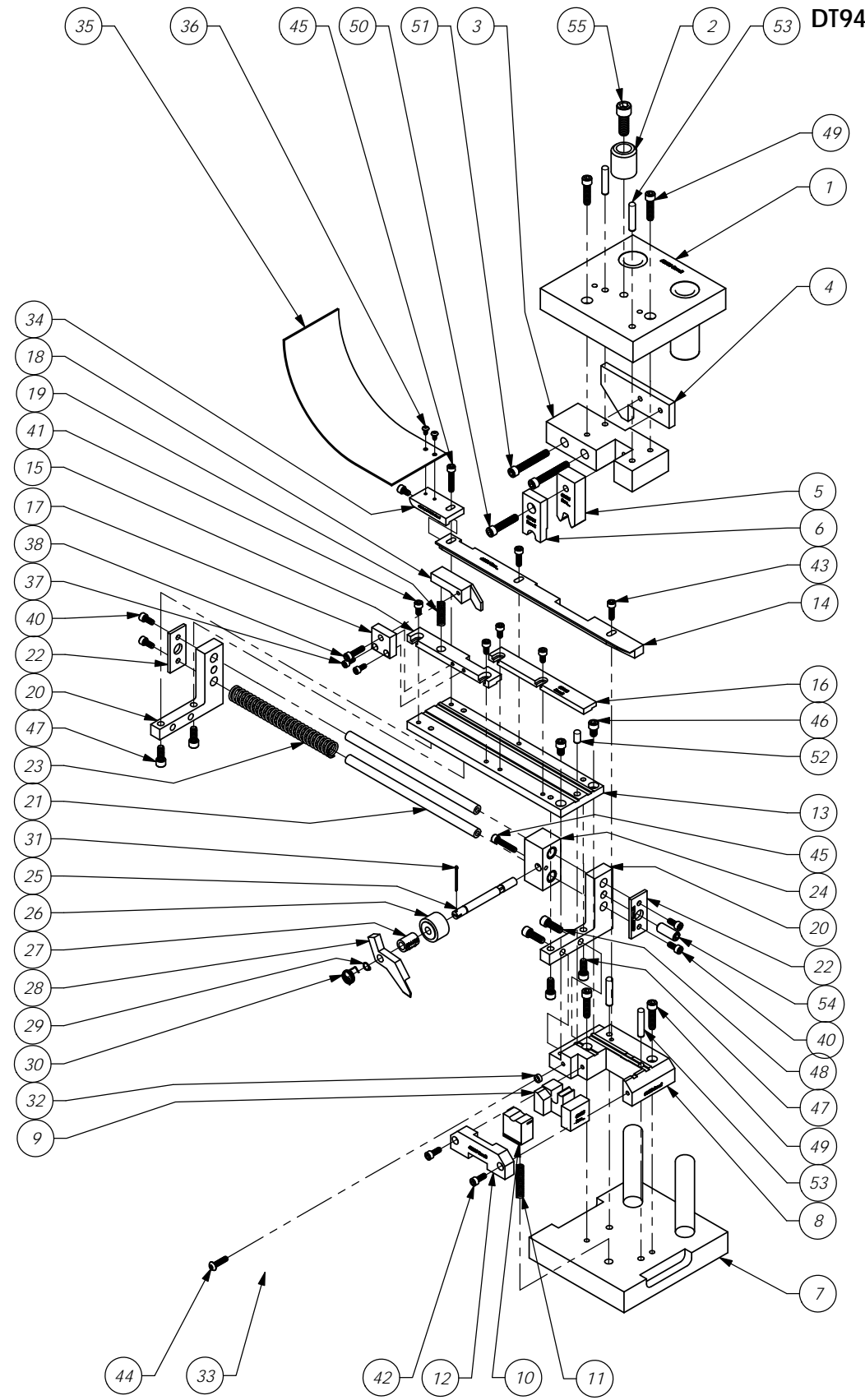


ITEM NO.	PART NUMBER	DESCRIPTION	DT985/QT Y.
1	68000 - DIE HAT	Die Hat	1
2	68001 - HAT SHANK	Hat Shank	1
3	63527-Tool Holder	Tool Holder	1
4	68540-Cam	Cam	1
5	63524-Roll Tool	Roll Tool - 7mm - 8.2 mm	1
6	68735-Front Driver	Front Driver	1
7	68008-Die Base	Die Base	1
8	63528-Die Holder	Die Holder	1
9	63525-Anvil	Anvil	1
10	68534-Carrier Cutoff	Carrier Cutoff	1
11	68012 - SPRING	Spring	1
12	68535-Die Cover	Die Cover	1
13	68536-Die Plate	Die Plate	1
14	63526-Rear Guide	63526 - Rear Guide	1
15	68537-Front Guide	Front Guide	1
16	63133-Front Guide	Front Guide	1
17	68018 - BRAKE MOUNT	Brake Mount	1
18	68019 - BRAKE	Brake	1
19	68020 - BRAKE SPRING	Spring	1
20	68027 - SLIDE BRACKET	Slide Bracket	2
21	68028 - SLIDE SHAFT	Slide Shaft	2
22	68029 - SLIDE END CAP	Slide End Cap	2
23	68031 - SPRING	Spring	1
24	68030 - SLIDE BLOCK	Slide Block	1
25	68021 - FEED FINGER SHAFT	Feed Finger Shaft	1
26	68022 - BEARING	Bearing	1
27	304-708	Feed Finger Spacer	1
28	68539-Feed Finger	Feed Finger	1
29	68025 - SPRING CLIP	Spring Clip	1
30	68026 - FEED FINGER SPRING	Feed Finger Spring	1
31	68090 - Cotter Pin	Cotter Pin - 1/16" x 1"	1
32	68035 - GUARD SPACER	Guard Spacer	1
33	62042 Safety Guard	Safety Guard Ass'y	1
34	68290 - CHUTE MOUNT	Chute Mounting Bracket	1
35	68033 - CHUTE	Chute	1
36	6-32_.25bh	#6-32 x 1/4" Button Hd Cap Screw	2
37	8-32_.38sh	#8-32 x 3/8" Socket Hd Cap Screw	2
38	10-24_.75sh	#10-24 x 3/4" Socket Hd Cap Screw	1
39	10-32_.31sh	#10-32 x 5/16" Socket Hd Cap Screw	1
40	10-32_.44sh	#10-32 x 7/16" Socket Hd Cap Screw	4
41	10-32_.38sh	#10-32 x 3/8" Socket Hd Cap Screw	4
42	10-32_.50sh	#10-32 x 1/2" Socket Hd Cap Screw	2
43	10-32_.63sh	#10-32 x 5/8" Socket Hd Cap Screw	2
44	10-32_.75bh	#10-32 x 3/4" Button Hd Cap Screw	1
45	10-32_1.00sh	#10-32 x 1" Socket Hd Cap Screw	2
46	1.4-20_.38sh	1/4-20 x 3/8" Socket Hd Cap Screw	2
47	1.4-20_.63sh	1/4-20 x 5/8" Socket Hd Cap Screw	4
48	1.4-20_.75sh	1/4-20 x 3/4" Socket Hd Cap Screw	2
49	1.4-20_1.00sh	1/4-20 x 1" Socket Hd Cap Screw	4
50	1.4-20_1.25sh	1/4-20 x 1 1/4" Socket Hd Cap Screw	1
51	1.4-20_1.75 sh	1/4-20 x 1 3/4" Socket Hd Cap Screw	2
52	1.4_.50dp	Ø 1/4" x 1/2" Dowel Pin	1
53	1.4_1.25dp	1/4 x 1 1/4 Dowel Pin	4
54	3.8-16_1.00ss	3/8-16 x 1" Socket Hd. Set Screw	1
55	3.8-16_1.00sh	3/8-16 x 1" Socket Hd Cap Screw	1



DT944, 951, 975, 985 L-R
79201

ITEM No.	PART No.	DESCRIPTION	MATERIAL SPECIFICATION	QTY	RECD
PARTS LIST					
MATERIAL: See Parts List					
HEAT TREAT:					
FINISH:					
SCALE: 1:4					
CAD FILE:					
CHECKED BY: SCJ					
DATE: 1/24/12					
DRAWN BY: SCJ					
DATE: 1/24/12					
SIZE: C					

LVL	REVISION	BY/DATE	APPLICATION
G	ECR# 5167	SCJ 7/06/18	SURFACE FINISH √ ALL OVER
F	Re-Ass'y from AP 7023 Rev E	1/23/12	USED ON

DO NOT SCALE DRAWING
UNLESS OTHERWISE SPECIFIED DIMENSIONS ARE IN INCHES. TOLERANCES ARE:
FRACTIONS DECIMALS ANGLES
±1/64 .XX ±.01 ±1/2°
XXX ±.001
XXXX ±.0002

ETCO ENGINEERED PRODUCTS
25 BELLOWS STREET
WARWICK RI 02888 (401)-467-2400

DT985 L-R Applicator

DWG. NO. DT944, 951, 975, 985 L-R
REV. G