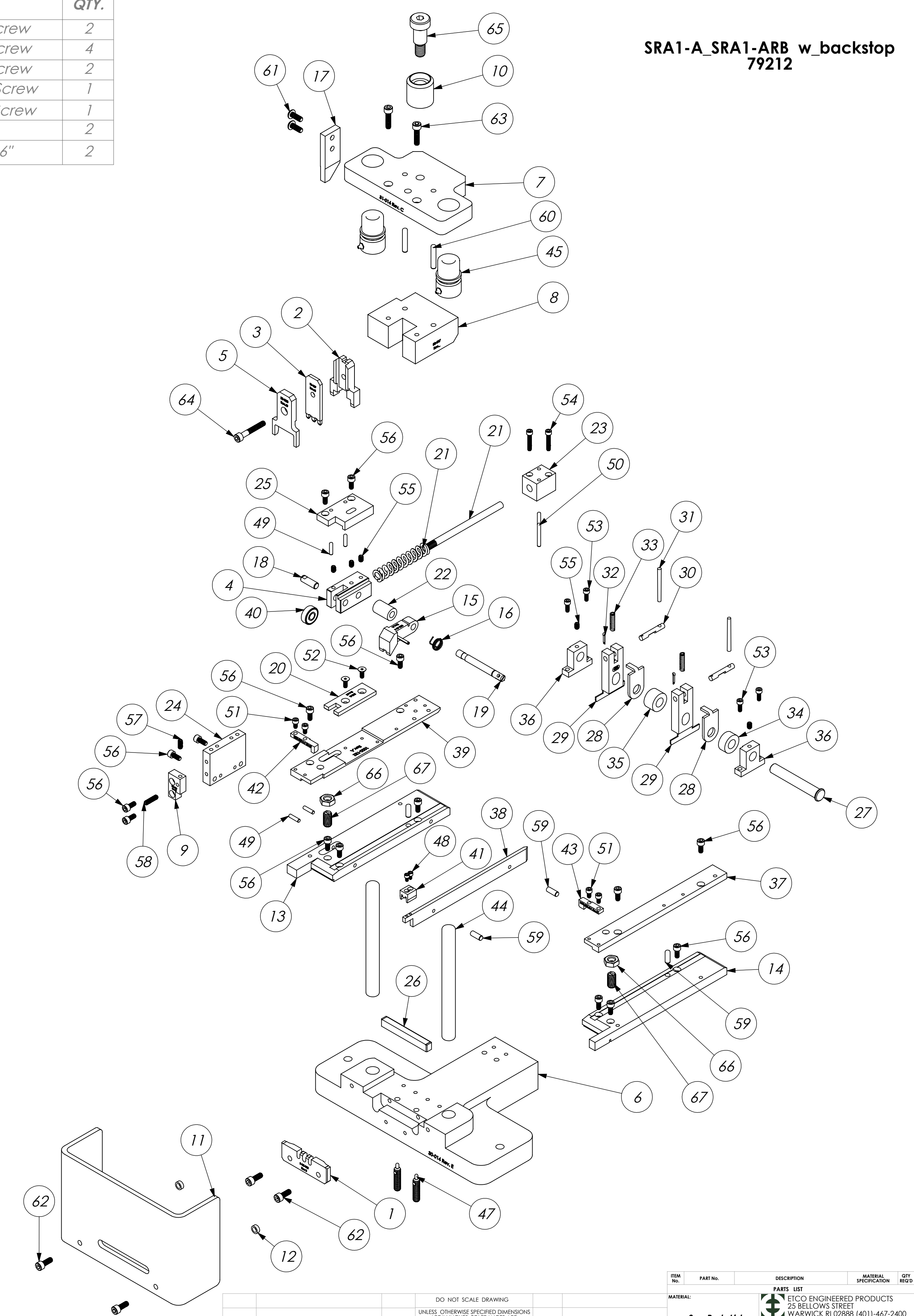


ITEM NO.	Part Code	PART NUMBER	DESCRIPTION	QTY.	ITEM NO.	Part Code	PART NUMBER	DESCRIPTION	QTY.
1	67543	9-CS-158	Anvil	1	61	76501	10-32_.50bh	#10-32 x 1/2" Button Hd Cap Screw	2
2	61665	12-109	Shear Punch	1	62	63056	10-32_.50sh	#10-32 x 1/2" Socket Hd Cap Screw	4
3	62460	13-139	Wire Rolling Tool*	1	63	63532	10-32_.75sh	#10-32 x 3/4" Socket Hd Cap Screw	2
4	60175	22-007	Slide	1	64	77396	10-32_1.25sh	#10-32 x 1 1/4" Socket Hd Cap Screw	1
5	69654	23-008	Terminal Guide	1	65	62622	1.2_.75shss	1/2" x 3/4" Socket Hd Shoulder Screw	1
6	60138	30-014	Base	1	66	100115	5.16-18jn	5/16-18 Hex Jam Nut	2
7	60030	31-014	Hat	1	67	69387	Carr Lane CL-51-SPS-2	Spring Plunger, 5/16-18 x 9/16"	2
8	60031	32-017	Tool Holder	1					
9	60182	34-008	Stop Block	1					
10	77634	CS-110	Plunger Shank	1					
11	69355	199-1	Guard	1					
12	63675	199S-125	Guard Spacer	2					
13	69314	250-269	Die Plate	1					
14	60172	250-270	Die Plate	1					
15	63804	303-41-3	Feed Finger	1					
16	69591	307-54	Feed finger spring	1					
17	69205	314-119-1	Cam	1					
18	60179	337-2	Pin	1					
19	67609	337-8	Pin	1					
20	74860	338-2	Slide plate	1					
21	60174	339-1	Spring Shaft	1					
22	69650	340-765	Spacer	1					
23	60173	341-3	Spring Block	1					
24	60180	342-3	Mount	1					
25	60181	342-4-1	Cover	1					
26	69652	346-2	Plunger	1					
27	74495	401-Finished	Brake Shaft	1					
28	74496	402	Spring Retainer	2					
29	70132	403-98	Brake Body	2					
30	74673	404	Brake Cam	2					
31	74674	405	Taper Pin	2					
32	74675	406	Cotter Pin	3					
33	74676	407	Brake Spring	2					
34	60845	408-.330	Spacer	1					
35	60846	408-.450	Spacer	1					
36	74878	435-1-A	Brake mount	2					
37	69303	500-245	Rear Guide	1					
38	69443	500-246-1	Center Guide	1					
39	69315	1000-132	Front Guide	1					
40	75719	1142	Cam Roller Bearing	1					
41	69420	1600-BS	Back Stop	1					
42	69283	1600-SRA-L-1	Left Wire Stripper	1					
43	69655	1600-SRA-R-1	Wire Stripper	1					
44	78650	Lempco#501-0420	Guide Post	2					
45	78651	Lempco #661-0406	Bushing, Short Shoulder	2					
46	74853	M113x2.500	Spring	1					
47	69620	Vlier #S-54N	Spring Plunger	2					
48	100116	4-40_.19sh	#4-40 x 3/16" Socket Hd Cap Screw	2					
49	63507	1.8_.50dp	Ø 1/8" x 1/2" Dowel	4					
50	62849	1.8_1.00dp	1/8" x 1" Dowel	2					
51	63207	6-32_.25sh	#6-32 x 1/4" Socket Hd Cap Screw	4					
52	100117	6-32_.38fh	#6-32 x 3/8" Flat Hd Cap Screw	2					
53	63209	6-32_.38sh	#6-32 x 3/8" Socket Hd Cap Screw	4					
54	69493	6-32_.75sh	#6-32 x 3/4" Socket Hd Cap Screw	2					
55	62472	8-32_.25ssf	#8-32 x 1/4" Socket Hd Set Screw	5					
56	63161	8-32_.38sh	#8-32 x 3/8" Socket Hd Cap Screw	16					
57	100118	8-32_.38ssf	#8-32 x 3/8" Socket Hd Set Screw	1					
58	60452	8-32_.63ssf	#8-32 x 5/8" Socket Hd Set Screw	1					
59	63158	3.16_.50dp	Ø 3/16" x 1/2" Dowel Pin	4					
60	62010	3.16_1.00dp	3/16" x 1" Dowel Pin	2					

Note:
1) Items marked in "**Bold Italic**" = High wear tooling.
2) Use OEM replacement tooling only.



ITEM NO.	PART No.	DESCRIPTION	MATERIAL SPECIFICATION	QTY REQD																														
DO NOT SCALE DRAWING UNLESS OTHERWISE SPECIFIED DIMENSIONS ARE IN INCHES. TOLERANCES ARE: FRACTIONS DECIMALS ANGLES ±.004 .001 .01 XXX .002 2 1/2° XXXXX.0002																																		
SURFACE FINISH: ALL OVER																																		
THE INFORMATION CONTAINED WITHIN THIS DRAWING IS THE SOLE PROPERTY OF ETCS. NO REPRODUCTION OR TRANSMISSION OF ANY PART OF THIS DRAWING OR OF WHOLE OR PART THEREOF IS PERMITTED WITHOUT THE WRITTEN PERMISSION OF ETCS INCORPORATED & PROVIDED.																																		
B 69303 was 61343 per CG SCJ		1009/15																																
A 63804 was 60308 (dup.) SCJ		1/28/13																																
LVL	REVISION	BY/DATE	APPLICATION	SCALE: 1:2.5																														
<table border="1"> <thead> <tr> <th>ITEM NO.</th> <th>PART No.</th> <th>DESCRIPTION</th> <th>MATERIAL SPECIFICATION</th> <th>QTY REQD</th> </tr> </thead> <tbody> <tr> <td colspan="5">See Parts List</td> </tr> <tr> <td colspan="5">SRA1-A_SRA1-ARB w_backstop</td> </tr> <tr> <td colspan="5">SRA1-A_SRA1-ARB.SLDASM W_backstop</td> </tr> <tr> <td>QTY</td> <td>USED ON</td> <td>CAD FILE</td> <td>DATE</td> <td>REV</td> </tr> <tr> <td></td> <td></td> <td></td> <td>18Sep02</td> <td>D</td> </tr> </tbody> </table>					ITEM NO.	PART No.	DESCRIPTION	MATERIAL SPECIFICATION	QTY REQD	See Parts List					SRA1-A_SRA1-ARB w_backstop					SRA1-A_SRA1-ARB.SLDASM W_backstop					QTY	USED ON	CAD FILE	DATE	REV				18Sep02	D
ITEM NO.	PART No.	DESCRIPTION	MATERIAL SPECIFICATION	QTY REQD																														
See Parts List																																		
SRA1-A_SRA1-ARB w_backstop																																		
SRA1-A_SRA1-ARB.SLDASM W_backstop																																		
QTY	USED ON	CAD FILE	DATE	REV																														
			18Sep02	D																														