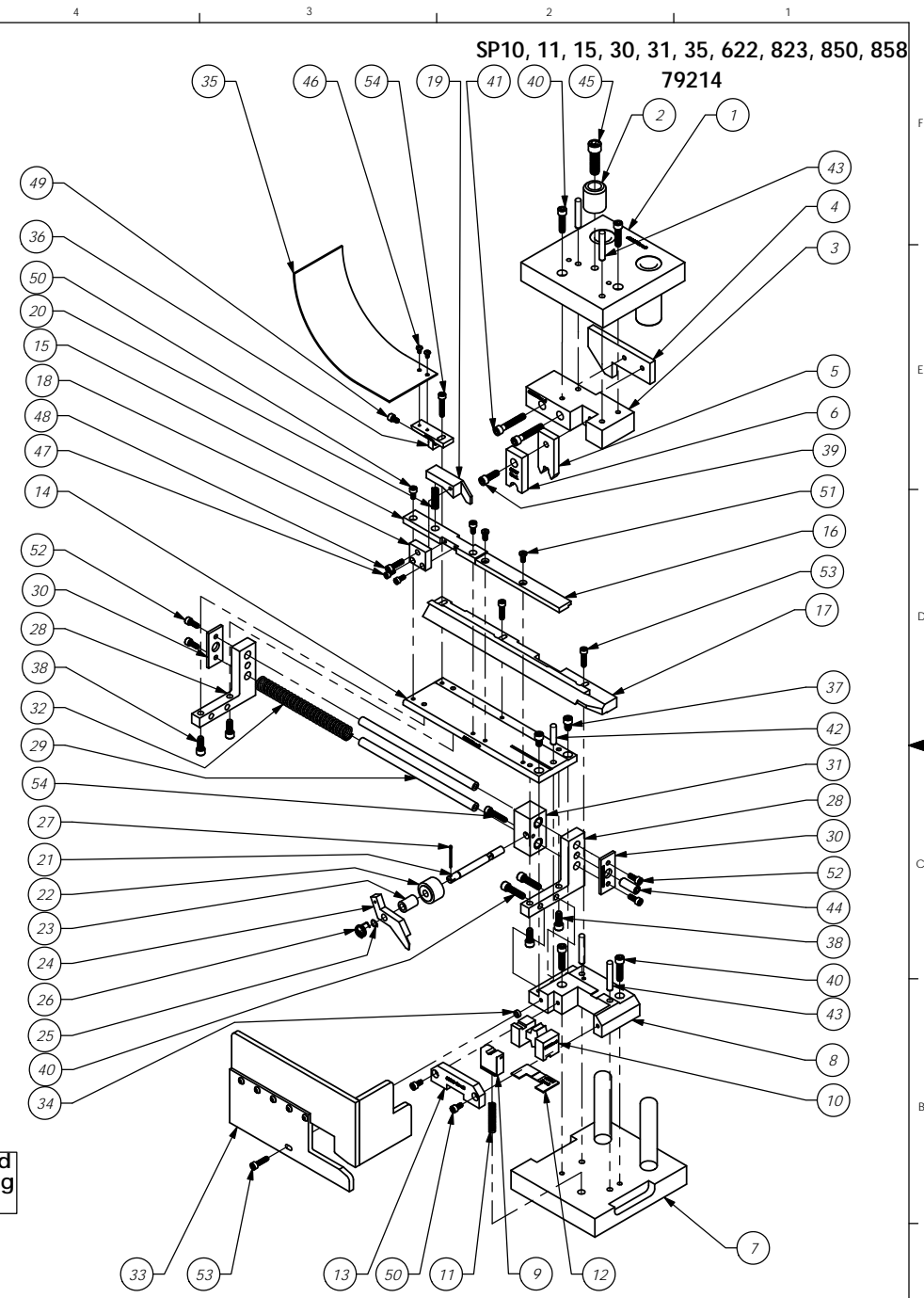


ITEM NO.	PART NUMBER	DESCRIPTION	SP10-135/QTY.
1	68000 - DIE HAT	Die Hat	1
2	68001 - HAT SHANK	Hat Shank	1
3	68002 - TOOL HOLDER	Tool Holder	1
4	68003- CAM	CAM	1
5	68005 - ROLL TOOL	Roll Tool	1
6	68007 - FRONT DRIVER	Front Driver - 8mm	1
7	68008-Die Base	Die Base	1
8	68009 - DIE HOLDER	Die Holder	1
9	68011 - CARRIER CUT-OFF	Carrier Cut-Off	1
10	68010 - ANVIL	Anvil	1
11	68012 - SPRING	Spring	1
12	68034 - SPACER	Spacer	1
13	68013 - DIE COVER	Die Cover	1
14	68014 - DIE PLATE	Die Plate	1
15	68015 - FRONT GUIDE	Front Guide	1
16	68016 - FRONT GUIDE	Front Guide	1
17	68036 - SP-11-135 REAR RAIL	Rear Rail	1
18	68018 - BRAKE MOUNT	Brake Mount	1
19	68019 - BRAKE	Brake	1
20	68020 - BRAKE SPRING	Spring	1
21	68021 - FEED FINGER SHAFT	Feed Finger Shaft	1
22	68022 - BEARING	Bearing	1
23	68023 - FEED FINGER SPACER	Feed Finger Spacer	1
24	68024 - FEED FINGER	Feed Finger	1
25	68025 - SPRING CLIP	Spring Clip	1
26	68026 - FEED FINGER SPRING	Feed Finger Spring	1
27	68090 - Cotter Pin	Cotter Pin - 1/16" x 1"	1
28	68027 - SLIDE BRACKET	Slide Bracket	2
29	68028 - SLIDE SHAFT	Slide Shaft	2
30	68029 - SLIDE END CAP	Slide End Cap	2
31	68030 - SLIDE BLOCK	Slide Block	1
32	68031 - SPRING	Spring	1
33	68032-Guard	Guard	1
34	68035 - GUARD SPACER	Guard Spacer	1
35	68033 - CHUTE	Chute	1
36	63461 - CHUTE MOUNT	Chute Mounting Bracket	1
37	1.4-20_38sh	1/4-20 x 3/8" Socket Hd Cap Screw	2
38	1.4-20_63sh	1/4-20 x 5/8" Socket Hd Cap Screw	4
39	1.4-20_75sh	1/4-20 x 3/4" Socket Hd Cap Screw	1
40	1.4-20_1.00sh	1/4-20 x 1" Socket Hd Cap Screw	6
41	1.4-20_1.50sh	1/4-20 x 1-1/2" Socket Hd Cap Screw	2
42	1.4_1.00dp	1/4 x 1" Dowel Pin	1
43	1.4_1.50dp	1/4 x 1 1/2" Dowel Pin	4
44	3.8-16_1.00ss	3/8-16 x 1" Socket Hd. Set Screw	1
45	3.8-16_1.25sh	3/8-16 x 1 1/4" Socket Hd Cap Screw	1
46	6-32_25bh	#6-32 x 1/4" Button Hd Cap Screw	2
47	8-32_38sh	#8-32 x 3/8" Socket Hd Cap Screw	2
48	10-24_75sh	#10-24 x 3/4" Socket Hd Cap Screw	1
49	10-32_31sh	#10-32 x 5/16" Socket Hd Cap Screw	1
50	10-32_38sh	#10-32 x 3/8" Socket Hd Cap Screw	4
51	10-32_38lh	#10-32 x 3/8" Low Hd Cap Screw	2
52	10-32_50sh	#10-32 x 1/2" Socket Hd Cap Screw	4
53	10-32_75sh	#10-32 x 3/4" Socket Hd Cap Screw	3
54	10-32_1.00sh	#10-32 x 1" Socket Hd Cap Screw	2

Approved
For Tooling
1/12/18



REV. NO.	PART NO.	DESCRIPTION	MATERIAL SPECIFICATION	QTY. REQ'D
		DO NOT SCALE DRAWING		
		UNLESS OTHERWISE SPECIFIED DIMENSIONS ARE IN INCHES. TOLERANCES ARE: FRACTIONS: DECIMALS: ANGLES: 1/164 XX ±.01 XXX ±.01 XXXX ±.0002		
F	ECR# 4936 SCJ	3/2/18	SURFACE FINISH: <input checked="" type="checkbox"/> ALL OVER	
E	Re-assy from AP 7001 Rev D	8/6/12		
LVL	REVISION	BY/DATE	QTY.	USED ON
				APPLICATION
			SCALE: 1:4	CAD FILE
			CHECKED BY: SCJ	DATE: 1/4/12
			DRAWN BY: SCJ	DATE: 1/4/12
				SIZE: C

See Parts List

ETCO ENGINEERED PRODUCTS
25 BELLOWS STREET
WARWICK, RI 02886 (401)-467-2400

SP10-135 Applicator

DWG. NO. SP10, 11, 15, 30, 31, 35, 622, 823, 850, 858