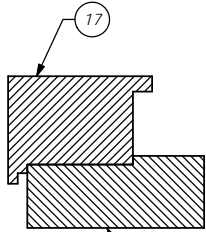
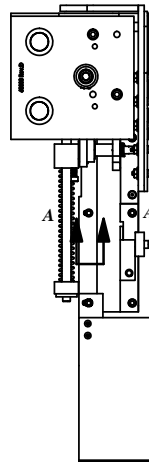


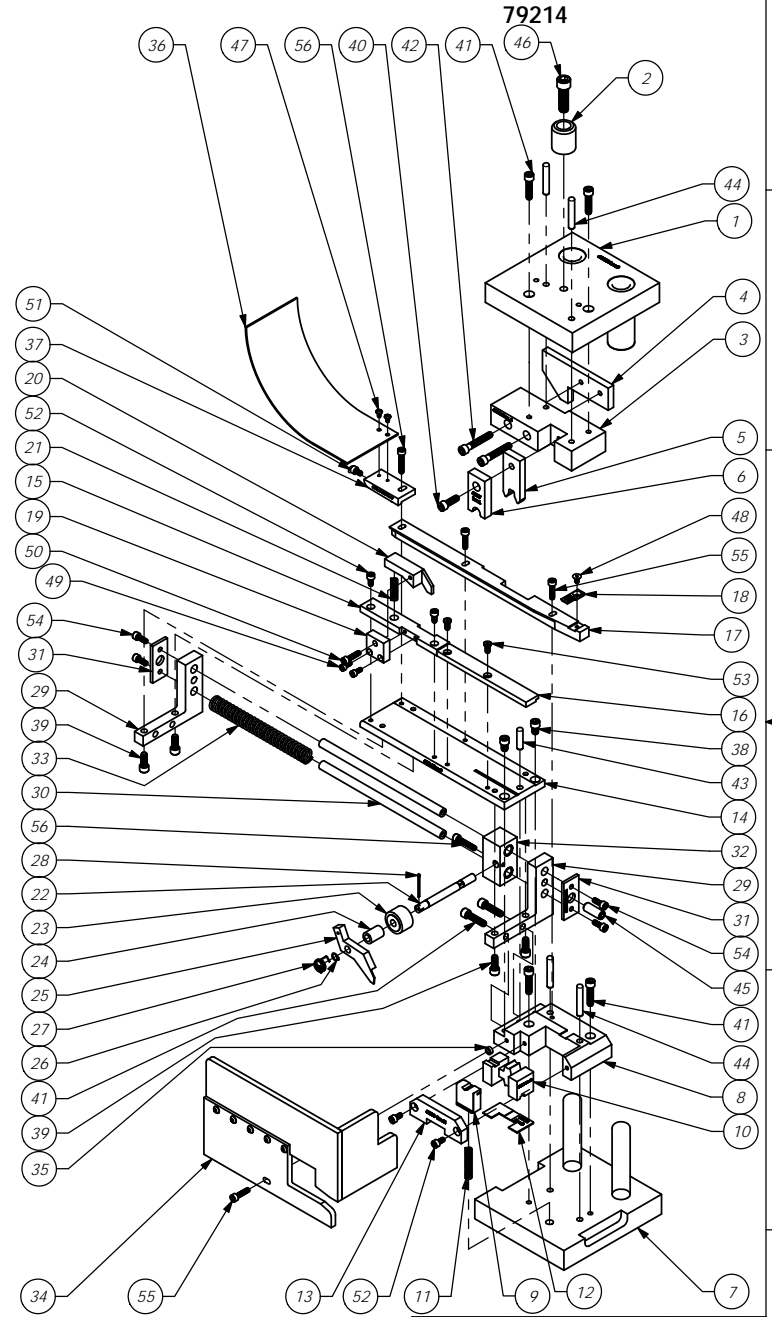
ITEM NO.	PART NUMBER	DESCRIPTION	SP11 and SP15/QTY.
1	68000 - DIE HAT	Die Hat	1
2	68001 - HAT SHANK	Hat Shank	1
3	68002 - TOOL HOLDER	Tool Holder	1
4	68003- CAM	CAM	1
5	68006 - ROLL TOOL	Roll Toll	1
6	68007 - FRONT DRIVER	Front Driver - 8mm	1
7	68008-Die Base	Die Base	1
8	68009 - DIE HOLDER	Die Holder	1
9	68011 - CARRIER CUT-OFF	Carrier Cut-Off	1
10	68010 - ANVIL	Anvil	1
11	68012 - SPRING	Spring	1
12	68034 - SPACER	Spacer	1
13	68013 - DIE COVER	Die Cover	1
14	68014 - DIE PLATE	Die Plate	1
15	68015 - FRONT GUIDE	Front Guide	1
16	68016 - FRONT GUIDE	Front Guide	1
17	68017 - REAR GUIDE	Rear Guide	1
18	68448 - REAR GUIDE INSERT	Rear Guide Insert	1
19	68018 - BRAKE MOUNT	Brake Mount	1
20	68019 - BRAKE	Brake	1
21	68020 - BRAKE SPRING	Spring	1
22	68021 - FEED FINGER SHAFT	Feed Finger Shaft	1
23	68022 - BEARING	Bearing	1
24	68023 - FEED FINGER SPACER	Feed Finger Spacer	1
25	68024 - FEED FINGER	Feed Finger	1
26	68025 - SPRING CLIP	Spring Clip	1
27	68026 - FEED FINGER SPRING	Feed Finger Spring	1
28	68090 - Cotter Pin	Cotter Pin - 1/16" x 1"	1
29	68027 - SLIDE BRACKET	Slide Bracket	2
30	68028 - SLIDE SHAFT	Slide Shaft	2
31	68029 - SLIDE END CAP	Slide End Cap	2
32	68030 - SLIDE BLOCK	Slide Block	1
33	68031 - SPRING	Spring	1
34	68032-Guard	Guard	1
35	68035 - GUARD SPACER	Guard Spacer	1
36	68033 - CHUTE	Chute	1
37	68290 - CHUTE MOUNT	Chute Mounting Bracket	1
38	1.4-20_.38sh	1/4-20 x 3/8" Socket Hd Cap Screw	2
39	1.4-20_.63sh	1/4-20 x 5/8" Socket Hd Cap Screw	4
40	1.4-20_.75sh	1/4-20 x 3/4" Socket Hd Cap Screw	1
41	1.4-20_1.00sh	1/4-20 x 1" Socket Hd Cap Screw	6
42	1.4-20_1.50sh	1/4-20 x 1-1/2" Socket Hd Cap Screw	2
43	1.4_1.00dp	1/4 x 1" Dowel Pin	1
44	1.4_1.50dp	1/4 x 1 1/2 Dowel Pin	4
45	3.8-16_1.00ss	3/8-16 x 1" Socket Hd. Set Screw	1
46	3.8-16_1.25sh	3/8-16 x 1 1/4 Socket Hd Cap Screw	1
47	6-32_.25bh	#6-32 x 1/4" Button Hd Cap Screw	2
48	8-32_.31fh	#8-32 x 5/16" Flat Head Socket Screw	1
49	8-32_.38sh	#8-32 x 3/8" Socket Hd Cap Screw	2
50	10-24_.75sh	#10-24 x 3/4" Socket Hd Cap Screw	1
51	10-32_.31sh	#10-32 x 5/16" Socket Hd Cap Screw	1
52	10-32_.38sh	#10-32 x 3/8" Socket Hd Cap Screw	4
53	10-32_.38lh	#10-32 x 3/8" Low Hd Cap Screw	2
54	10-32_.50sh	#10-32 x 1/2" Socket Hd Cap Screw	4
55	10-32_.75sh	#10-32 x 3/4" Socket Hd Cap Screw	3
56	10-32_1.00sh	#10-32 x 1" Socket Hd Cap Screw	2

Approved  
For Tooling  
1/12/18



Seat 68017-Rear Guide as such  
to 68014-Die Plate

SP10, 11, 15, 30, 31, 35, 622, 823, 850, 858



REV. NO.	PART NO.	DESCRIPTION	MATERIAL SPECIFICATION	QTY. REQ'D.
F	ECR# 4936	SCJ	3/2/18	
E	Re-assy from AP 7001	Rev D	10/12	
LVL	REVISION	BY/DATE	APPLICATION	SCALE

PARTS LIST		MATERIAL SPECIFICATION	
See Parts List		ETCO ENGINEERED PRODUCTS 25 BELLOWS STREET WARWICK, RI 02886 (401)-467-2400	
SURFACE FINISH: <input checked="" type="checkbox"/> ALL OVER		UNLESS OTHERWISE SPECIFIED DIMENSIONS ARE IN INCHES. TOLERANCES ARE: FRACTIONS: DECIMALS: ANGLES: #1/64 XX ±.01 ±1/8° XXXX ±.002	
QTY.	USED ON	DRG. NO.	DATE
		SP10, 11, 15, 30, 31, 35, 622, 823, 850, 858	1/4/12
SCALE: 1:4	CAD FILE:	CHECKED BY:	DRAWN BY:
		SCJ	