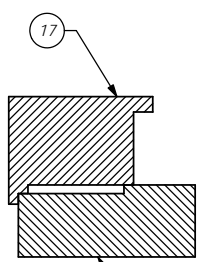
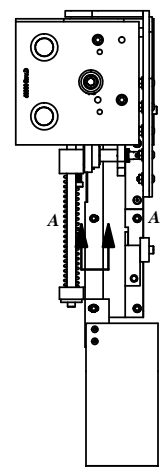


ITEM NO.	PART NUMBER	DESCRIPTION	SP622 and SP850/SP850/QTY
1	68000 - DIE HAT	Die Hat	1
2	68001 - HAT SHANK	Hat Shank	1
3	68002 - TOOL HOLDER	Tool Holder	1
4	68003- CAM	CAM	1
5	68005 - ROLL TOOL	Roll Tool	1
6	68007 - FRONT DRIVER	Front Driver - 8mm	1
7	68008-Die Base	Die Base	1
8	68009 - DIE HOLDER	Die Holder	1
9	68011 - CARRIER CUT-OFF	Carrier Cut-Off	1
10	68010 - ANVIL	Anvil	1
11	68012 - SPRING	Spring	1
12	68034 - SPACER	Spacer	1
13	68013 - DIE COVER	Die Cover	1
14	68014 - DIE PLATE	Die Plate	1
15	68015 - FRONT GUIDE	Front Guide	1
16	68016 - FRONT GUIDE	Front Guide	1
17	68017 - REAR GUIDE	Rear Guide	1
18	68448 - REAR GUIDE INSERT	Rear Guide Insert	1
19	68018 - BRAKE MOUNT	Brake Mount	1
20	68019 - BRAKE	Brake	1
21	68020 - BRAKE SPRING	Spring	1
22	68021 - FEED FINGER SHAFT	Feed Finger Shaft	1
23	68022 - BEARING	Bearing	1
24	68023 - FEED FINGER SPACER	Feed Finger Spacer	1
25	68024 - FEED FINGER	Feed Finger	1
26	68025 - SPRING CLIP	Spring Clip	1
27	68026 - FEED FINGER SPRING	Feed Finger Spring	1
28	68090 - Cotter Pin	Cotter Pin - 1/16" x 1"	1
29	68027 - SLIDE BRACKET	Slide Bracket	2
30	68028 - SLIDE SHAFT	Slide Shaft	2
31	68029 - SLIDE END CAP	Slide End Cap	2
32	68030 - SLIDE BLOCK	Slide Block	1
33	68031 - SPRING	Spring	1
34	68032-Guard	Guard	1
35	68035 - GUARD SPACER	Guard Spacer	1
36	68033 - CHUTE	Chute	1
37	68290 - CHUTE MOUNT	Chute Mounting Bracket	1
38	1.4-20_.38sh	1/4-20 x 3/8" Socket Hd Cap Screw	2
39	1.4-20_.63sh	1/4-20 x 5/8" Socket Hd Cap Screw	4
40	1.4-20_.75sh	1/4-20 x 3/4" Socket Hd Cap Screw	1
41	1.4-20_1.00sh	1/4-20 x 1" Socket Hd Cap Screw	6
42	1.4-20_1.50sh	1/4-20 x 1 1/2" Socket Hd Cap Screw	2
43	1.4_1.00dp	1/4 x 1" Dowel Pin	1
44	1.4_1.50dp	1/4 x 1 1/2 Dowel Pin	4
45	3.8-16_1.00ss	3/8-16 x 1" Socket Hd. Set Screw	1
46	3.8-16_1.25sh	3/8-16 x 1 1/4 Socket Hd Cap Screw	1
47	6-32_.25bh	#6-32 x 1/4" Button Hd Cap Screw	2
48	8-32_.31fh	#8-32 x 5/16" Flat Head Socket Screw	1
49	8-32_.38sh	#8-32 x 3/8" Socket Hd Cap Screw	2
50	10-24_.75sh	#10-24 x 3/4" Socket Hd Cap Screw	1
51	10-32_.31sh	#10-32 x 5/16" Socket Hd Cap Screw	1
52	10-32_.38sh	#10-32 x 3/8" Socket Hd Cap Screw	4
53	10-32_.38lh	#10-32 x 3/8" Low Hd Cap Screw	2
54	10-32_.50sh	#10-32 x 1/2" Socket Hd Cap Screw	4
55	10-32_.75sh	#10-32 x 3/4" Socket Hd Cap Screw	3
56	10-32_1.00sh	#10-32 x 1" Socket Hd Cap Screw	2

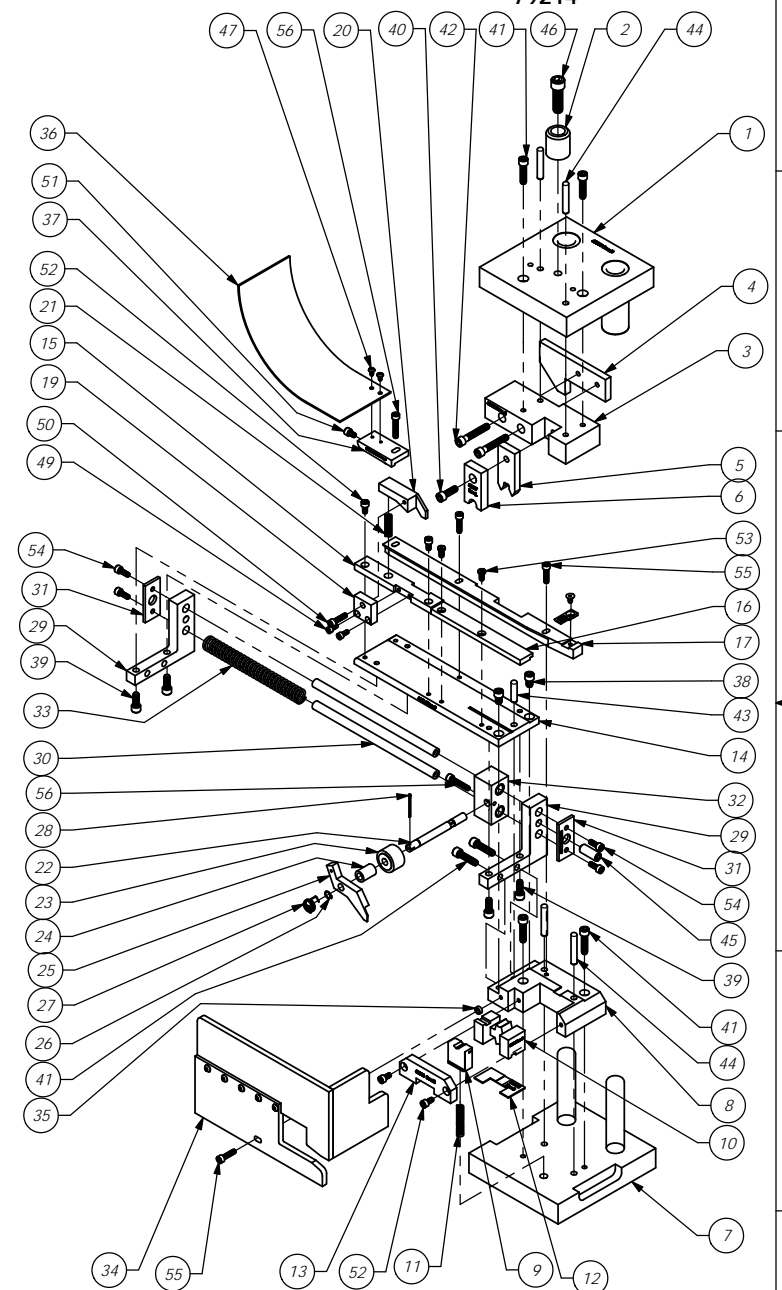
Approved For Tooling 1/12/18



Seat 68017-Rear Guide as such to 68014-Die Plate

SP10, 11, 15, 30, 31, 35, 622, 823, 850, 858

79214



REV	NO.	PART NO.	DESCRIPTION	MATERIAL SPECIFICATION	QTY	RECD
			DO NOT SCALE DRAWING			
			UNLESS OTHERWISE SPECIFIED DIMENSIONS ARE IN INCHES. TOLERANCES ARE: FRACTIONS DECIMALS ANGLES ±1/64 .001 ±0.1 XXXX ±.002			
F		ECR# 4936 SCJ	3/2/18	SURFACE FINISH ALL OVER		
E		Re-assy from AP 7001 Rev D	8/6/12		QTY	USED ON
LVL		REVISION	BY/DATE	APPLICATION	SCALE	CAD FILE
					1:4	

ITEM NO.	PART NO.	DESCRIPTION	MATERIAL	QTY
		See Parts List		
		ETCO ENGINEERED PRODUCTS 25 BELLOWS STREET WARWICK, RI 02886 (401)-467-2400		
		SP622 and SP850 Applicator		
		DRG. NO. SP10, 11, 15, 30, 31, 35, 622, 823, 850, 858		
		CHECKED BY: SCJ DATE: 1/4/12		