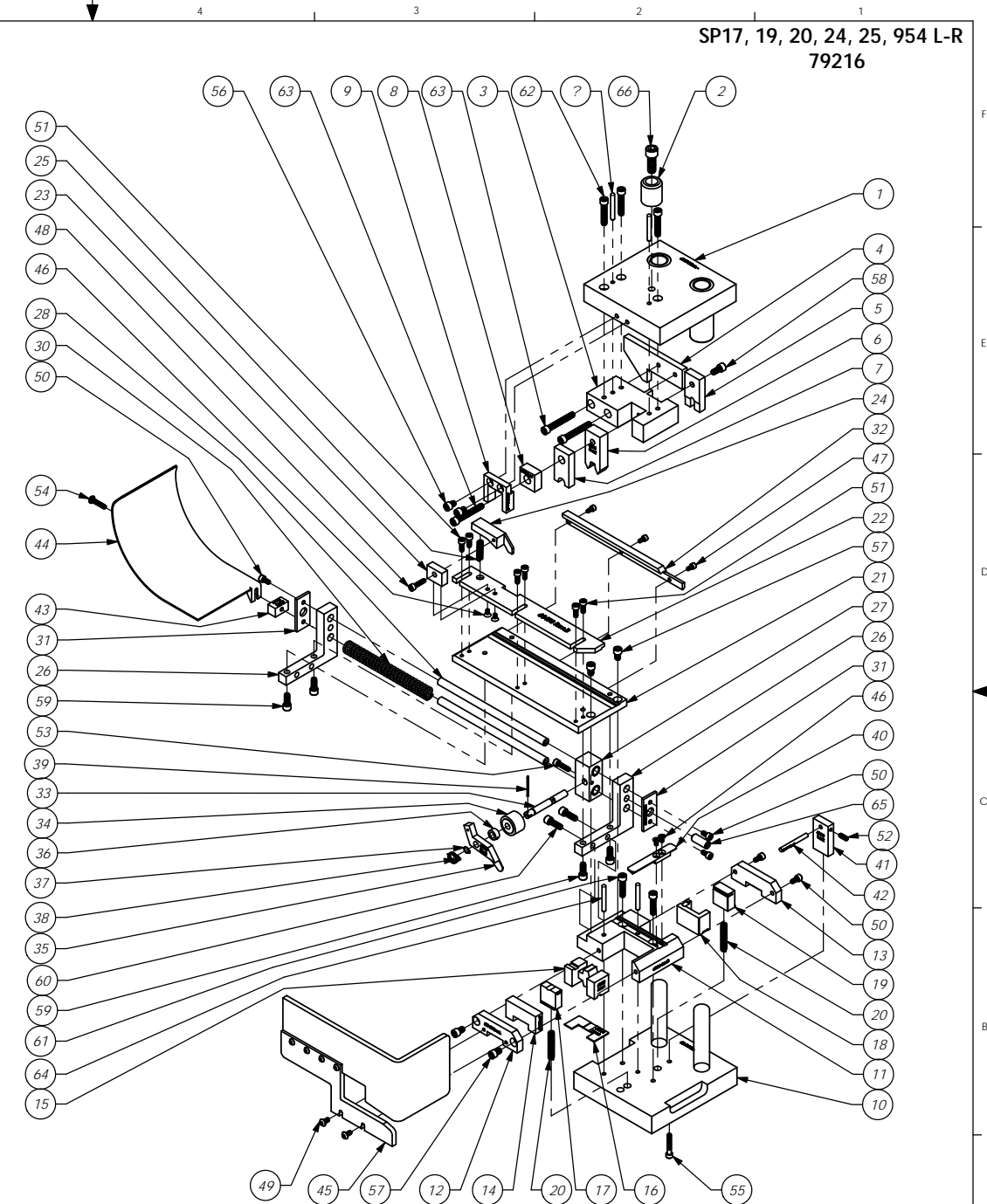


ITEM NO.	PART NUMBER	Part_Code	DESCRIPTION	SP19/QTY.
1	68494-Die Hat	AP 70607	Die Hat	1
2	68001 - HAT SHANK	AP 70001	Hat Shank	1
3	68038-Tool Holder	AP 70038	Tool Holder	1
4	68039-Cam	AP 70039	Cam - 7-8mm	1
5	68040-Rear Driver	AP 70040	Rear Driver	1
6	68041-Roll Tool	AP 70041	Roll Tool	1
7	68007 - FRONT DRIVER	AP 70007	Front Driver - 8mm	1
8	68042-Spacer	AP 70042	Spacer	1
9	68061-Driver Guide	AP 70061	Driver Guide	1
10	68495-Die Base	AP 70608	Die Base	1
11	68496-Die Holder	AP 70609	Die Holder	1
12	68045 - DIE COVER	AP 70045	Die Cover	1
13	68013 - DIE COVER	AP 70013	Die Cover	1
14	68046-Spacer	AP 70046	Spacer	1
15	68520-Anvil	AP 70672	Anvil	1
16	68034 - SPACER	AP 70034	Spacer	1
17	68505-Front Carrier Cutoff	AP 70619	Front Carrier Cutoff	1
18	68506-Rear Die	AP 70620	Rear Die	1
19	68507-Rear Carrier Cutoff	AP 70621	Rear Carrier Cutoff	1
20	68012 - SPRING	AP 70012	Spring	2
21	68497-Feed Plate	AP 70610	Feed Plate	1
22	68498-Front Guide	AP 70611	Front Guide	1
23	68053-Brake Mount	AP 70053	Brake Mount	1
24	68499-Brake	AP 70612	Brake	1
25	68020 - BRAKE SPRING	AP 70020	Spring	1
26	68055-Slide Bracket	AP 70055	Slide Bracket	2
27	68056-Slide Block	AP 70056	Slide Block	1
28	68028 - SLIDE SHAFT	AP 70028	Slide Shaft	2
29	Boston Gear #B68-8	68092	68092-Bushing	2
30	68031 - SPRING	AP 70031	Spring	1
31	68029 - SLIDE END CAP	AP 70029	Slide End Cap	2
32	68501-Rear Guide	AP 70614	Rear Guide	1
33	68057-Feed Finger Shaft	AP 70057	Feed Finger Shaft	1
34	68022 - BEARING	AP 70022	Bearing	1
35	68500-Feed Finger	AP 70613	Feed Finger	1
36	304-250	78125	Feed Finger Spacer	1
37	68025 - SPRING CLIP	AP 70025	Spring Clip	1
38	68026 - FEED FINGER SPRING	AP 70026	Feed Finger Spring	1
39	68090 - Cotter Pin	AP 70090	Cotter Pin - 1/16" x 1"	1
40	68502-Stock Retainer	AP 70615	Stock Retainer	1
41	68440-Stripper Mount	AP 70442	Stripper Mount	1
42	68441-Stripper Rod	AP 70443	Stripper Rod	1
43	68063-Spacer Chute	AP 70063	Spacer Chute	1
44	68064-Chute	AP 70064	Chute	1
45	68743-Guard	AP 71492	Guard	1
46	8-32_31fhs		#8-32 x 5/16" Flat Hd Screw - Phillips	4
47	8-32_31sh	100091	#8-32 x 5/16" Socket Hd Cap Screw	3
48	10-24_75sh		#10-24 x 3/4" Socket Hd Cap Screw	1
49	10-32_38bh	78993	#10-32 x 3/8" Button Hd Cap Screw	2
50	10-32_38sh	70110	#10-32 x 3/8" Socket Hd Cap Screw	5
51	10-32_50sh	63056	#10-32 x 1/2" Socket Hd Cap Screw	6
52	10-32_50ss	63399	#10-32 x 1/2" Socket Hd Set Screw	1
53	10-32_75sh	63532	#10-32 x 3/4" Socket Hd Cap Screw	1
54	10-32_88bh		#10-32 x 7/8" Button Hd Cap Screw	1
55	10-32_1.12sh	62307	#10-32 x 1 1/8" Socket Hd Cap Screw	1
56	1.4-20_31sh	63763	1/4-20 x 5/16" Socket Hd Cap Screw	2
57	1.4-20_38sh	71481	1/4-20 x 3/8" Socket Hd Cap Screw	4
58	1.4-20_50sh	78328	1/4-20 x 1/2" Socket Hd Cap Screw	1
59	1.4-20_63sh	63492	1/4-20 x 5/8" Socket Hd Cap Screw	4
60	1.4-20_75sh	70030	1/4-20 x 3/4" Socket Hd Cap Screw	2
61	1.4-20_1.00sh	63168	1/4-20 x 1" Socket Hd Cap Screw	2
62	1.4-20_1.25sh	71482	1/4-20 x 1 1/4" Socket Hd Cap Screw	3
63	1.4-20_1.75 sh		1/4-20 x 1 3/4" Socket Hd Cap Screw	3
64	3.16_1.50dp	77270	3/16 x 1 1/2" Dowel Pin	4
65	3.8-16_1.00ss		3/8-16 x 1" Socket Hd. Set Screw	1
66	3.8-16_1.00sh	71902	3/8-16 x 1" Socket Hd Cap Screw	1



SP17, 19, 20, 24, 25, 954 L-R
79216

ITEM NO.	PART No.	DESCRIPTION	MATERIAL SPECIFICATION	QTY																																																							
<table border="1"> <tr> <td colspan="2">MATERIAL</td> <td colspan="2">PARTS LIST</td> <td colspan="2">EITCO ENGINEERED PRODUCTS 25 BELLOWS STREET WARWICK, RI 02886 (401)-467-2400</td> </tr> <tr> <td colspan="2">See Parts List</td> <td colspan="2"></td> <td colspan="2">SP19 L-R "8 mm" Applicator</td> </tr> <tr> <td colspan="2">HEAT TREAT</td> <td colspan="2"></td> <td colspan="2"></td> </tr> <tr> <td colspan="2">FINISH</td> <td colspan="2"></td> <td colspan="2"></td> </tr> <tr> <td colspan="2">SCALE</td> <td colspan="2">CAD FILE</td> <td colspan="2">DATE</td> </tr> <tr> <td colspan="2">CHECKED BY</td> <td colspan="2">DATE</td> <td colspan="2">DATE</td> </tr> <tr> <td colspan="2">BY DATE</td> <td colspan="2">DATE</td> <td colspan="2">DATE</td> </tr> </table>					MATERIAL		PARTS LIST		EITCO ENGINEERED PRODUCTS 25 BELLOWS STREET WARWICK, RI 02886 (401)-467-2400		See Parts List				SP19 L-R "8 mm" Applicator		HEAT TREAT						FINISH						SCALE		CAD FILE		DATE		CHECKED BY		DATE		DATE		BY DATE		DATE		DATE														
MATERIAL		PARTS LIST		EITCO ENGINEERED PRODUCTS 25 BELLOWS STREET WARWICK, RI 02886 (401)-467-2400																																																							
See Parts List				SP19 L-R "8 mm" Applicator																																																							
HEAT TREAT																																																											
FINISH																																																											
SCALE		CAD FILE		DATE																																																							
CHECKED BY		DATE		DATE																																																							
BY DATE		DATE		DATE																																																							
<table border="1"> <tr> <td colspan="5">DO NOT SCALE DRAWING</td> </tr> <tr> <td colspan="5">UNLESS OTHERWISE SPECIFIED DIMENSIONS ARE IN INCHES. TOLERANCES ARE:</td> </tr> <tr> <td colspan="5">FRACTIONS DECIMALS ANGLES</td> </tr> <tr> <td colspan="5">1/164 XX ±.01 ±16"</td> </tr> <tr> <td colspan="5">.XXX ±.01</td> </tr> <tr> <td colspan="5">.XXXX ±.002</td> </tr> <tr> <td colspan="5">SURFACE FINISH: ALL OVER</td> </tr> <tr> <td>F</td> <td>ECR# 4282</td> <td>SCJ</td> <td>7/25/16</td> <td></td> </tr> <tr> <td>E</td> <td>Re-ass'y from AP 7019 Rev D</td> <td></td> <td>1/17/12</td> <td></td> </tr> <tr> <td>LVL</td> <td>REVISION</td> <td>BY/DATE</td> <td>QTY</td> <td>USED ON</td> </tr> <tr> <td></td> <td></td> <td></td> <td></td> <td>APPLICATION</td> </tr> </table>					DO NOT SCALE DRAWING					UNLESS OTHERWISE SPECIFIED DIMENSIONS ARE IN INCHES. TOLERANCES ARE:					FRACTIONS DECIMALS ANGLES					1/164 XX ±.01 ±16"					.XXX ±.01					.XXXX ±.002					SURFACE FINISH: ALL OVER					F	ECR# 4282	SCJ	7/25/16		E	Re-ass'y from AP 7019 Rev D		1/17/12		LVL	REVISION	BY/DATE	QTY	USED ON					APPLICATION
DO NOT SCALE DRAWING																																																											
UNLESS OTHERWISE SPECIFIED DIMENSIONS ARE IN INCHES. TOLERANCES ARE:																																																											
FRACTIONS DECIMALS ANGLES																																																											
1/164 XX ±.01 ±16"																																																											
.XXX ±.01																																																											
.XXXX ±.002																																																											
SURFACE FINISH: ALL OVER																																																											
F	ECR# 4282	SCJ	7/25/16																																																								
E	Re-ass'y from AP 7019 Rev D		1/17/12																																																								
LVL	REVISION	BY/DATE	QTY	USED ON																																																							
				APPLICATION																																																							