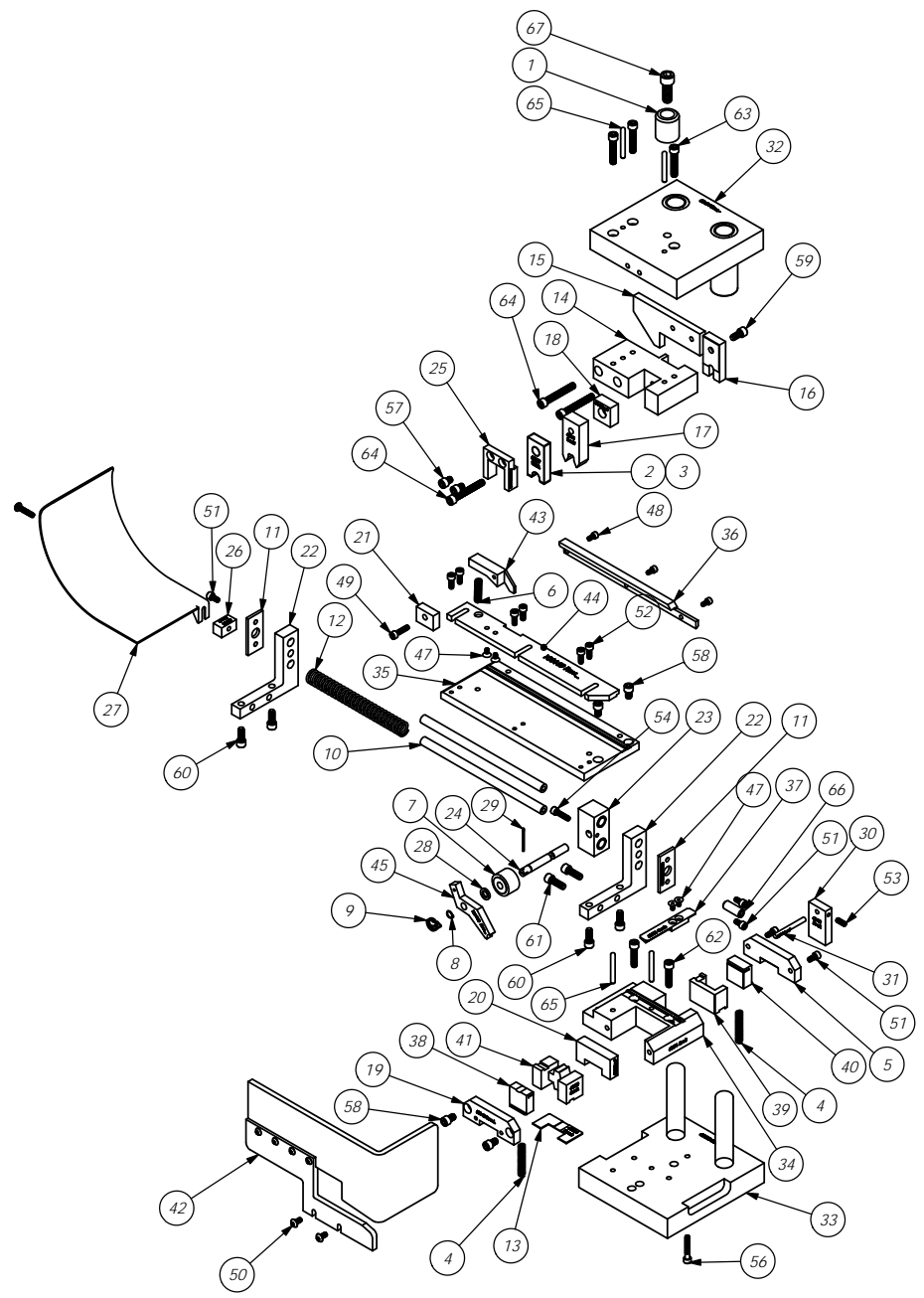


SP17, 19, 20, 24, 25, 954 L-R
79216

ITEM NO.	PART NUMBER	Part_Code	DESCRIPTION	SP20, 25, 954/QTY.
1	68001 - HAT SHANK	AP 70001	Hat Shank	1
2	62127-Front Driver		Front Driver - 8-8.6mm	1
3	68007 - FRONT DRIVER	AP 70007	Front Driver - 7mm	1
4	68012 - SPRING	AP 70012	Spring	2
5	68013 - DIE COVER	AP 70013	Die Cover	1
6	68020 - BRAKE SPRING	AP 70020	Spring	1
7	68022 - BEARING	AP 70022	Bearing	1
8	68025 - SPRING CLIP	AP 70025	Spring Clip	1
9	68026 - FEED FINGER SPRING	AP 70026	Feed Finger Spring	1
10	68028 - SLIDE SHAFT	AP 70028	Slide Shaft	2
11	68029 - SLIDE END CAP	AP 70029	Slide End Cap	2
12	68031 - SPRING	AP 70031	Spring	1
13	68034 - SPACER	AP 70034	Spacer	1
14	68038-Tool Holder	AP 70038	Tool Holder	1
15	68039-Cam	AP 70039	Cam	1
16	63342-Rear Driver		Rear Driver	1
17	68041-Roll Tool	AP 70041	Roll Tool	1
18	68042-Spacer	AP 70042	Spacer	1
19	68045 - DIE COVER	AP 70045	Die Cover	1
20	68046-Spacer	AP 70046	Spacer	1
21	68053-Brake Mount	AP 70053	Brake Mount	1
22	68055-Slide Bracket	AP 70055	Slide Bracket	2
23	68056-Slide Block	AP 70056	Slide Block	1
24	68057-Feed Finger Shaft	AP 70057	Feed Finger Shaft	1
25	68061-Driver Guide	AP 70061	Driver Guide	1
26	68063-Spacer Chute	AP 70063	Spacer Chute	1
27	68064-Chute	AP 70064	Chute	1
28	68075-Feed Finger Spacer	AP 70075	Feed Finger Spacer	1
29	68090 - Cotter Pin	AP 70090	Cotter Pin - 1/16" x 1"	1
30	68440-Stripper Mount	AP 70442	Stripper Mount	1
31	68441-Stripper Rod	AP 70443	Stripper Rod	1
32	68494-Die Hat	AP 70607	Die Hat	1
33	68495-Die Base	AP 70608	Die Base	1
34	68496-Die Holder	AP 70609	Die Holder	1
35	68497-Feed Plate	AP 70610	Feed Plate	1
36	68501-Rear Guide	AP 70614	Rear Guide	1
37	68502-Stock Retainer	AP 70615	Stock Retainer	1
38	68505-Front Carrier Cutoff	AP 70619	Front Carrier Cutoff	1
39	68506-Rear Die	AP 70620	Rear Die	1
40	68507-Rear Carrier Cutoff	AP 70621	Rear Carrier Cutoff	1
41	68520-Anvil	AP 70672	Anvil	1
42	68743-Guard	AP 71492	Guard	1
43	100158-Brake	100158	Brake	1
44	100159-Front Guide	100159	Front Guide	1
45	100160-Feed Finger	100160	Feed Finger: SP20, SP25, SP954 L-R	1
46	Boston Gear #B68-8	68092	68092-Bushing	2
47	8-32_31fh		#8-32 x 5/16" Flat Head Socket Screw	4
48	8-32_31sh	100091	#8-32 x 5/16" Socket Hd Cap Screw	3
49	10-24_75sh		#10-24 x 3/4" Socket Hd Cap Screw	1
50	10-32_38bh	78993	#10-32 x 3/8" Button Hd Cap Screw	2
51	10-32_38sh	70110	#10-32 x 3/8" Socket Hd Cap Screw	5
52	10-32_50sh	63056	#10-32 x 1/2" Socket Hd Cap Screw	6
53	10-32_50ss	63399	#10-32 x 1/2" Socket Hd Set Screw	1
54	10-32_75sh	63532	#10-32 x 3/4" Socket Hd Cap Screw	1
55	10-32_88bh		#10-32 x 7/8" Button Hd Cap Screw	1
56	10-32_1.12sh	62307	#10-32 x 1 1/8" Socket Hd Cap Screw	1
57	1.4-20_31sh	63763	1/4-20 x 5/16" Socket Hd Cap Screw	2
58	1.4-20_38sh	71481	1/4-20 x 3/8" Socket Hd Cap Screw	4
59	1.4-20_50sh	78328	1/4-20 x 1/2" Socket Hd Cap Screw	1
60	1.4-20_63sh	63492	1/4-20 x 5/8" Socket Hd Cap Screw	4
61	1.4-20_75sh	70030	1/4-20 x 3/4" Socket Hd Cap Screw	2
62	1.4-20_1.00sh	63168	1/4-20 x 1" Socket Hd Cap Screw	2
63	1.4-20_1.25sh	71482	1/4-20 x 1 1/4" Socket Hd Cap Screw	3
64	1.4-20_1.75 sh		1/4-20 x 1 3/4" Socket Hd Cap Screw	4
65	3.16_1.50dp	77270	3/16 x 1 1/2" Dowel Pin	3
66	3.8-16_1.00ss		3/8-16 x 1" Socket Hd. Set Screw	1
67	3.8-16_1.00sh	71902	3/8-16 x 1" Socket Hd Cap Screw	1



ITEM NO.	PART NO.	DESCRIPTION	MATERIAL	QTY
PARTS LIST				
See Parts List				
ETCO ENGINEERED PRODUCTS 25 BELLOWS STREET WARWICK, RI 02888 (401)-467-2400				
SP20, 25, 954 L-R "8 mm" Applicator				
DRAWING NO: SP17, 19, 20, 24, 25, 954 L-R CHECKED BY: SCJ DATE: 1/10/12				
SCALE: 1:4				
FINISH:				
SURFACE FINISH: T ALL OVER				
UNLESS OTHERWISE SPECIFIED DIMENSIONS ARE IN INCHES. TOLERANCES ARE: FRACTIONS DECIMALS ANGLES #1/64 .001 .01 .0005 .0002				
THE INFORMATION CONTAINED WITHIN THIS DRAWING IS THE SOLE PROPERTY OF ETCO. REPRODUCTION AND REPRODUCTION IN PART OR WHOLE WITHOUT THE WRITTEN PERMISSION OF ETCO IS PROHIBITED.				
APPLICATION				