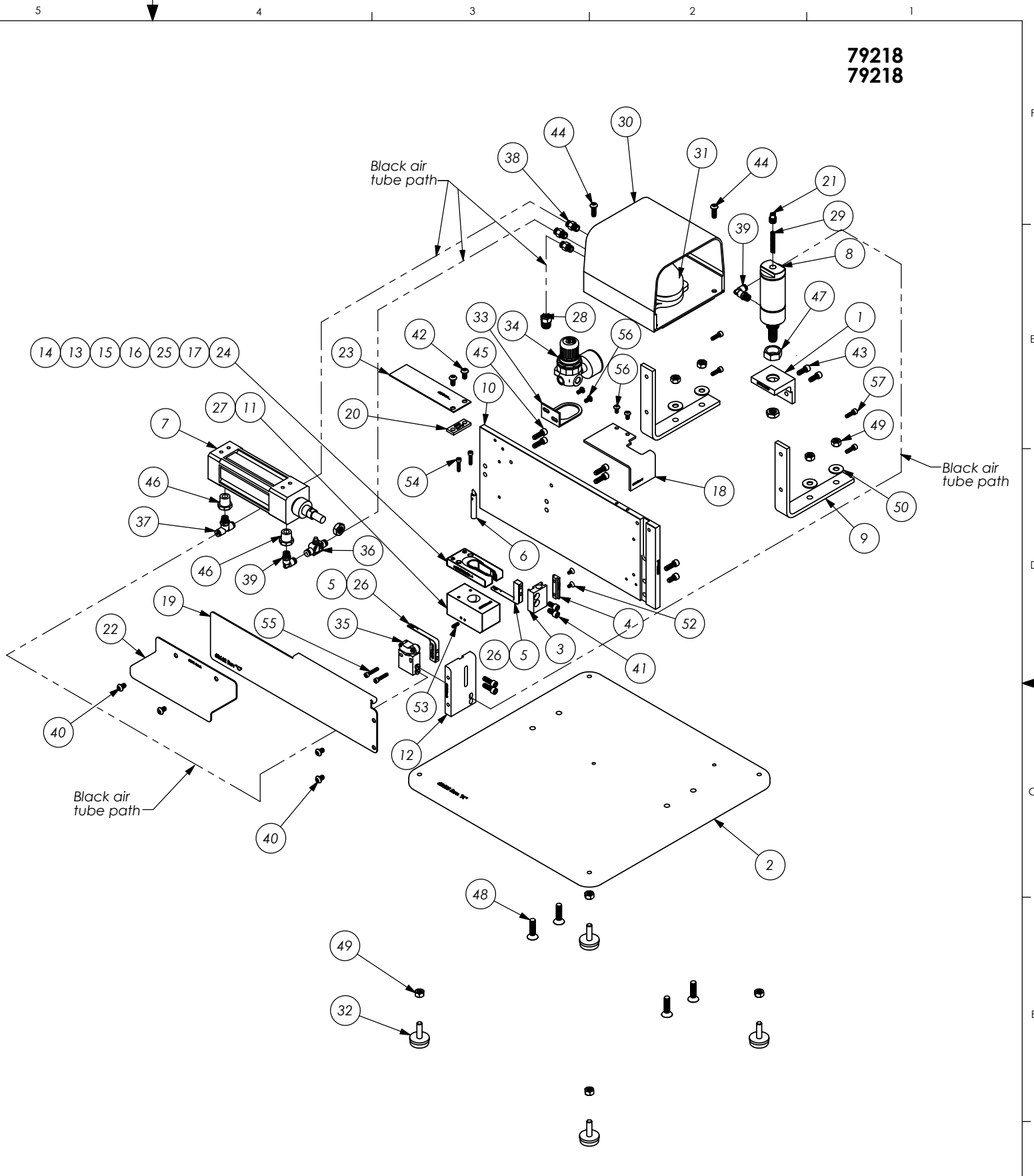


Parts List				
Item No.	Part Code	Part No.	Description	QTY.
1	62519	62519	Air Cylinder Support Bracket	1
2	62523	62523	Right Angle Booter Base	1
3	68469	68469	Top Finger Slide	1
4	68470	68470	Wear Plate	1
5	68475	68475	Boot Spreader AB1, AB7, AB8, AB9, AB10, AB49, L1	2
6	68476	68476	Angle Booter Pin Ass'y	1
7	68478	68478	Boot Block Cylinder	1
8	68479	68479	Air Cylinder	1
9	68651	68651	Bracket	2
10	68652	68652	Main Plate	1
11	68653	68653	Boot Cradle: AB1, AB7, AB8, AB9, AB10, AB49	1
12	68654	68654	Lower Finger Plate	1
13	68655	68655	Boot Holder: AB10	1
14	68656	68656	Boot Holder: AB1	1
15	68657	68657	Boot Holder: AB7	1
16	68658	68658	Boot Holder: AB49	1
17	68659	68659	Boot Holder: AB8	1
18	68661	68661	Guard	1
19	68662	68662	Front Cover Plate	1
20	68669	68669	Spacer	1
21	68670	68670	Spring Retainer	1
22	68672	68672	Top Cover Plate	1
23	68673	68673	Cylinder Cover Plate	1
24	68674	68674	Boot Holder: AB9	1
25	68690	68690	Boot Holder: AB36	1
26	68691	68691	Boot Spreader: AB36	2
27	68692	68692	Boot Cradle: AB36	1
28	63896	Legris 3175-04-14	Ø5/32" x 1/4-NPT Straight Connector	1
29	100595	LC-032C-15	Compression Spring	1
30	73780	Linemaster 522-B14	Foot Pedal Guard	1
31	62380	Linemaster 4C-30F2-S	Foot Pedal Valve	1
32	63938	McMaster Carr #2515T18	Leveling Foot	4
33	100120	Norgren R07-200 Bracket	Norgren R07-200-RGLA Mounting Bracket	1
34	100119	NG R07-200 RGLA	Regulator/Gauge	1
35	62377	Parker #PXC M521	Limit Switch	1
36	72408	Pisco JSU156	Ø5/32" In-line Flow Control	1
37	100596	Pisco PB156-N1U	5/32" x 1/8" NPT Branch Tee	1
38	62170	Pisco PC156-N1U	Ø5/32" x 1/8-NPT Straight Fitting, Black	3
39	73803	Pisco PL156-N1U	Ø5/32" x 1/8-NPT Elbow Fitting	2
40	63942	1.4-20_38bh	1/4-20 x 3/8" Button Hd Cap Screw	4
41	78328	1.4-20_50sh	1/4-20 x 1/2" Socket Hd Cap Screw	3
42	63632	1.4-20_50bh	1/4-20 x 1/2" Button Hd Cap Screw	2
43	63492	1.4-20_63sh	1/4-20 x 5/8" Socket Hd Cap Screw	2
44	63943	1.4-20_75bh	1/4-20 x 3/4" Button Hd Cap Screw	2
45	70030	1.4-20_75sh	1/4-20 x 3/4" Socket Hd Cap Screw	7
46	63940	3.8 x 1.8 hex	3/8" X 1/8" Hex Bushing	2
47	63941	.75-16hn	3/4-16 Hex Nut	1
48		5.16-18_1.25	5/16-18 x 1 1/4" Flat Hd Socket Screw	4
49	63945	5.16-18hn	5/16-18 Hex Nut	8
50	63946	5.16fw	5/16" Flat Washer	4
51	63947	7.16-20jn	7/16-20 Jam Nut	2
52	63948	8-32_33fh	#8-32 x 21/64" Flat Hd Cap Screw	2
53	63950	8-32_50ssc	#8-32 x 1/2" Cup Point Socket Set Screw	1
54	63787	8-32_75sh	#8-32 x 3/4" Socket Hd Cap Screw	2
55	63949	8-32_88sh	#8-32 x 7/8" Socket Hd Cap Screw	2
56	78993	10-32_38bh	#10-32 x 3/8" Button Hd Cap Screw	4
57	70293	10-32_63sh	#10-32 x 5/8" Socket Hd Cap Screw	4



79218
79218

ITEM No.	PART No.	DESCRIPTION	MATERIAL SPECIFICATION	QTY	RECD
J	ECR# 5402 SCJ	1/03/19	UNLESS OTHERWISE SPECIFIED DIMENSIONS ARE IN INCHES. TOLERANCES ARE: FRACTIONS DECIMALS ANGLES ±1/64 .XX ±.01 ±1/8 ° XXX ±.001 XXXX ±.0002		
H	ECR# 3987 SCJ	11/05/15			
G	ECR# 2544 SCJ	10/4/13			
F	REDRAWN ECR# 12800 SCJ	12/Jan09	SURFACE FINISH ✓ ALL OVER		
E	ECR# 12798/12799/12800	6/26/08			
LVL	REVISION	BY/DATE	QTY	USED ON	APPLICATION

PARTS LIST				
ITEM No.	PART No.	DESCRIPTION	MATERIAL SPECIFICATION	QTY
See Parts List				
MATERIAL: ETCO ENGINEERED PRODUCTS 25 BELLOWS STREET WARWICK RI 02888 (401)-467-2400				
HEAT TREAT:				
FINISH:				
SCALE: 1:16		DWG. NO. 79218		REV. J
CAD FILE:		DATE: 13Jan09	DATE: 13Jan09	DATE: 13Jan09
CHECKED BY: SCJ		DRAWN BY: SCJ		

2/18/2022