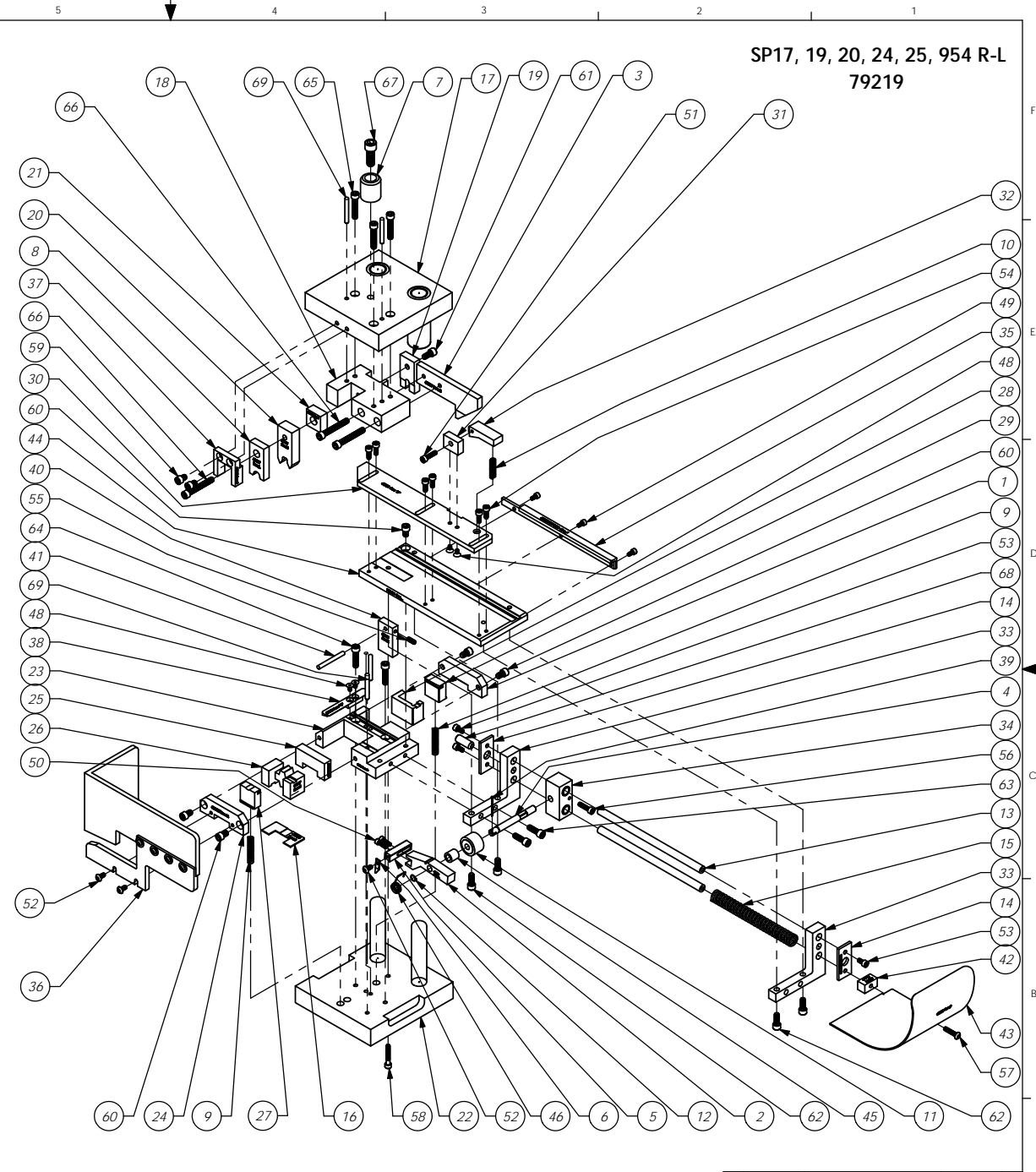


| ITEM NO. | PART NUMBER | DESCRIPTION | SP20, 25, 954 R-L "8 mm"/QTY. |
|----------|-----------------------------|--------------------------------------|-------------------------------|
| 1 | 62154 - DIE COVER | Die Cover | 1 |
| 2 | 62203-Feed Finger Holder | Feed Finger Holder | 1 |
| 3 | 62897- CAM | Cam - 8.5mm | 1 |
| 4 | 62929-Feed Finger Shaft | Feed Finger Shaft | 1 |
| 5 | 62930-Feed Adj Block | Feed Adjustment Block | 1 |
| 6 | 62928-Feed Finger | Feed finger | 1 |
| 7 | 68001 - HAT SHANK | Hat Shank | 1 |
| 8 | 68007 - FRONT DRIVER | Front Driver - 8mm | 1 |
| 9 | 68012 - SPRING | Spring | 2 |
| 10 | 68020 - BRAKE SPRING | Spring | 1 |
| 11 | 68022 - BEARING | Bearing | 1 |
| 12 | 68025 - SPRING CLIP | Spring Clip | 1 |
| 13 | 68028 - SLIDE SHAFT | Slide Shaft | 2 |
| 14 | 68029 - SLIDE END CAP | Slide End Cap | 2 |
| 15 | 68031 - SPRING | Spring | 1 |
| 16 | 68034 - SPACER | Spacer | 1 |
| 17 | 68037-Die Hat | Die Base | 1 |
| 18 | 68038-Tool Holder | Tool Holder | 1 |
| 19 | 68040-Rear Driver | Rear Driver | 1 |
| 20 | 68041-Roll Tool | Roll Tool | 1 |
| 21 | 68042-Spacer | Spacer | 1 |
| 22 | 68043-Die Base | Die Base | 1 |
| 23 | 68044-Die Holder | Die Holder | 1 |
| 24 | 68045 - DIE COVER | Die Cover | 1 |
| 25 | 68046-Spacer | Spacer | 1 |
| 26 | 68047-Anvil | Anvil | 1 |
| 27 | 68048-Front Carrier Cut-Off | Front Carrier Cut-Off | 1 |
| 28 | 68049-Rear Die | Rear Die | 1 |
| 29 | 68050-Rear Carrier Cut-Off | Rear Carrier Cut-Off | 1 |
| 30 | 68052-Front Guide | Front Guide | 1 |
| 31 | 68053-Brake Mount | Brake Mount | 1 |
| 32 | 68054-Brake | Brake | 1 |
| 33 | 68055-Slide Bracket | Slide Bracket | 2 |
| 34 | 68056-Slide Block | Slide Block | 1 |
| 35 | 68059-Rear Guide Rail | Rear Guide Rail | 1 |
| 36 | 68060-Guard | Guard Assembly | 1 |
| 37 | 68061-Driver Guide | Driver Guide | 1 |
| 38 | 68062-Stock Retainer | Stock Retainer | 1 |
| 39 | 68090 - Cotter Pin | Cotter Pin - 1/16" x 1" | 1 |
| 40 | 68440-Stripper Mount | Stripper Mount | 1 |
| 41 | 68441-Stripper Rod | Stripper Rod | 1 |
| 42 | 68063-Spacer Chute | Spacer Chute | 1 |
| 43 | 68503-Chute | Chute | 1 |
| 44 | 100454-Feed Plate | Feed Plate | 1 |
| 45 | 304-500 | Feed Finger Spacer | 1 |
| 46 | 307-83R | Feed Finger Spring | 1 |
| 47 | Boston Gear #B68-8 | 68092-Bushing | 2 |
| 48 | 8-32_31fh | #8-32 x 5/16" Flat Head Socket Screw | 4 |
| 49 | 8-32_31sh | #8-32 x 5/16" Socket Hd Cap Screw | 3 |
| 50 | 8-32_50sh | #8-32 x 1/2" Socket Hd Cap Screw | 2 |
| 51 | 10-24_75sh | #10-24 x 3/4" Socket Hd Cap Screw | 1 |
| 52 | 10-32_38bh | #10-32 x 3/8" Button Hd Cap Screw | 3 |
| 53 | 10-32_38sh | #10-32 x 3/8" Socket Hd Cap Screw | 3 |
| 54 | 10-32_50sh | #10-32 x 1/2" Socket Hd Cap Screw | 6 |
| 55 | 10-32_50ss | #10-32 x 1/2" Socket Hd Set Screw | 1 |
| 56 | 10-32_75sh | #10-32 x 3/4" Socket Hd Cap Screw | 1 |
| 57 | 10-32_88bh | #10-32 x 7/8" Button Hd Cap Screw | 1 |
| 58 | 10-32_1.12sh | #10-32 x 1 1/8" Socket Hd Cap Screw | 1 |
| 59 | 1.4-20_31sh | 1/4-20 x 5/16" Socket Hd Cap Screw | 2 |
| 60 | 1.4-20_38sh | 1/4-20 x 3/8" Socket Hd Cap Screw | 5 |
| 61 | 1.4-20_50sh | 1/4-20 x 1/2" Socket Hd Cap Screw | 1 |
| 62 | 1.4-20_63sh | 1/4-20 x 5/8" Socket Hd Cap Screw | 4 |
| 63 | 1.4-20_75sh | 1/4-20 x 3/4" Socket Hd Cap Screw | 2 |
| 64 | 1.4-20_1.00sh | 1/4-20 x 1" Socket Hd Cap Screw | 2 |
| 65 | 1.4-20_1.25sh | 1/4-20 x 1 1/4" Socket Hd Cap Screw | 3 |
| 66 | 1.4-20_1.75 sh | 1/4-20 x 1 3/4" Socket Hd Cap Screw | 3 |
| 67 | 3.8-16_1.00sh | 3/8-16 x 1" Socket Hd Cap Screw | 1 |
| 68 | 3.8-16_1.00ss | 3/8-16 x 1" Socket Hd. Set Screw | 1 |
| 69 | 3.16_1.50dp | 3/16 x 1 1/2" Dowel Pin | 4 |



SP17, 19, 20, 24, 25, 954 R-L
79219

Approved
For Tooling
1/11/18

| ITEM No. | PART No. | DESCRIPTION | MATERIAL | QTY | REVISION | BY/DATE | APPLICATION | SCALE | CAD FILE | CHECKED BY | DATE | DRAWN BY | DATE | SIZE |
|--|----------------------|-------------|----------|-----|----------|---------|-------------|-------|----------|------------|------|----------|------|------|
| <p>DO NOT SCALE DRAWING</p> <p>UNLESS OTHERWISE SPECIFIED DIMENSIONS ARE IN INCHES. TOLERANCES ARE: FRACTIONS: DECIMALS: ANGLES: ±1/64 XX ±0.01 ±1/2°</p> <p>SURFACE FINISH: ALL OVER</p> <p>THE INFORMATION CONTAINED WITHIN THIS DRAWING IS THE SOLE PROPERTY OF ETCO. NO REPRODUCTION OR REPRODUCTION IN PART OR WHOLE WITHOUT THE WRITTEN PERMISSION OF ETCO IS HEREBY PROHIBITED.</p> | | | | | | | | | | | | | | |
| F | ECR# 4934 | SCJ | 3/18/18 | | | | | | | | | | | |
| E | Re-assy from AP 7003 | Rev D | 3/18/12 | | | | | | | | | | | |
| LVL | | | | | | | | | | | | | | |

See Parts List

ETCO ENGINEERED PRODUCTS
25 BELLOWS STREET
WARWICK, RI 02886 (401)-467-2400

SP20, 25, 954 R-L "8 mm"
Applicator

SCALE: 1:12

CHECKED BY: SPJ DATE: 1/17/12

DRAWN BY: SCJ DATE: 1/17/12