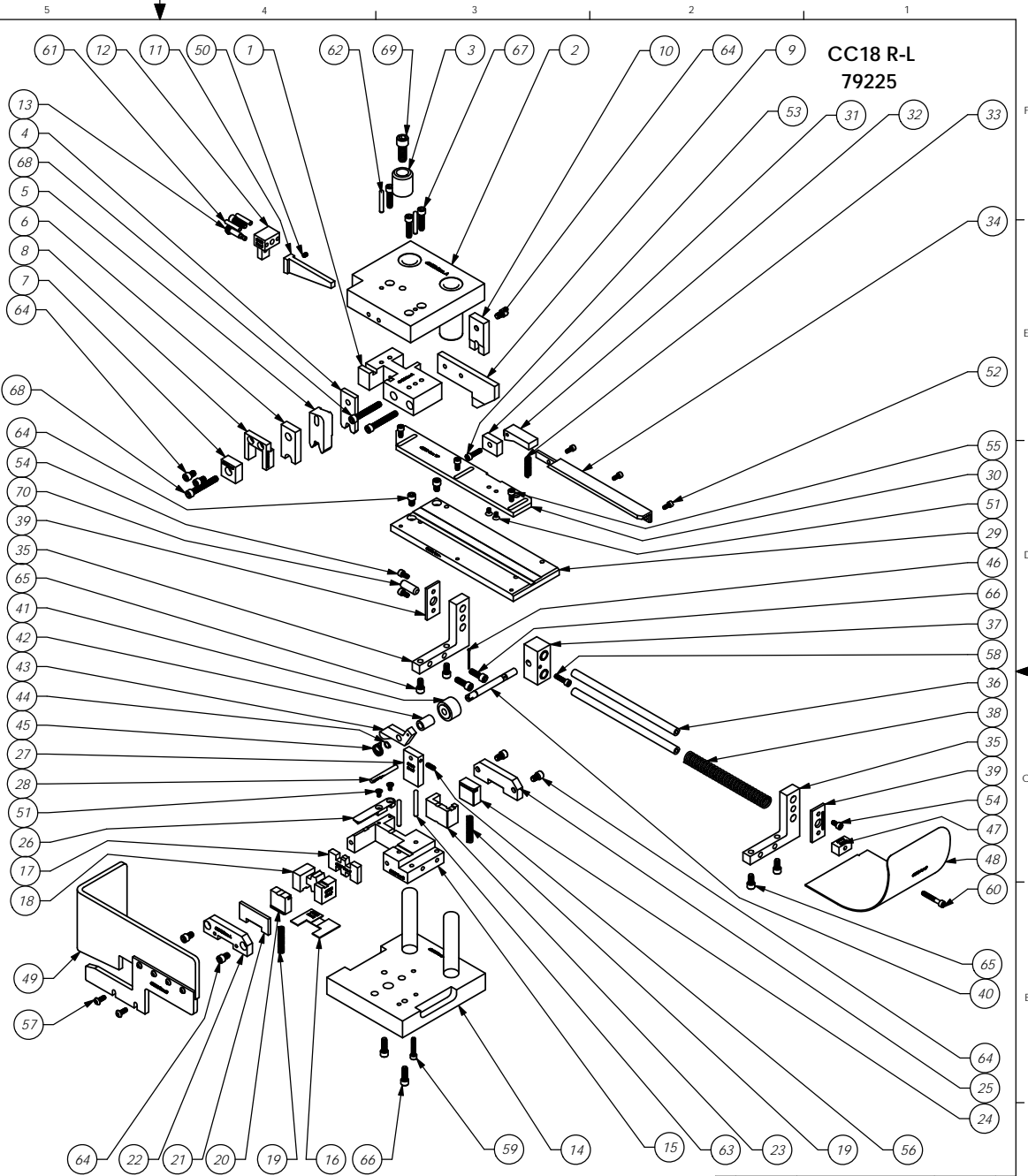


ITEM NO.	PART NUMBER	DESCRIPTION	QTY.
1	63424-Tool Holder	Tool Holder	1
2	63423 - Die Hat	Die Hat	1
3	68001 - HAT SHANK	Hat Shank	1
4	68666-Core Roll Tool	Core Roll Tool - 8 mm	1
5	68665-Roll Tool	Roll Tool	1
6	68007 - FRONT DRIVER	Front Driver - 8mm	1
7	68042-Spacer	Spacer	1
8	68061-Driver Guide	Driver Guide	1
9	68039-Cam	Cam - 7-8mm	1
10	68040-Rear Driver	Rear Driver	1
11	68627-Adjustment Block	Adjustment Block	1
12	68630-Adjust Screw Mount	Adjust Screw Mount	1
13	68628-Adjust Screw	Adjust Screw	1
14	63426-Die Base	Die Base	1
15	63425-Die Holder	Die Holder	1
16	62884-Spacer	Spacer	1
17	68667-Core Anvil	Core Anvil	1
18	68664-Anvil	Anvil	1
19	68012 - SPRING	Spring	2
20	68048-Front Carrier Cut-Off	Front Carrier Cut-Off	1
21	62883-Spacer	Spacer	1
22	68045 - DIE COVER	Die Cover	1
23	68663-Rear Die	Rear Die	1
24	68050-Rear Carrier Cut-Off	Rear Carrier Cut-Off	1
25	62154 - DIE COVER	Die Cover	1
26	63427-Stock Retainer	Stock Retainer	1
27	68440-Stripper Mount	Stripper Mount	1
28	68441-Stripper Rod	Stripper Rod	1
29	63428-Feed Plate	Feed Plate	1
30	68052-Front Guide	Front Guide	1
31	68053-Brake Mount	Brake Mount	1
32	68054-Brake	Brake	1
33	68020 - BRAKE SPRING	Spring	1
34	62887-Rear Guide	Rear Guide Rail	1
35	68055-Slide Bracket	Slide Bracket	2
36	68028 - SLIDE SHAFT	Slide Shaft	2
37	68056-Slide Block	Slide Block	1
38	68031 - SPRING	Spring	1
39	68029 - SLIDE END CAP	Slide End Cap	2
40	68021 - FEED FINGER SHAFT	Feed Finger Shaft	1
41	68022 - BEARING	Bearing	1
42	68023 - FEED FINGER SPACER	Feed Finger Spacer	1
43	68058-Feed Finger	Feed Finger	1
44	68025 - SPRING CLIP	Spring Clip	1
45	68329-Feed Finger Spring	Feed Finger Spring	1
46	Default	68090-Cotter Pin - 1/6" x 1"	1
47	68063-Spacer Chute	Spacer Chute	1
48	68503-Chute	Chute	1
49	62888 - GUARD	Guard	1
50	8-32_25ss	#8-32 x 1/4" Socket Hd Set Screw	1
51	8-32_31fhs	#8-32 x 5/16" Flat Hd Screw - Phillips	4
52	8-32_38sh	#8-32 x 3/8" Socket Hd Cap Screw	3
53	10-24_75sh	#10-24 x 3/4" Socket Hd Cap Screw	1
54	10-32_38sh	#10-32 x 3/8" Socket Hd Cap Screw	3
55	10-32_44sh	#10-32 x 7/16" Socket Hd Cap Screw	3
56	10-32_50ss	#10-32 x 1/2" Socket Hd Set Screw	1
57	10-32_50bh	#10-32 x 1/2" Button Hd Cap Screw	2
58	10-32_75sh	#10-32 x 3/4" Socket Hd Cap Screw	1
59	10-32_1.00sh	#10-32 x 1" Socket Hd Cap Screw	1
60	10-32_1.25sh	#10-32 x 1 1/4" Socket Hd Cap Screw	1
61	3/16_1.00dp	3/16" x 1" Dowel Pin	2
62	3/16_1.25dp	3/16 x 1 1/4" Dowel Pin	2
63	3/16_1.50dp	3/16 x 1 1/2" Dowel Pin	2
64	1.4-20_38sh	1/4-20 x 3/8" Socket Hd Cap Screw	9
65	1.4-20_50sh	1/4-20 x 1/2" Socket Hd Cap Screw	4
66	1.4-20_75sh	1/4-20 x 3/4" Socket Hd Cap Screw	5
67	1.4-20_1.00sh	1/4-20 x 1" Socket Hd Cap Screw	3
68	1.4-20_1.75 sh	1/4-20 x 1 3/4" Socket Hd Cap Screw	3
69	3.8-16_1.00sh	3/8-16 x 1" Socket Hd Cap Screw	1
70	3.8-16_1.00ss	3/8-16 x 2" Socket Hd. Set Screw	1



ITEM NO.	PART NO.	DESCRIPTION	MATERIAL SPECIFICATION	QTY.	RECD.
See Parts List		<b>CC18 R-L Applicator</b> ETCO ENGINEERED PRODUCTS 25 BELLOWS STREET WARRICK RI 02888 (401)-467-2400			
C		Re-ass'y from AP 7034 Rev B	2/2/12		
LVL		REVISION	BY/DATE	QTY	USED ON
				APPLICATION	
SCALE		1:4	CAD FILE	CHECKED BY	DATE
				SCJ	2/27/12
DRAWN BY		DATE		REV.	
				C	