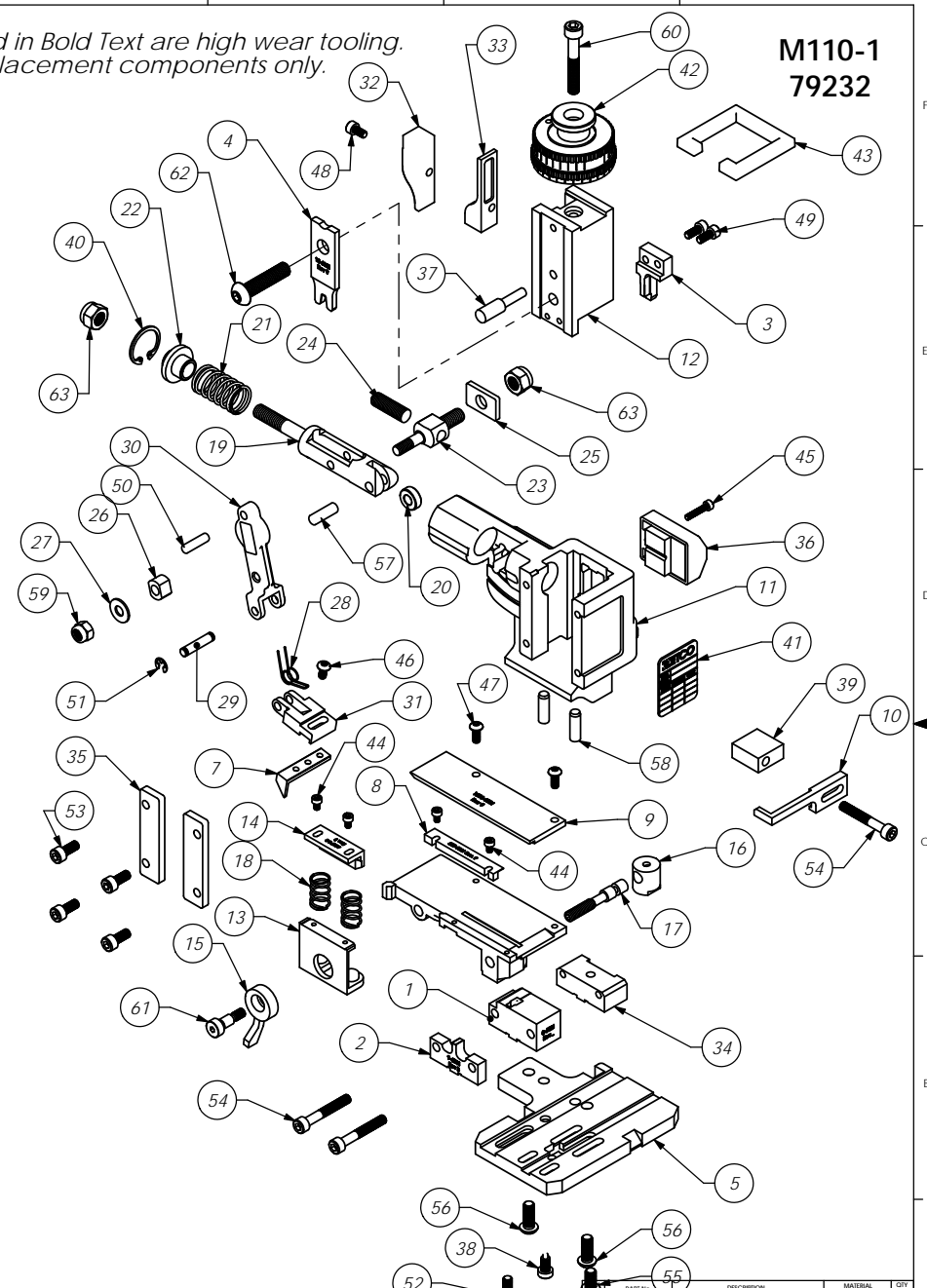


ITEM NO.	Part_Code	PART NUMBER	DESCRIPTION	QTY.
1	62192	8-6021	Cut-off Die	1
2	61488	9-6001	Anvil	1
3	62193	12-6021	Cut-off Punch	1
4	62190	13-6021	Wire Rolling Tool	1
5	62198	200-6021	Base Plate	1
6	62195	250-6021	Feed Plate	1
7	61625	303-6001	Feed Finger	1
8	62197	500-6021	Front Guide	1
9	62196	1000-6021	Rear Guide	1
10	61693	1600-6002	Stripper	1
11	61542	MM1-S	Frame	1
12	61545	MM3-S	Plunger	1
13	61736	MM7-S-1	Brake	1
14	61738	MM7-S-2	Brake Shoe	1
15	61550	MM8-S	Brake Lever	1
16	61551	MM9-S	Adjustment Screw Retainer	1
17	61552	MM10-S	Adjustment Screw	1
18	61553	MM11-S	Brake Spring	2
19	61554	MM12	Adjustable Feed Piston	1
20	61555	MM13	Cam Roller	1
21	61556	MM14	Piston Spring	1
22	61557	MM15	Spring Plate	1
23	61558	MM16	Feed Adjustment Block	1
24	61559	MM17	Feed Adjustment Screw	1
25	61560	MM18	Retainer	1
26	61561	MM19	Guide Block	1
27	61562	MM20	Feed Washer	1
28	61563	MM21	Feed Finger Spring	1
29	61564	MM22	Feed Finger Shaft	1
30	61565	MM23	Feed Arm	1
31	61566	MM24	Feed Finger Retainer	1
32	61573	MM31	Post-feed Cam	1
33	61574	MM32	Pre-Feed Cam	1
34	61581	MM37-S	Tool Block	1
35	61583	MM39	Gib	2
36	61585	MM43	Counter Ass'y.	1
37	61586	MM44	Locator Pin	1
38	61588	MM47	Dog Screw	1
39	61592	MM50-S	Stripper Spacer	1
40	61595	MM56	Retaining Ring	1
41	61598	MM59	ID Plate	1
42	61596	MM57	Continuous Regulation Head Assembly	1
43	61597	MM58	Protection Spacer	1
44		M3x0.5_5.0sh	M3 x 5mm Socket Hd Cap Screw	4
45		M3x0.5_16.0sh	M3 x 0.5 x 16mm Socket Hd Cap Screw	1
46		M4x_7_8.0bh	M4 x .7 x 8mm Button Hd Cap Screw	1
47		M4x_7_10.0bh	M4 x .7 x 10mm Button Hd Cap Screw	2
48		M4x0.7_8.0sh	M4 x .7 x 8.0 Socket Hd Cap Screw	1
49		M4x0.7_10.0sh	M4 x 10mm Socket Hd Cap Screw	2
50		M5_18.0dp	M5 x 18mm Dowel Pin	1
51		M5_M3.9err	M5 External Retaining Ring	2
52	63521	M5x.8_10.0sh	M5 x .8 x 10mm Socket Hd Cap Screw	1
53		M5x.8_12.0sh	M5 x .8 x 12mm Socket Hd Cap Screw	4
54		M5x.8_35.0sh	M5 x .08 x 35mm Socket Hd Cap Screw	3
55		M6x1.0_12.0bh	M6 x 1.0 x 12mm Button Hd Cap Screw	1
56		M6x1.0_16.0bh	M6 x 1.0 x 16mm Button Hd Cap Screw	2
57		M6_18dp	M6 x 18mm Dowel Pin	1
58		M6_20dp	M6 x 20mm Dowel Pin	2
59		M6_1n	M6 Lock Nut	1
60		M6x1.0_40.0sh	M6 x 1.0 x 40mm Socket Hd Cap Screw	1
61		M6_10shss	M6 x 10mm Socket Hd Shoulder Screw	1
62	62092	M8 x 1.25_35.0bh	M8 x 1.25 x 35mm Button Hd Cap Screw	1
63		M8_1n	M8 Lock Nut	2

Note:
1) Items marked in Bold Text are high wear tooling.
2) Use OEM replacement components only.



LVL		REVISION	BY/DATE	DESCRIPTION	DATE	SCALE	CAD FILE	CHECKED BY	DATE	DRAWN BY	DATE	REV
				DO NOT SCALE DRAWING								
				UNLESS OTHERWISE SPECIFIED DIMENSIONS ARE IN INCHES TOLERANCES ARE:								
				FRACTIONS DECIMALS ANGLES								
				±1/64 .001 .010 .015								
				SURFACE FINISH	ALL OVER							
				1	M110-1							
				QTY	USED ON							
				APPLICATION								
				MATERIAL		PARTS LIST		DESCRIPTION		MATERIAL SPECIFICATION		QTY REQD
				See Parts List		EFCO ENGINEERED PRODUCTS 25 BELLOWS STREET WARRICK RI 02888 (401)-467-2400		MM Side Feed Applicator				
				HEAT TREAT		FINISH		DRG. NO.		M110-1		REV.
				SCALE		1:2		CHECKED BY		DATE		CSG
				DATE				DATE				08/Jan08
				DRAWN BY				DATE				CSG