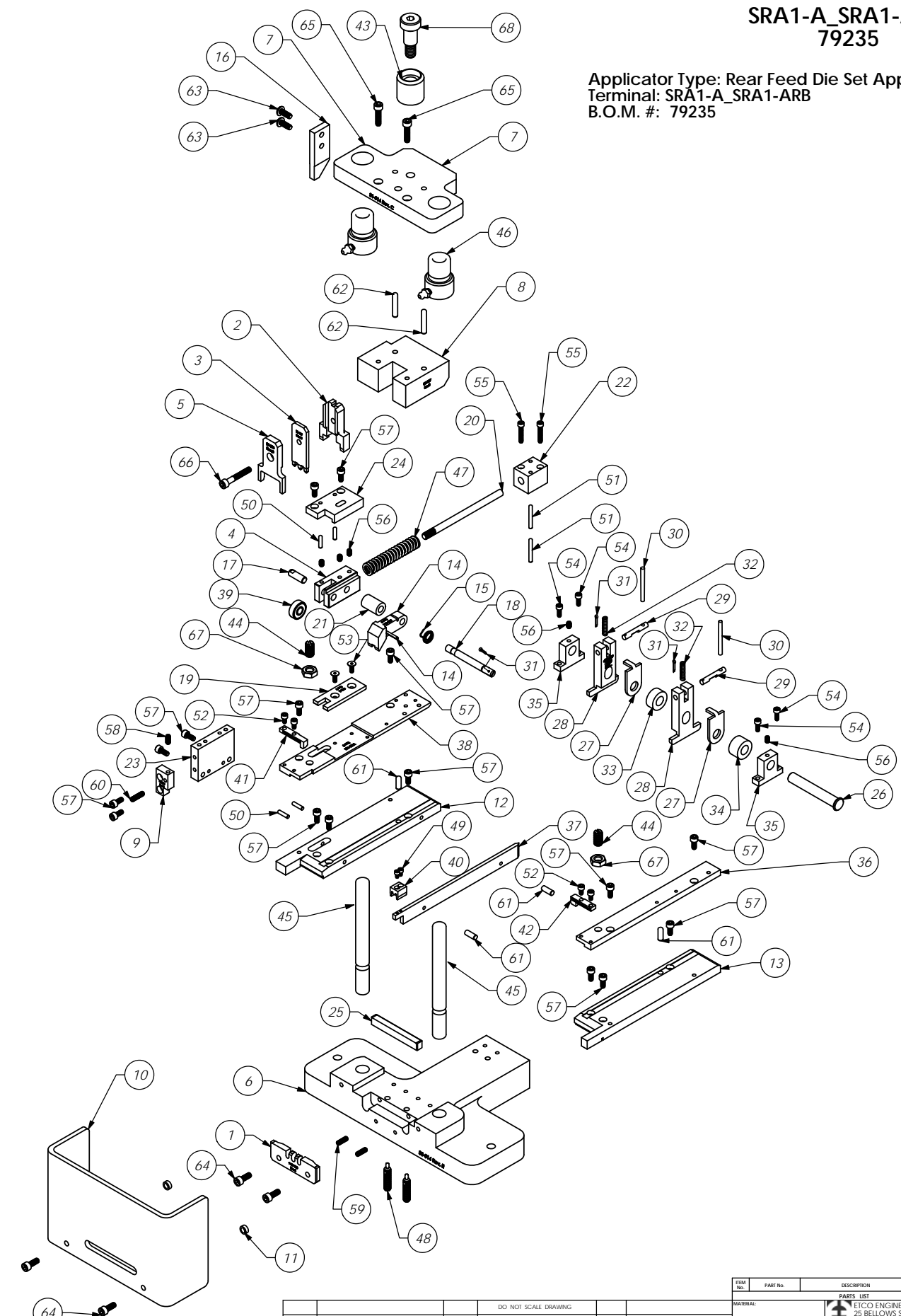


Parts List					Parts List				
Item No.	Part Code	Part No.	Description	QTY.	Item No.	Part Code	Part No.	Description	QTY.
1	67543	9-CS-158	Anvil	67543	53		6-32_.38fh	#6-32 x 3/8" Flat Hd Cap Screw	2
2	61665	12-109	Shear Punch	1	54	63209	6-32_.38sh	#6-32 x 3/8" Socket Hd Cap Screw	4
3	62460	13-139	Wire Rolling Tool*	1	55	69493	6-32_.75sh	#6-32 x 3/4" Socket Hd Cap Screw	2
4	60175	22-007	Slide	1	56	62472	8-32_.25ssf	#8-32 x 1/4" Socket Hd Set Screw	5
5	69654	23-008	Terminal Guide	1	57	63161	8-32_.38sh	#8-32 x 3/8" Socket Hd Cap Screw	16
6	60138	30-014	Base	1	58		8-32_.38ssf	#8-32 x 3/8" Socket Hd Set Screw	1
7	60030	31-014	Hat	1	59	63950	8-32_.50ssc	#8-32 x 1/2" Cup Point Socket Set Screw	2
8	60031	32-017	Tool Holder	1	60	60452	8-32_.63ssf	#8-32 x 5/8" Socket Hd Set Screw	1
9	60182	34-008	Stop Block	1	61	63158	3.16_.50dp	Ø 3/16" x 1/2" Dowel Pin	4
10	69355	199-1	Guard	1	62	62010	3.16_1.00dp	3/16" x 1" Dowel Pin	2
11	63675	199S-125	Guard Spacer	2	63	76501	10-32_.50bh	#10-32 x 1/2" Button Hd Cap Screw	2
12	69314	250-269	Die Plate	1	64	63056	10-32_.50sh	#10-32 x 1/2" Socket Hd Cap Screw	4
13	60172	250-270	Die Plate	1	65	63532	10-32_.75sh	#10-32 x 3/4" Socket Hd Cap Screw	2
14	69474	303-41-1	Feed Finger	1	66	77396	10-32_1.25sh	#10-32 x 1 1/4" Socket Hd Cap Screw	1
15	69591	307-54	Feed finger spring	1	67		5.16-18jn	5/16-18 Hex Jam Nut	2
16	69205	314-119-1	Cam	1	68	62622	1.2_.75shss	1/2" x 3/4" Socket Hd Shoulder Screw	1
17	60179	337-2	Pin	1					
18	67609	337-8	Pin	1					
19	74860	338-2	Slide plate	1					
20	60174	339-1	Spring Shaft	1					
21	69650	340-765	Spacer	1					
22	60173	341-3	Spring Block	1					
23	60180	342-3	Mount	1					
24	60181	342-4-1	Cover	1					
25	69652	346-2	Plunger	1					
26	74495	401-Finished	Brake Shaft	1					
27	74496	402	Spring Retainer	2					
28	60185	403-239	Brake Body	2					
29	74673	404	Brake Cam	2					
30	74674	405	Taper Pin	2					
31	74675	406	Cotter Pin	3					
32	74676	407	Brake Spring	2					
33	60845	408-.330	Spacer	1					
34	60846	408-.450	Spacer	1					
35	74878	435-1-A	Brake mount	2					
36	69303	500-245	Rear Guide	1					
37	69443	500-246-1	Center Guide	1					
38	69315	1000-132	Front Guide	1					
39	75719	1142	Cam Roller Bearing	1					
40	69420	1600-BS	Back Stop	1					
41	69283	1600-SRA-L-1	Left Wire Stripper	1					
42	69655	1600-SRA-R-1	Wire Stripper	1					
43	77634	CS-110	Plunger Shank	1					
44	69387	Carr Lane CL-51-SPS-2	Spring Plunger, 5/16-18 x 9/16"	2					
45	64204	Danly 5-0420-1	Guide Post	2					
46	64203	Danly 6-04-61-H	Guide Post Bushing	2					
47	69619	MHC113x2.500	Spring	1					
48	69620	Vlier #S-54N	Spring Plunger	2					
49		4-40_.19sh	#4-40 x 3/16" Socket Hd Cap Screw	2					
50	63507	1.8_.50dp	Ø 1/8" x 1/2" Dowel	4					
51	62849	1.8_1.00dp	1/8" x 1" Dowel	2					
52	63207	6-32_.25sh	#6-32 x 1/4" Socket Hd Cap Screw	4					

**NOTE:**  
ITEMS MARKED IN BOLD TEXT ARE HIGH WEAR ITEMS.



**SRA1-A\_SRA1-ARB  
79235**

Applicator Type: Rear Feed Die Set Applicator  
Terminal: SRA1-A\_SRA1-ARB  
B.O.M. #: 79235

REV	DATE	DESCRIPTION	MATERIAL SPECIFICATION	OFF REC'D
A	02/13/14	ECR# 3077 SCJ		
		BY/DATE		

PARTS LIST		MATERIAL SPECIFICATION		OFF REC'D	
QTY	USED ON	SCALE	CAD REL	CHECKED BY	DATE
1	APPLICATION	2.5		CSG	02/Jan/08

DO NOT SCALE DRAWING		UNLESS OTHERWISE SPECIFIED DIMENSIONS ARE IN INCHES TOLERANCES ARE:	
FRACTIONS	DECIMALS	ANGLES	
±.004	±.01	±1/2°	
±.001	±.005		
±.0002	±.001		
SURFACE FINISH: ALL OVER			
THE INFORMATION CONTAINED HEREIN IS THE PROPERTY OF ETICO ENGINEERED PRODUCTS AND IS NOT TO BE REPRODUCED OR TRANSMITTED IN ANY FORM OR BY ANY MEANS, ELECTRONIC OR MECHANICAL, INCLUDING PHOTOCOPYING, RECORDING, OR BY ANY INFORMATION STORAGE AND RETRIEVAL SYSTEM, WITHOUT THE WRITTEN PERMISSION OF ETICO ENGINEERED PRODUCTS.			

ETICO ENGINEERED PRODUCTS		25 BELLOWS STREET		WARWICK, RI 02888 (401)-467-2400	
Die Set Applicator		SRA1-A_SRA1-ARB		REV: A	
DATE: 02/13/14		DRAWN BY: CSJ		DATE: 02/Jan/08	