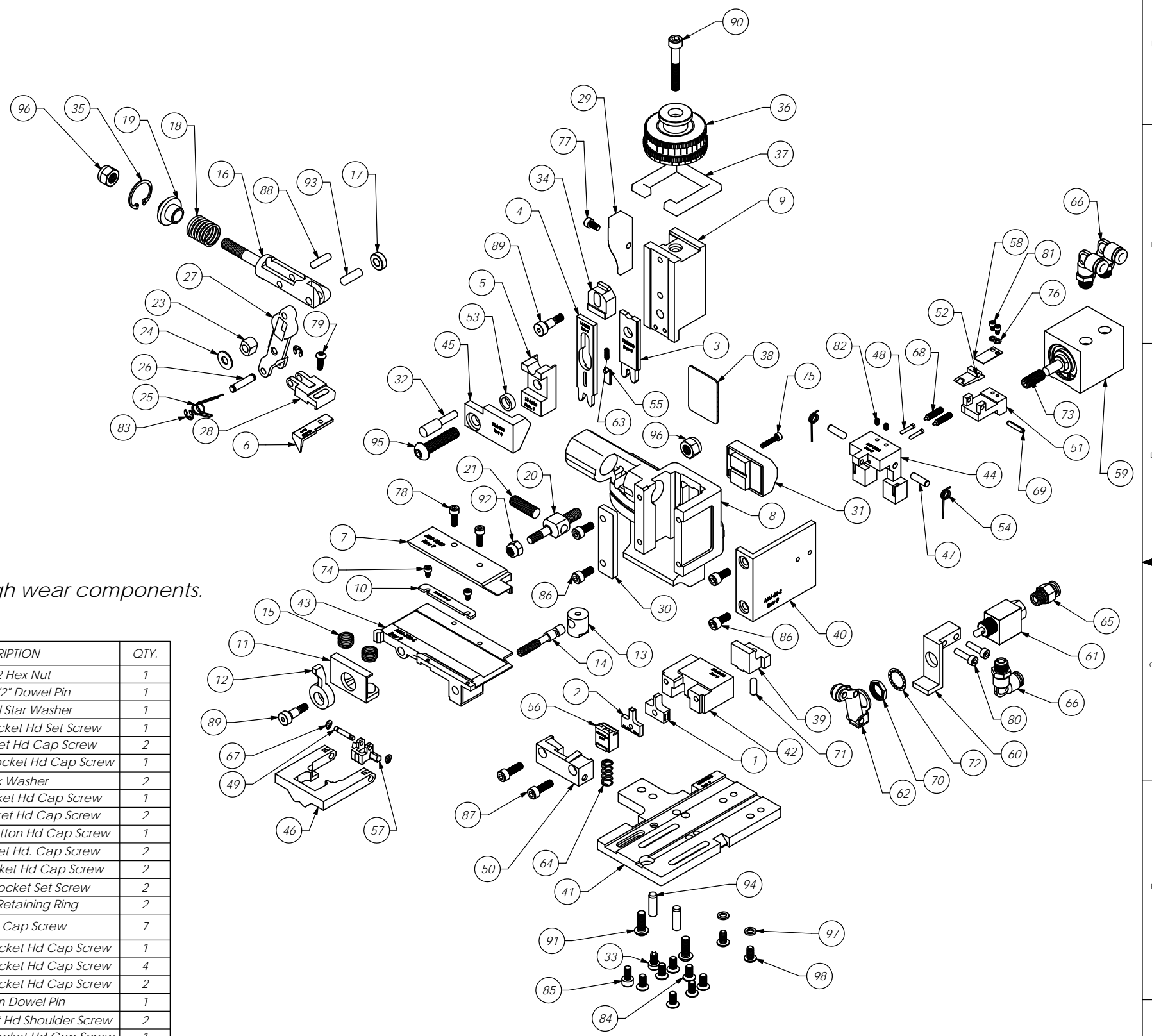


ITEM NO.	Part Code	PART NUMBER	DESCRIPTION	QTY.
1	76678	9-4004	Wire Anvil	1
2	76679	9A-4004	Insulation Anvil	1
3	62136	13-7000	Wire Rolling Tool	1
4	62138	14-7000	Insulation Rolling Tool	1
5	62137	15-6020	Cut-Off Pad Driver	1
6	62133	303-6020	Feed Finger	1
7	62134	500-6020	Rear Guide	1
8	61542	MM1-S	Frame	1
9	61545	MM3-S	Plunger	1
10	61762	MM6-S-1	Front Guide	1
11	61549	MM7-S	Brake	1
12	61550	MM8-S	Brake Lever	1
13	61551	MM9-S	Adjustment Screw Retainer	1
14	61552	MM10-S	Adjustment Screw	1
15	61553	MM11-S	Brake Spring	2
16	61554	MM12	Adjustable Feed Piston	1
17	61555	MM13	Cam Roller	1
18	61556	MM14	Piston Spring	1
19	61557	MM15	Spring Plate	1
20	61558	MM16	Feed Adjustment Block	1
21	61559	MM17	Feed Adjustment Screw	1
22	61560	MM18	Retainer	1
23	61561	MM19	Guide Block	1
24	61562	MM20	Feed Washer	1
25	61563	MM21	Feed Finger Spring	1
26	61564	MM22	Feed Finger Shaft	1
27	61565	MM23	Feed Arm	1
28	61566	MM24	Feed Finger Retainer	1
29	61573	MM31	Post-feed Cam	1
30	61583	MM39	Gib	1
31	61585	MM43	Counter Ass'y.	1
32	61586	MM44	Locator Pin	1
33	61588	MM47	Dog Screw	1
34	61590	MM48	IRT Adjustment Block	1
35	61595	MM56	Retaining Ring	1
36	61596	MM57	Continuous Regulation Head Assembly	1
37	61597	MM58	Protection Spacer	1
38	61598	MM59	ID Plate	1
39	62132	MM-60-S	Insulation Pusher Stop	1
40	62131	MM-61-S	Valve Mounting Bracket	1
41	62139	MM-302-S	Base Plate	1
42	62141	MM-310-S	Die Holder	1
43	62140	MM-330-S	Feed Plate	1
44	62142	MM-332-S	Support	1
45	62135	MM-338	Arm Switch Cam (1 1/8" Stroke)	1
46	70865	MX301-4-ITD-S	Latching Gate	1
47	76563	MX304-ITD-S	Hinge Pin	2
48	76564	MX305-ITD-S	Pin	2
49	76567	MX308-ITD-S	Latch Pivot Pin	1
50	78936	MX309-4-ITD-S	Cut-off Keeper	1
51	72259	MX313-1-ITD-S	Insulation Pusher for 1/4" Terminal	1
52	76573	MX314-ITD-S	Catch	1
53	76574	MX315-ITD-S	Insulation Tool Spacer	1
54	76575	MX316-ITD-S	Latch Spring	2
55	76578	MX319-ITD-S	Knock off	1
56	78935	MX326-4-ITD-S	Cut-off Pad	1
57	76592	MX333-ITD-S	Latch (1/4" Wire Stop)	1
58	72260	MX344-1-ITD-S	Leaf Slide	1
59	72099	MX348-ITD-S	.550 Strike Slide Cylinder	1
60	61993	MX358-2-ITD-S	Valve Mounting Plate	1
61	72318	Clippard MJV-3	3-Way Valve	1
62	72317	Clippard #12296	Cam Follower	1
63	72315	LC-022A-4	Compression Spring	1
64	78719	LC-051D-11-M	Compression Spring	1
65	73222	Pisco PC250-N1U	1/4" x 1/8" NPT Straight	1
66	72352	Pisco PL250-N1U	Ø1/4" x 1/8-NPT Elbow Fitting, White	3
67	63200	Truarc #5555-12	Retaining Ring	2
68	63201	Vlier #PH-51-P	Spring Plunger	2
69	63053	1.8_.63rp	1/8" x 5/8" Roll Pin	1

Note:
Items marked in bold text are high wear components.

ITEM NO.	Part Code	PART NUMBER	DESCRIPTION	QTY.
70		15.32-32hn	15/32-32 Hex Nut	1
71	63158	3.16_.50dp	Ø 3/16" x 1/2" Dowel Pin	1
72		1.21sw	1/2" Internal Star Washer	1
73	71086	5.16-24_.75ssf	5/16-24 x 3/4" Socket Hd Set Screw	1
74		M3x0.5_5.0sh	M3 x 5mm Socket Hd Cap Screw	2
75		M3x0.5_16.0sh	M3 x 0.5 x 16mm Socket Hd Cap Screw	1
76	63202	4lw	#4 Lock Washer	2
77		M4x0.7_8.0sh	M4 x .7 x 8.0 Socket Hd Cap Screw	1
78		M4x0.7_12.0sh	M4 x 12mm Socket Hd Cap Screw	2
79		M4x.7_12.0bh	M4 x .7 x 10mm Button Hd Cap Screw	1
80		M4x0.7_16.0sh	M4x0.7x 16 Socket Hd. Cap Screw	2
81	63204	4-40_.16sh	#4-40 x 5/32" Socket Hd Cap Screw	2
82	63206	5-40_.19ssf	#5-40 x 3/16" Socket Set Screw	2
83		M5_M3.9err	M5 External Retaining Ring	2
84		B18.3.4M - 8 x 1.25 x 10 SBHCS --S	Button Hd. Cap Screw	7
85	63521	M5x.8_10.0sh	M5 x .8 x 10mm Socket Hd Cap Screw	1
86		M5x.8_12.0sh	M5 x .8 x 12mm Socket Hd Cap Screw	4
87		M5x.8_16.0sh	M5 x .8 x 16mm Socket Hd Cap Screw	2
88		M5_18.0dp	M5 x 18mm Dowel Pin	1
89		M6_10shss	M6 x 10mm Socket Hd Shoulder Screw	2
90		M6x1.0_40.0sh	M6 x 1.0 x 40mm Socket Hd Cap Screw	1
91		M6x1.0_16.0bh	M6 x 1.0 x 16mm Button Hd Cap Screw	2
92		M6_1n	M6 Lock Nut	1
93		M6_18dp	M6 x 18mm Dowel Pin	1
94		M6_20dp	M6 x 20mm Dowel Pin	2
95	62092	M8 x 1.25_.35.0bh	M8 x 1.25 x 35mm Button Hd Cap Screw	1
96		M8_1n	M8 Lock Nut	2
97	78517	10lw	#10 Lockwasher	2
98	63531	10-24_.38bh	#10-24 x 3/8" Button Hd Cap Screw	2



79241

ITEM NO.	PART NO.	DESCRIPTION	MATERIAL SPECIFICATION	QTY.
DO NOT SCALE DRAWING				
UNLESS OTHERWISE SPECIFIED DIMENSIONS ARE IN INCHES. TOLERANCES ARE FRACTIONAL DECIMALS ANGLES				
SURFACE FINISH: ✓ ALL OVER				
THE INFORMATION CONTAINED WITHIN THIS DRAWING IS THE SOLE PROPERTY OF ETICO ENGINEERED PRODUCTS AND SHALL NOT BE REPRODUCED OR TRANSMITTED IN ANY FORM OR BY ANY MEANS WITHOUT THE WRITTEN PERMISSION OF ETICO ENGINEERED PRODUCTS.				
MATERIAL: See Parts List		ETICO ENGINEERED PRODUCTS 25 BELLEW STREET WARWICK, RI 02886 (401) 467-2400		
HEAT TREAT:		PD260N (.090 - 120 Dia. Insulation)		
FINISH:		79241		
SCALE: 1:8		DATE: 22Jan09		
REVISION:		APPLICATION:		