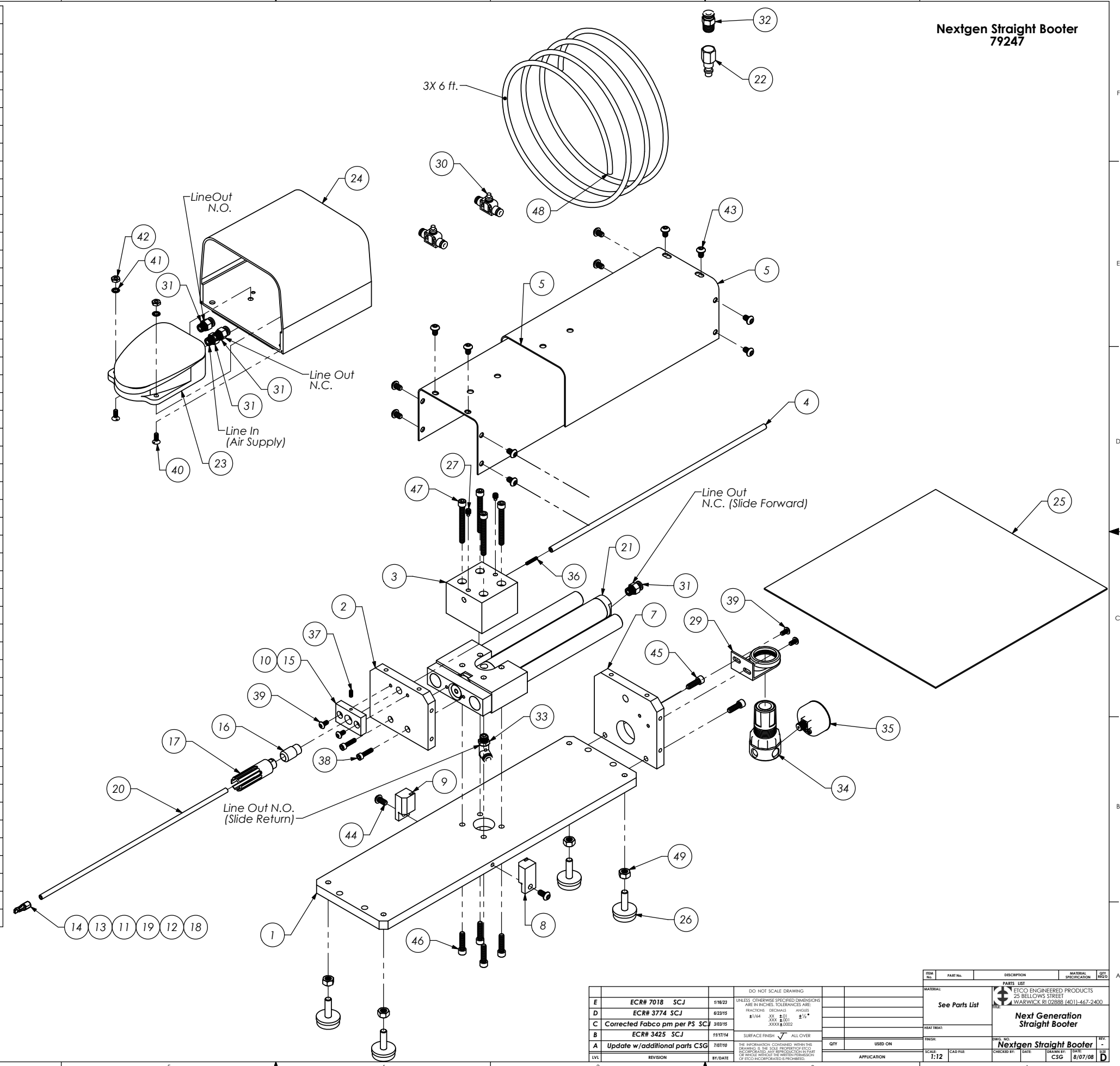


**Nextgen Straight Booter
79247**

Parts List				
Item No.	Part Code	Part No.	Description	QTY.
1		62324	Base Plate	1
2		62325	Ram	1
3		62326	Boot Rod Support	1
4		62327	Boot Rod	1
5		62328	Rear Guard (Fixed)	1
6	62329	62329	Sliding Guard	1
7		62330	Rear Guard Bracket	1
8		62331	Rear Guard Braket (R)	1
9	62332	62332	Rear Guard Bracket (L)	1
10		62333	Boot Ram Block	1
11		62416	Terminal Hook (SP3000)	1
12		62932	Terminal Hook (Delphi15336994)	1
13		62933	Terminal Hook (SP991/233)	1
14	-	62984	Booter Hook (DT15)	1
15		62985	Boot Ram Block	1
16		62986	Boot Insert	1
17	64263	64263	Boot Support (Tecsens 10 CD 03)	1
18	64264	64264	Terminal Hook (Tecsens 10 CD 25)	1
19	AP 70317	68315-Booter Hook	Terminal Hook (Std.)	1
20	(AP 71500)	68750	Boot Rod	1
21	62382	Fabco Air S750-6.0-MH2T5-S2000-UB	Slide	1
22	68328	Grainger Speedaire 2X170	Female Plug	1
23	62380	Linemaster 4C-30F2-S	Foot Pedal Valve	1
24	73780	Linemaster 522-B14	Foot Pedal Guard	1
25	62987	McMaster Carr #8635K264	Sound Deadening Mat'l.	1
26	63938	McMaster Carr #2515T18	Leveling Foot	4
27	100083	McMaster Carr #91381A351	1/4-28 x 1/4 Brass Tip Set Screw	2
28	62323	Norgren 2962-89	Panel Nut Norgren 2962-89	1
29	100120	Norgren R07-200 Bracket	Norgren 18-025-003 Mounting Bracket	1
30	62379	Pisco JSU250	Ø1/4" In-line Flow Control	2
31	73222	Pisco PC250-N1U	1/4" x 1/8" NPT Straight	4
32	64115	Pisco PC250-N2U	Ø1/4" x 1/4-NPT Straight Connector, Black	1
33	62378	Pisco PLL250-N1U	Ø1/4" x 1/8-NPT Elbow Fitting, White	1
34	62083	Watts R364-02C	Regulator	1
35	63190	Watts 274Z160S	Air Pressure Gauge	1
36	63134	6-32_.75ss	#6-32 x 3/4" Socket Hd Set Screw	1
37	100118	8-32_.38ssf	#8-32 x 3/8" Socket Hd Set Screw	1
38		10-24_.75sh	#10-24 x 3/4" Socket Hd Cap Screw	2
39	78993	10-32_.38bh	#10-32 x 3/8" Button Hd Cap Screw	4
40		10-32_.50fhs	10-32 x 1/2" Slotted Flat Hd Screw	2
41	-	10isw	10 Internal Star Washer	2
42	63167	10-32 hn	#10-32 Hex Nut	2
43	63942	1.4-20_.38bh	1/4-20 x 3/8" Button Hd Cap Screw	12
44	63632	1.4-20_.50bh	1/4-20 x 1/2" Button Hd Cap Screw	2
45	70030	1.4-20_.75sh	1/4-20 x 3/4" Socket Hd Cap Screw	2
46	63168	1.4-20_1.00sh	1/4-20 x 1" Socket Hd Cap Screw	4
47	64109	1.4-20_2.25sh	1/4-20 x 2 1/4" Socket Hd Cap Screw	4
48	62172	1_4 inch Polyurethane Air Line Tubing	1/4" Air Line Tubing	1
49	63945	5.16-18hn	5/16-18 Hex Nut	4



REV.	DESCRIPTION	DATE	BY	CHKD.	APP.
E	ECR# 7018 SCJ	1/16/23			
D	ECR# 3774 SCJ	6/23/15			
C	Corrected Fabco pm per PS SCJ	3/30/15			
B	ECR# 3425 SCJ	11/17/14			
A	Update w/additional parts CSG	7/8/16			

DO NOT SCALE DRAWING	UNLESS OTHERWISE SPECIFIED DIMENSIONS ARE IN INCHES. TOLERANCES ARE:	
FRACTIONS	DECIMALS	ANGLES
±1/64"	±.001"	±1/2°
±.0005"	±.0001"	±.0001°

ITEM NO.	PART NO.	DESCRIPTION	MATERIAL SPECIFICATION	QTY.
PARTS LIST				
ETICO ENGINEERED PRODUCTS 25 BELLOWS STREET WARWICK, RI 02888 (401) 467-2400				
See Parts List				
Next Generation Straight Booter				
Nextgen Straight Booter				
SCALE	CAD FILE	DATE	REV.	DATE
1:12			CSG	8/07/08