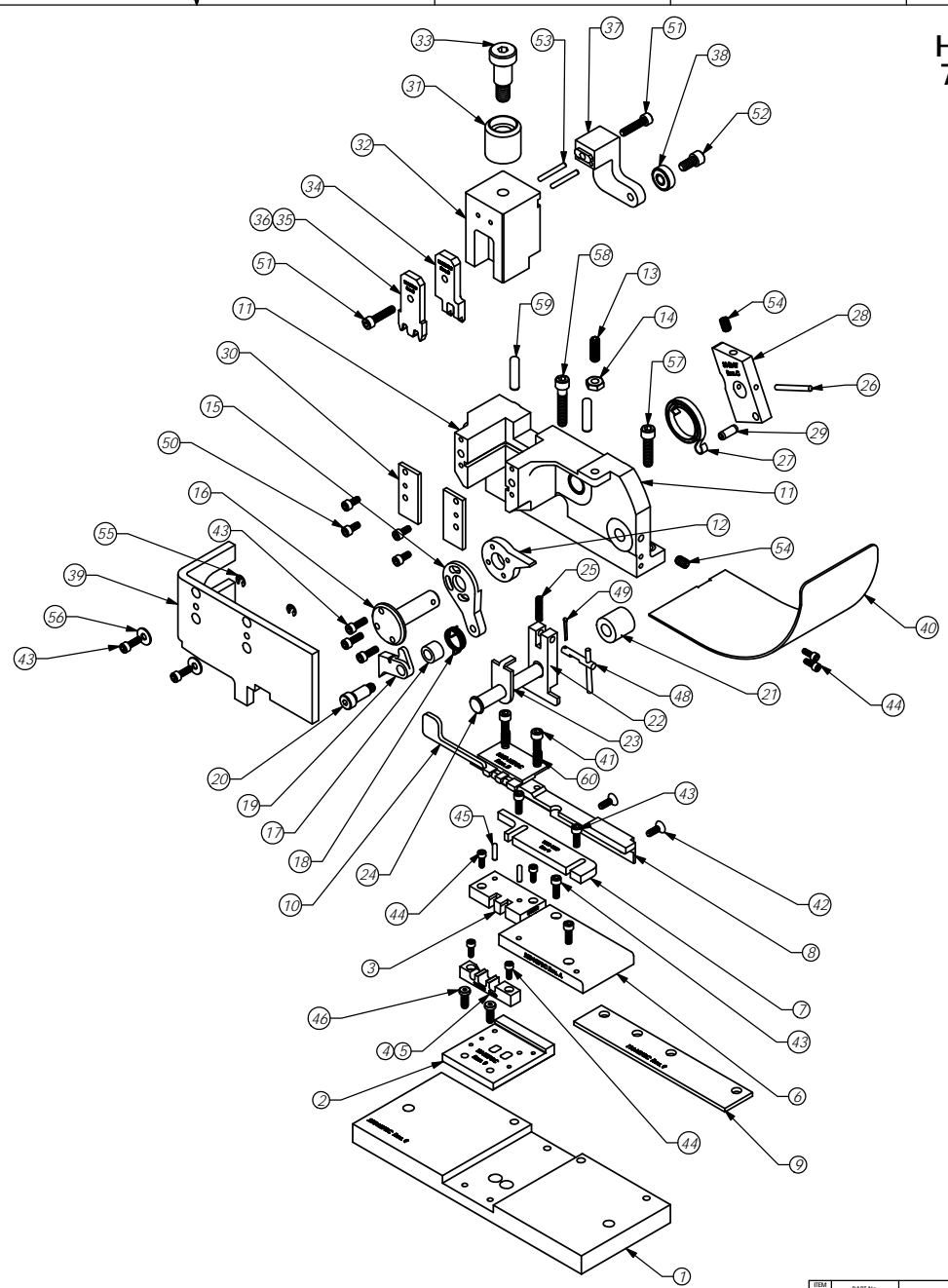


# HSPBC 79258

## Parts List

Item No.	Part Code	Part No.	Description	QTY.
1	62425	205-HSPBC	Base Plate	1
2	62422	TH-HSPBC	Tool Holder	1
3	<b>60629</b>	<b>8-HSPBC</b>	<b>Die</b>	<b>1</b>
4	60658	9-HSPBC-2	Anvil	1
5	60549	9-HSPBC	Anvil	1
6	62617	250-HSPBC	Die Plate	1
7	69816	1000-156F	Front Guide	1
8	62424	500-HSPBC	Rear Guide	1
9	62623	116-HSPBC	Casting Spacer	1
10	60830	1600-HSPBC	Stripper/Wire Stop	1
11	62616	101R-HSPBC	Top Casting	1
12	62619	306-HSPBC	Feed Stop Arm	1
13	63513	1.4-28_75ss	1/4-28 x 3/4" Socket Set Screw	1
14	63512	1.4-28 Jn	1/4-28 Jam Nut	1
15	76742	305-5	Feed Finger Arm	1
16	74400	308	Feed Shaft	1
17	77269	304-.375	Feed Finger Spacer	1
18	62620	307R-6	Feed Finger Tension Spring	1
19	62618	303-HSPBC	Feed Finger	1
20	76858	301-3	Shoulder Screw	1
21	61345	408-.800	Brake spacer	1
22	62621	403-HSPBC	Brake Body	1
23	74496	402	Spring Retainer	1
24	74495	401	Brake Shaft	1
25	74676	407	Brake Spring	1
26	74404	312	Cam Taper Pin	1
27	74402	310	Cam Return Spring	1
28	75115	314R-17	Cam Body	1
29	74403	311	Spring Pin	1
30	67281	169-3	Gib	2
31	77634	CS-110	Plunger Shank	1
32	60700	11-HSPBC	Plunger	1
33	62622	1.2_75shss	1/2" x 3/4" Socket Hd Shoulder Screw	1
34	60628	12-HSPBC	Cut-off Punch	1
35	60550	13-HSPBC	Wire Rolling Tool	1
36	60660	13-HSPBC-2	Wire Rolling Tool	1
37	75716	1125R	Cam Roller Bracket	1
38	65719	1142	Cam Roller Bearing	1
39	62421	176R-HSPBC	Guard	1
40	76191	1805	Stock Chute	1
41	63056	10-32_50sh	#10-32 x 1/2" Socket Hd Cap Screw	2
42	63052	8-32_50fh	#8-32 x 1/2" Flat Hd Cap Screw	2
43	63164	8-32_50sh	#8-32 x 1/2" Socket Hd Cap Screw	9
44	63209	6-32_38sh	#6-32 x 3/8" Socket Hd Cap Screw	6
45	63507	1.8_50dp	Ø 1/8" x 1/2" Dowel	2
46		10-32_50h	#10-32 x 1/2" Low Hd Cap Screw	2
47	63506	McMaster-Carr #1095K11	1/8 NPT Grease Fitting	1
48	74673	404_405as	Brake Cam Assy	1
49	78981	406-1	Cotter Pin	1
50	63161	8-32_38sh	#8-32 x 3/8" Socket Hd Cap Screw	4
51		10-32_88sh	#10-32 x 7/8" Socket Hd Cap Screw	2
52	78328	1.4-20_50sh	1/4-20 x 1/2" Socket Hd Cap Screw	1
53	62849	1.8_1.00dp	1/8" x 1" Dowel	2
54		1.4-20_38ssf	1/4-20 x 3/8" Socket Hd Set Screw	2
55	72069	McMaster Carr #98407A118	#8 E-Style Retaining Ring	2
56	63210	8fw	#8 Flatwasher	2
57	63168	1.4-20_1.00sh	1/4-20 x 1" Socket Hd Cap Screw	1
58		1.4-20_1.31sh	1/4-20 x 1-5/16" Socket Hd Cap Screw	1
59	63510	1.4_1.00dp	1/4 x 1" Dowel Pin	2
60	73952	231	Stripper Spring	2



Note:  
**Bold faced** text denotes perishable tooling.

ITEM NO.	PART NO.	DESCRIPTION	MATERIAL SPECIFICATION	QTY REQD																																								
<table border="1" style="width:100%; border-collapse: collapse;"> <tr> <td colspan="2">DO NOT SCALE DRAWING</td> <td colspan="3">UNLESS OTHERWISE SPECIFIED DIMENSIONS ARE IN INCHES. TOLERANCES ARE:</td> </tr> <tr> <td>FRACTIONS</td> <td>DECIMALS</td> <td>ANGLES</td> <td colspan="2"></td> </tr> <tr> <td>±1/64</td> <td>±.01</td> <td>±1/2°</td> <td colspan="2"></td> </tr> <tr> <td>XXX ±.001</td> <td>±.005</td> <td>±1/4°</td> <td colspan="2"></td> </tr> <tr> <td>XXXX ±.002</td> <td>±.010</td> <td></td> <td colspan="2"></td> </tr> </table>					DO NOT SCALE DRAWING		UNLESS OTHERWISE SPECIFIED DIMENSIONS ARE IN INCHES. TOLERANCES ARE:			FRACTIONS	DECIMALS	ANGLES			±1/64	±.01	±1/2°			XXX ±.001	±.005	±1/4°			XXXX ±.002	±.010																		
DO NOT SCALE DRAWING		UNLESS OTHERWISE SPECIFIED DIMENSIONS ARE IN INCHES. TOLERANCES ARE:																																										
FRACTIONS	DECIMALS	ANGLES																																										
±1/64	±.01	±1/2°																																										
XXX ±.001	±.005	±1/4°																																										
XXXX ±.002	±.010																																											
<table border="1" style="width:100%; border-collapse: collapse;"> <tr> <td colspan="2">MATERIAL</td> <td colspan="3">PARTS LIST</td> </tr> <tr> <td colspan="2">See Parts List</td> <td colspan="3">HSPBC ENGINEERED PRODUCTS 25 BELLOWS STREET WARWICK RI 02888 (401)-467-2400</td> </tr> <tr> <td colspan="2">HEAT TREAT</td> <td colspan="3">HSPBC</td> </tr> <tr> <td colspan="2">FINISH</td> <td colspan="3">SURFACE FINISH: <input checked="" type="checkbox"/> ALL OVER</td> </tr> <tr> <td colspan="2">QTY</td> <td colspan="3">USED ON</td> </tr> <tr> <td colspan="2">SCALE</td> <td colspan="3">1:3</td> </tr> <tr> <td colspan="2">DATE</td> <td colspan="3">09Feb09</td> </tr> <tr> <td colspan="2">BY</td> <td colspan="3">SCJ</td> </tr> </table>					MATERIAL		PARTS LIST			See Parts List		HSPBC ENGINEERED PRODUCTS 25 BELLOWS STREET WARWICK RI 02888 (401)-467-2400			HEAT TREAT		HSPBC			FINISH		SURFACE FINISH: <input checked="" type="checkbox"/> ALL OVER			QTY		USED ON			SCALE		1:3			DATE		09Feb09			BY		SCJ		
MATERIAL		PARTS LIST																																										
See Parts List		HSPBC ENGINEERED PRODUCTS 25 BELLOWS STREET WARWICK RI 02888 (401)-467-2400																																										
HEAT TREAT		HSPBC																																										
FINISH		SURFACE FINISH: <input checked="" type="checkbox"/> ALL OVER																																										
QTY		USED ON																																										
SCALE		1:3																																										
DATE		09Feb09																																										
BY		SCJ																																										
<table border="1" style="width:100%; border-collapse: collapse;"> <tr> <th>LVL</th> <th>REVISION</th> <th>BY/DATE</th> <th>APPLICATION</th> <th>QTY</th> <th>USED ON</th> </tr> <tr> <td></td> <td></td> <td></td> <td></td> <td></td> <td></td> </tr> </table>					LVL	REVISION	BY/DATE	APPLICATION	QTY	USED ON																																		
LVL	REVISION	BY/DATE	APPLICATION	QTY	USED ON																																							