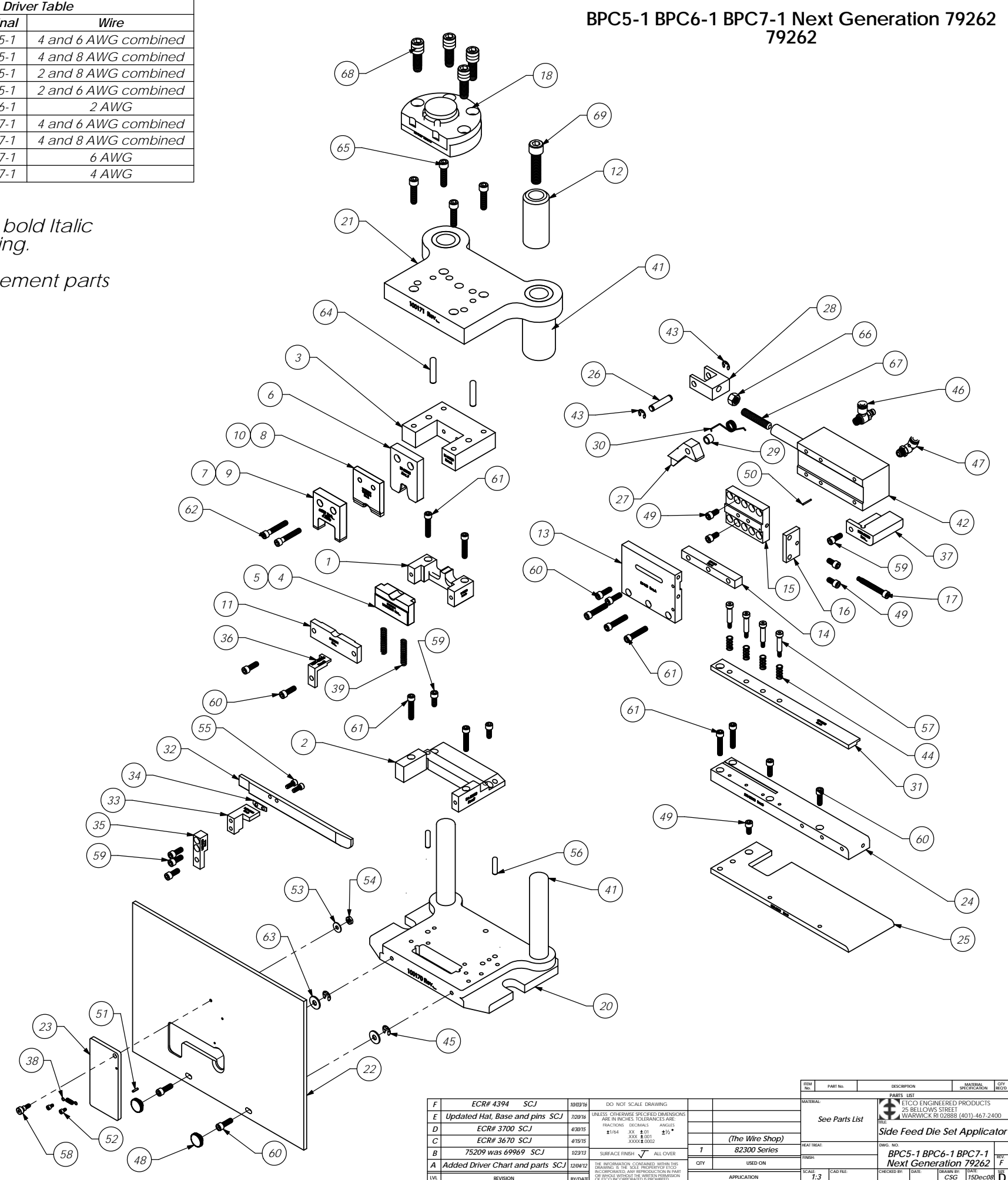


Parts List				
Item No.	Part Code	Part No.	Description	QTY.
1	60322	9-82300	Anvil	1
2	60880	9A-82300	Bottom Tool Holder	1
3	60884	11-82300	Top Tool Holder	1
4	61994	12-82300-1	Cut-off Punch	1
5	100065	12-82300-2	Cut-off Punch (ECI)	1
6	60320	13-82300	Wire Rolling Tool	1
7	60888	15-82300-1	Cut-off Punch Driver - 1 AWG	1
8	60889	15-82300-2	Wire Driver	1
9	61997	15-82300-4	Cut-off Punch Driver - 4 AWG	1
10	100066	15-82300-5	Wire Driver (ECI)	1
11	61995	21-82300-1	Cut-off Punch Retainer	1
12	100162	26-R553E	Shank	1
13	75197	26-168	Air Cylinder Support	1
14	60877	26A-168	Air Cylinder Support Spacer	1
15	62007	26-169-1	Air Cylinder Adjustment Plate	1
16	75199	26-170	Feed Adjust Plate	1
17	69947	26-171	Feed Adjusting Screw	1
18	62346	26-648	Adapter	1
19	75914	26-200	Adapter	1
20	100170	30-BPC5	Die Set Base	1
21	100171	31-BPC5	Die Set Hat	1
22	60896	176F-1-82300	Guard	1
23	60895	176F-1-A-82300	Guard Cover	1
24	60881	250-82300	Feed Plate	1
25	60879	250A-82300	Feed Plate Support	1
26	75210	301-10	Feed Pivot Pin	1
27	60885	303-82300	Feed Finger	1
28	62009	303A-133-1	Clevis	1
29	75209	304-.310-1	Feed Finger Spacer	1
30	75211	307-80	Feed Finger Spring	1
31	60883	403-82300	Brake/Front Guide	1
32	62587	1600-82300-1	Stripper/Rear Guide	1
33	60183	1625-82300	Stripper/Rear Guide Hor. Mount	1
34	62096	1625-82300-.020	Rear Guide Spacer	1
35	60887	1650-82300	Stripper/Rear Guide Mount	1
36	60886	1651-82300	Carrier Strip Holddown	1
37	100061	1800-82300	Chute	1
38	73511	3022-44	Expansion Spring	1
39	63825	5-055-1.55	Compression Spring	2
40	100167	Dieco BSH-MB8	Dieco Shoulder Bushing or equiv.	2
41	100164	Dieco TN100XP	Dieco Guide Pin or equiv	2
42	62535	Fabco #SQ221 x 3.00 MR-K-C4 (Modified)	Feed Cylinder	1
43	63484	Irving 3100-31	Retaining Ring	2
44	77322	LC-045E-10-M	Spring	4
45	72086	McMaster Carr 98407A120	1/4" E-Style Retaining Ring	2
46	76268	Pisco JSC250-N1AU	Speed Controller	1
47	72352	Pisco PL250-N1U	Ø1/4" x 1/8-NPT Elbow Fitting	1
48	63916	SPI 98-703-B	1/4" Black Knurled Knob	2
49	78328	1.4-20_.50sh	1/4-20 x 1/2" Socket Hd Cap Screw	5
50	63486	1.16_.63rp	1/16" x 5/8" Roll Pin	1
51		3.32_.38rp	Ø3/32" x 3/8" Roll Pin	1
52	63207	6-32_.25sh	#6-32 x 1/4" Socket Hd Cap Screw	2
53	63753	10fw	#10 Flatwasher	1
54		10-24hn	#10-24 Hex Nut	1
55	63056	10-32_.50sh	#10-32 x 1/2" Socket Hd Cap Screw	2
56	63510	1.4_1.00dp	1/4 x 1" Dowel Pin	2
57	63491	1.4_1.00shss	1/4 x 1" Shoulder Screw	4
58	100090	1.4_.25shss	1/4" x 1/4" Socket Hd Shoulder Screw	1
59	63492	1.4-20_.63sh	1/4-20 x 5/8" Socket Hd Cap Screw	6
60	70030	1.4-20_.75sh	1/4-20 x 3/4" Socket Hd Cap Screw	8
61	71482	1.4-20_1.25sh	1/4-20 x 1 1/4" Socket Hd Cap Screw	9
62	78841	1.4-20_1.50sh	1/4-20 x 1-1/2" Socket Hd Cap Screw	2
63	63488	1.4fw hardened	1/4" Flatwasher (Hardened)	2
64		5.16_1.50dp	5/16" x 1 1/2" Dowel Pin	2
65	70169	5.16-18_1.25 sh	5/16-18 x 1 1/4" Socket Hd Cap Screw	4
66	63485	3.8-24hn	3/8-24 Hex Nut	1
67	63490	3.8-24_2.00ssf	3/8-24 x 2" Soc Set Screw	1
68		7.16-14_1.25sh	7/16-14 x 1 1/4" Socket Hd Cap Screw	8
69		1.2-20_2.00sh	1/2-20 x 2.00 Socket Hd Cap Screw	1

Cut-off Punch Driver Table			
Part Code	Part No.	Terminal	Wire
60888	15-82300-1	BPC5-1	4 and 6 AWG combined
60888	15-82300-1	BPC5-1	4 and 8 AWG combined
60888	15-82300-1	BPC5-1	2 and 8 AWG combined
61997	15-82300-4	BPC5-1	2 and 6 AWG combined
61997	15-82300-4	BPC6-1	2 AWG
60888	15-82300-1	BPC7-1	4 and 6 AWG combined
60888	15-82300-1	BPC7-1	4 and 8 AWG combined
61401	15-82300-3	BPC7-1	6 AWG
61997	15-82300-4	BPC7-1	4 AWG

Note:  
 1) Items marked in bold *Italic* are high wear tooling.  
 2) Use OEM replacement parts only.



REV	DATE	DESCRIPTION	BY	CHKD	APP'D
F	10/03/16	Updated Hat, Base and pins	SCJ		
E	7/20/16	ECR# 4394	SCJ		
D	4/30/15	ECR# 3700	SCJ		
C	4/15/15	ECR# 3670	SCJ		
B	10/29/13	75209 was 69969	SCJ		
A	12/04/12	Added Driver Chart and parts	SCJ		

REV	DATE	DESCRIPTION	BY	CHKD	APP'D
1		82300 Series			

REV	DATE	DESCRIPTION	BY	CHKD	APP'D
1	15Dec08	BPC5-1 BPC6-1 BPC7-1 Next Generation 79262	SCJ		