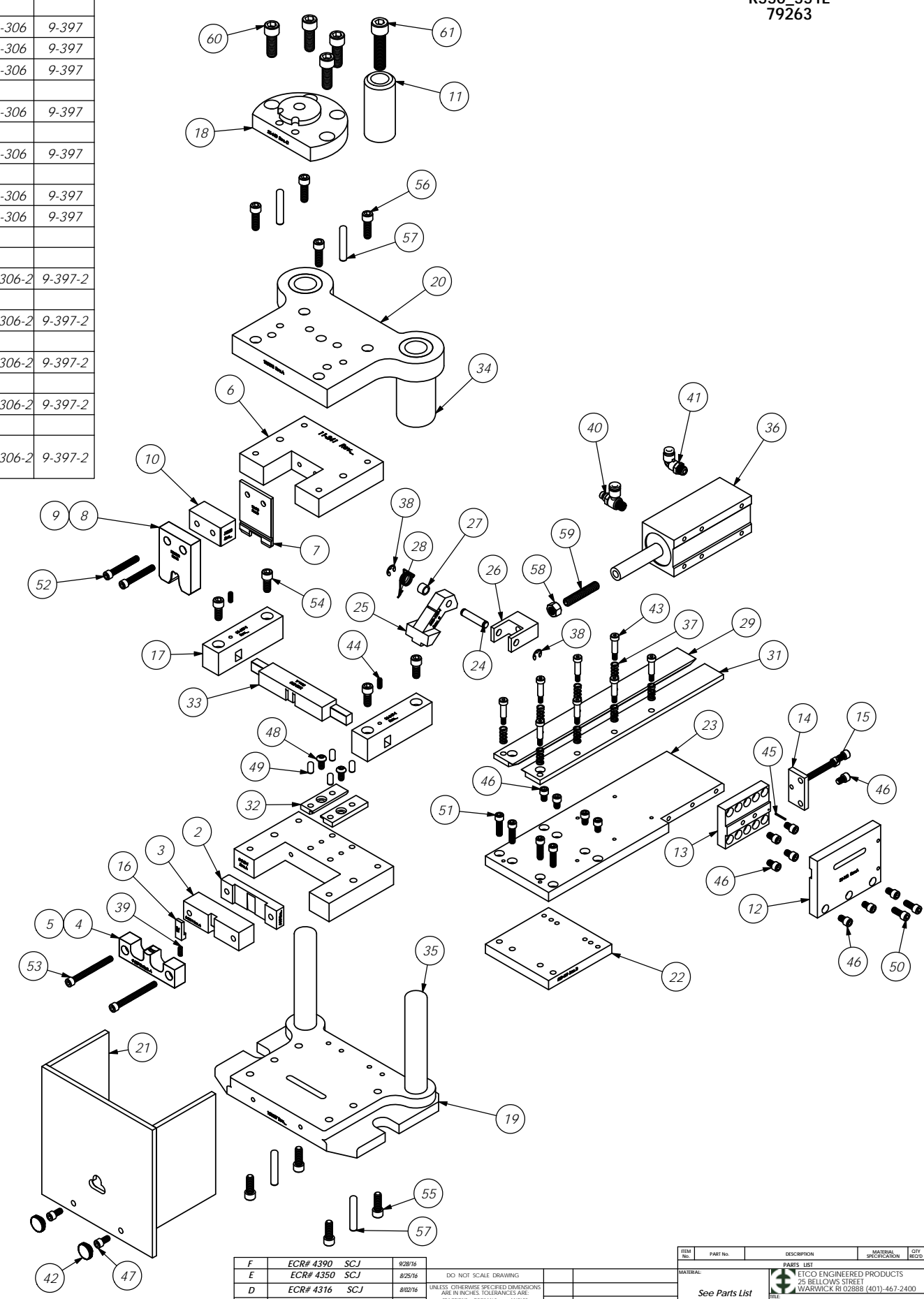


ITEM NO.	Part_Code	PART NUMBER	DESCRIPTION	QTY.	Terminal	AWG	Description	Strand Count Ø Strands	CMA	Pull Test	Crimp Ht	Crimp Width	Roll Tool	Anvil
1	61948	8-348-1	Die Holder	1										
2	75217	8-349	Rear Cut-Off Die	1	R551E-TCU	6	E644	265@Ø .0103	28,090	200+	0.220	0.410	13-306	9-397
3	61967	8-350-1	Front Cut-off Die	1	R551E-TCU	6	E1752	133@Ø .0142	26,812	200+	0.220	0.410	13-306	9-397
4	61961	9-397	Conductor Anvil	1	R551E-TCU	6	E1767	265@Ø .010	26,500	200+	0.220	0.410	13-306	9-397
5	61989	9-397-2	Conductor Anvil (2 AWG)	1										
6	75221	11-241	Punch Holder	1	R551E-TCU	2-8		266@Ø .0113	33,940	200+	0.235	0.413	13-306	9-397
7	69979	12-273	Cut-off Punch	1										
8	69978	13-306	Wire Rolling Tool	1	R551E-TCU	5	E644	329@Ø .0103	34,874	200+	0.235	0.414	13-306	9-397
9	61990	13-306-2	Wire Roll Tool (2 AWG)	1										
10	75223	16-092	Spacer	1	R551E-TCU	4	E644	403@Ø .010	40,300	200+	0.240	0.415	13-306	9-397
11	100162	26-R553E	Shank	1	R551E-TCU	4	E1767	418@Ø .0103	44,308	200+	0.240	0.415	13-306	9-397
12	75197	26-168	Air Cylinder Support	1										
13	62007	26-169-1	Air Cylinder Adjustment Plate	1	R550E-TCU	3	E644	525@Ø .010	52,500	200+	0.245	0.448	13-306-2	9-397-2
14	75199	26-170	Feed Adjust Plate	1	R550E-TCU	8-12		520@Ø .010	52,000	180	0.245	0.448	13-306-2	9-397-2
15	69947	26-171	Feed Adjusting Screw	1										
16	61968	26-633	Lifter	1										
17	62391	26-647-1	Stop Block/Wire stop holder	2	R550E-TCU	2-6	E644	530@Ø .0103	56,180	200+	0.270	0.455	13-306-2	9-397-2
18	62346	26-648	Adapter	1										
19	100207	30-R550E	Die Set Base	1	R550E-TCU	2	E644	650@Ø .010	65,000	200+	0.275	0.456	13-306-2	9-397-2
20	100172	31-R550E	Die Set Hat	1										
21	75887	199-41	Safety Guard	1										
22	75196	250-409	Feed Support	1	R550E-TCU	1-4 + 1-6	E644	430@Ø .010 + 265@Ø .0103	68,390	200+	0.290	0.458	13-306-2	9-397-2
23	75225	250-410	Feed Plate	1										
24	75210	301-10	Feed Pivot Pin	1										
25	62368	303-133-1	Feed Finger	1										
26	62009	303A-133-1	Clevis	1										
27	75209	304-.310-1	Feed Finger Spacer	1										
28	75211	307-80	Feed Finger Spring	1										
29	62367	500-413	Guide Rail	1										
30	61964	500-509	Left Guide Rail	1										
31	75227	1000-283	Guide Rail	1										
32	63791	1000-353	Left Guide Rail	1										
33	62339	1600-390	Wire Stop/Stripper	1										
34	100167	Dieco BSH-MB8	Dieco Shoulder Bushing or equiv.	2										
35	100164	Dieco TN100XP	Dieco Guide Pin or equiv	2										
36	62535	Fabco #SQ221 x 3.00 MR-K-C4 (Modified)	Feed Cylinder	1										
37	77322	LC-045E-10-M	Spring	8										
38	63484	Irving 3100-31	Retaining Ring	2										
39	77380	LC-026B-4-M	Compression Spring	1										
40	76268	Pisco JSC250-N1AU	Speed Controller	1										
41	72352	Pisco PL250-N1U	Ø1/4" x 1/8-NPT Elbow Fitting	1										
42	63916	SPI 98-703-B	1/4" Black Knurled Knob	2										
43		10-24_1.00sh	#10-24 x 1" Socket Head Shoulder Screw	8										
44	63399	10-32_.50ss	#10-32 x 1/2" Socket Hd Set Screw	2										
45	63486	1.16_.63rp	1/16" x 5/8" Roll Pin	1										
46	71481	1.4-20_.38sh	1/4-20 x 3/8" Socket Hd Cap Screw	13										
47	78328	1.4-20_.50sh	1/4-20 x 1/2" Socket Hd Cap Screw	2										
48	63632	1.4-20_.50bh	1/4-20 x 1/2" Button Hd Cap Screw	2										
49	63827	1.4_.50dp	Ø 1/4" x 1/2" Dowel Pin	4										
50	63492	1.4-20_.63sh	1/4-20 x 5/8" Socket Hd Cap Screw	2										
51		1.4-20_.88sh	1/4-20 x 7/8" Socket Hd Cap Screw	4										
52		1.4-20_1.75 sh	1/4-20 x 1 3/4" Socket Hd Cap Screw	2										
53	63496	1.4-20_2.50sh	1/4-20 x 2 1/2" Socket Hd Cap Screw	2										
54		5.16-18_.75sh	5/16-18 x 3/4" Socket Hd Cap Screw	4										
55		5.16-18_.88sh	5/16-18 x 7/8" Socket Hd Cap Screw	4										
56	63495	5.16-18_1.00sh	5/16-18 x 1" Socket Hd Cap Screw	4										
57	63493	5.16_1.75dp	5/16" x 1 3/4" Dowel Pin	4										
58	63485	3.8-24hn	3/8-24 Hex Nut	1										
59	63490	3.8-24_2.00ssf	3/8-24 x 2" Soc Set Screw	1										
60		7.16-14_1.25sh	7/16-14 x 1 1/4" Socket Hd Cap Screw	4										
61		1.2-20_2.00sh	1/2-20 x 2.00 Socket Hd Cap Screw	1										

ITEMS IN BOLD ARE HIGH WEAR TOOLING.



REV	DESCRIPTION	DATE	BY	CHKD	APP
F	ECR# 4390 SCJ	9/28/16			
E	ECR# 4350 SCJ	8/25/16			
D	ECR# 4316 SCJ	8/02/16			
C	63791 was 61968				
	75209 was 69969 SCJ	12/31/13			
B	P/C was 79107 SCJ	10/06/09			
A	Added wire strap SCJ	10/28/09			
LVL	REVISION	BY/DATE			

REV	PART No.	DESCRIPTION	MATERIAL SPECIFICATION	QTY	RECORD
		DO NOT SCALE DRAWING			
		UNLESS OTHERWISE SPECIFIED DIMENSIONS ARE IN INCHES TOLERANCES ARE:			
		FRACTIONS DECIMALS ANGLES			
		1/16" .001 .010 .015"			
		XXX .001 .005 .010 .015"			
		XXXX .001 .005 .010 .015"			
		SURFACE FINISH: ALL OVER			
		HEAT TREAT: R550E/R551E			
		SCALE: 1:3			
		CAD FILE: R550_551E			
		CHECKED BY: SCJ			
		DATE: 8/02/16			
		REV: F			